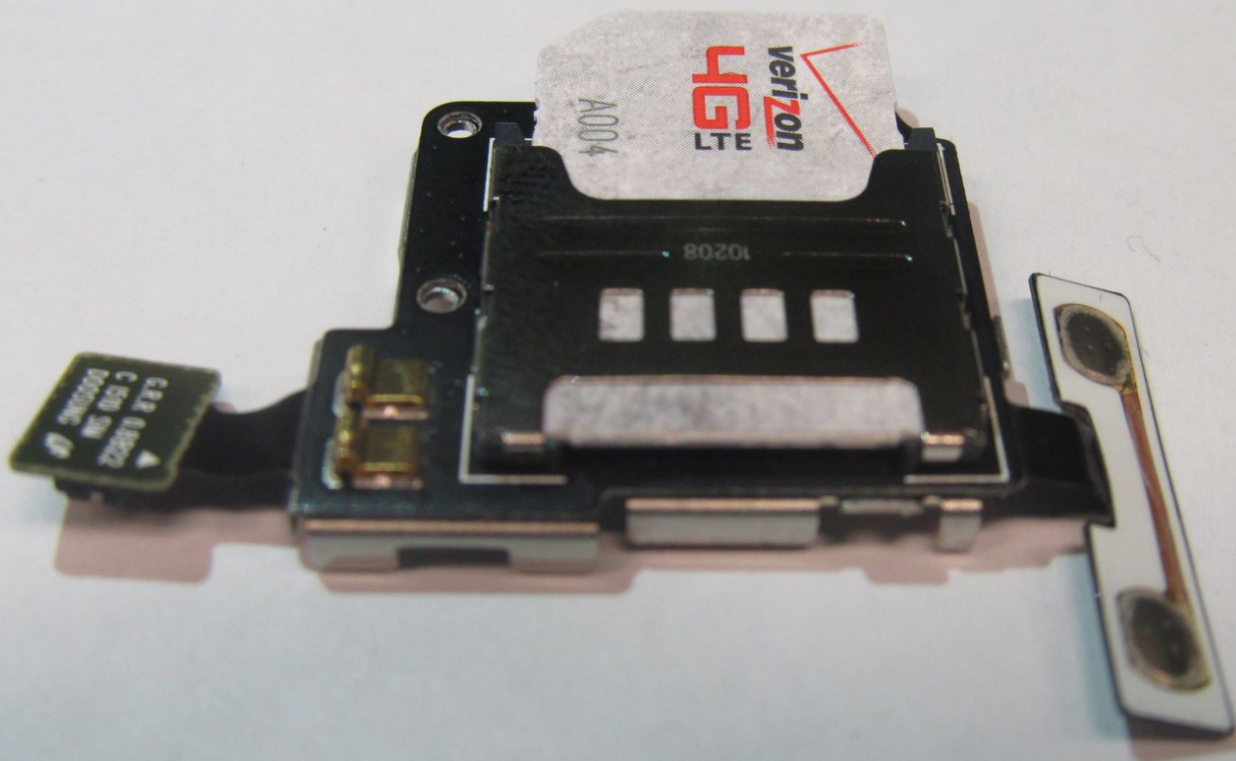




# Samsung Droid Charge SIM Card Port Replacement

Replace the SIM card slot/port on your Samsung Droid Charge.

Written By: Lucas Carter



11/29/2011

## INTRODUCTION

This guide will show you how to remove your current SIM card port/slot and replace it with a new one.



### TOOLS:

- [Plastic Cards](#) (1)
  - [Phillips #00 Screwdriver](#) (1)
-

## Step 1 — Rear Cover



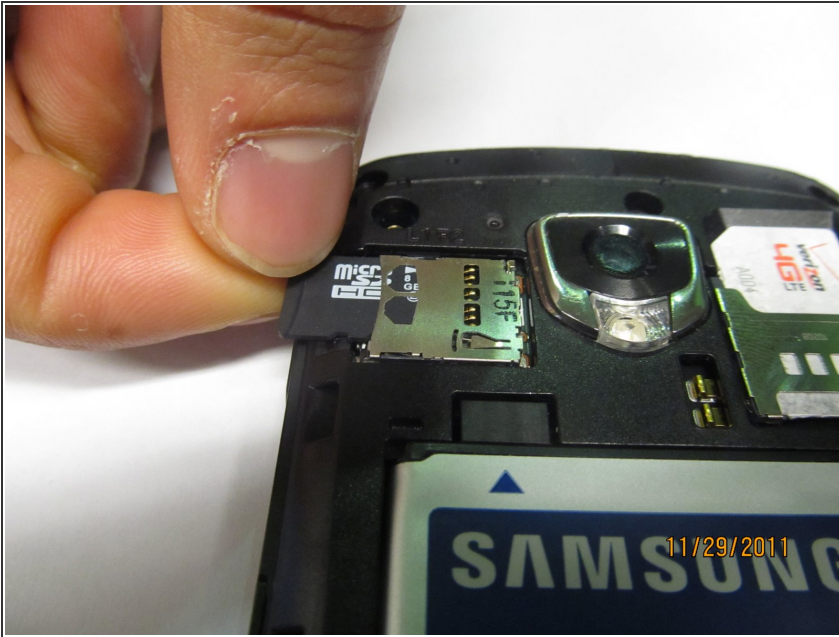
- Open up the back case on the phone from the groove in the bottom of the phone.
- ① You can do this by inserting a fingernail or similarly thin object into the groove and pulling up with mild force.

## Step 2 — Battery



- ① Below the left part of the bottom of the battery area there will be a groove large enough to fit in a finger or screw driver head.
- Use the groove to lever out the battery gently, in order to not damage either the battery or phone. Store the battery in a safe place.

### Step 3 — microSD



- Push the SD card further into its metal slot until you hear a click.
- Release the card, and it should automatically eject itself.
- Remove the SD card.

### Step 4 — SIM card



- Slide the SIM card out of its casing by pushing on it and sliding it upward.



## Step 5 — SIM Card Port



- Carefully remove the back cover.
- Locate the 7 small black screws located around the edge of the phone.
- With a small philips head screwdriver, remove each of the screws, and place them in a secure location.

## Step 6



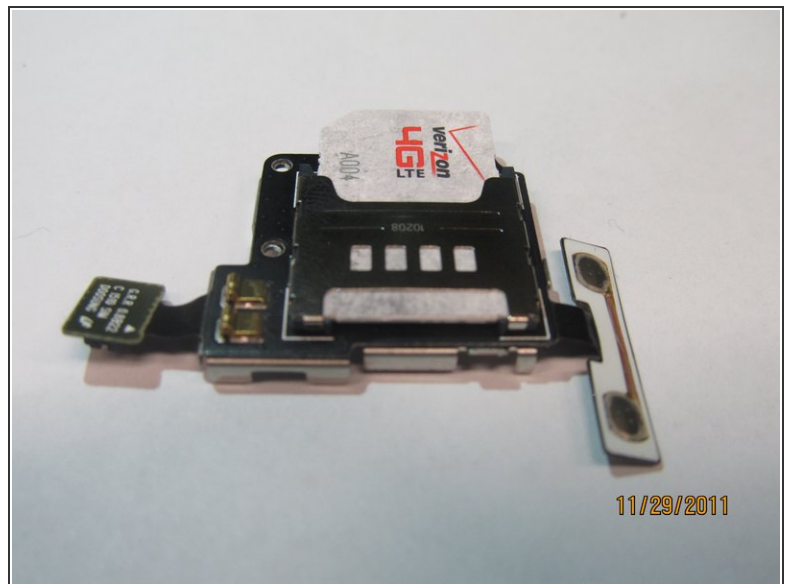
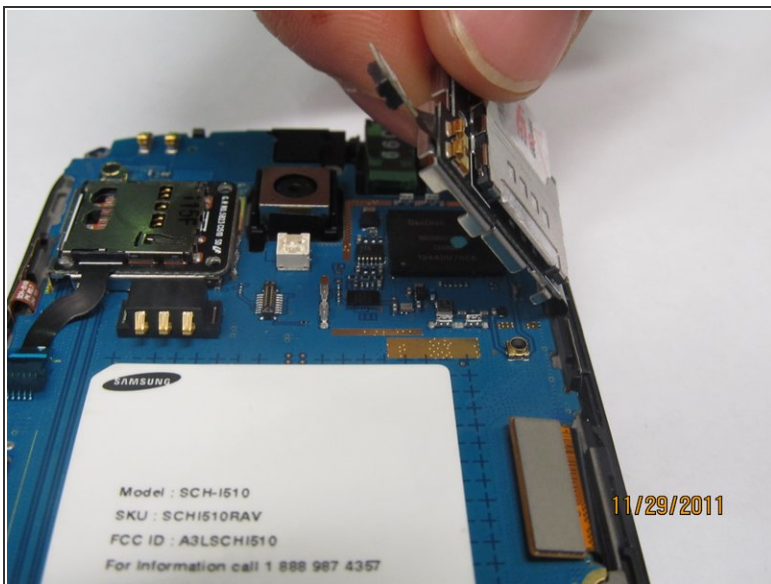
- Removal of the back half of the casing.
- Using a thin plastic flat head screw driver, or similar item. On the side of the phone insert the thin edge into the visible split between the 2 halves of the phone.
- Use a prying motion to lift the casing up. This will separate the phone casing.
- Repeat this motion all around the screen edge until the casing pops off.

## Step 7



- Locate and release the volume button flex cable on the right.
- Locate and release the pop connector on the motherboard located to the left of the SIM card port.

## Step 8



- Your SIM card port is now unattached.
- Remove SIM card port from motherboard.

To reassemble your device, follow these instructions in reverse order.