



# Samsung EX2F Battery Replacement

This guide will demonstrate how to change the rechargeable battery in the Samsung EX2F digital camera.

Written By: Mohammad Haque



## INTRODUCTION

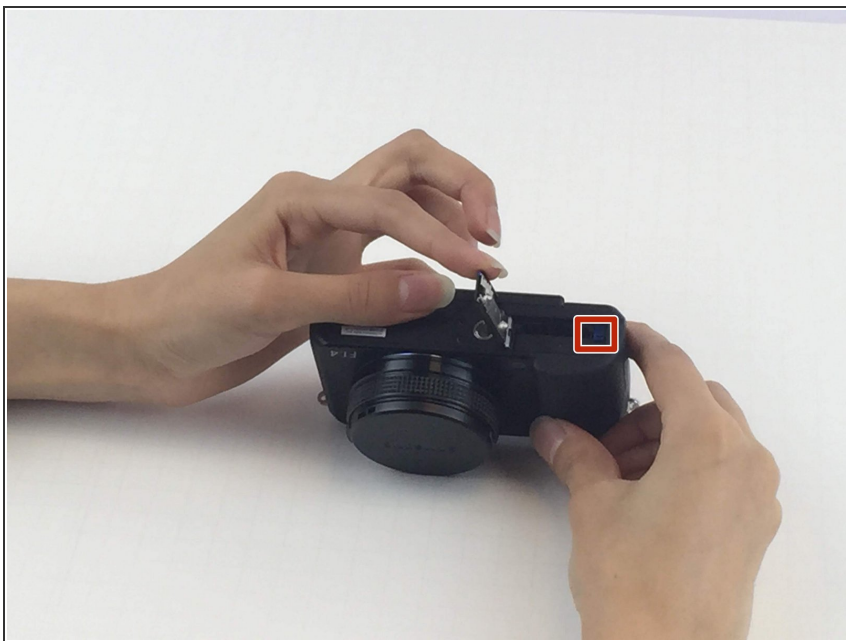
If you are having trouble with battery life in your Samsung EX2F camera, use this guide to change your battery.

## Step 1 — Battery



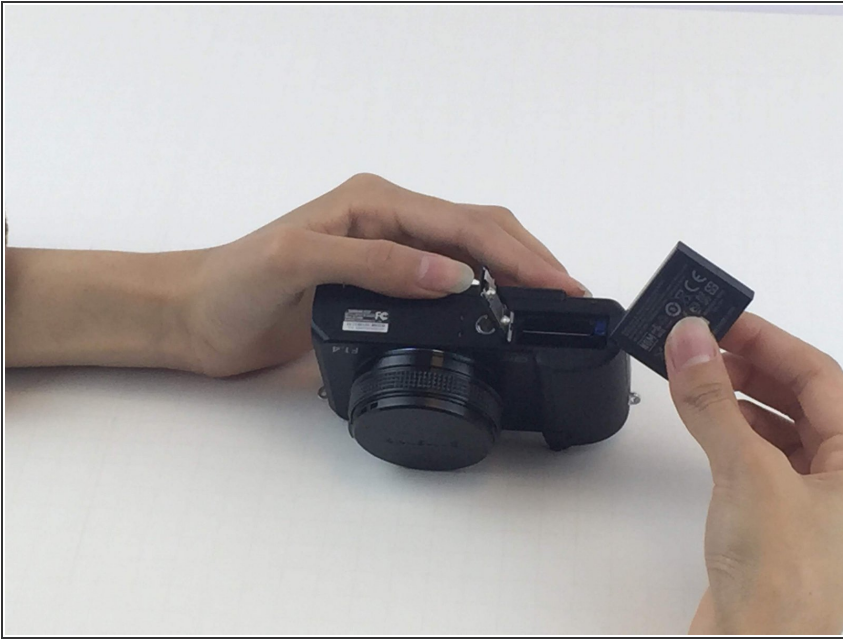
- Slide the battery cover lock towards the center of the camera to unlock the battery compartment.

## Step 2



- Open the battery compartment door.
- Push up on the blue battery lock tab to release the battery.

## Step 3



- Remove the battery from the compartment.

To reassemble your device, follow these instructions in reverse order.