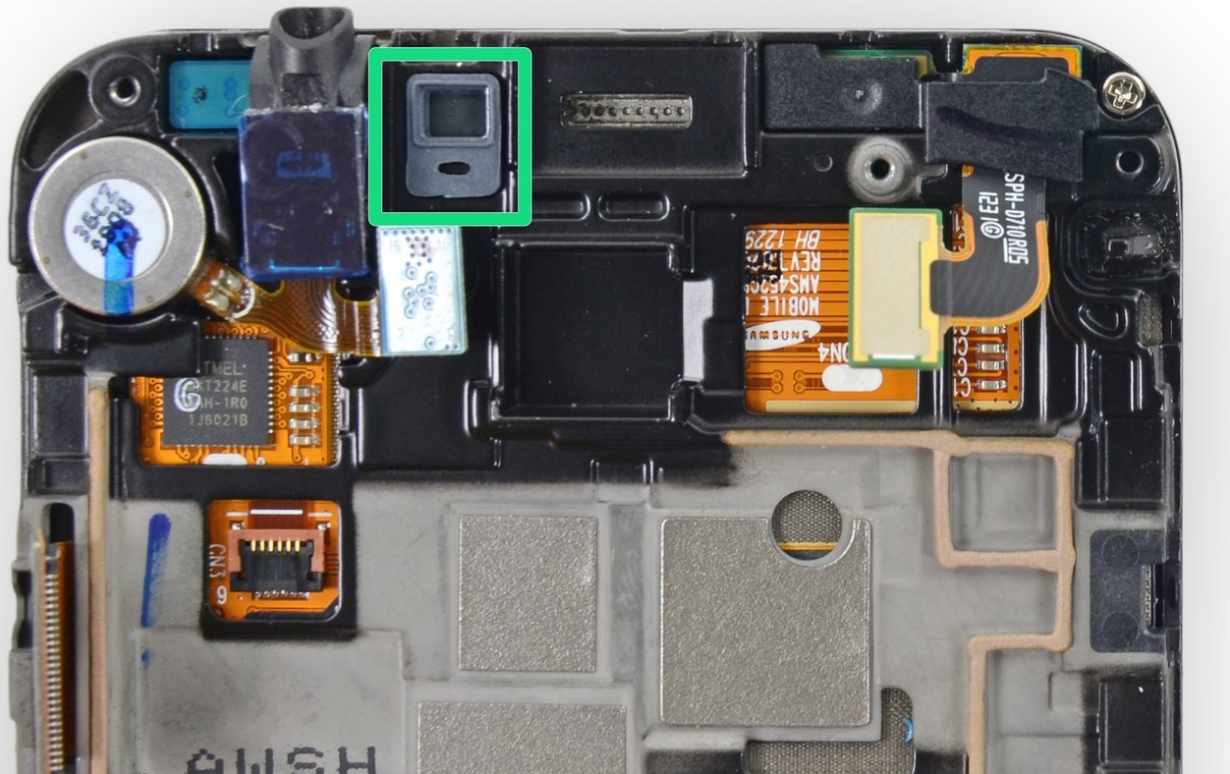




Samsung Epic 4G Touch Microphone Cover Replacement

Prerequisite to ensure the microphone cover is attached.

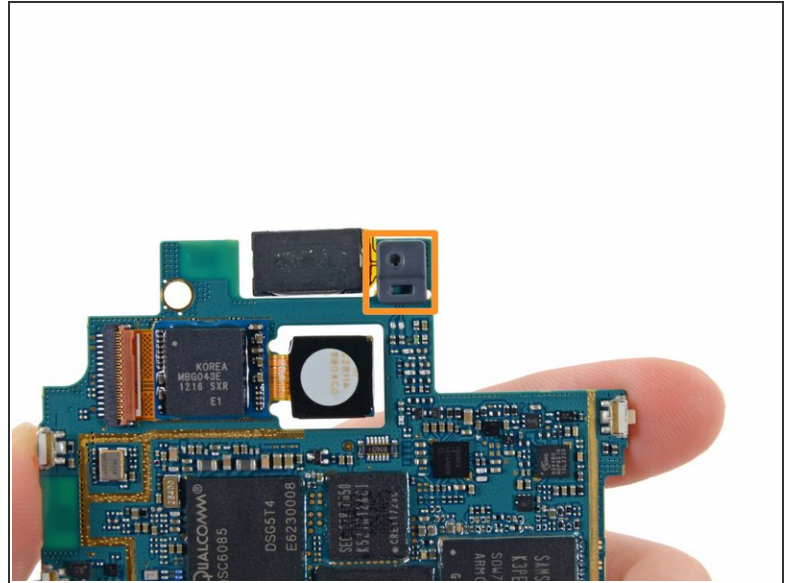
Written By: Sam Goldheart






INTRODUCTION

Prerequisite to ensure the microphone cover stays in the display assembly.

Step 1 — Microphone Cover



-  The microphone cover fits in a notch and over a small peg in the display assembly, ensure it is well seated before sealing your device.
-  Make sure the microphone cover stays in its slot on the display assembly.
-  When you removed the motherboard, the microphone cover may have remained stuck on the microphone. Put it back in its notch in the display assembly to avoid losing it.

To reassemble your device, follow these instructions in reverse order.