



Samsung Epix LCD Display Replacement

Written By: Mark Wyse



INTRODUCTION

This guide shows you how to access the LCD display inside your phone.



TOOLS:

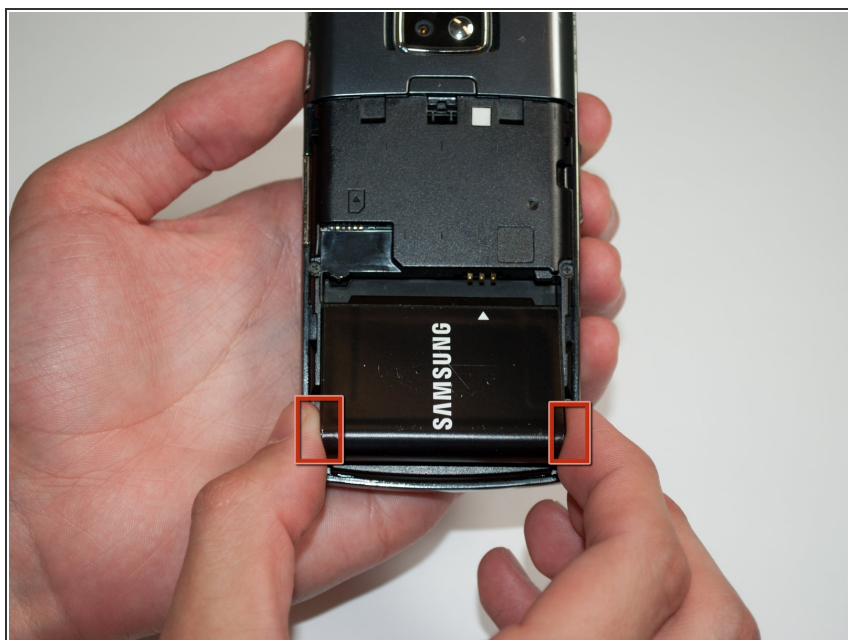
- [2.5 mm Flathead Screwdriver](#) (1)
 - [Phillips #00 Screwdriver](#) (1)
 - [iFixit Opening Tools](#) (1)
-

Step 1 — Battery



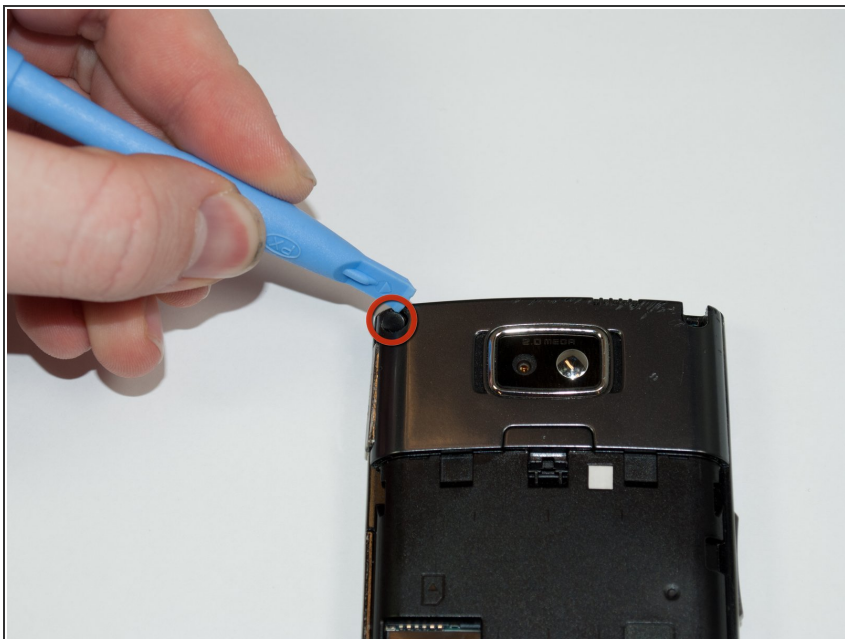
- Press button on back of phone below camera.
- While button is depressed, remove the back panel of the phone by sliding off (not shown in picture).

Step 2



- Grasp the battery near the bottom with two fingers.
- Lift battery up and out gently.

Step 3 — LCD Display



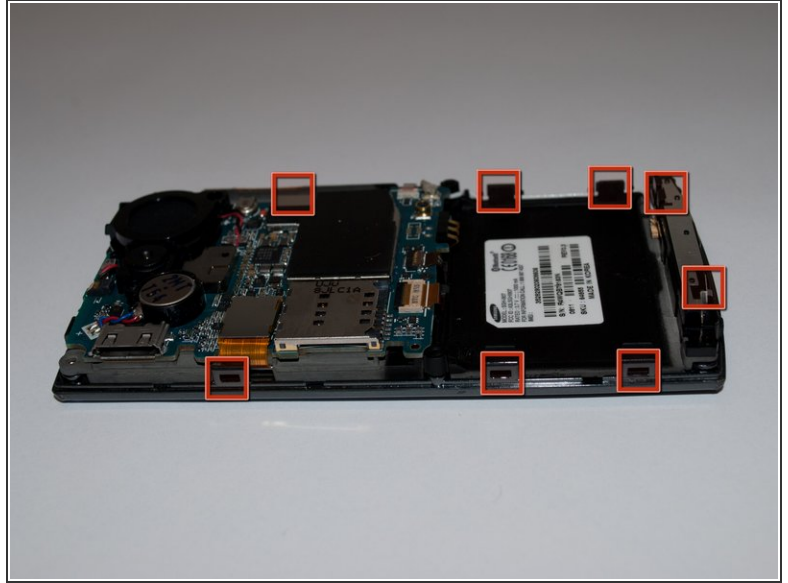
- Remove the rubber screw cover in the top left corner by prying it up with an iPod opener tool.

Step 4



- Use a Phillips #00 screwdriver to remove the six screws on the back of the phone. Three are evenly spaced on each side.
- The upper right screw is 4.5 mm and the others are 6.5 mm.

Step 5



- Slide the iPod opening tool into the seam on the side of the phone and turn it slightly to unhook the eight clips.
- ⓘ There are three clips on each side and two at the bottom of the phone.

Step 6



- Once all eight of the clips have been unhooked, lift the back panel off of the phone.
- ⚠ Be careful not to remove the front panel. It is still connected to the phone chassis by a ribbon cable in the bottom right corner of the motherboard.

Step 7



- Using an iPod opening tool, undo the ribbon cable clip half way up the right side.
- Carefully remove ribbon cable.

Step 8



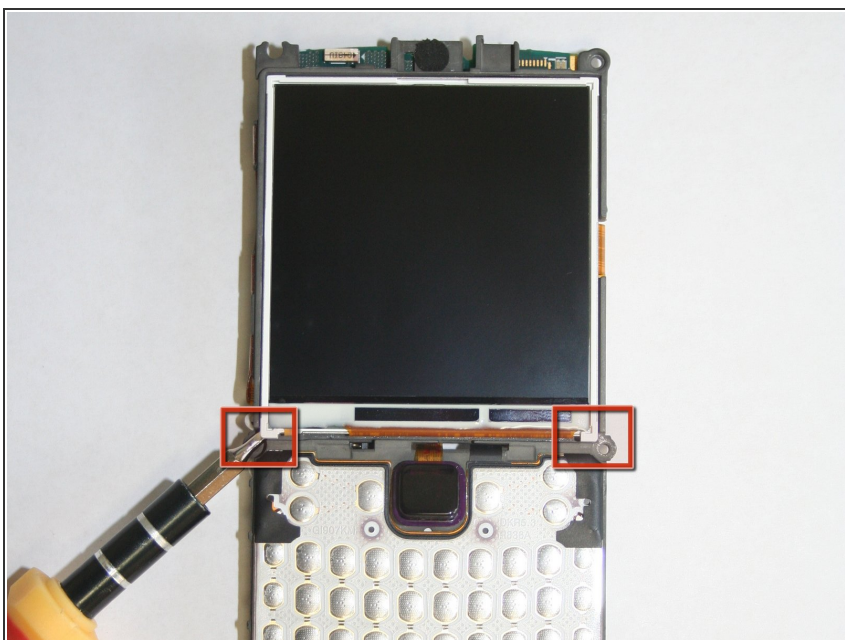
- Remove the front faceplate by lifting it off of the phone chassis.

Step 9



- Using the iPod opening tool, unlatch the LCD ribbon cable.

Step 10

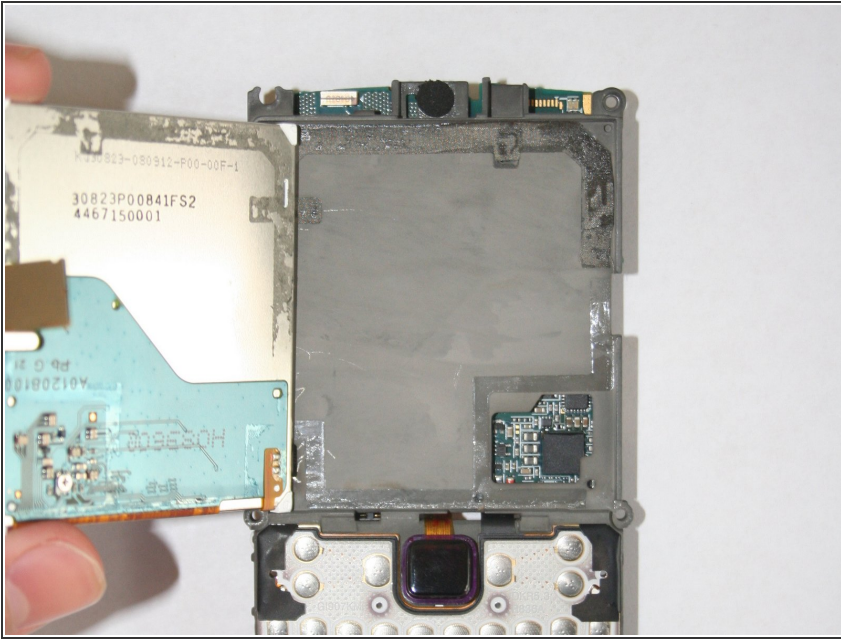


- Using a 1 mm flat head screwdriver, carefully pry under the lower left and right corners of the LCD screen.

i The LCD is held in place to the chassis with adhesive strips.

! Do not pry excessively hard or you may damage the circuitry on the back of the LCD.

Step 11



- Lift the LCD display out from phone chassis.

To reassemble your device, follow these instructions in reverse order.