



Samsung Eternity Camera Replacement

This repair guide will give step-by-step instructions on how to remove the camera so a new one can replace it.

Written By: Michelle Haddock



INTRODUCTION

You will need to find a clean area to work in and have the necessary tools. Follow this guide to gain access to your cellphone's camera module.



TOOLS:

- [Phillips #00 Screwdriver](#) (1)
 - [Spudger](#) (1)
 - [Tweezers](#) (1)
-

Step 1 — Back Case



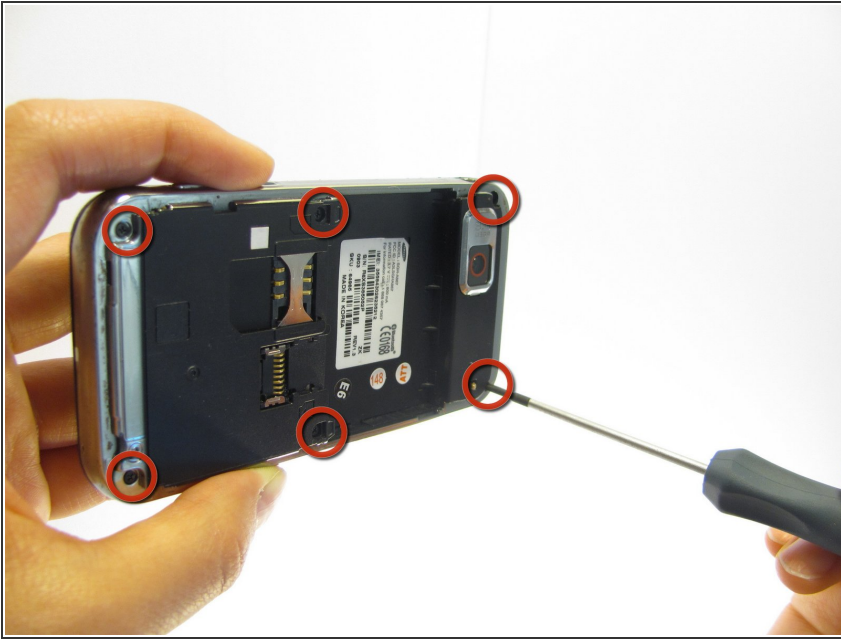
- Remove the back battery cover.

Step 2



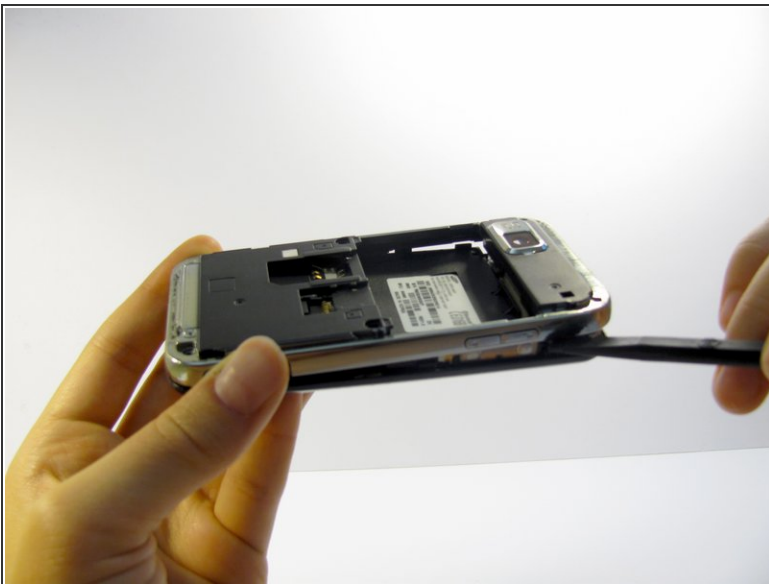
- Remove the phone's battery.

Step 3



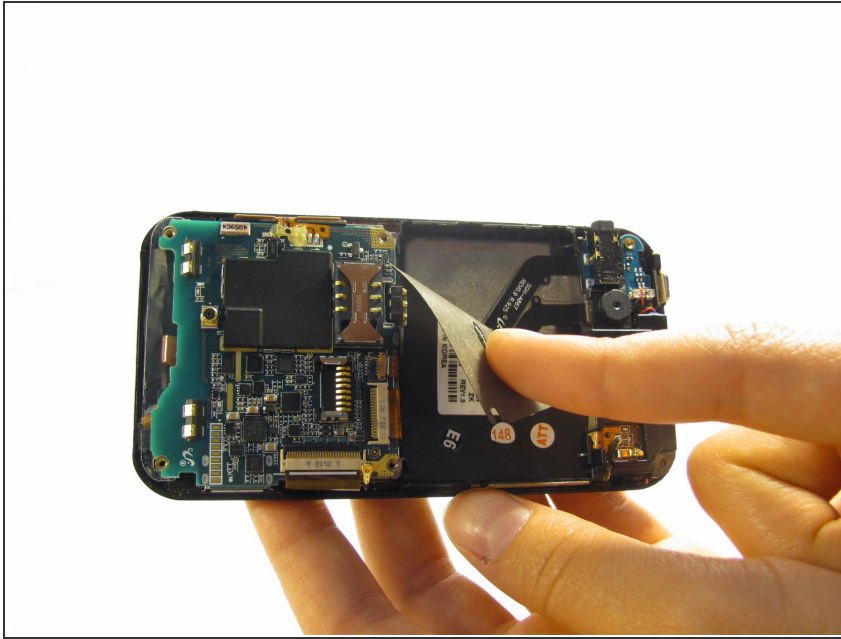
- Remove six (4.28 x 1.25)mm screws.

Step 4



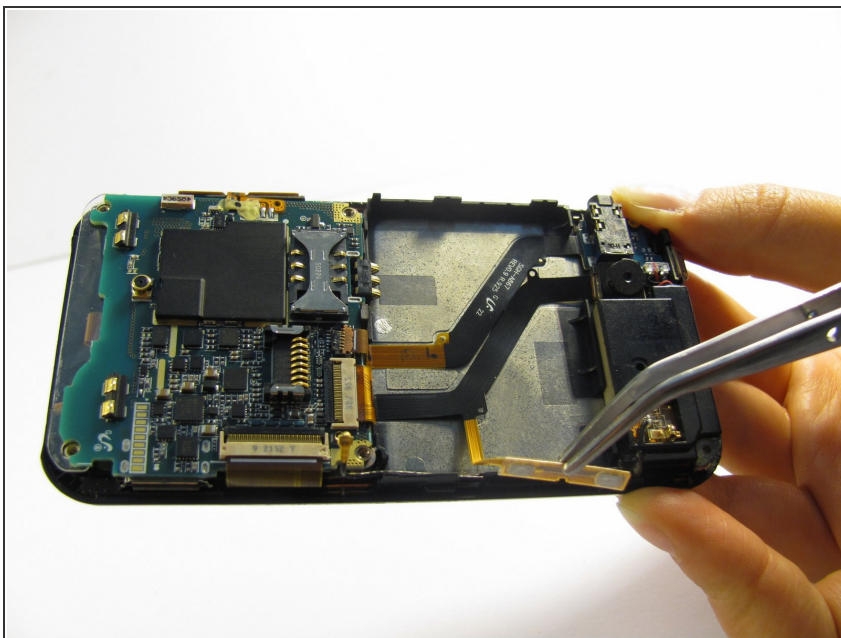
- Use the spudger to gently pry the silver plastic back plate from the body of the phone.

Step 5 — Camera



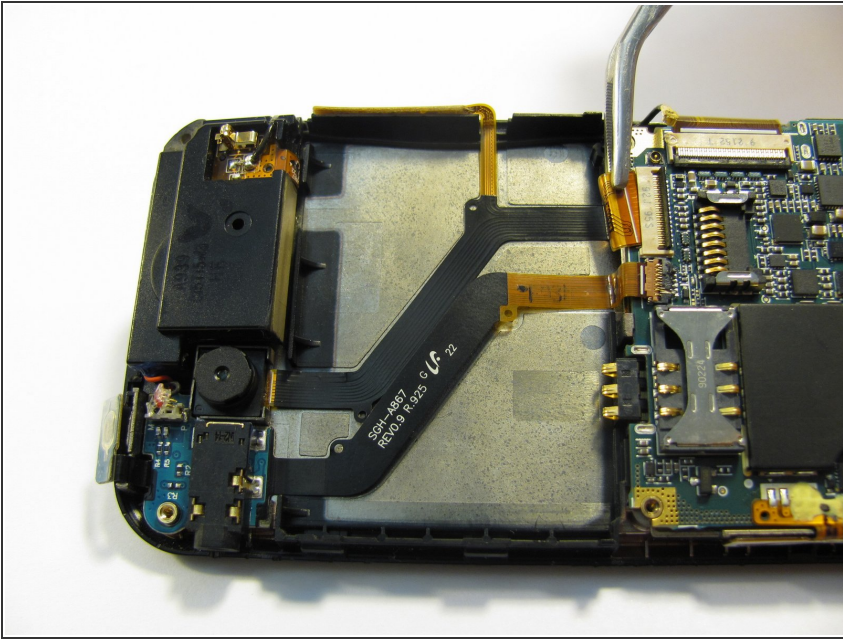
- Peel off the Identification sticker.

Step 6



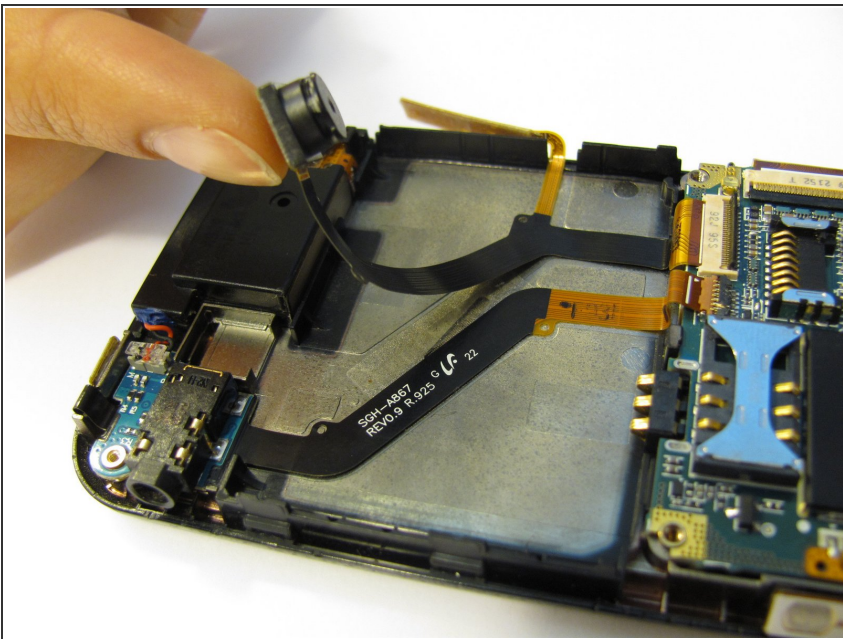
- Peel the button sensor on the side of the motherboard off of the case.

Step 7



- Pop the black hinged-release lever toward its ribbon, then slide the ribbon out.

Step 8



- Peel up the camera attachment.

Step 9



- You will now be able to replace the Camera component with a new part.

To reassemble your device, follow these instructions in reverse order.