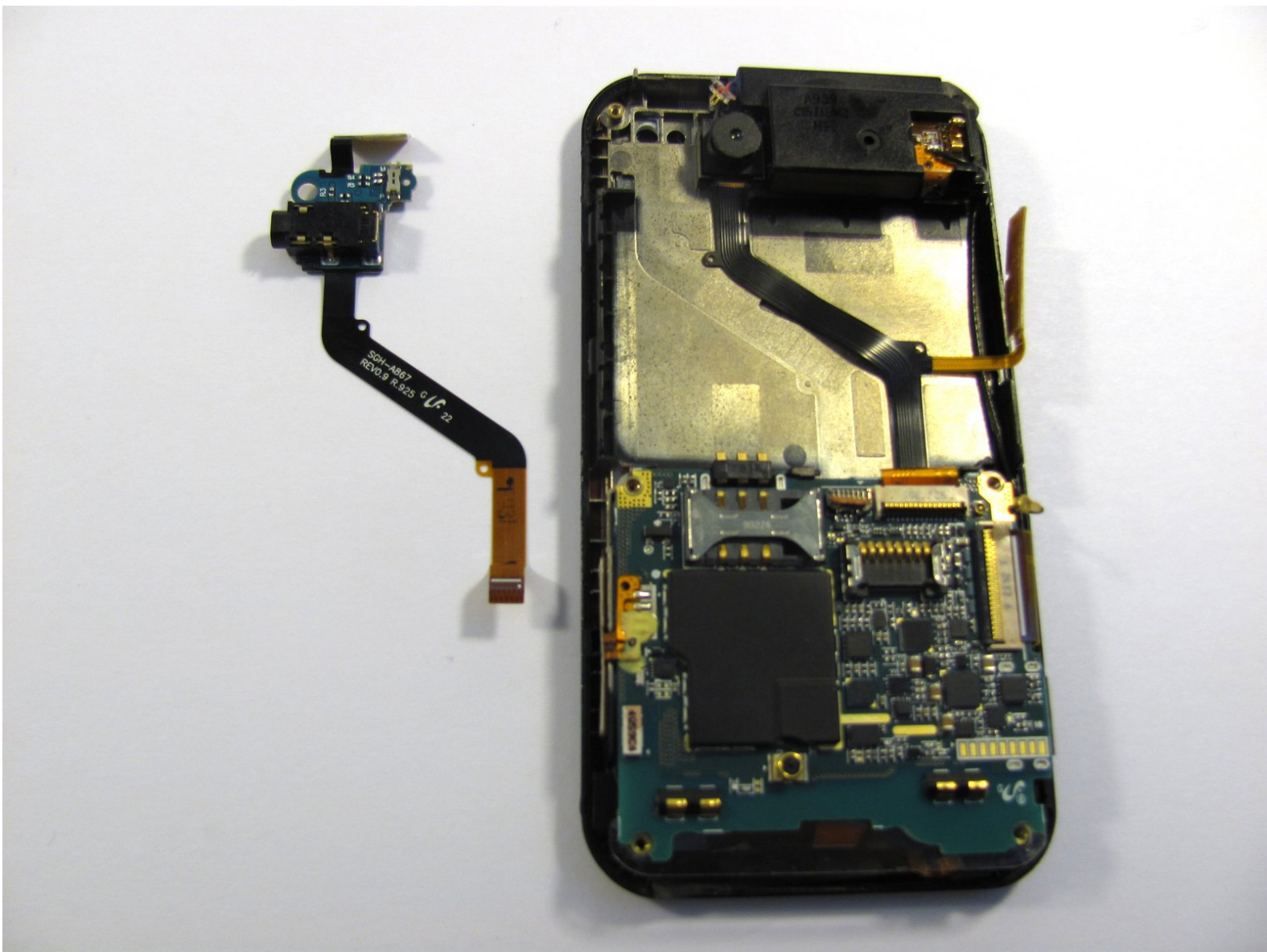




# Samsung Eternity Input Jack Replacement

This guide will show you step-by-step instructions on how to remove the input jack from the phone to replace it with a new one.

Written By: Sven



---

## INTRODUCTION

You will need to find a clean area to work in and have the necessary tools. Follow this guide to gain access to your cellphone's input jack module.

---



### TOOLS:

- [Phillips #00 Screwdriver](#) (1)
  - [Spudger](#) (1)
  - [Tweezers](#) (1)
-

## Step 1 — Back Case



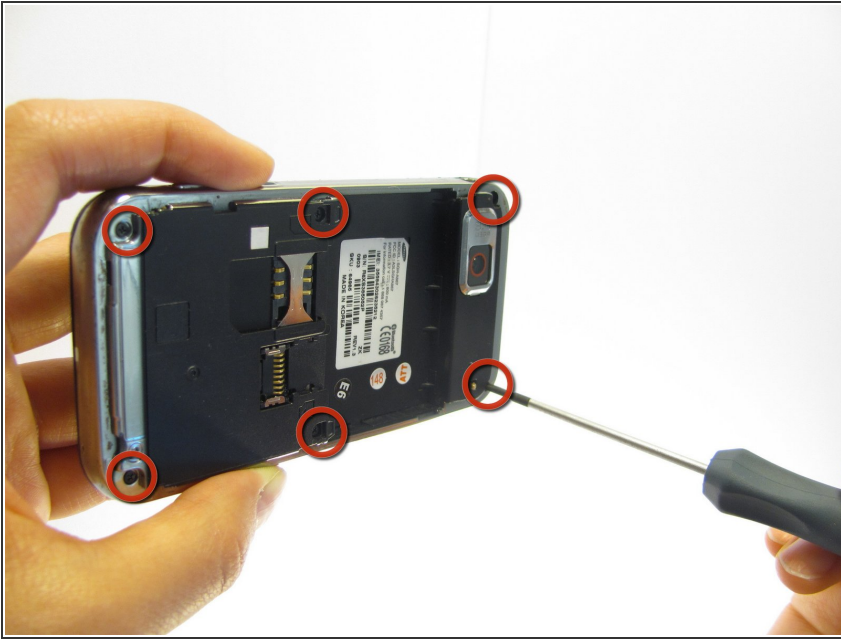
- Remove the back battery cover.

## Step 2



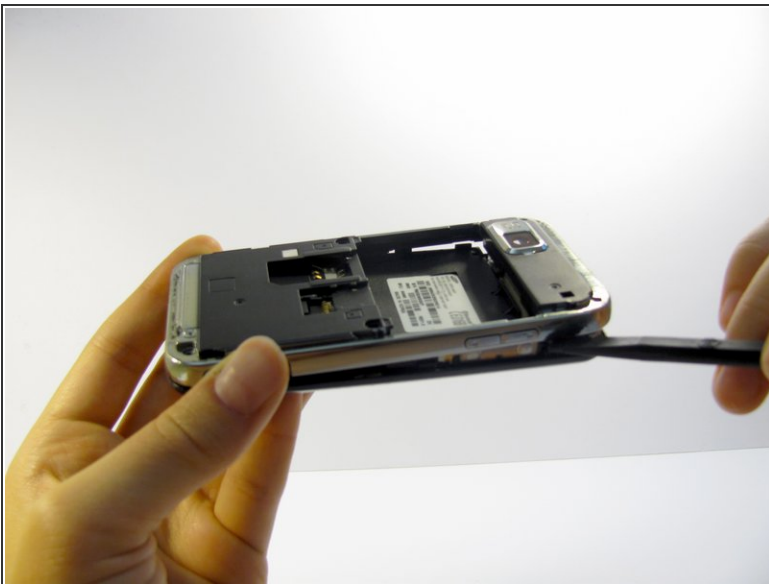
- Remove the phone's battery.

### Step 3



- Remove six (4.28 x 1.25)mm screws.

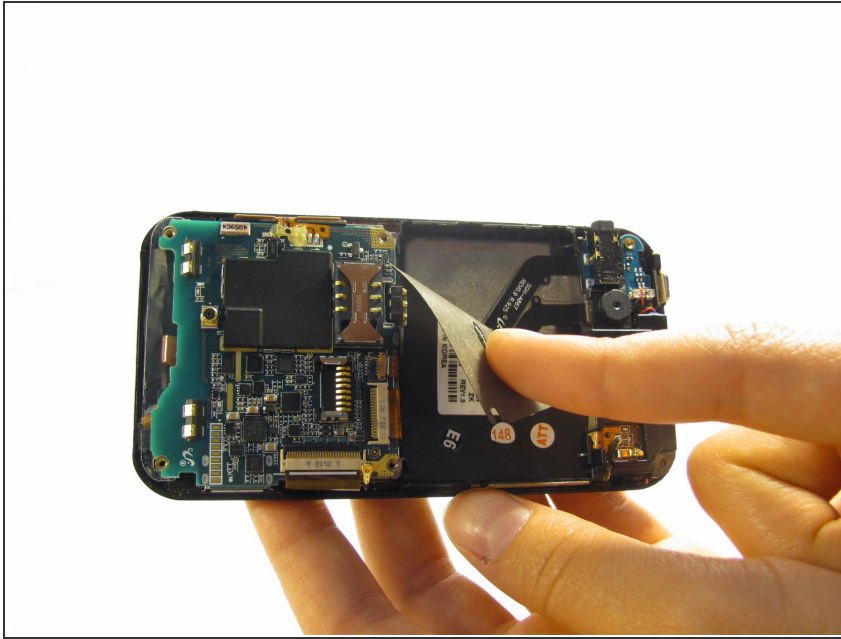
### Step 4



- Use the spudger to gently pry the silver plastic back plate from the body of the phone.

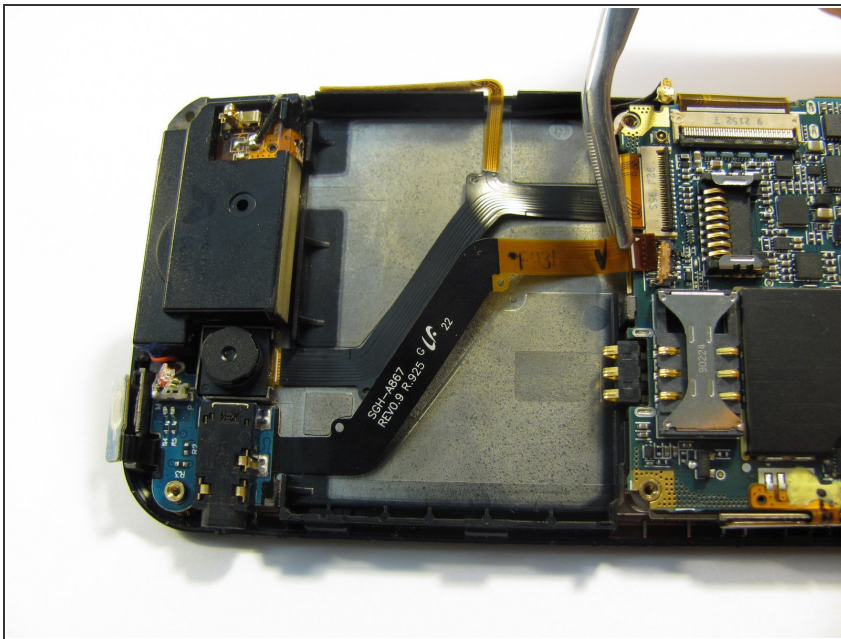


## Step 5 — Input Jack



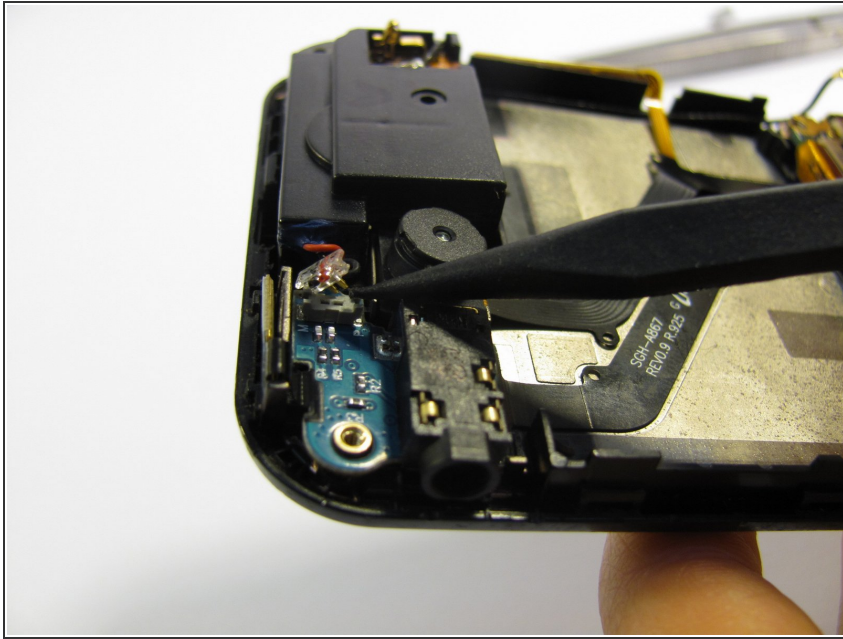
- Peel off the Identification sticker

## Step 6



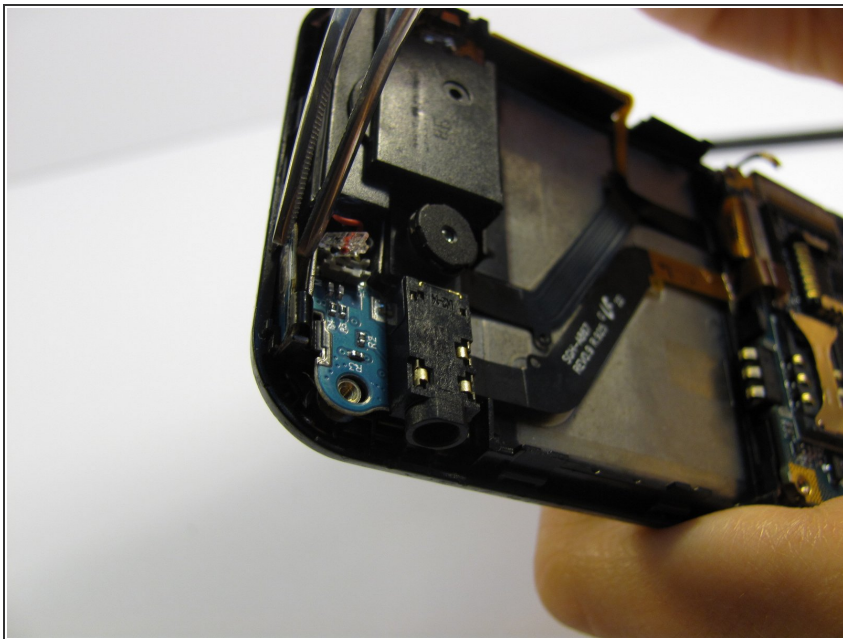
- Pop the red hinged-release lever away from its ribbon, then slide the ribbon out.

## Step 7



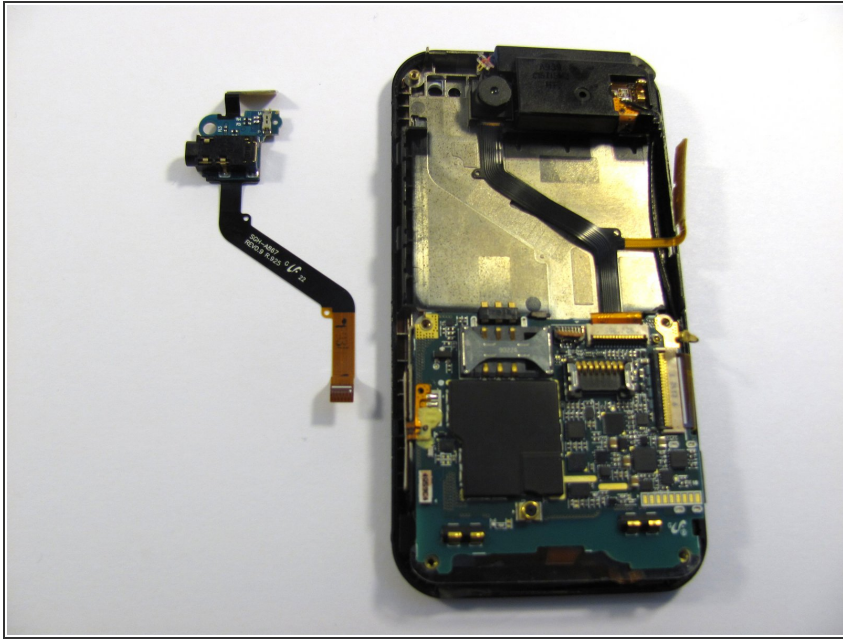
- Pop the speaker plug out of its socket.

## Step 8



- Peel the button sensor off the top of the case.

## Step 9



- Peel the Input jack assembly out of the case.

To reassemble your device, follow these instructions in reverse order.