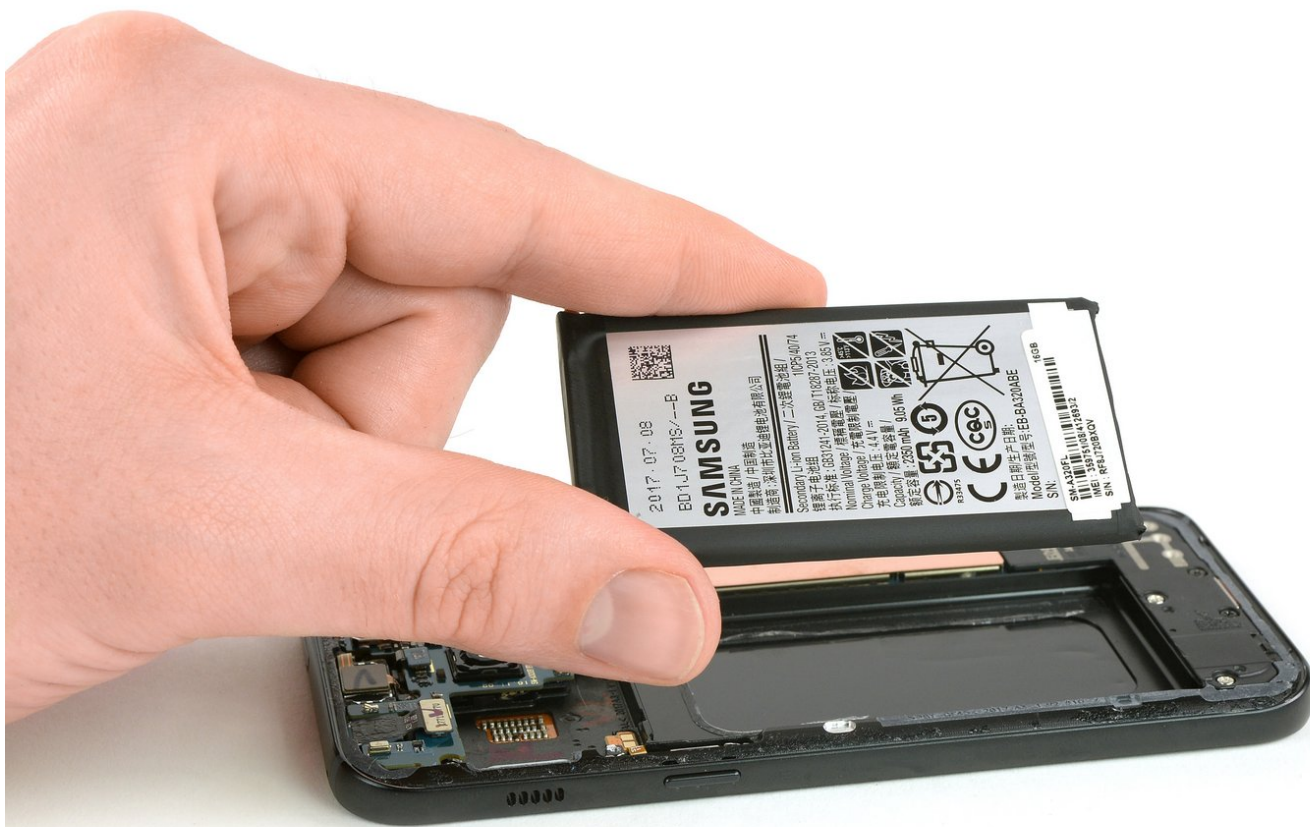




# Samsung Galaxy A3 (2017) Battery Replacement

This guide shows how to replace the battery in your Samsung Galaxy A3 (2017).

Written By: Dominik Schnabelrauch



## INTRODUCTION

Use this guide to replace the battery in your Samsung Galaxy A3 (2017).

Opening the Samsung Galaxy A3 (2017) will **damage the waterproof sealing** on the device. If you do not replace the adhesive seals, your phone will **function normally**, but will **lose its water-protection**.

If your battery is swollen, [take appropriate precautions](#). **Do not heat your phone**. Swollen batteries can be very dangerous, so wear eye protection and exercise due caution, or take it to a professional if you're not sure how to proceed.

You'll need **replacement adhesive** to reattach the battery and back cover when reassembling the device.



### TOOLS:

- [iFixit Opening Picks set of 6](#) (1)
- [Suction Handle](#) (1)
- [iOpener](#) (1)
- [Phillips #000 Screwdriver](#) (1)
- [Tweezers](#) (1)
- [Spudger](#) (1)



### PARTS:

- [Galaxy A3 \(2017\) Replacement Battery](#) (1)

## Step 1 — Back cover replacement



- Power off your phone before beginning disassembly.
  - [Use an iOpener](#) to loosen the adhesive beneath the back cover. Apply the iOpener for at least two minutes. You might want to repeat this step several times during the back cover removal.
- ⚠ The adhesive of the Samsung Galaxy A3 (2017) is very strong. A hair dryer, heat gun, or hot plate may also be used if you aren't able to open the device with the iOpener. Be careful not to overheat the phone—the AMOLED display and internal battery are both susceptible to heat damage.

## Step 2



- Use a small suction handle to create a gap at the bottom end of the Galaxy A3.
- Insert an opening pick and slide the tip to the bottom left corner to cut the adhesive.
- Leave the opening pick in the bottom left corner to prevent the adhesive from resealing.
- Insert a new opening pick and start to cut the adhesive towards the bottom left side of the phone.

## Step 3



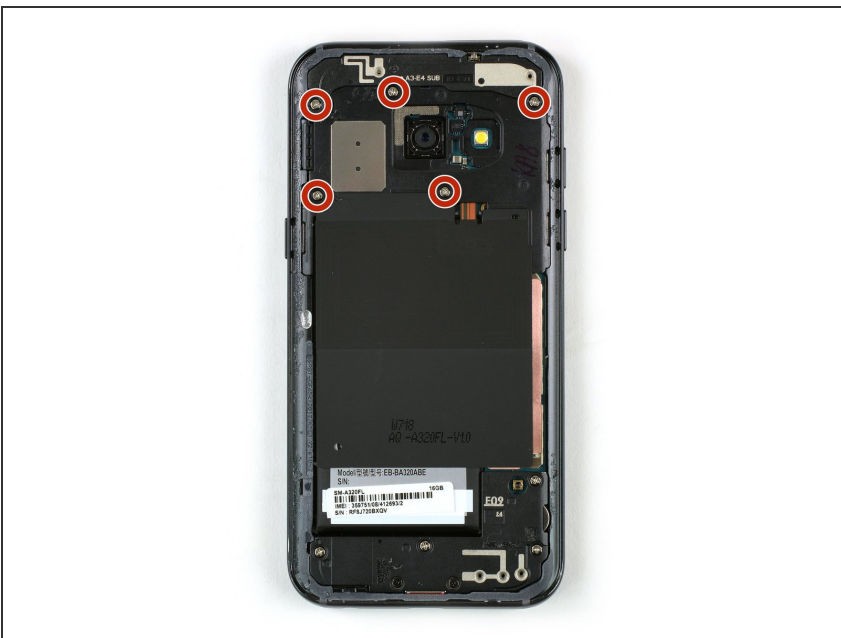
- Use an opening pick to cut the adhesive on all sides of the phone. Leave one opening pick in every corner to prevent the adhesive from resealing.
  - ⚠ [Reuse an iOpener](#) if the adhesive becomes hard to cut. During the removal process the back cover is under tension all the time and is likely to break if the adhesive isn't loose enough.
- Insert an opening pick on the right side of the phone after you cut the adhesive on all sides. Flip it sideways until you can get a good grip on the back cover.

## Step 4



- Remove the back cover from the phone.
- ✦ Before applying new adhesive remove any remaining adhesive from the back cover and the frame and clean the areas with isopropyl alcohol and a lint-free cloth.

## Step 5 — Motherboard cover including NFC antenna and loudspeaker replacement



- Remove the five Phillips #00 screws that hold the motherboard covers in their place.



## Step 6



- Use a pair of tweezers to remove the upper part of the motherboard cover.
- ⓘ The cover is secured by small plastic clamps. Don't break them during the removal procedure.

## Step 7



- Use a pair of tweezers to lift up the motherboard cover including the loudspeaker and the NFC antenna and remove it.

## Step 8 — Battery Disconnect



- Use the flat end of a spudger to disconnect the battery flex connector.

## Step 9 — Battery removal



- [Use an iOpener](#) to loosen the adhesive beneath the battery.

## Step 10

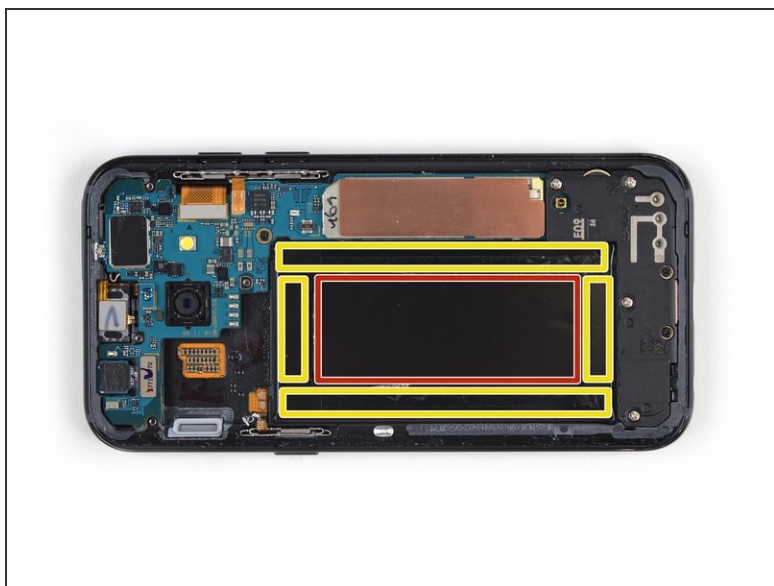


- Insert the flat end of a spudger in the bottom right gap of the battery and start to pry it up just a bit.
- Move the spudger to the bottom left corner of the battery and also pry it up a bit.

⚠ Only insert the spudger as far as the notch on its flat end. See next step for further procedure.



## Step 11



### ⚠ Caution when continuing:

- Only pry in the areas marked in yellow (rim).
- Avoid prying in the area marked in red (center). This is the back side of the display.
- Insert the spudger beneath the battery on the sides of the recess to cut the remaining adhesive until the battery is loose.

## Step 12



- Remove the battery.

To reassemble your device, follow these instructions in reverse order.

**If possible**, turn on your phone and **test your repair** before installing new adhesive and resealing the phone.

**Secure the new battery** with pre-cut adhesive or double-sided adhesive tape and press it firmly into place for 5-10 seconds.

For optimal performance and to avoid software sided errors, **calibrate your newly installed battery**: Drain battery below 10%, then charge uninterrupted to 100%.