



# Samsung Galaxy A3 2015 Battery Replacement

This guide shows you how to replace the battery in your Samsung Galaxy A3.

Written By: Dominik Schnabelrauch



## INTRODUCTION

If your Galaxy A3 won't hold a charge you can use this guide to replace the worn-out battery.

This guide involves removing the display and the midframe. You will need replacement adhesive to reattach the display. The LCD is also glued to the frame and is likely to break when opening the phone.

**Before disassembling your phone, discharge the battery below 25%. The battery can catch fire and/or explode if accidentally punctured, but the chances of that happening are much lower if discharged.**

If your battery is swollen, [take appropriate precautions](#).



### TOOLS:

- [iOpener](#) (1)
- [Suction Handle](#) (1)
- [iFixit Opening Picks set of 6](#) (1)
- [Spudger](#) (1)
- [Jimmy](#) (1)
- [SIM Card Eject Tool](#) (1)



### PARTS:

- [Galaxy A3 \(2015\) Replacement Battery](#) (1)

## Step 1 — Display



- Switch off your phone.
  - ❗ If your screen is cracked you want to cover the front panel with tape to protect yourself from glass shards and get a better grip to lift it.
- [Use an iOpener](#) to soften the glue on the edge of the display. Concentrate on the sides first and then on the bottom part.
- With an iSlack or a suction handle you can lift the display a little bit to get in the gap with an opening pick.
- ⚠ In the beginning just insert the very tip of the opening pick and slide along the side to loosen the glue. Leave the top and bottom alone for now.

## Step 2



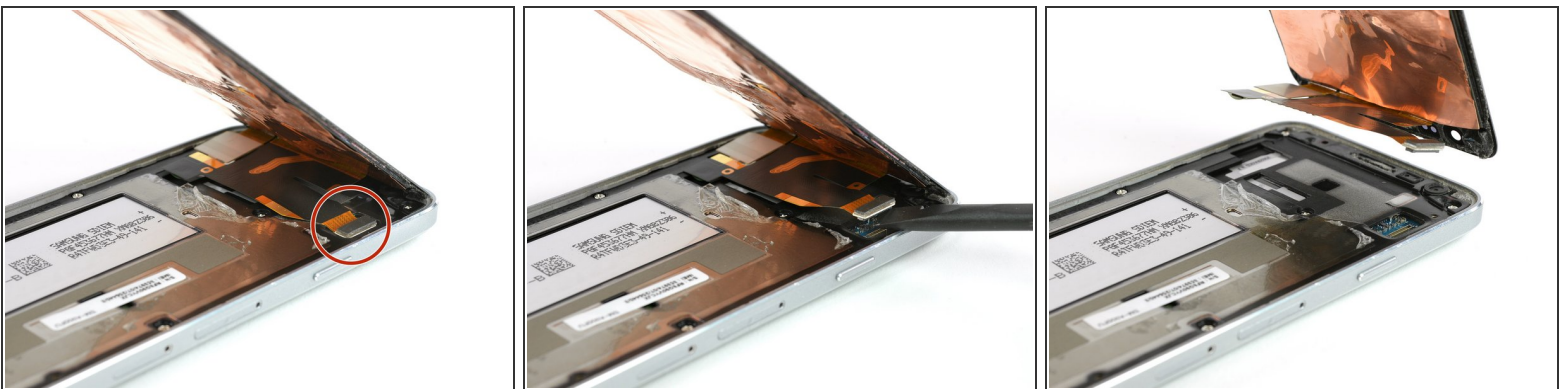
- When the glue is loosened enough on the side you can lift the display a little bit more to get underneath the display with an opening pick.
- Take a second opening pick and work your way just around the bottom edge.
  - ⚠ Be careful where the two touch buttons at the bottom are (see next step for orientation). Take your time and be patient.
- Repeat the last step and this one on the other side.

## Step 3



- [Grab the iOpener](#) once again to heat up the bottom and top part to further soften the glue.
- Now you will be able to move the picks at the bottom closer to the home button and eventually open the display towards the top.
- ⚠ Don't open the display all the way. It is still connected to the motherboard. Also the gold foil behind the display might come off and remain glued to the midframe. You can re-attach it later.
- ⚠ If your display is still working take care to not rip the front panel off of the display. You also want to leave the top part alone to not risk cutting any flex cables.

## Step 4



- In the top right corner you can find the connector of the display. Use a spudger to disconnect it.
- Now you can remove the display.




## Step 5 — Battery



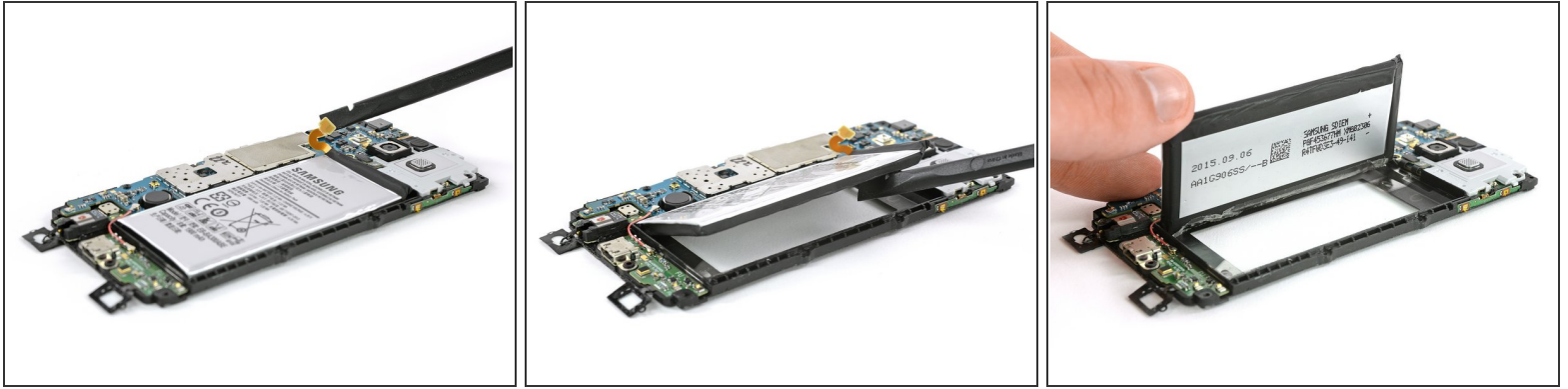
- Remove the ten Phillips #00 screws.
- Lift up the two touch sensors in the lower area of the frame with a spudger. You can skip this step if you are careful while removing the mid frame from the back cover later.

## Step 6



- Remove the SD card tray and the SIM card tray.
- Use a Jimmy to lift up the mid frame on the left side of the phone where the battery is placed.  
 Be careful not to puncture the battery underneath.
- Remove the mid frame with all its components from the back cover.

## Step 7



- Unplug the battery connector with a spudger.
- Use a spudger or an opening pick to get between the midframe and the battery to separate it from the glue.
  - ⚠ The frame around the battery is very fragile and easy to break. If the adhesive behind the battery is too strong, you need to use an iOpener to soften it.
- Remove the battery from the frame.

To reassemble your device, follow these instructions in reverse order. Reapply adhesive where necessary.