



Samsung Galaxy A3 Display Replacement

This guide shows you how to replace the display of your Samsung Galaxy A3.

Written By: Tobias Isakeit



INTRODUCTION

Use this guide to replace a broken display or cracked glass of your Samsung Galaxy A3.



TOOLS:

- [iOpener](#) (1)
- [Suction Handle](#) (1)
- [iFixit Opening Picks set of 6](#) (1)
- [Spudger](#) (1)



PARTS:

- [Galaxy A3 \(2015\) Screen](#) (1)
- [Tesa 61395 Tape](#) (1)

Step 1 — Display



- Switch off your phone.
 - ❗ If your screen is cracked you want to cover the front panel with tape to protect yourself from glass shards and get a better grip to lift it.
- [Use an iOpener](#) to soften the glue on the edge of the display. Concentrate on the sides first and then on the bottom part.
- With an iSlack or a suction handle you can lift the display a little bit to get in the gap with an opening pick.
- ⚠ In the beginning just insert the very tip of the opening pick and slide along the side to loosen the glue. Leave the top and bottom alone for now.

Step 2



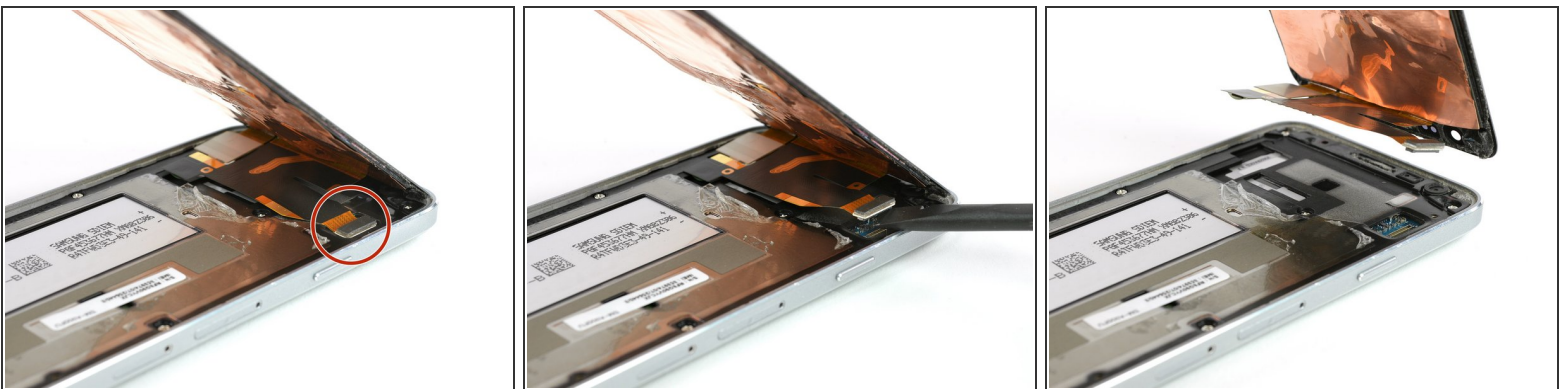
- When the glue is loosened enough on the side you can lift the display a little bit more to get underneath the display with an opening pick.
- Take a second opening pick and work your way just around the bottom edge.
 - ⚠ Be careful where the two touch buttons at the bottom are (see next step for orientation). Take your time and be patient.
- Repeat the last step and this one on the other side.

Step 3



- [Grab the iOpener](#) once again to heat up the bottom and top part to further soften the glue.
- Now you will be able to move the picks at the bottom closer to the home button and eventually open the display towards the top.
- ⚠ Don't open the display all the way. It is still connected to the motherboard. Also the gold foil behind the display might come off and remain glued to the midframe. You can re-attach it later.
- ⚠ If your display is still working take care to not rip the front panel off of the display. You also want to leave the top part alone to not risk cutting any flex cables.

Step 4



- In the top right corner you can find the connector of the display. Use a spudger to disconnect it.
- Now you can remove the display.

To reassemble your device, follow these instructions in reverse order. Reapply adhesive where necessary.