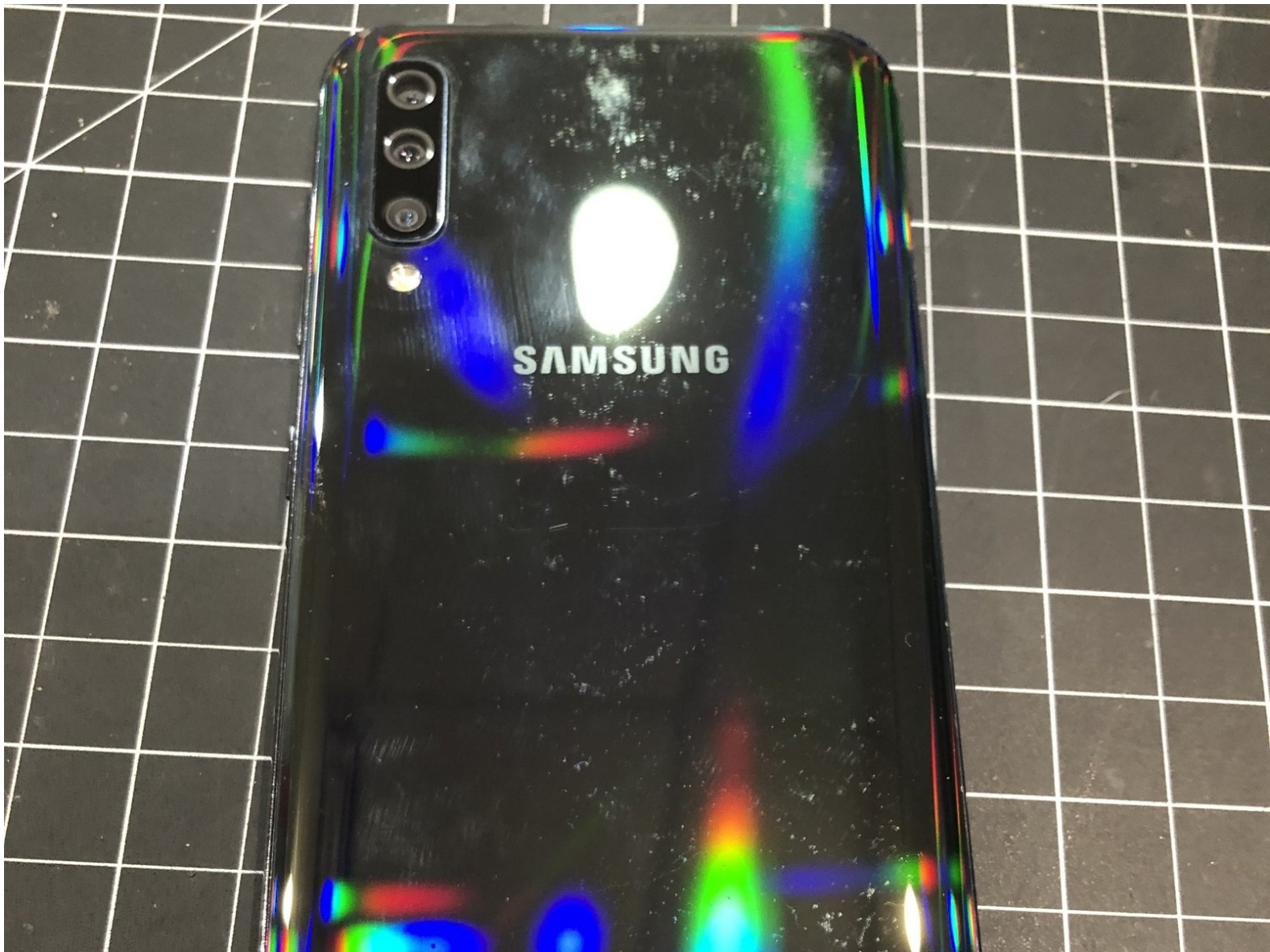




# Samsung Galaxy A50 Disassembly

A quick Disassembly of one of Samsung's best budget options - The Samsung Galaxy A50.

Written By: Chris



# INTRODUCTION

Samsung's Galaxy A50 is an affordable smartphone from late 2019.

With only one screw type, a small amount of adhesive, and an extremely familiar layout inside, this phone has a very straightforward disassembly!

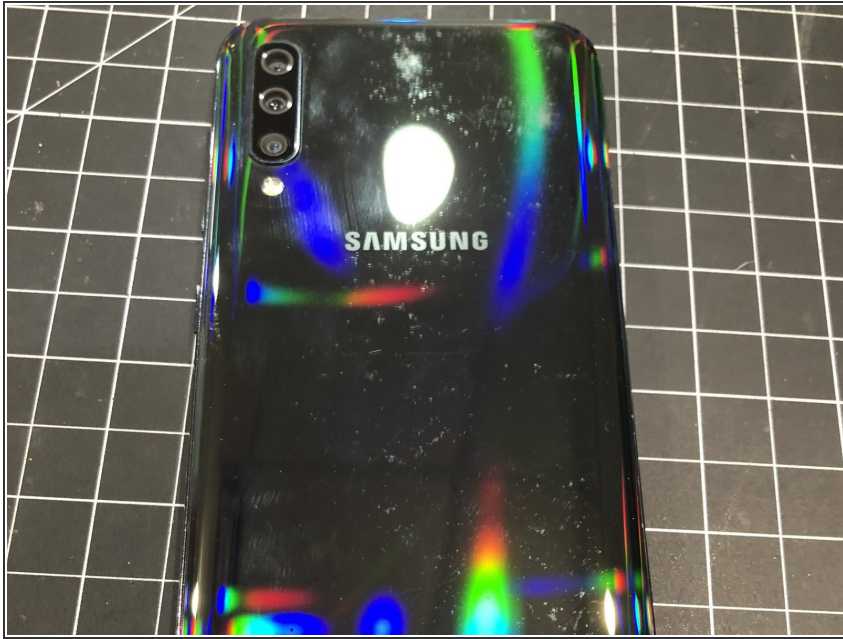
I apologize for the zoomed-in quality of the pictures. They needed to be cropped due to the size of pictures my camera takes. I may go in later and edit these properly if there is any confusion.

---

## TOOLS:

- [Phillips PH000 Screwdriver](#) (1)
  - [1 x Opening Picks](#) (1)
  - [iSesamo Opening Tool](#) (1)
  - [Tweezers](#) (1)
-

## Step 1 — Get Pumped!



- We go in through the back on this phone! The back is made of polycarbonate plastic, so no worries about shattering here! Just make sure to prepare your device by heating it up on a heating pad or using an iOpener.

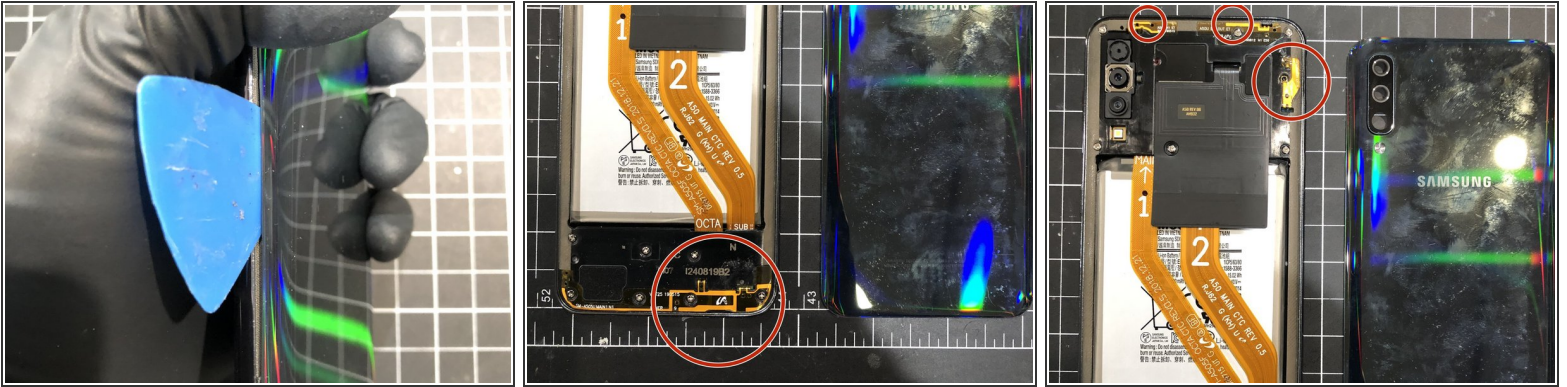
## Step 2 — Sim Tray



- Make sure to remove the SIM/SD Card tray from the left side of the phone. It is easily flexed, so be gentle when removing, and later, reinserting it!

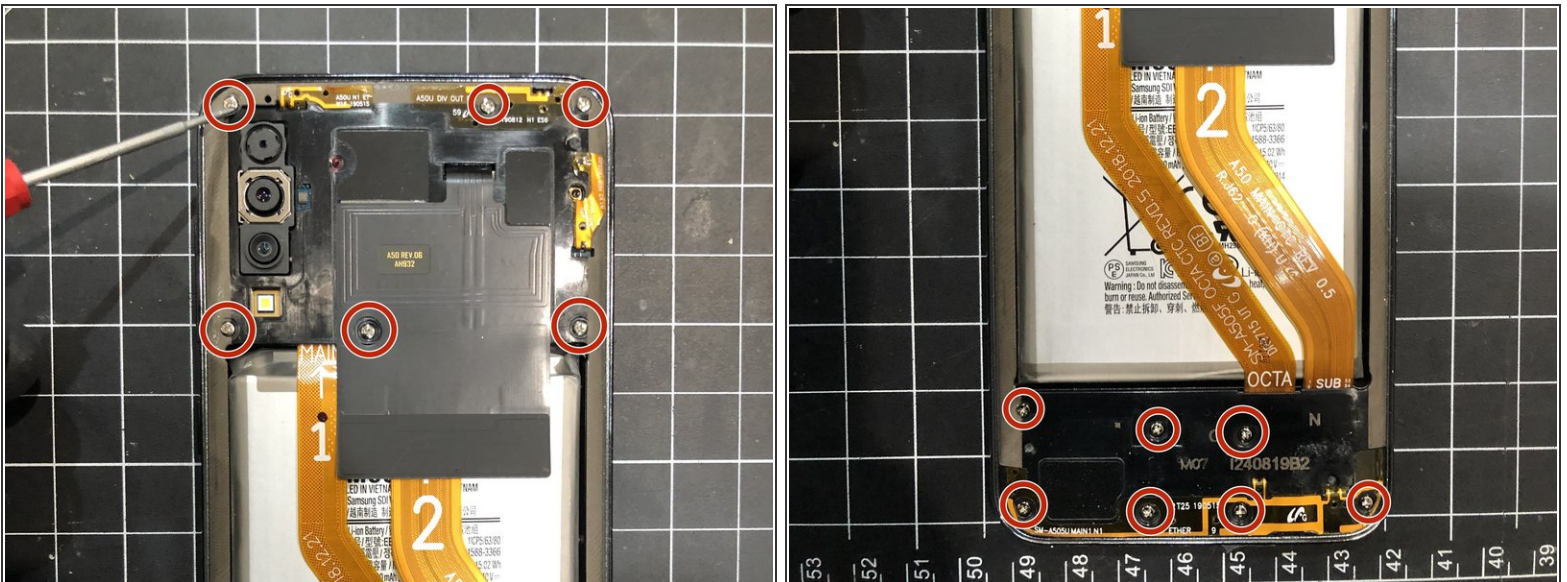


## Step 3 — Back Removal



- Start to separate the back from the midframe as the adhesive loosens. I recommend starting from the left side in the middle with an opening tool, and using a plastic pick to slowly work your way around.
- Be mindful of the areas outlined in red, as some of these flat connectors can get stuck to the back. Be careful not to tear them!

## Step 4 — Midframe screws a-plenty



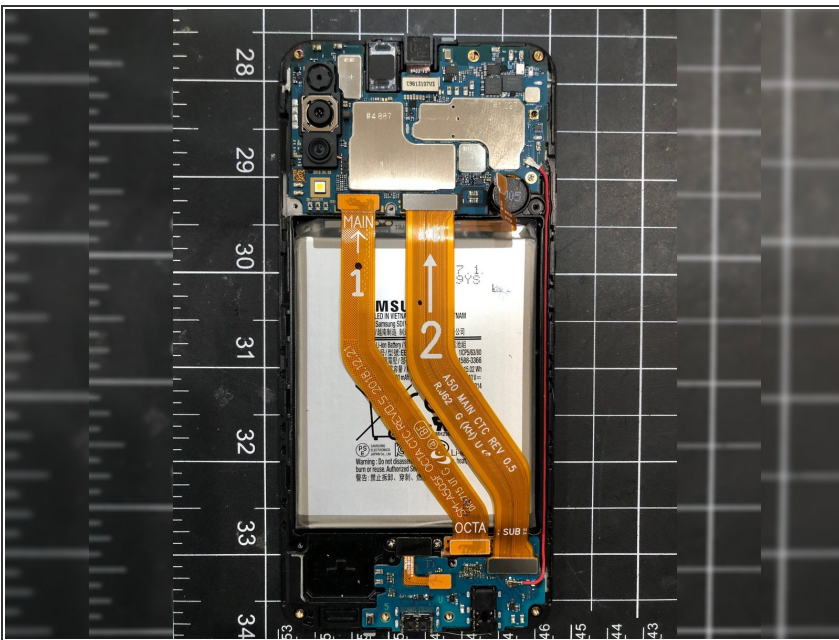
- There are 13 PH000 screws to remove connecting the midframe to the front of the phone. Six on the top, seven on the bottom.

## Step 5 — Midframe removal



- After removing all the screws, get a pick between the midframe and the front of the phone.
- ⚠ Start on the left side of the battery to avoid damaging the antenna cable running along the right side underneath.
- slowly work your way around the midframe until fully separated.

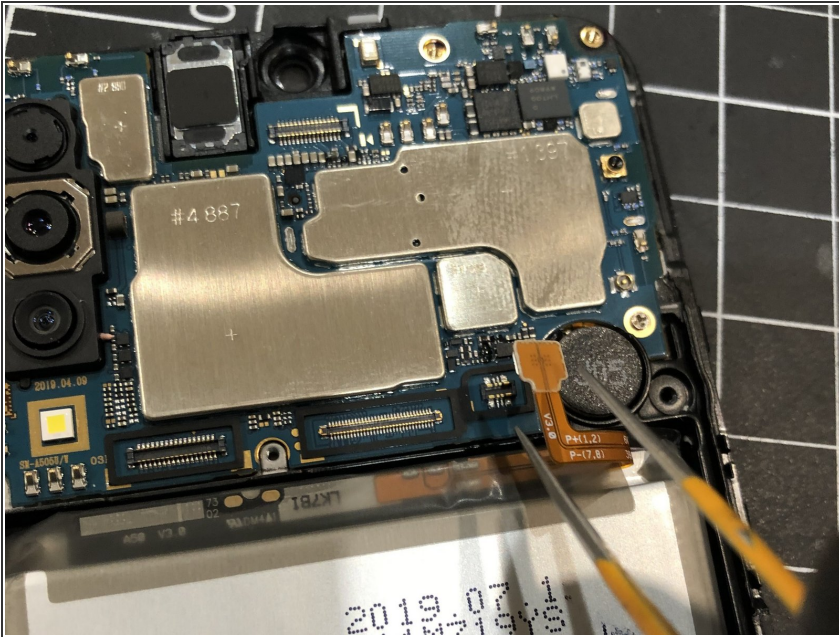
## Step 6 — The worst is over!



- Take a look at that interior! from here you can access all major points of failure!

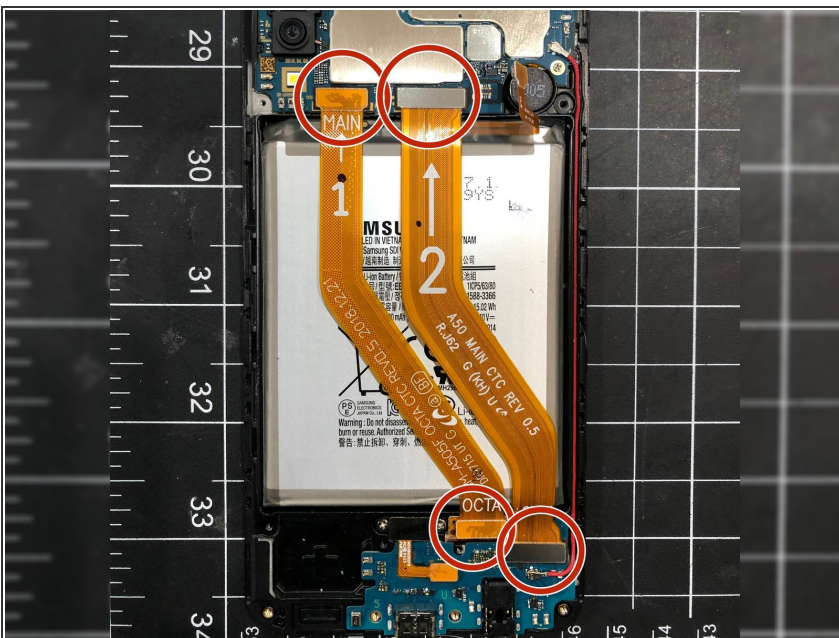


## Step 7 — Battery Disconnection



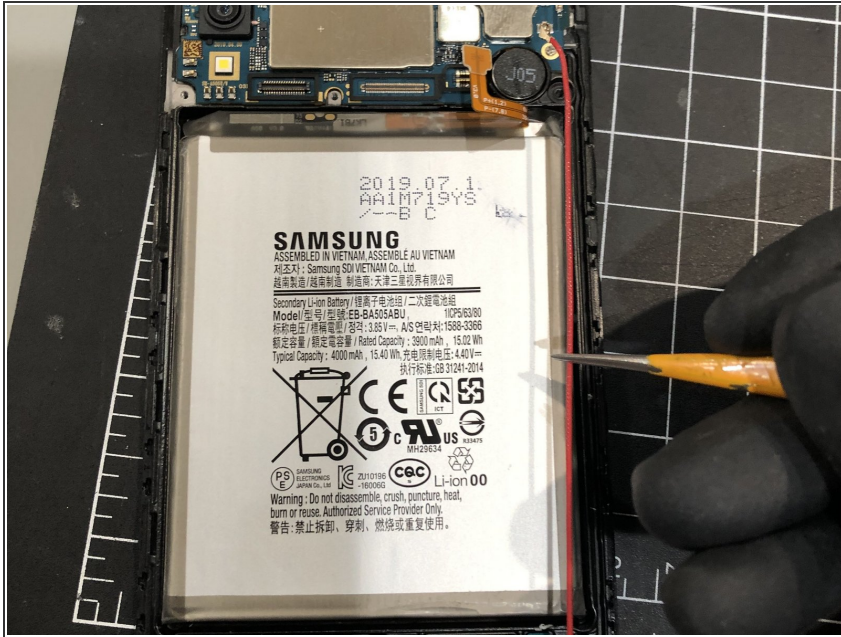
- ⚠ Remove the battery connector before doing any other disconnections on the board!

## Step 8 — Bridge Cable Removal



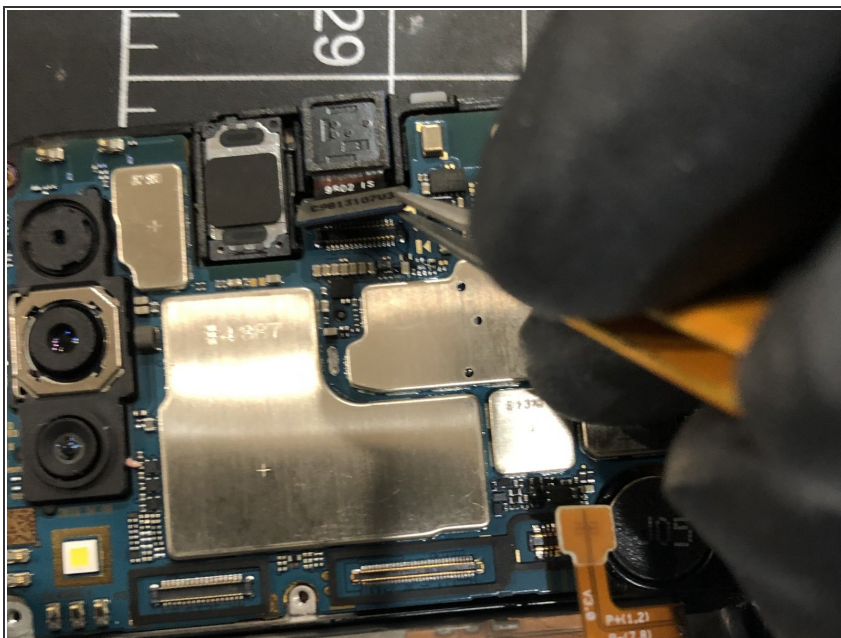
- Disconnect both bridge cables connecting the top and bottom boards. They should pull up relatively easily! Set aside.

## Step 9 — Cable Removal



- Remove the red antenna cable connecting the top and bottom boards and running to the right of the battery.
- ⓘ Don't yank the cable! Gently remove the connections on the top and bottom boards before removing from the frame.

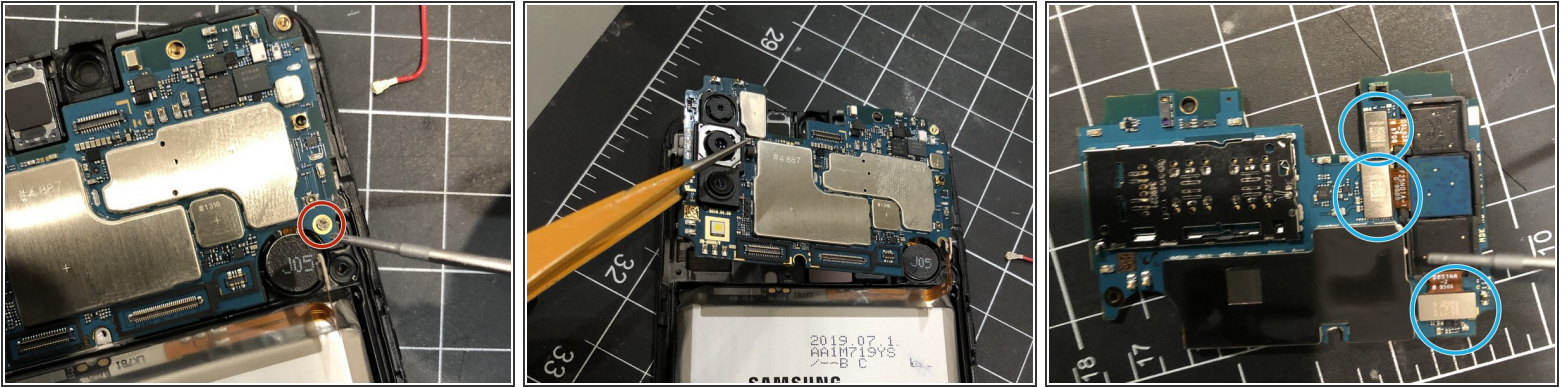
## Step 10 — Front Camera Removal.



- Disconnect the front-facing camera on the main logic board. Remove the camera gently and set aside.

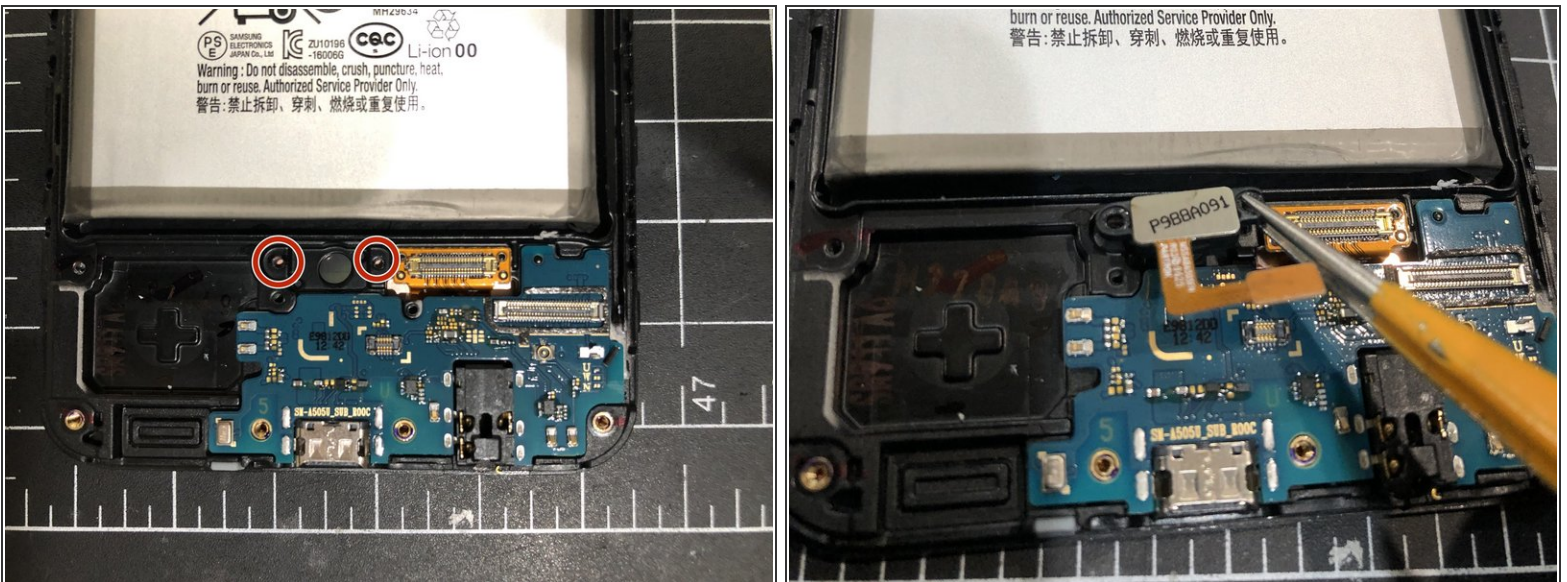


## Step 11 — Main Logic removal



- Remove the single screw holding the Logic board in place
- You can now lift the logic board out of the frame.
- If replacing or removing the rear camera system, all three connectors are individually located on the other side of the board.

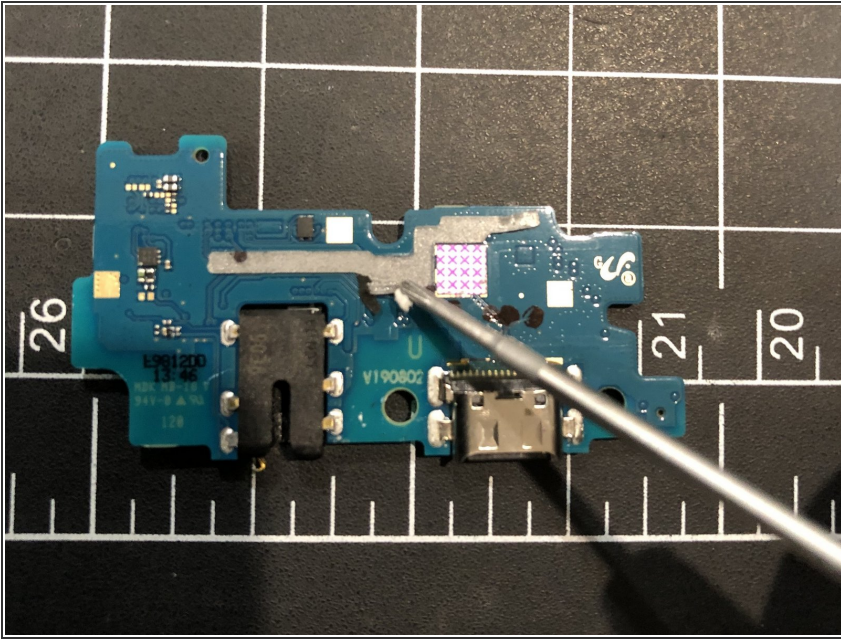
## Step 12 — Fingerprint Sensor Removal



- Disconnect the fingerprint sensor from the charging board,
- Remove the two ph000 screws holding the fingerprint sensor in place, and gently lift out by the plastic brackets on either side.



## Step 13 — Charging Board Removal



- You may now remove the charging board.

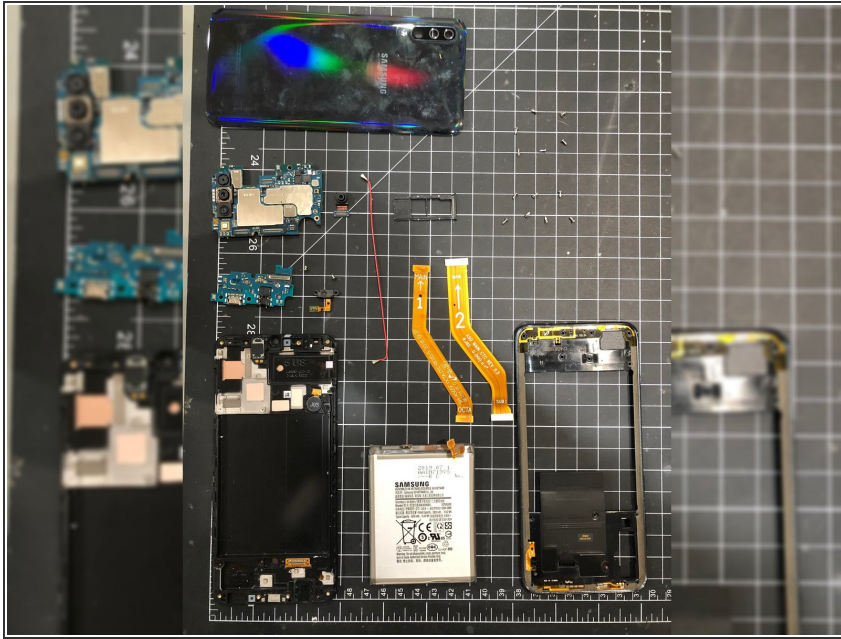
**⚠** This board is held in with adhesive, as pictured, and may need to be gently coaxed out. Do not use excessive force to remove the board!

## Step 14 — Batteries Optional



- The battery is adhered to the back of the frame with two strips of adhesive covering most of the underside.
- ⚠** If removing the battery, be careful! As a precaution, make sure the battery is as discharged as possible before attempting removal.
- ⚠** Do not use metal tools when removing the battery to reduce risk of puncturing it. Heat and a loosening solvent of some kind are highly recommended!

## Step 15 — You're done!



- Great Job! You've separated all of the major components of the phone!
- To reassemble, just follow the steps in reverse order.