



Samsung Galaxy Ace Touch screen Glass, LCD Display, Earpiece, Loudspeaker, Main Camera Replacement

Samsung Galaxy Ace Touch screen Glass, LCD Display Replacement

Written By: ZFix



INTRODUCTION

S5830, S5830i - how to disassemble and change / replace the loudspeaker, earpiece, main camera, LCD Display, Touch screen Digitizer Glass, etc.

[video: <https://www.youtube.com/watch?v=pMEx34gMtLI>]



TOOLS:

- [Spudger](#) (1)
 - [iFixit Opening Tools](#) (1)
 - [Phillips #00 Screwdriver](#) (1)
 - [Tweezers](#) (1)
-

Step 1 — Touch screen Glass, LCD Display, Earpiece, Loudspeaker, Main Camera



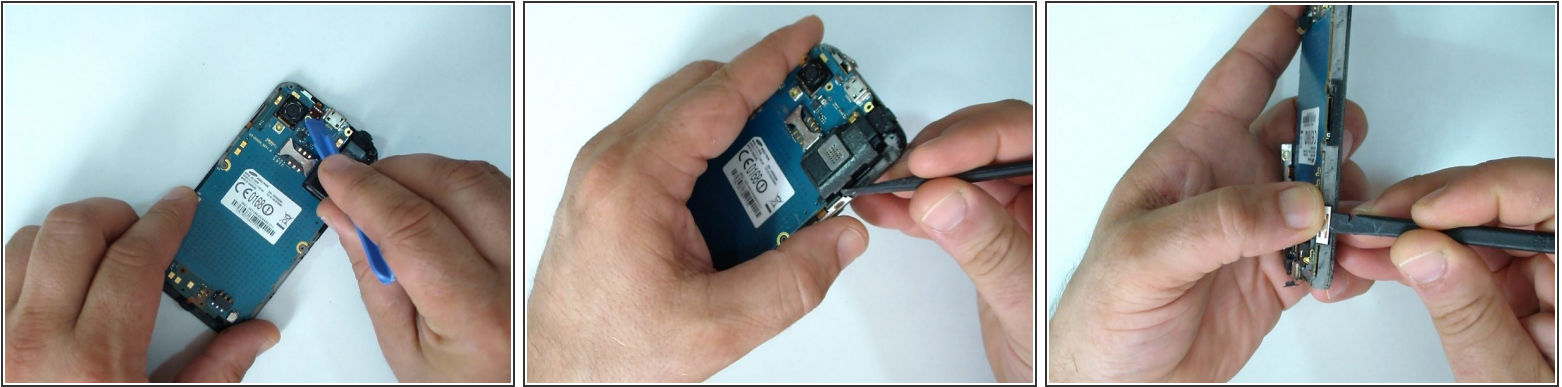
- Switch off the phone.
- Remove the battery and any installed SIM and memory card.

Step 2




- Remove the 7 Phillips screws.
- Use a plastic tool to remove the back cover.
- vibrating motor

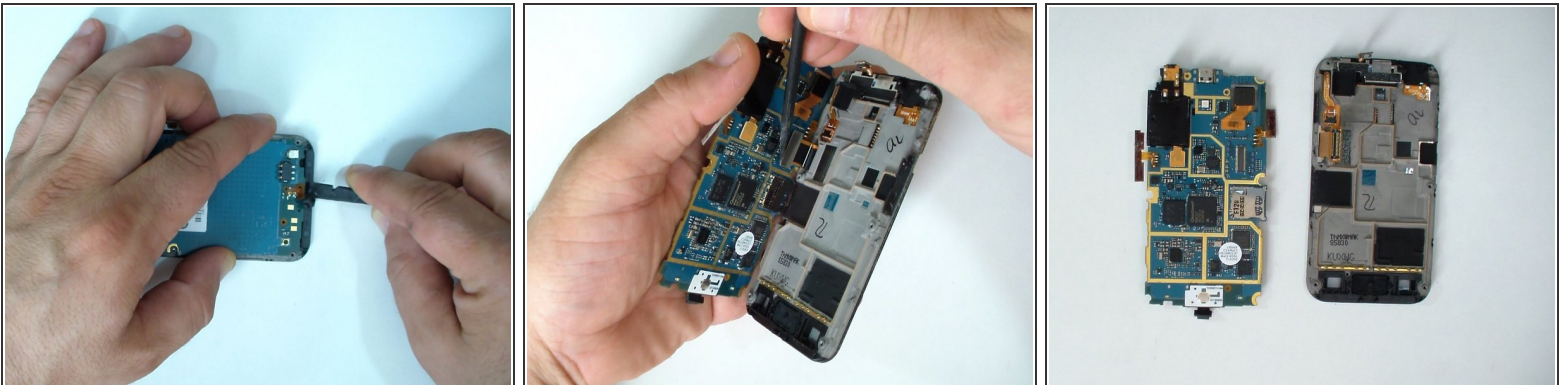
Step 3



- Disconnect the earpiece & light sensor flex cable.
- Take off the Volume Up/Down buttons flex cable.
- Do the same with the Power button flex cable.

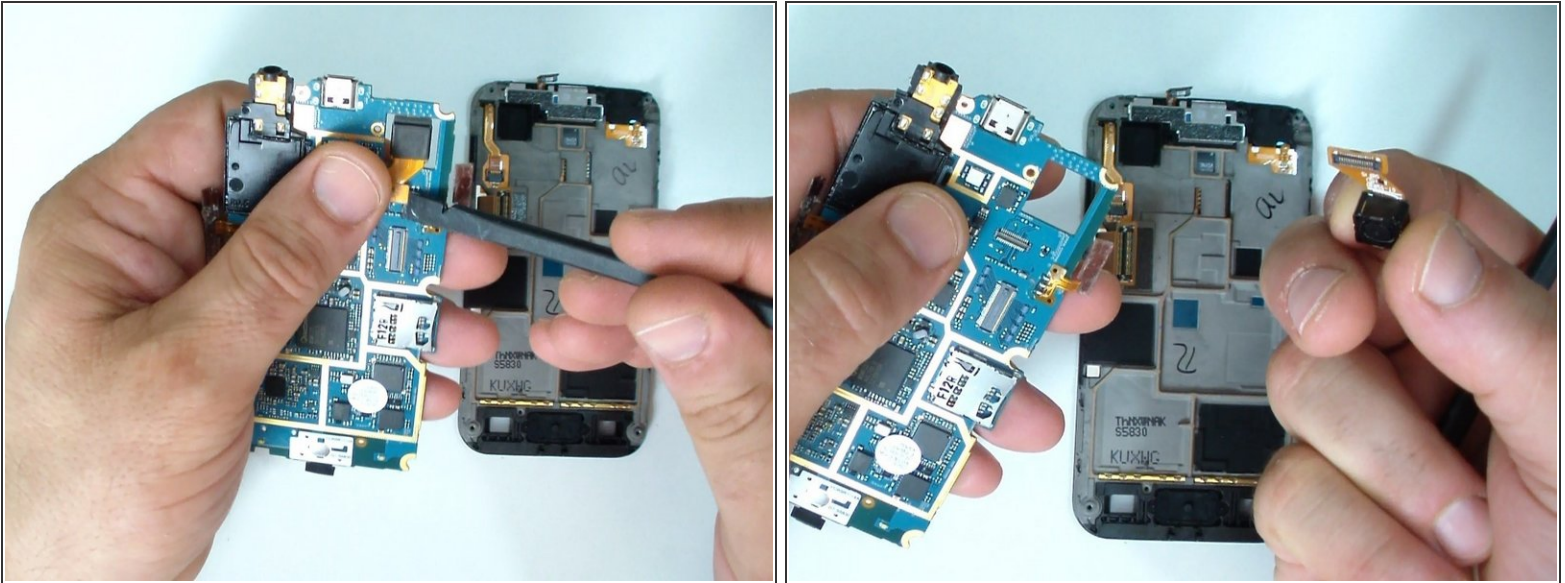
 Be careful don't brake the flex cables.

Step 4



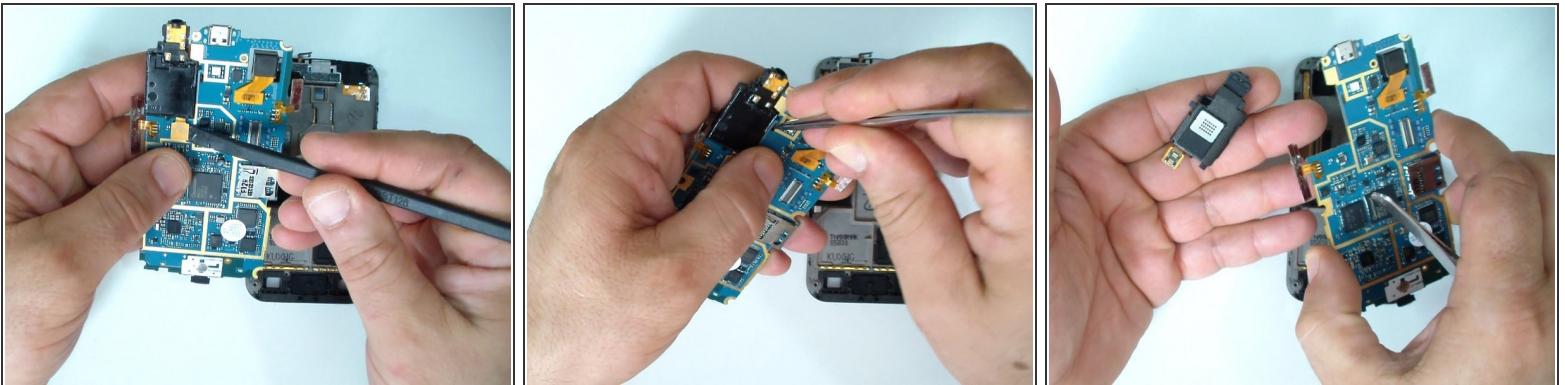
- Lift the microphone.
- Lift the board from the right side and disconnect the LCD display flex cable.
- Remove the board from the middle frame.

Step 5



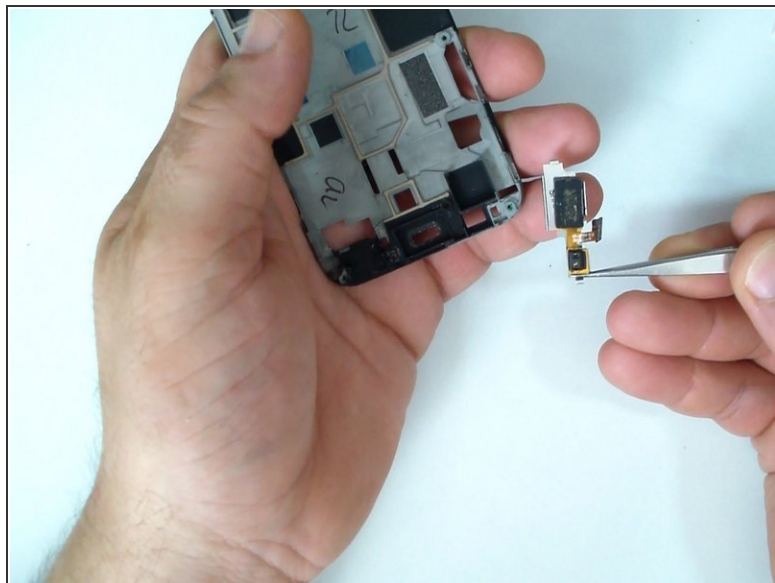
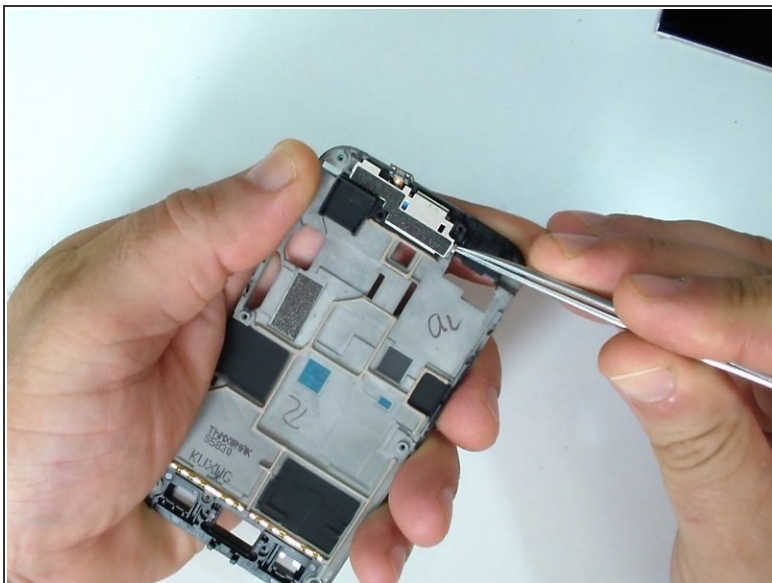
- This is the main camera.

Step 6



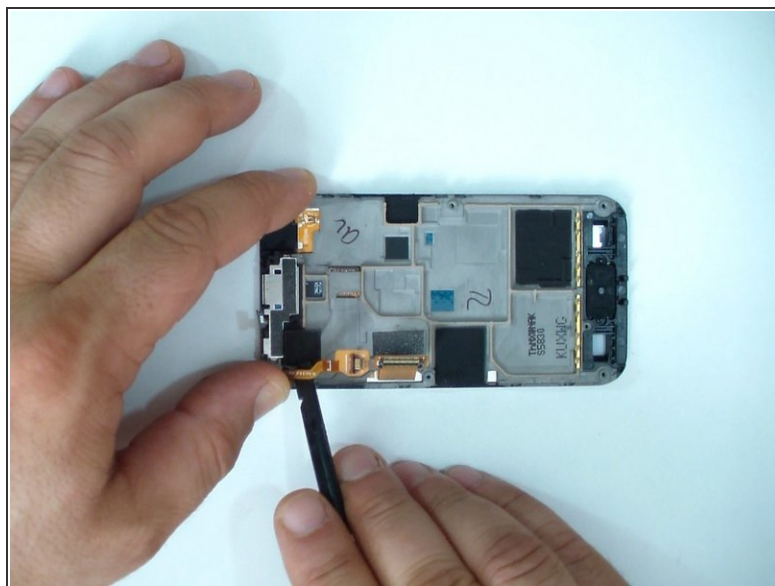
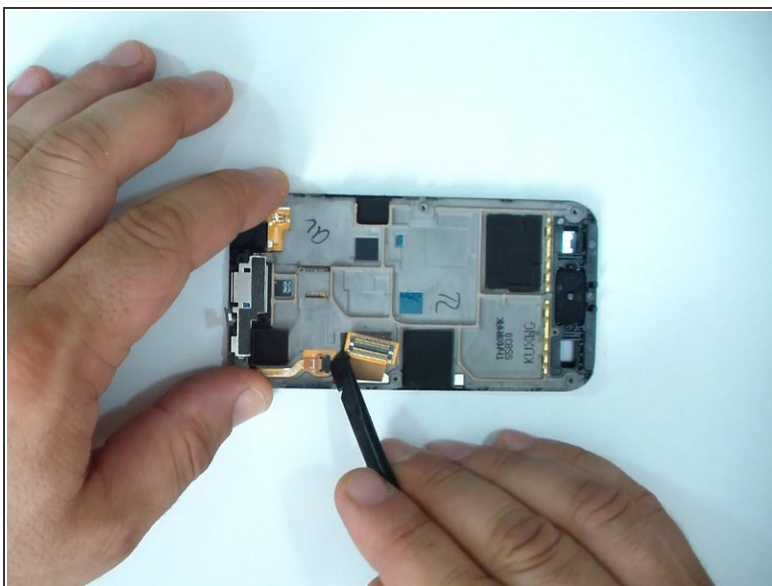
- This is the loudspeaker & audio jack connector module.

Step 7



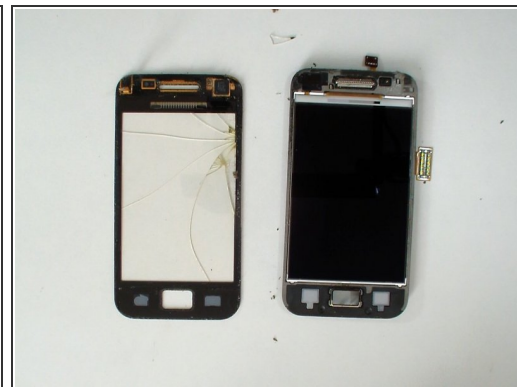
- Loudspeaker and light sensor module,

Step 8



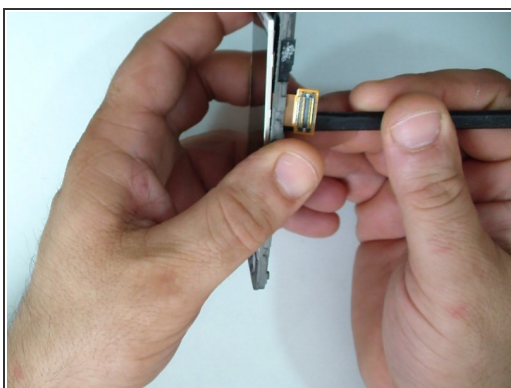
- Disconnect the touch screen flex cable.

Step 9



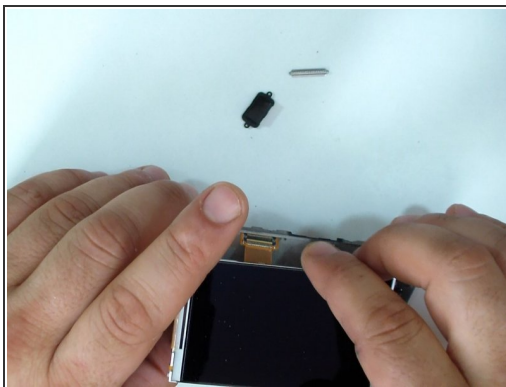
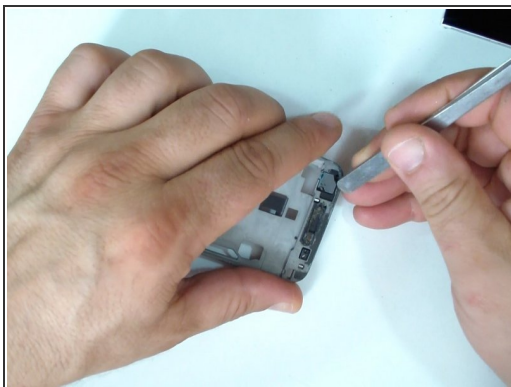
- Use a hair dryer and warm the touch screen glass to make adhesive soften.
- Use a plastic tool for separating the glass from the middle frame.

Step 10



- Again by using a plastic tool, separate the LCD display from the middle frame.

Step 11



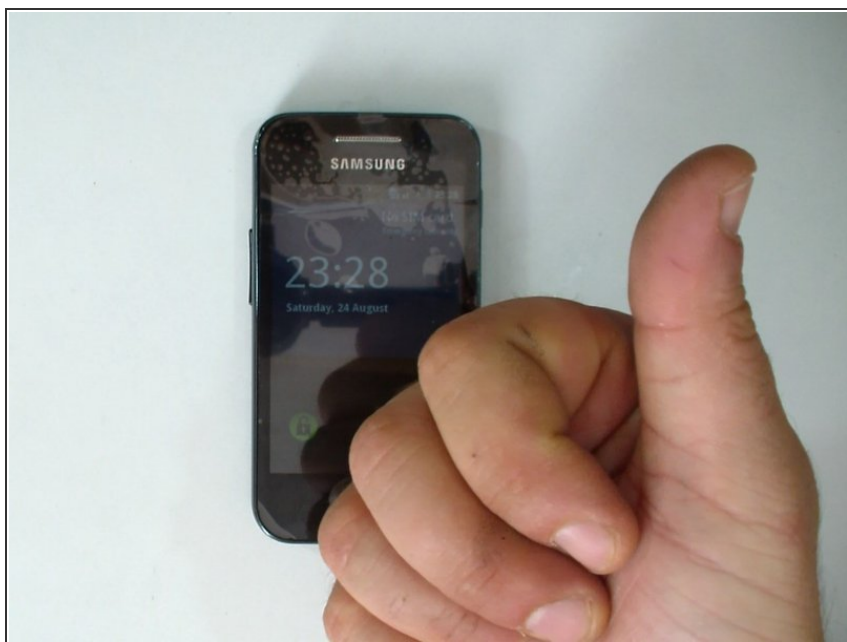
- Clean the middle frame and install the LCD display.

Step 12



- Install the touch screen and start with reassembling.

Step 13



- That is all.
- .
- .
- .
- .
- **Did you do it successfully?**

To reassemble your device, follow these instructions in reverse order.