



Samsung Galaxy Alpha Battery Replacement

Samsung Galaxy Alpha Battery Replacement

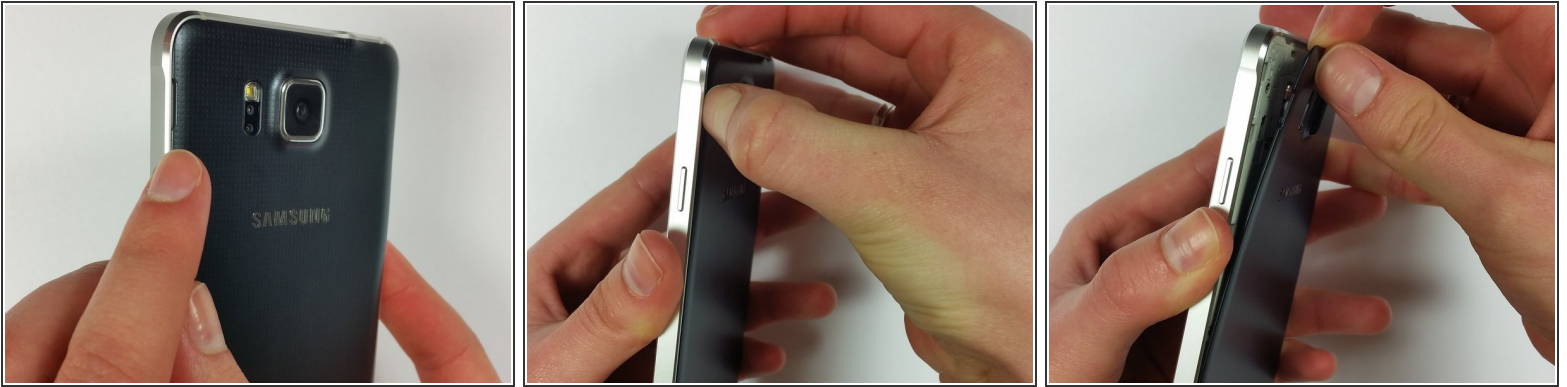
Written By: Jon Brausch



INTRODUCTION

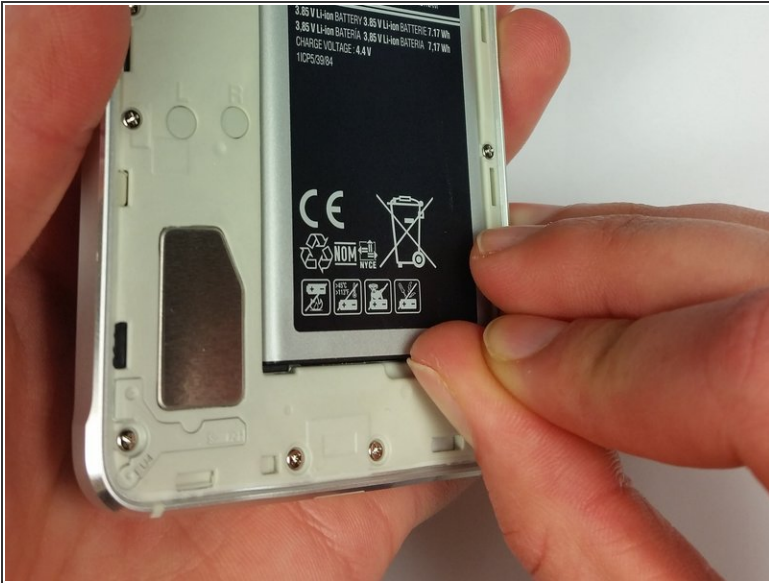
Use this guide to remove the battery in order to access other parts of the phone.

Step 1 — Removing the Back Panel



- On the back panel of the phone, find the slot that is on the top left side next to the flashlight.
- Insert your fingernail or prying tool into the slot and lift up to slightly open the top left corner of the back panel.
- Slide your fingernail or prying tool around the outer edge of the back panel to fully release it from the phone.

Step 2 — Battery



- ❗ Make sure the device is powered down before moving forward.
- ⚠ Since the NFC antenna is glued to the battery, make sure the replacement also includes one.
 - Locate the slot at the base of the battery and insert your thumb.
 - Push slightly toward the battery and out, away from the phone to free the battery.

To reassemble your device, follow these instructions in reverse order.