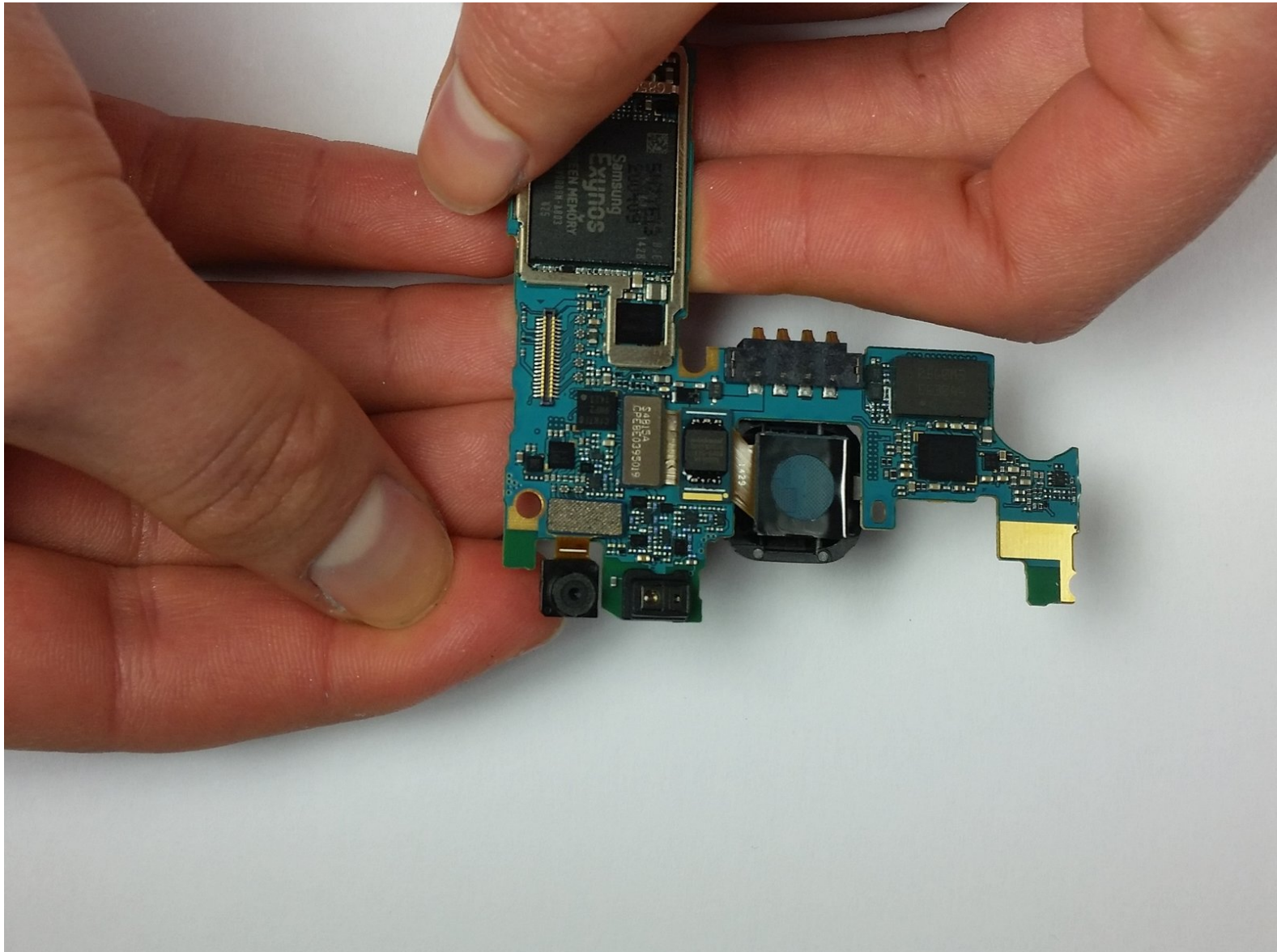




Samsung Galaxy Alpha Front Camera Replacement

Samsung Galaxy Alpha Front Camera Replacement Guide

Written By: Jon Brausch

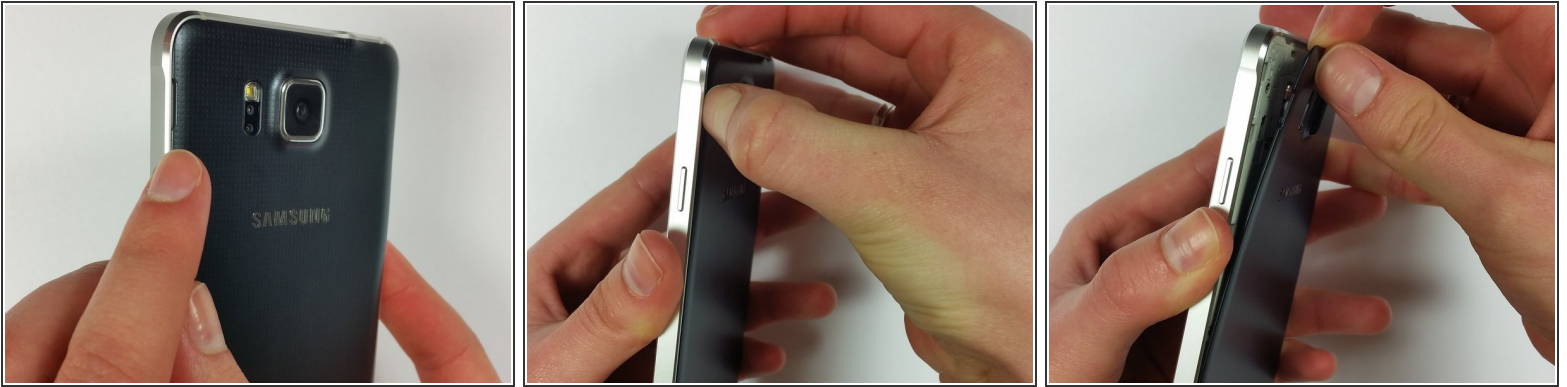




TOOLS:

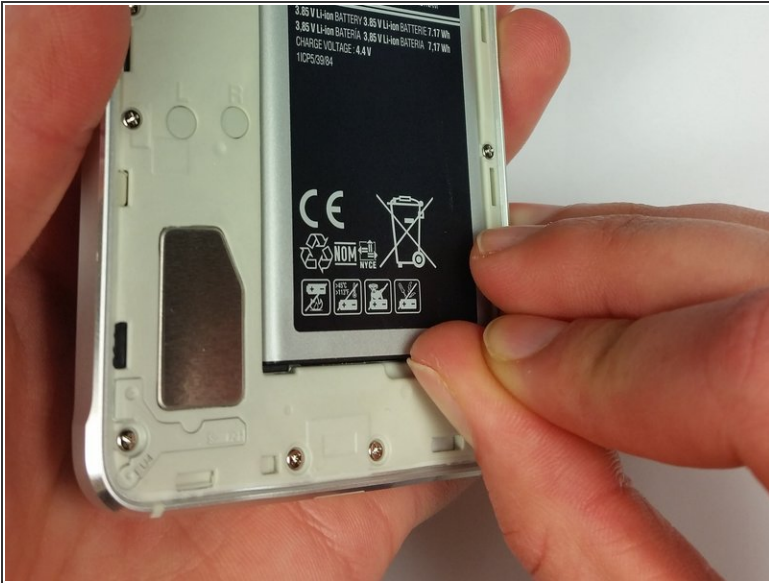
- [iFixit Opening Tools](#) (1)
- [iFixit Opening Picks set of 6](#) (1)
- [iOpener](#) (1)
- [Tweezers](#) (1)
- [Phillips #000 Screwdriver](#) (1)

Step 1 — Removing the Back Panel



- On the back panel of the phone, find the slot that is on the top left side next to the flashlight.
- Insert your fingernail or prying tool into the slot and lift up to slightly open the top left corner of the back panel.
- Slide your fingernail or prying tool around the outer edge of the back panel to fully release it from the phone.

Step 2 — Battery



- ❗ Make sure the device is powered down before moving forward.
- ⚠ Since the NFC antenna is glued to the battery, make sure the replacement also includes one.
 - Locate the slot at the base of the battery and insert your thumb.
 - Push slightly toward the battery and out, away from the phone to free the battery.

Step 3 — Display Assembly



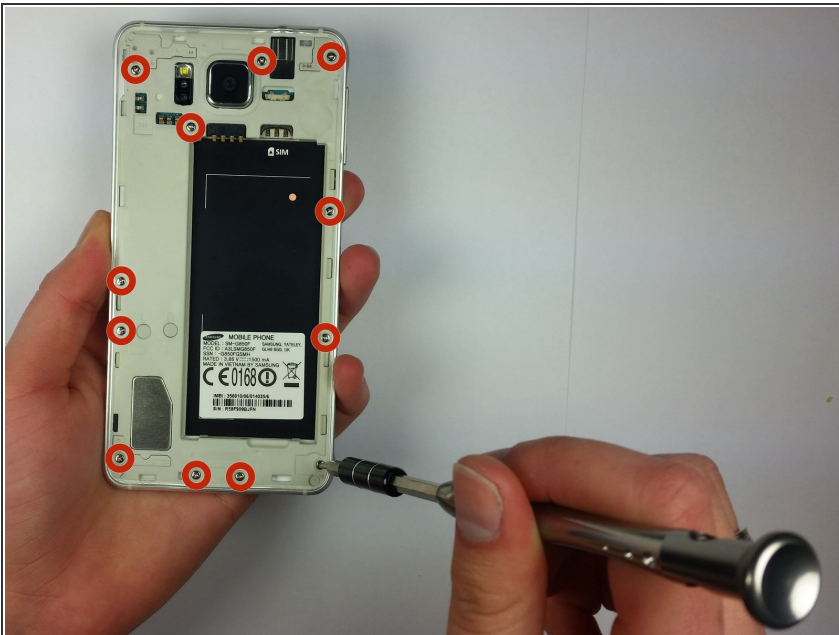
- To remove the back panel of the device, first find the slot next to the flashlight. Then insert your fingernail or prying tool into the slot and lift gently, around the perimeter, to fully remove the panel.

Step 4



- ⓘ Make sure your device is powered down before proceeding.
- ⚠ An NFC antenna is including with the battery, so ensure that the replacement has one.
 - Locate slot at the base of the battery and insert your thumb.
 - Push up/toward the battery while lifting up and away to release from slot.

Step 5 — Remove Screws Holding Back Case



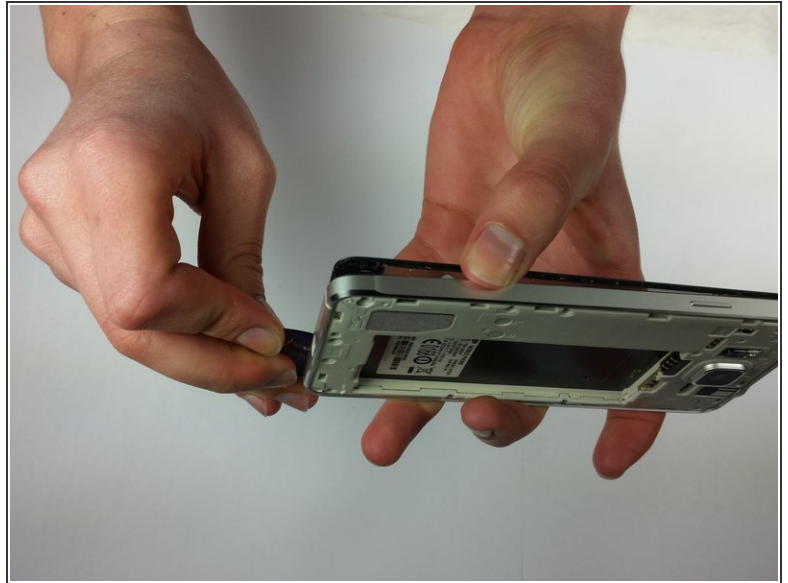
- ⓘ This step is not needed for replacing the screen. Skip this step if you're **only** replacing the screen. This step is important for accessing other components.
- Use a JIS #000 screwdriver to remove all twelve 3mm screws that surround the back of the phone.




Step 6 — Use iOpener To Heat Adhesive



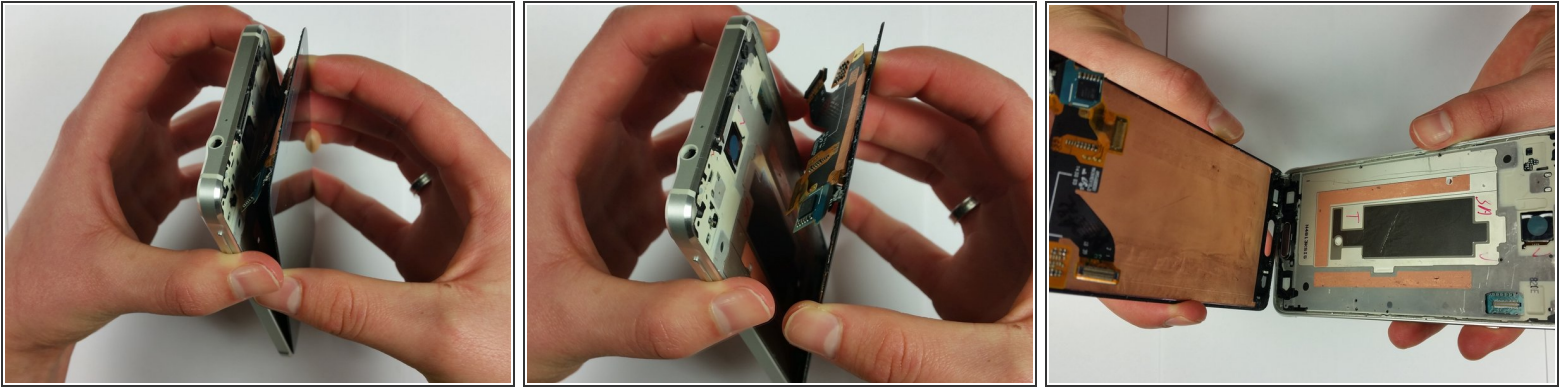
- Heat your iOpener in the microwave for 30 seconds.
- Place the iOpener on the front screen. Move the iOpener so all parts of the screen are heated evenly.
- After multiple heating cycles, proceed to next step.
- ☑ Make sure screen is thoroughly heated before moving forward. More heat cycles makes removal easier.

Step 7 — Use an Opening Pick to Pry Off the Screen



-  Ensure you have thoroughly heated the adhesive before attempting to pry the screen off.
-  Do NOT press on the back of the phone while attempting to lift the screen. This will create cracks in the glass.
-  At the bottom of the touch screen, under the menu buttons, there are connections that can be easily broken. When taking the adhesive off the bottom section, work carefully to prevent damage.
- Slide opening pick around perimeter of the glass. Make sure not to push edge too far under the screen.

Step 8



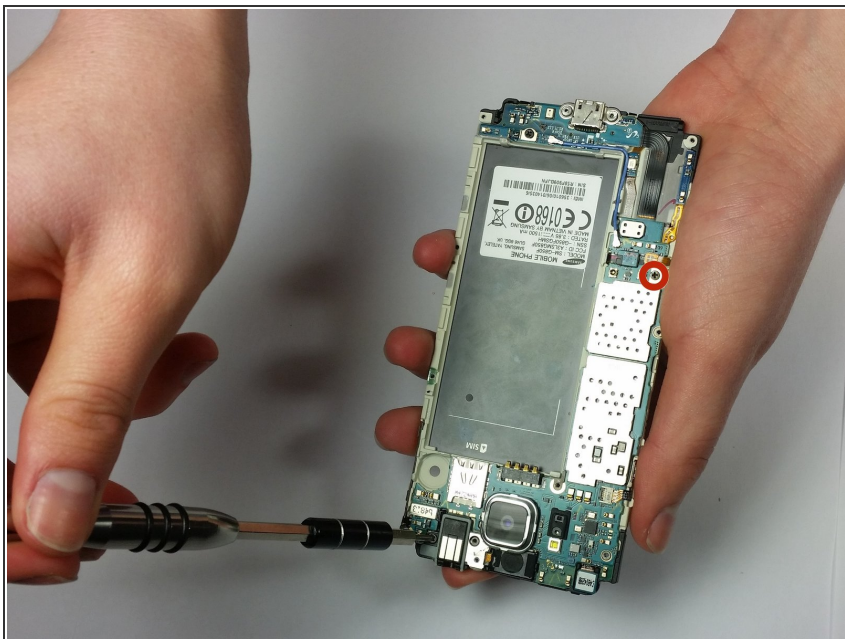
- Gently pry the screen up and lift off.
- ☑ Make sure to lift the top of the screen only, so you don't break the button connections on the bottom of the phone.

Step 9 — Remove Inner Back Panel



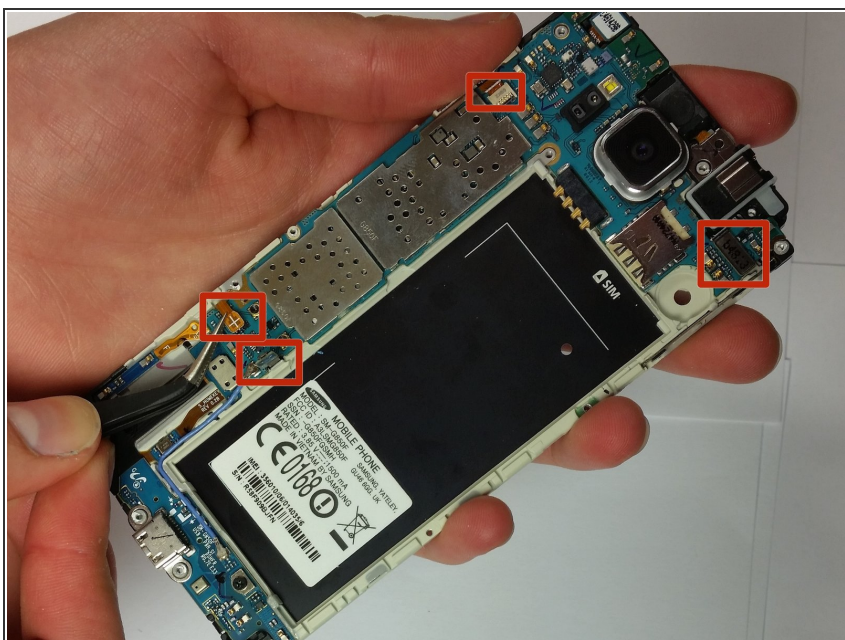
- Find the plastic clips on the side of the battery slot.
 - Using a Plastic Opening Tool, release the clips by pulling up inside the crevasse in the plastic walls and separate the two pieces.
- ⓘ For this step you will want to use two tools. One to pull up and the other to hold the gap open.

Step 10



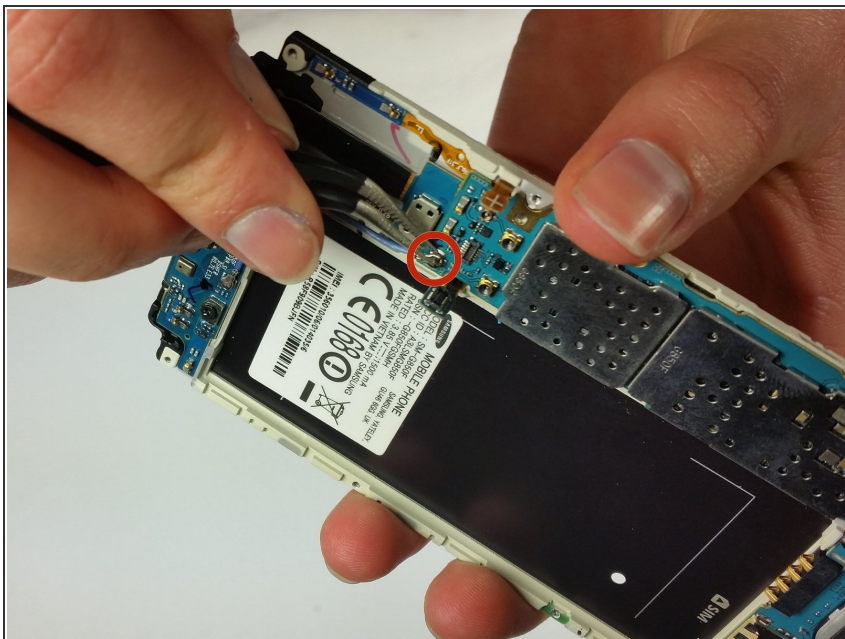
- Using the Phillips #00 screwdriver remove the two 3mm screws.

Step 11



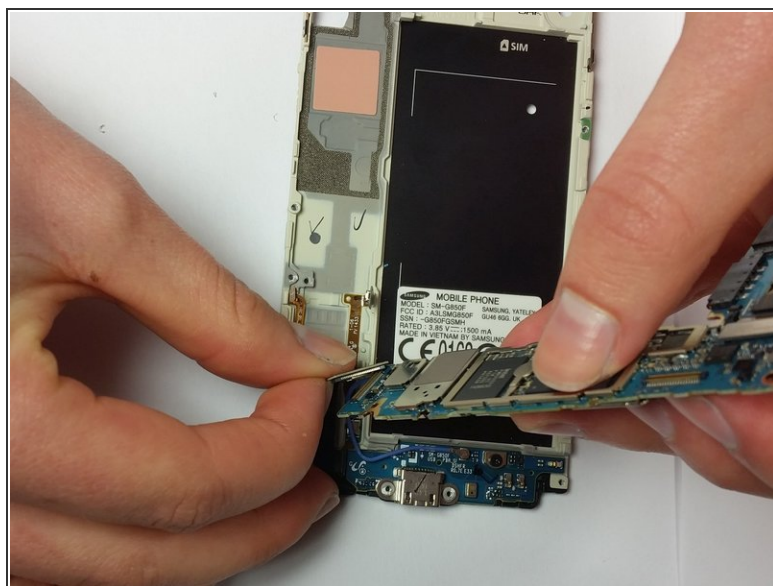
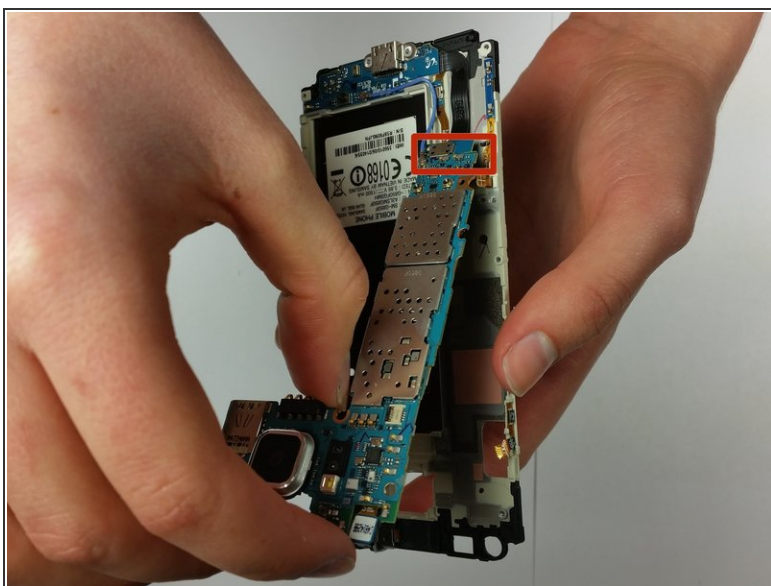
- Using your fingers or a Metal Tweezer, apply slight pressure and pry up each of the four pin connectors shown in the picture.

Step 12



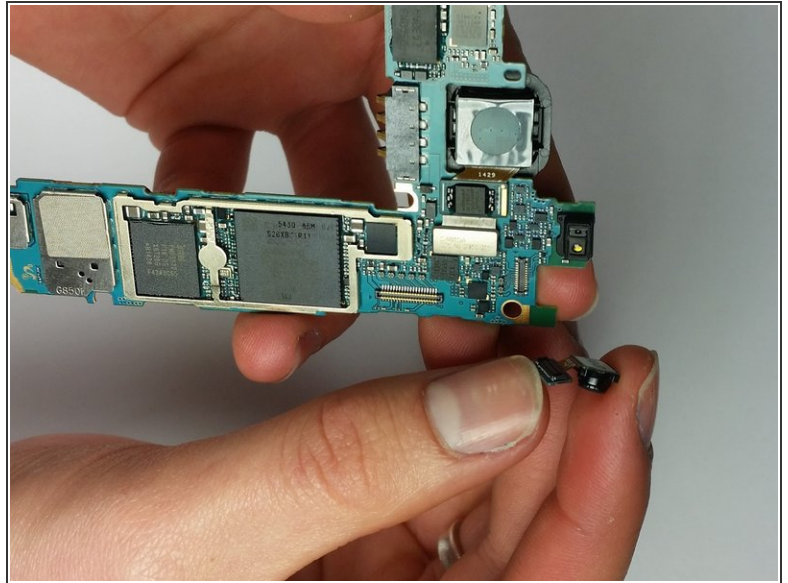
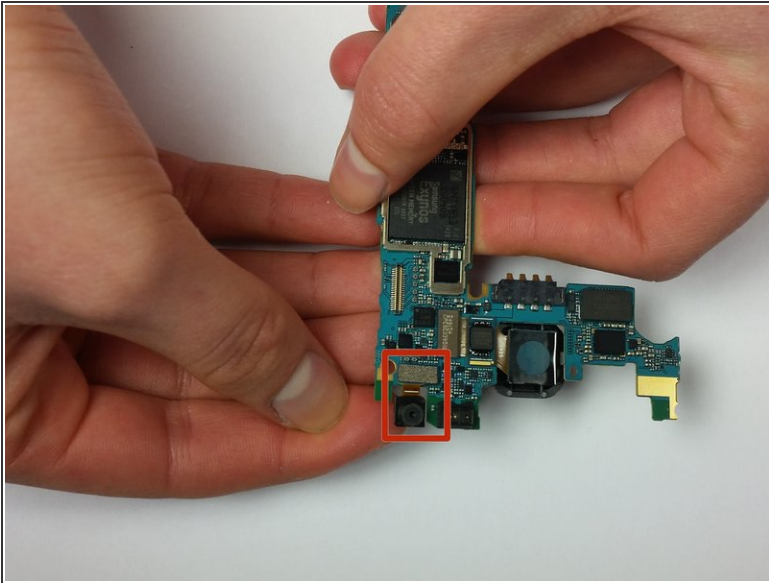
- Finally, remove the last connector that is attached by a blue cable.

Step 13



- Find the end of the blue piece shown in the picture and gently lift the top of the part away from the casing.

Step 14



- Locate the small camera on the upper part of the piece.
- Using a tool or your finger, apply slight pressure to pop the front camera out of place.

To reassemble your device, follow these instructions in reverse order.