



# Samsung Galaxy Alpha Rear Camera Replacement

How to replace the rear camera component on a Samsung Galaxy Alpha.

Written By: Michael Apolaya



---

## INTRODUCTION

This guide details how to replace the rear camera on a Samsung Galaxy Alpha. The rear camera would need replaced if the camera gets cracked, or is not functioning correctly. The phone is very fragile so be cautious when removing the screen and the phone back. These parts are easily bent and broken. By following these instructions and using great care, one can save time and money by replacing one component rather than buying a new phone entirely.



### TOOLS:

- [iFixit Opening Picks set of 6](#) (1)
  - [Phillips #00 Screwdriver](#) (1)
  - [Halberd Spudger](#) (1)
  - [Spudger](#) (1)
-

## Step 1 — Motherboard



- On the back of the phone, find the slot on the side. When looking at the phone upright and from the back, it should be to the left of the camera.
- Use a tool such as an iFixit opening pick to slide into this gap and create vertical separation between the back panel and the body of the phone. This may also be done by hand if no tool is available.

## Step 2



- ⚠ Ensure that the phone is turned off before proceeding.
- Locate the slot near the base of the battery housing.
- Using the iFixit opening pick or your hand, lift the battery upward and outward.

## Step 3



- Using the Phillips #00 screwdriver, remove and set aside the twelve 3.0 mm screws that secure the back case to the main phone body.

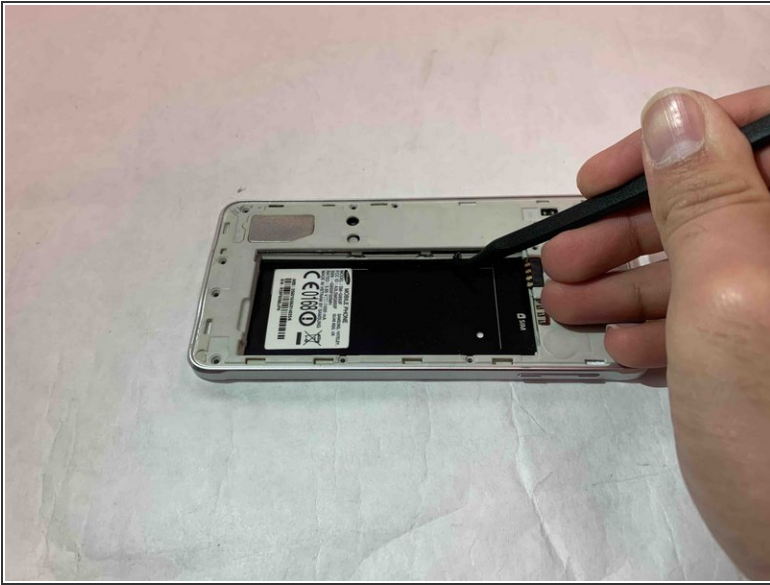


## Step 4



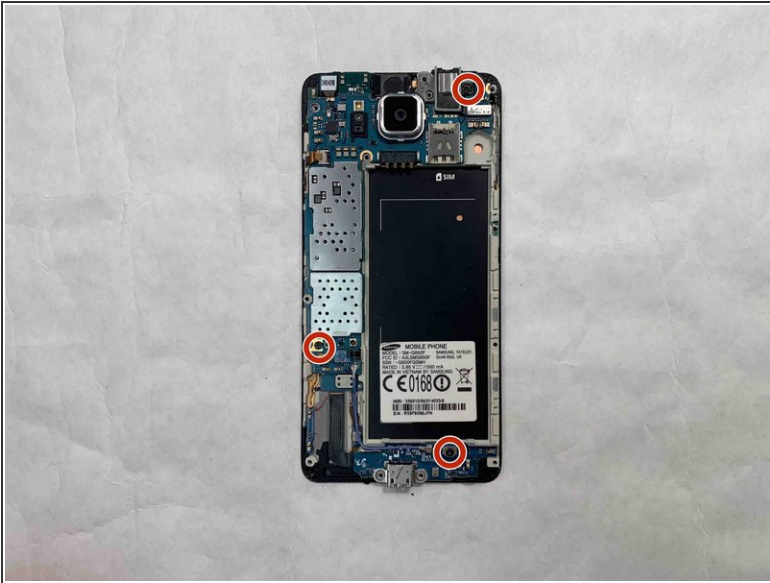
- Flip the phone so that the screen is facing upward.
- Use the flat blade end of the halberd spudger to create separation between the front screen and the body of the phone.
- Lift upward and outward to remove the screen.

## Step 5



- Flip the phone so that the back case is facing upward.
- Insert the hook of the halberd spudger into the gaps on the side of the battery housing. Pry upward until there is separation between the back case and the main phone body.
- Use your fingers or a prying tool to completely separate and remove the back case.

## Step 6



- Using the Phillips #00 screwdriver, remove and set aside the three 3.0 mm screws that secure the motherboard to main phone body.

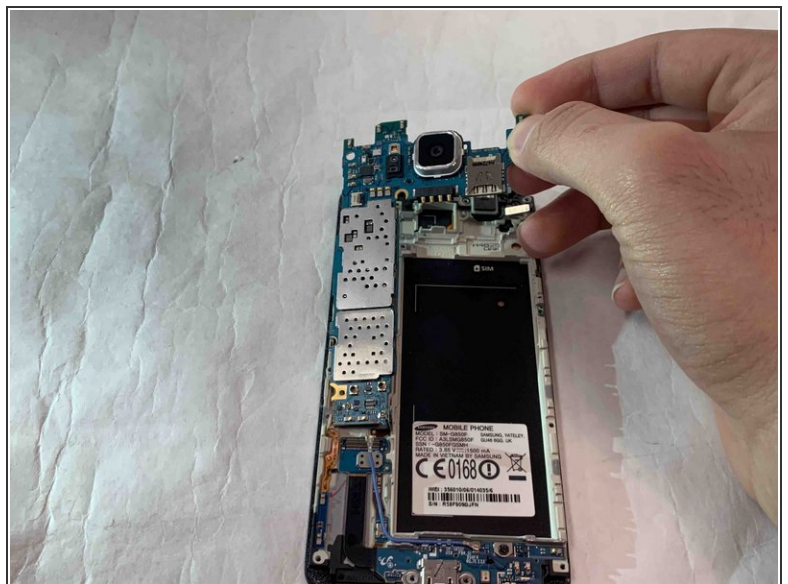


## Step 7



- When removing the screws in the previous step, a pair of pin connector tabs may have come loose. Use the spudger to lift them up the pair and ensure that they are separated from the main phone body.
- Using the spudger, lift the motherboard off the back of the phone case.

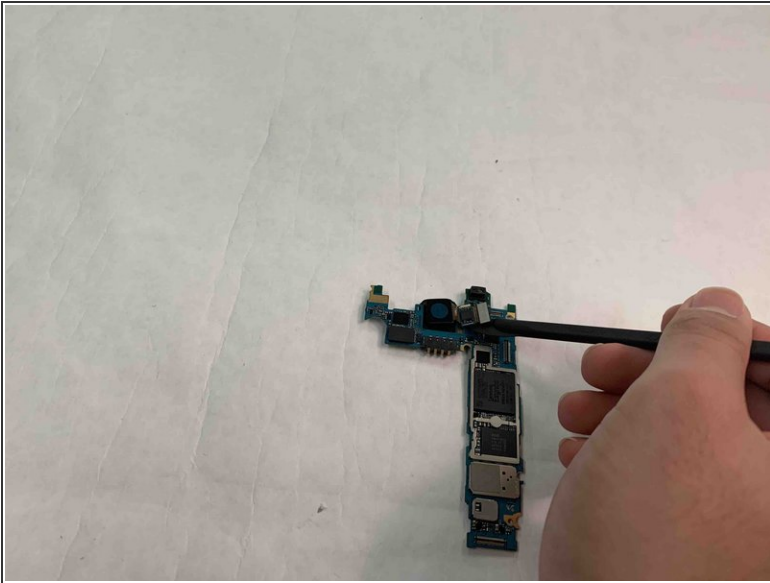
## Step 8



- Using your hands or a spudger, lift up and remove the motherboard.



## Step 9 — Rear Camera



- Once the motherboard is removed, use the spudger to disconnect the rear camera from the motherboard.

To reassemble your device, follow these instructions in reverse order.