



# Samsung Galaxy Attain 4G Front Camera Replacement

Written By: Josh Forester





## TOOLS:

- [iFixit Opening Tools](#) (1)
- [Phillips #00 Screwdriver](#) (1)
- [Spudger](#) (1)

## Step 1 — Placement



- Begin by turn the device over to it's back, with the screen facing down.

## Step 2 — Battery Door Removal



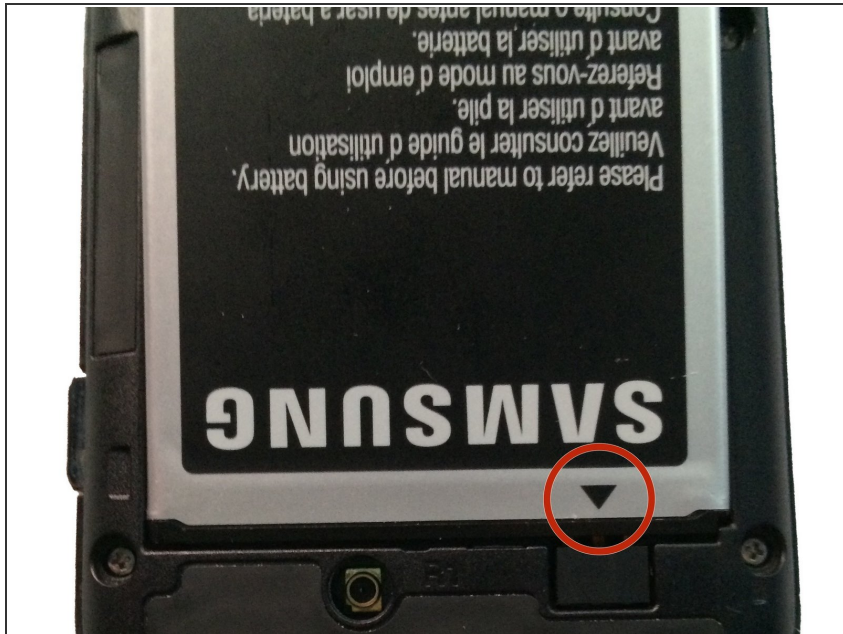
- At the top of the device there is a small notch that is used to remove the battery door.
- Using a pry tool or your fingernail, pry off the battery door from the main housing.

## Step 3 — Battery Removal



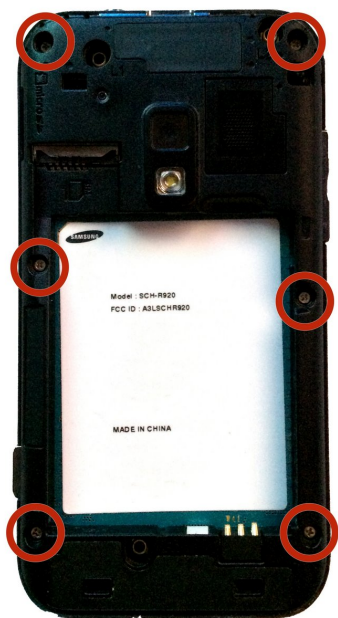
- Place the battery door to the side.
- Using a pry tool or your fingernail, pry the battery up towards you.
- You have now removed the battery!

## Step 4 — Heads Up!



- ☑ Make sure when replacing the battery that the arrow on the bottom is facing down.

## Step 5 — Screw Removal



- Remove the 6 Phillips head screws that hold the rear housing in place.

## Step 6 — Prying



- Using a spudger or plastic pry tool, slowly go around the phone between the display & rear housing to release the clips.



## Step 7 — Remove Housing



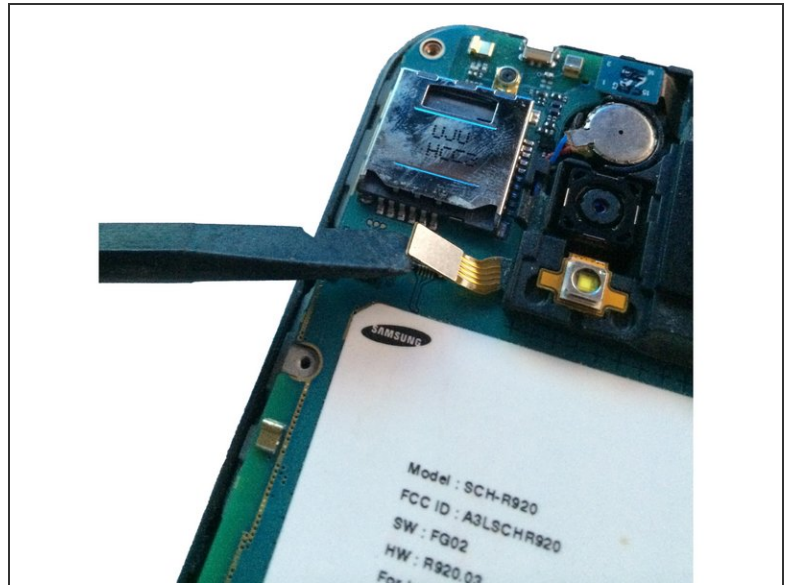
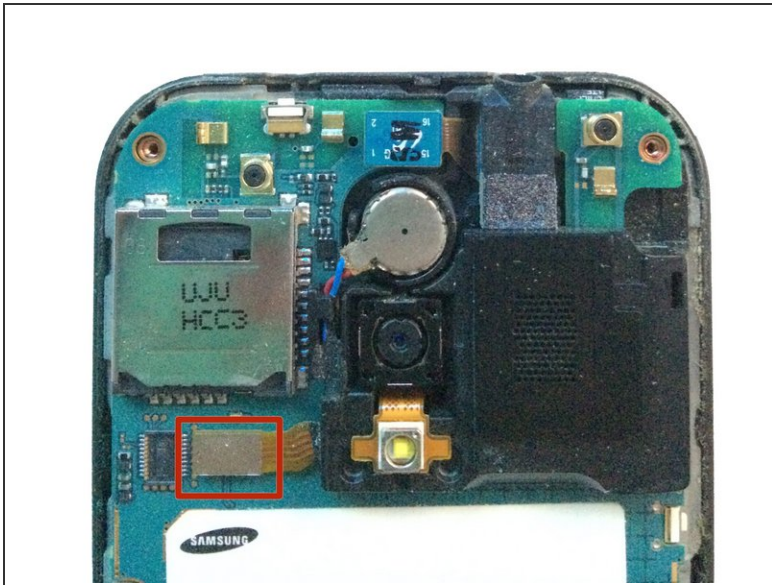
- Lift the rear housing from the display assembly.

## Step 8 — Logic Board



- Using your spudger/plastic pry tool, disconnect the headphone jack flex cable.

## Step 9



- Using your spudger/plastic pry tool, disconnect the rear speaker flex cable.

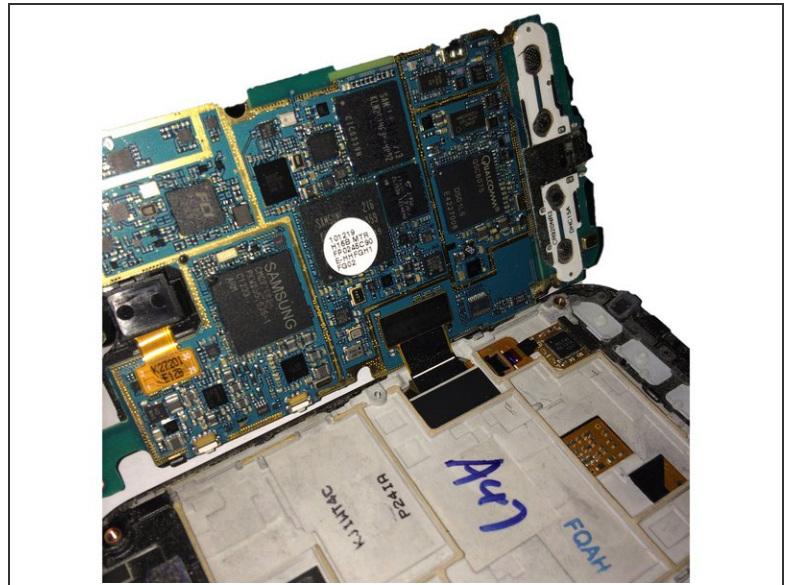
## Step 10



- Using a spudger/pry tool, carefully remove the vibration motor from its housing. This has a mild adhesive on the bottom.



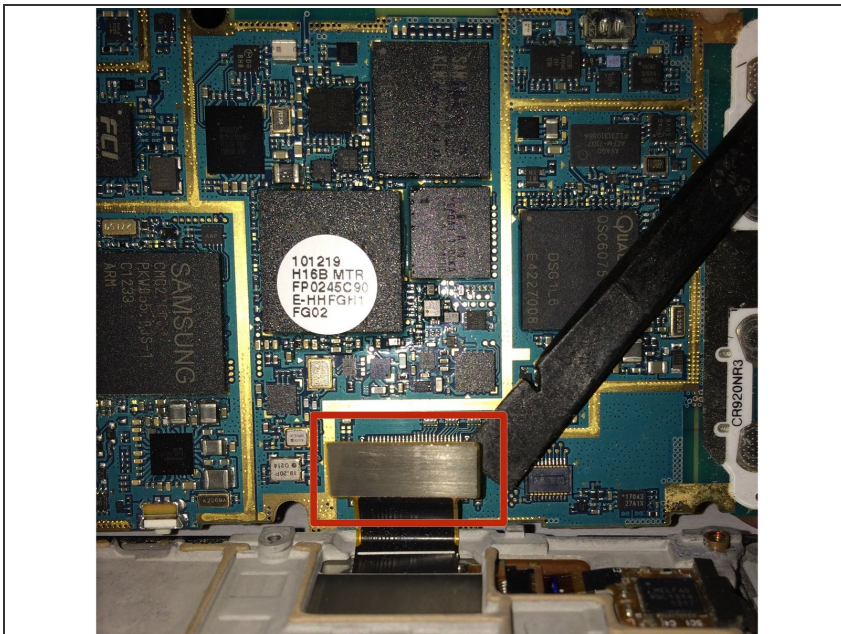
## Step 11



- After removing both flex cables, slowly move the logic board to the left of the screen assembly.

⚠ Do not try and remove the logic board all the way, as you still have to remove the display assembly flex cable!

## Step 12



- Using your spudger/plastic pry tool, disconnect the LCD/Digitizer flex cable.

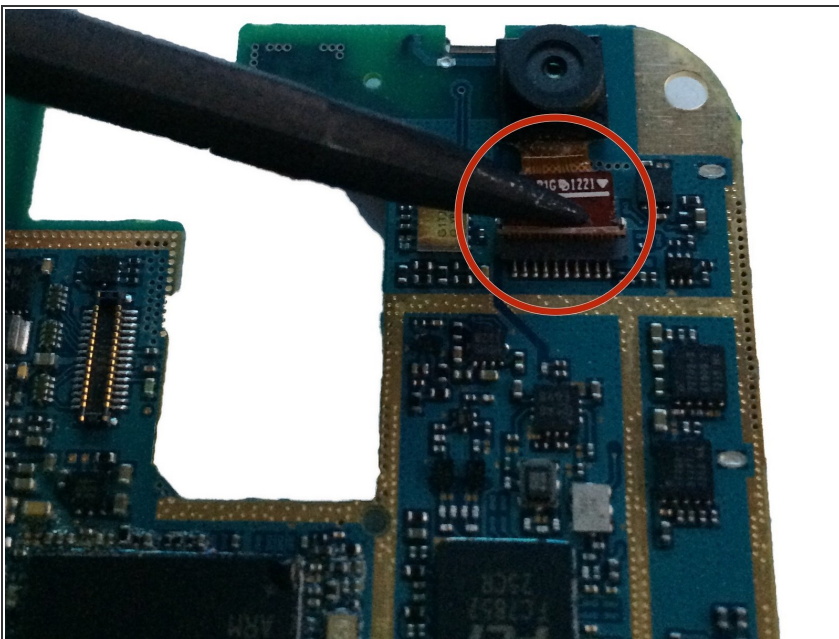


## Step 13



- You have now removed the logic board from the display assembly.

## Step 14 — Front Camera



- Using a spudger/plastic pry tool lift the brown ZIF tab on the front-facing camera connector.
- ⚠ Do not pry at the black part, as this will damage the connector on the board.

## Step 15



- Carefully pull the camera out of it's connector and set to the side.

To reassemble your device, follow these instructions in reverse order.