



Samsung Galaxy Attain 4G Logic Board Replacement

Written By: Josh Forester





TOOLS:

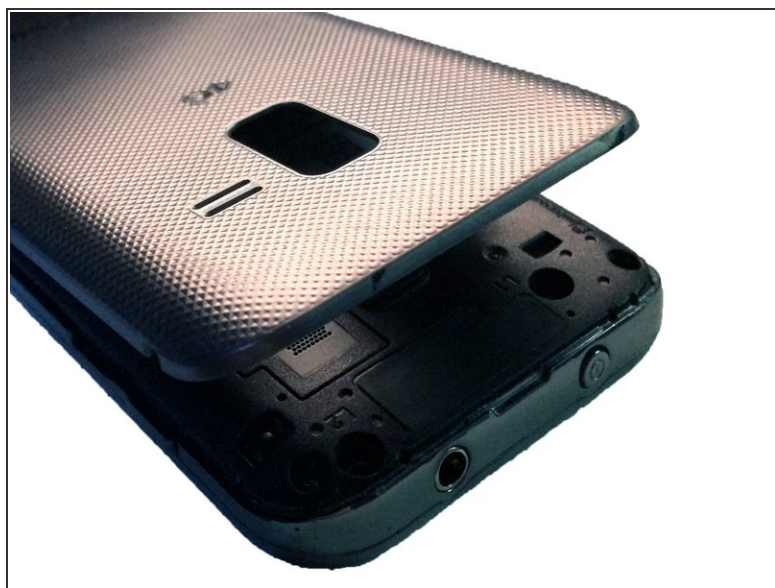
- [iFixit Opening Tools](#) (1)
 - [Phillips #00 Screwdriver](#) (1)
 - [Spudger](#) (1)
-

Step 1 — Placement



- Begin by turn the device over to it's back, with the screen facing down.

Step 2 — Battery Door Removal



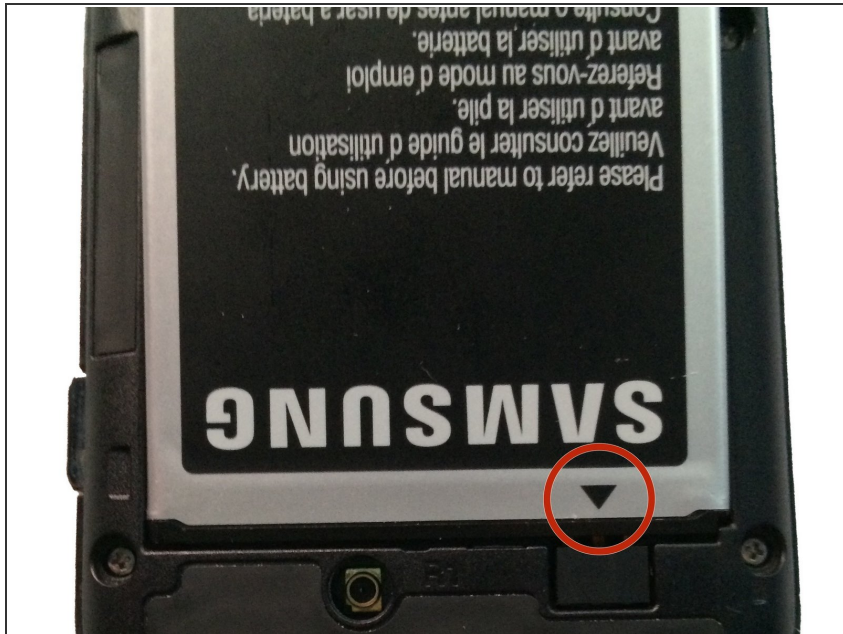
- At the top of the device there is a small notch that is used to remove the battery door.
- Using a pry tool or your fingernail, pry off the battery door from the main housing.

Step 3 — Battery Removal



- Place the battery door to the side.
- Using a pry tool or your fingernail, pry the battery up towards you.
- You have now removed the battery!

Step 4 — Heads Up!



- ☑ Make sure when replacing the battery that the arrow on the bottom is facing down.

Step 5 — Screw Removal



- Remove the 6 Phillips head screws that hold the rear housing in place.

Step 6 — Prying



- Using a spudger or plastic pry tool, slowly go around the phone between the display & rear housing to release the clips.

Step 7 — Remove Housing



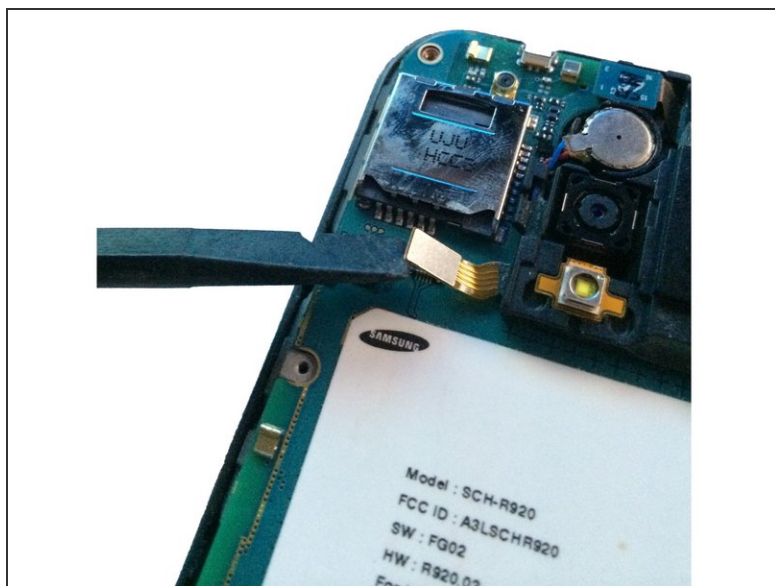
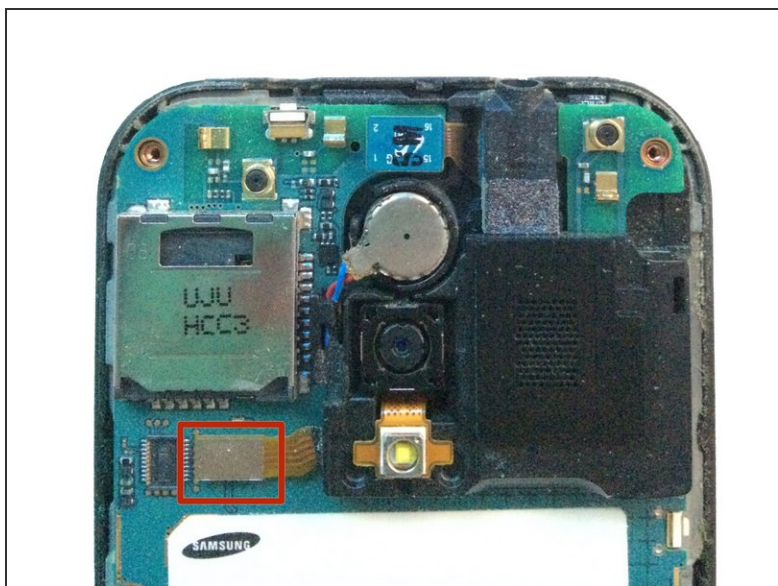
- Lift the rear housing from the display assembly.

Step 8 — Logic Board



- Using your spudger/plastic pry tool, disconnect the headphone jack flex cable.

Step 9



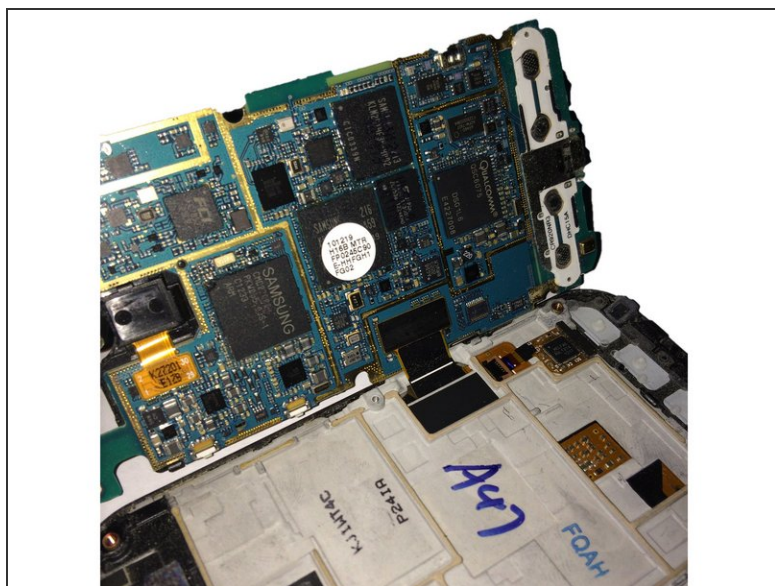
- Using your spudger/plastic pry tool, disconnect the rear speaker flex cable.

Step 10



- Using a spudger/pry tool, carefully remove the vibration motor from its housing. This has a mild adhesive on the bottom.

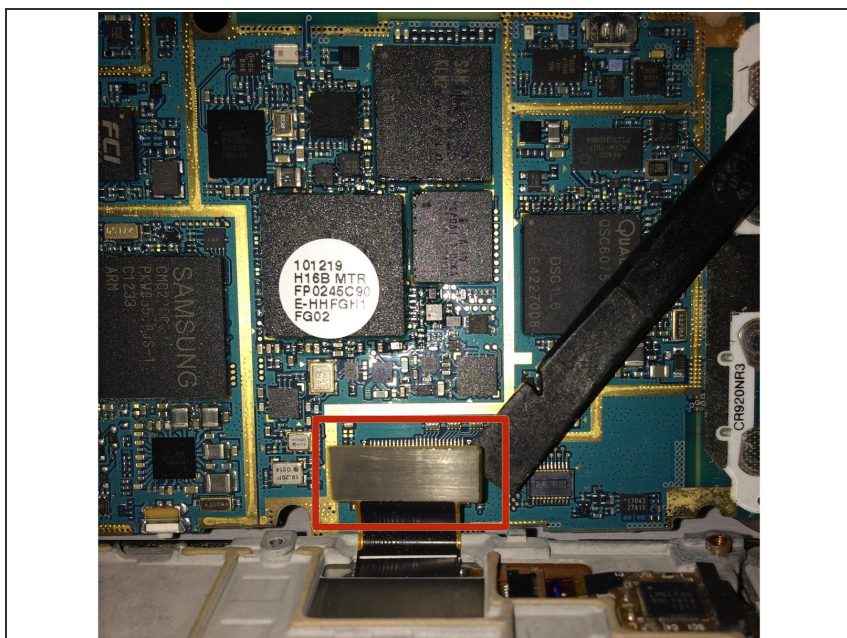
Step 11



- After removing both flex cables, slowly move the logic board to the left of the screen assembly.

⚠ Do not try and remove the logic board all the way, as you still have to remove the display assembly flex cable!

Step 12



- Using your spudger/plastic pry tool, disconnect the LCD/Digitizer flex cable.

Step 13



- You have now removed the logic board from the display assembly.

To reassemble your device, follow these instructions in reverse order.