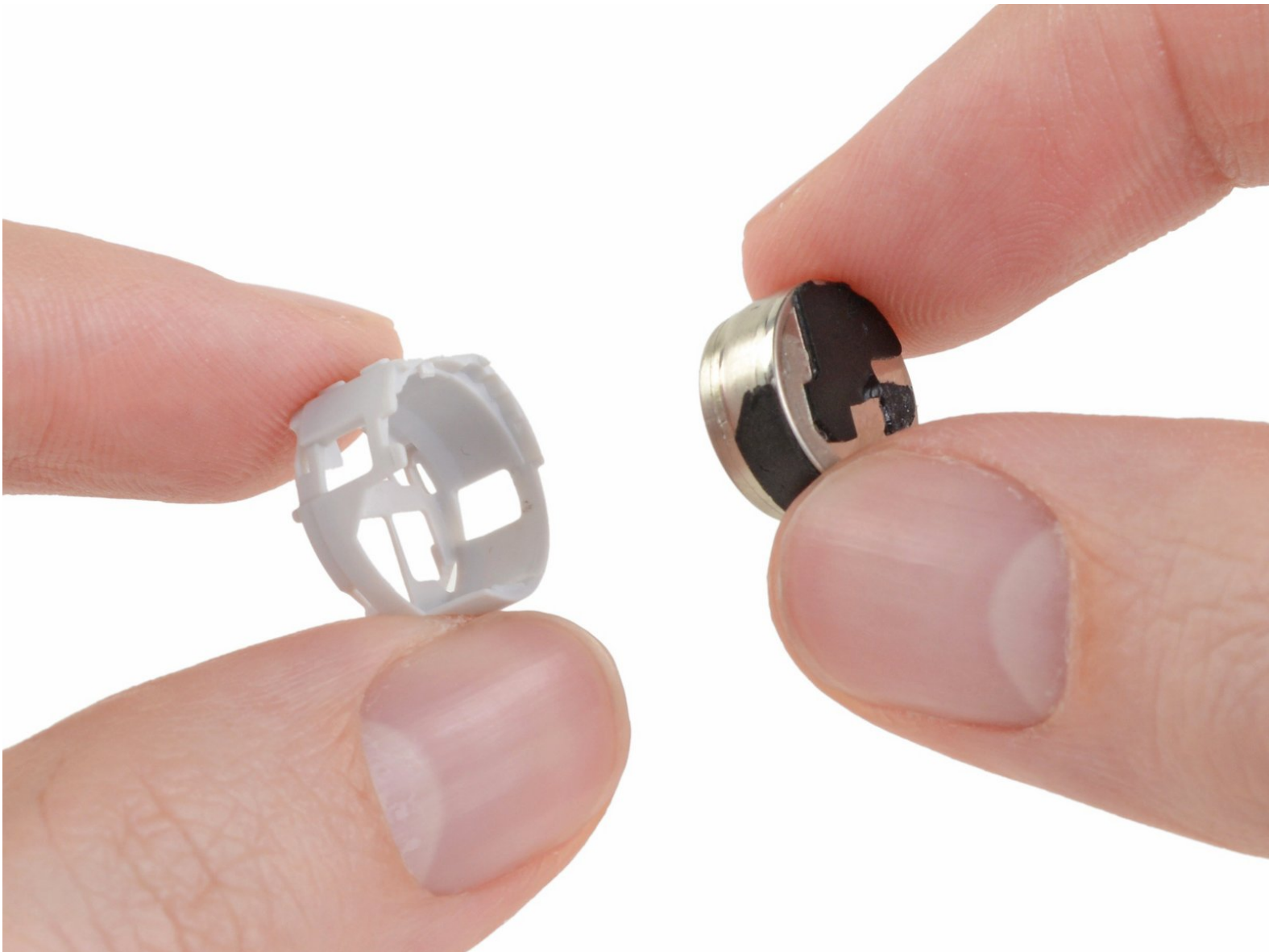




# Samsung Galaxy Buds Battery Replacement

This guide will show you how to replace the battery in your Samsung Galaxy Buds.

Written By: Nick Galardi



## INTRODUCTION

Follow these steps to replace the battery in one of your Samsung Galaxy Buds earbuds. The photos for this guide were taken with the right earbud, but the procedure is the same for both buds.

Galaxy Buds are rated IPX2 for ingress-resistance, meaning they are splash resistant. After this repair, they will be less splash-resistant, so sweat carefully!



### TOOLS:

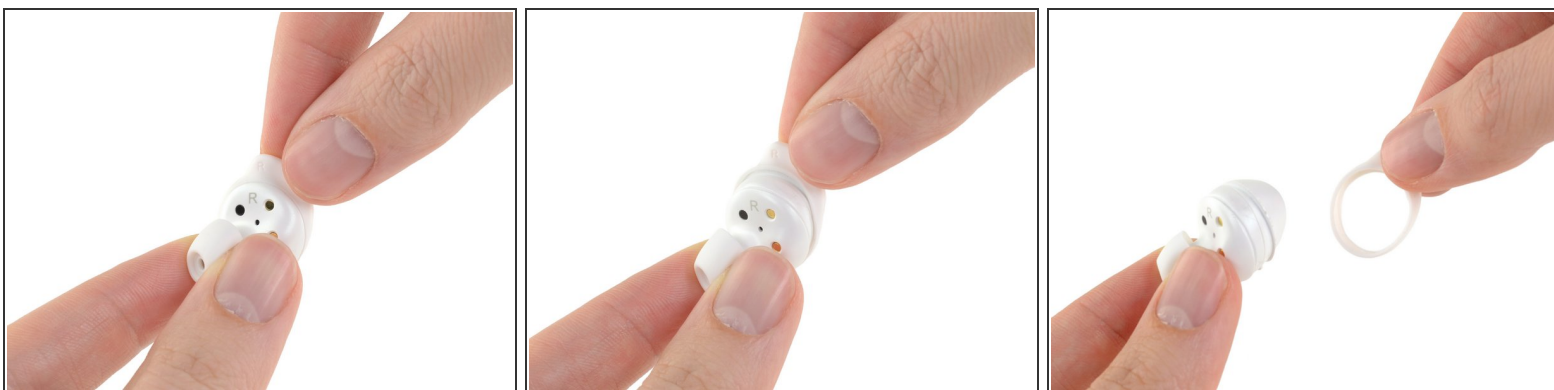
- [Spudger](#) (1)
- [iFixit Opening Tools](#) (1)
- [Vise](#) (1)
- [Large Needle Nose Pliers](#) (1)



### PARTS:

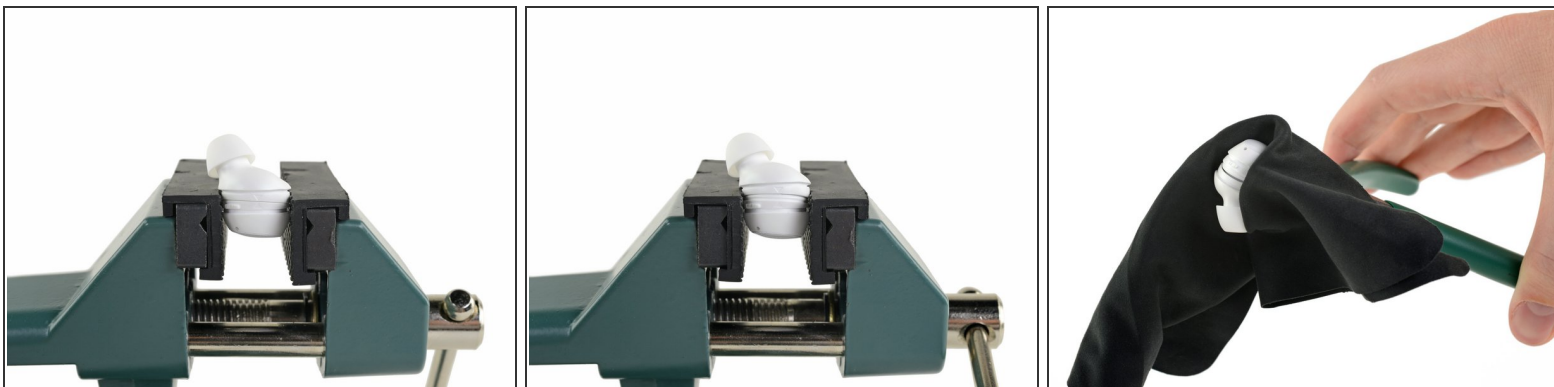
- [Samsung Galaxy Buds Replacement Batteries](#) (1)
- [Tesa 61395 Tape](#) (1)

## Step 1 — Battery



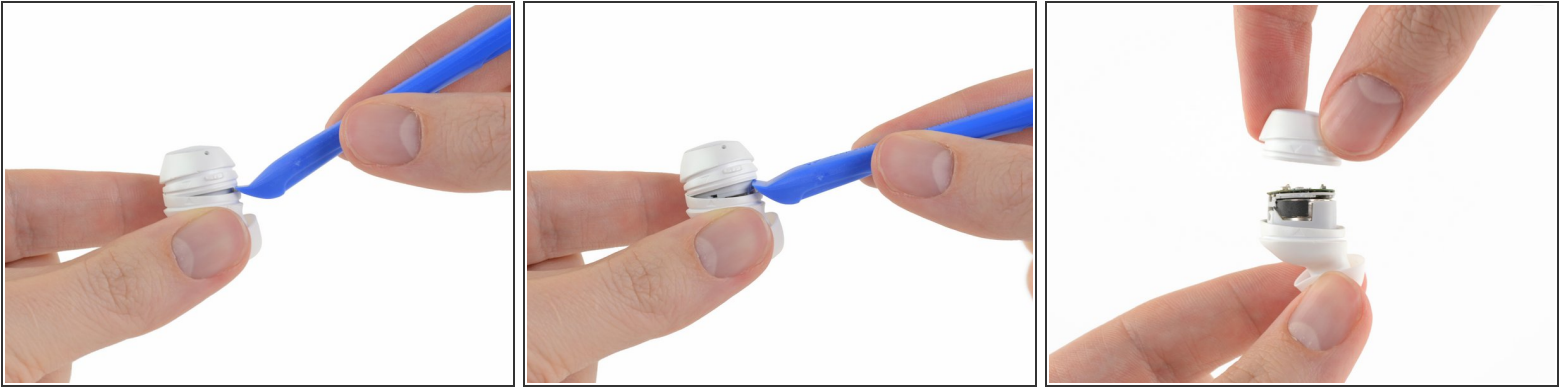
- ❗ If possible, drain the battery in your Galaxy Buds before performing a battery replacement.
- Begin by taking off the earbud's rubber wingtip:
  - Grab the tip (where the "R" label is) and gently pull upward on it while slipping it off the bud.

## Step 2 — Opening up the earbud





- Place the bud horizontally into a rubber-guarded vice or a pair of blunt pliers.
- Apply steady, even pressure to either side of the bud along the main housing seam ( [the seam between the two arrows](#)). The pressure should break the seal.
- ❗ **Only apply enough pressure to create a small gap between the two halves of the bud.** If you use pliers, put a cloth between the pliers and the buds to prevent the teeth from digging into the soft plastic.

### Step 3

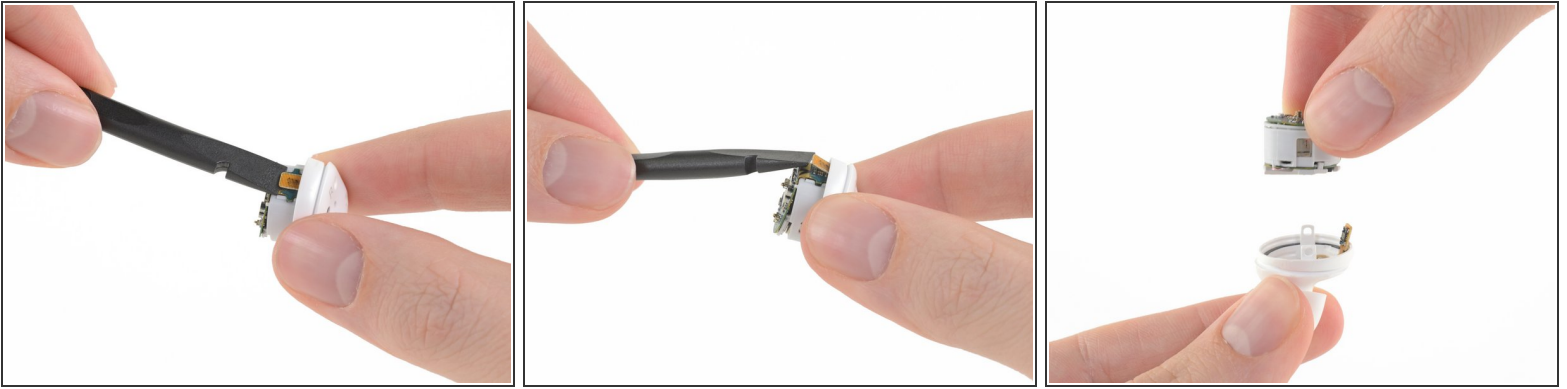


- Once you have created a gap between the two halves of the bud, gently pry them apart with a plastic opening tool.
- You may need to work your way around the entire earbud with the opening tool. Take your time and do your best not to deform the plastic.
- Carefully remove the top half of the bud.

 **Be careful when pulling the halves apart!** Sometimes the battery assembly gets caught in the case. If the top half of your case doesn't come out cleanly, skip this step and disconnect the cable in step 4 before separating the two halves of the bud.

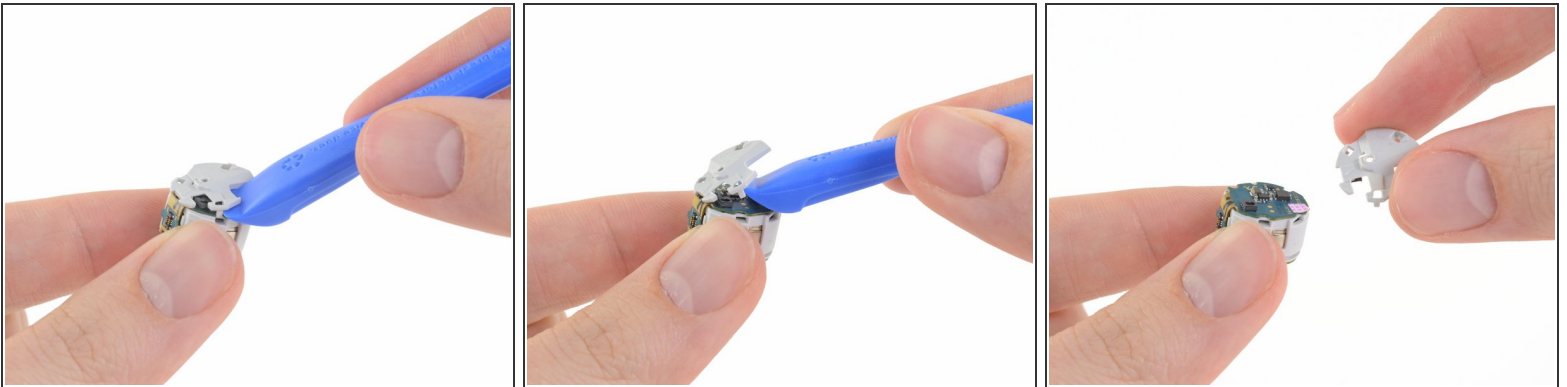
-  During reassembly, [line up the arrows on the two halves of the outer case](#), then press the halves together until they snap into place.

## Step 4



- Use a spudger to lift up and disconnect the press connector connecting the battery/board assembly to the speaker drivers and the other sensors in the case.
  - Once the cable is disconnected, remove the assembly from the bud.
- ☑ During reassembly, slide battery/board assembly into the earbud so that [the peg from the outer case fits into the notch in the battery housing](#). Then reattach the connector to reconnect the assembly.

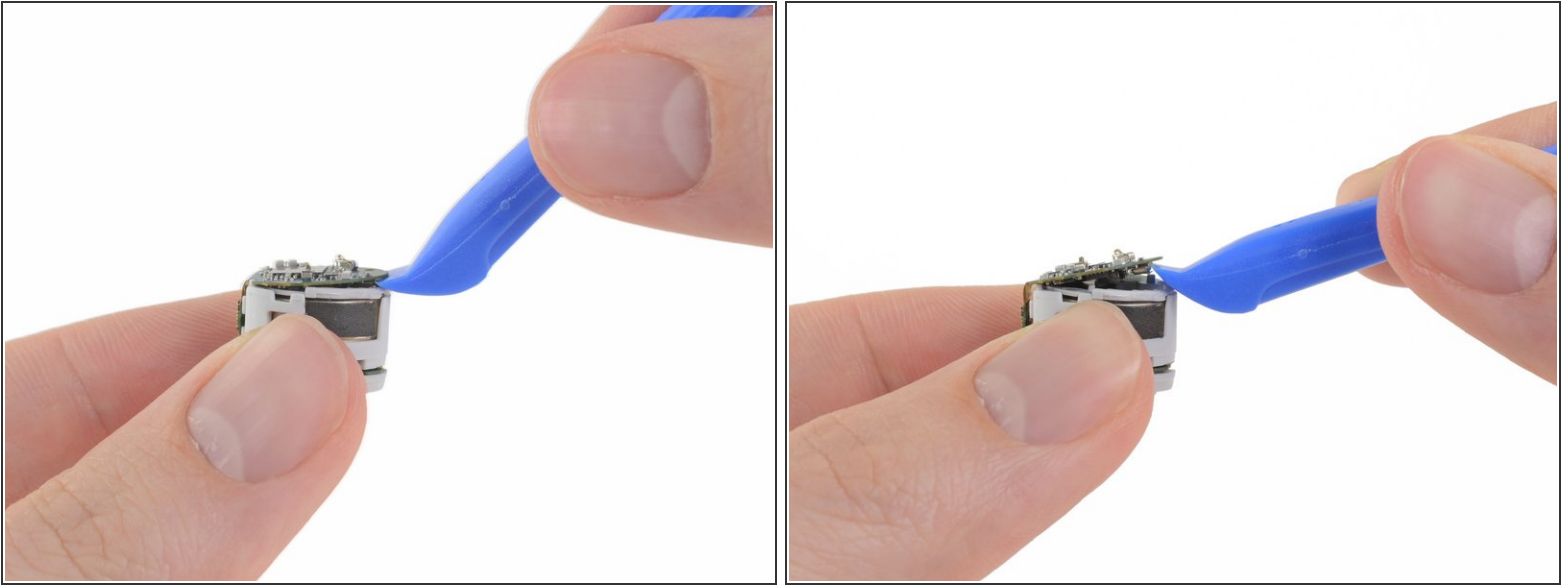
## Step 5




- i** **The remaining components are held together with clips and light adhesive.** Work carefully, stay organized, and don't tug on anything too hard.
- Pry up and remove the plastic cap from the bottom of the battery/board assembly.

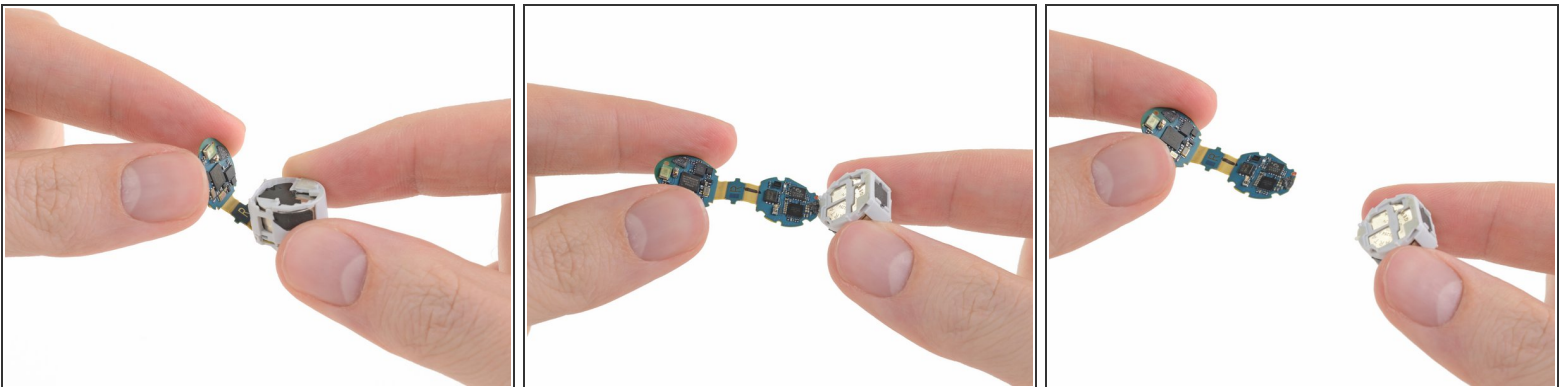



## Step 6



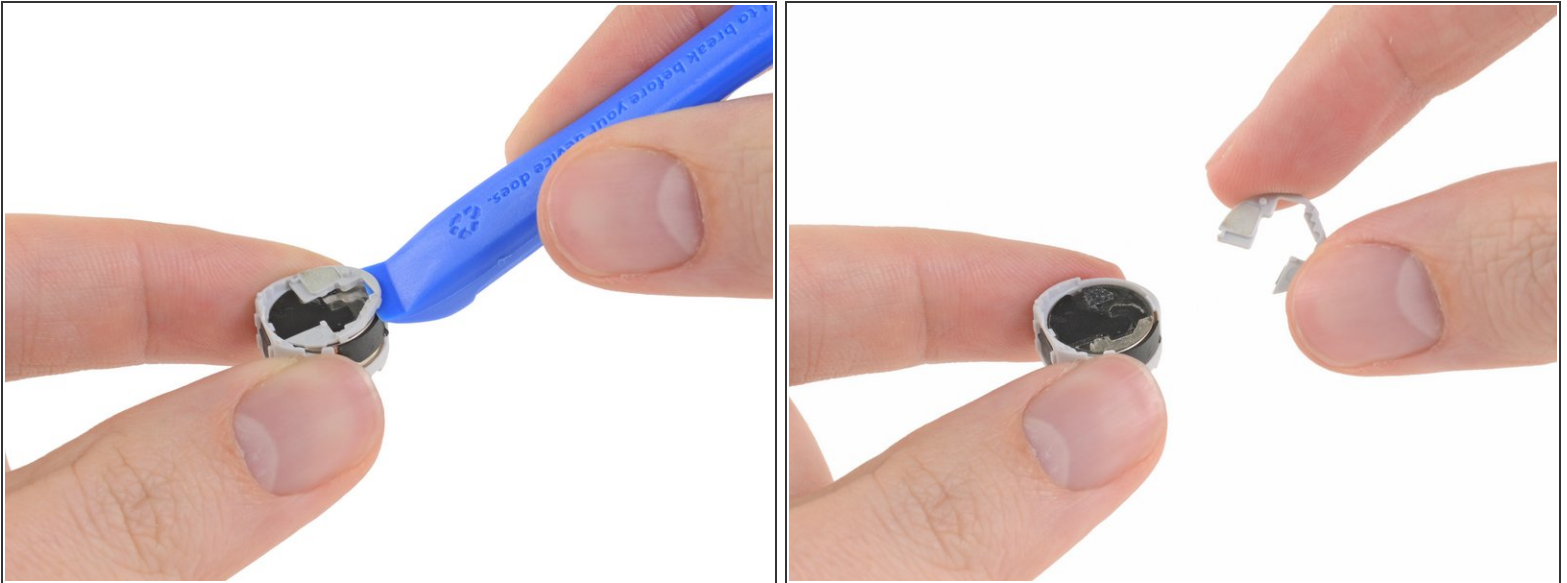
-  The motherboard consists of two boards wrapped around the battery housing, connected by a flex cable.
- Use an opening tool to gently pry up one of the boards along its edge, away from the flex cable.

## Step 7



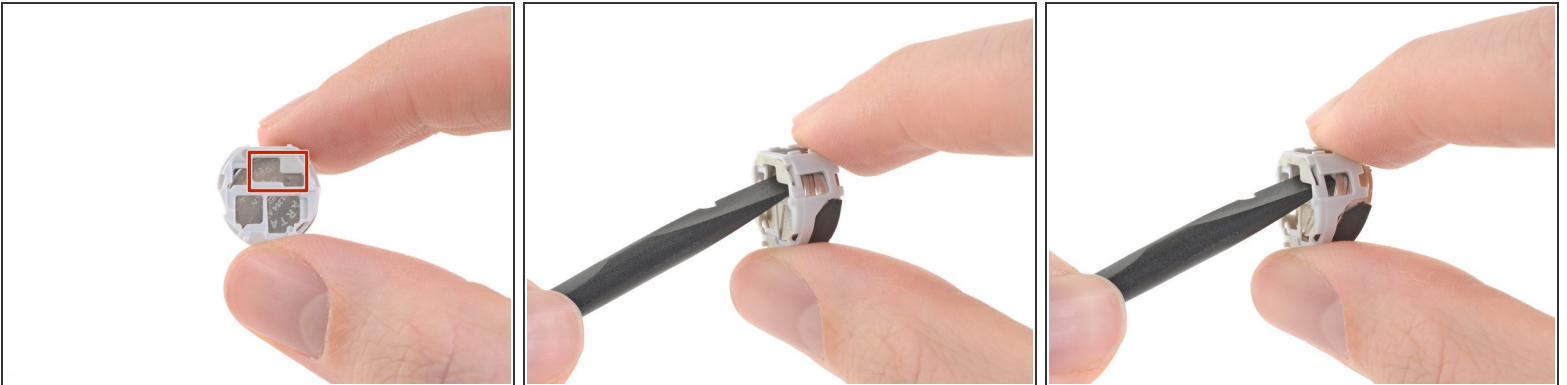
- Carefully unwrap and remove the motherboard from the battery housing.
-  During reassembly, make sure the pegs on the battery assembly [align with the notches in the motherboard](#) to ensure a proper fit.

## Step 8



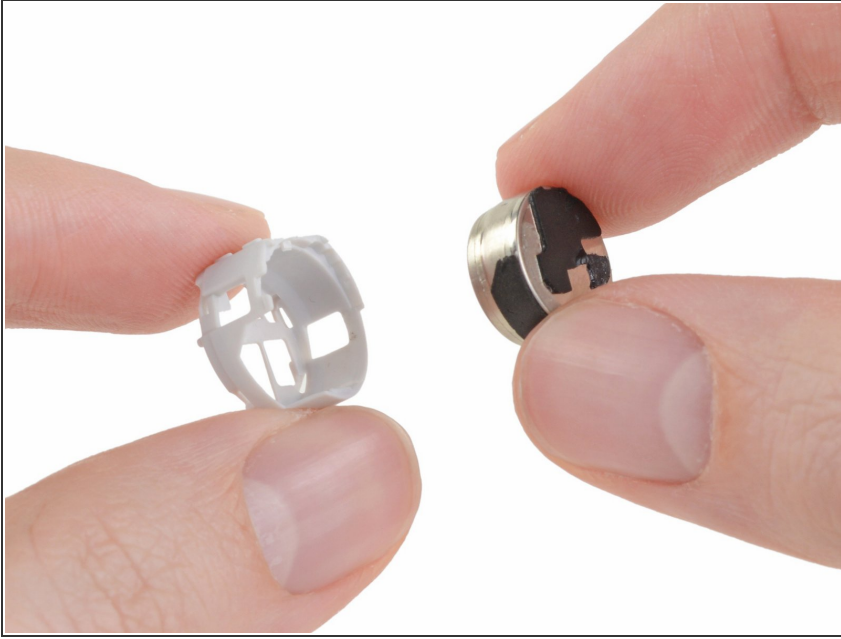
- Use a plastic opening tool to pry up and remove the crescent-shaped cap on the top side of the battery housing.

## Step 9 — Removing the battery



- The bottom of the battery housing has holes, which allow you to push the battery out. The flat side of a spudger fits perfectly through the widest opening, marked here in red.
- Insert the flat end of a spudger (or another **plastic** prying tool) into the bottom of the battery housing and push the battery out the other side.

## Step 10



- Remove the battery from the battery housing.
- ★ If possible, transfer the foam strips from the original Galaxy Buds battery to your new one. The foam helps to prevent contact between the battery and other bits inside the bud, and also keeps the battery from moving around inside the housing.

**To reassemble your device, follow the above steps in reverse order.** Use Tesa tape to re-adhere parts that won't re-adhere with the residual original adhesive.

For optimal performance, calibrate your newly installed battery: Charge it to 100% and keep charging it for at least 2 more hours. Then use your device until it shuts off due to low battery. Finally, charge it uninterrupted back to 100%.

Take your e-waste to an [R2 or e-Stewards certified recycler](#).

Repair didn't go as planned? Check out our Galaxy Buds [Answers community](#) for troubleshooting help.