



Samsung Galaxy Camera Lens and Motherboard Replacement

This guide will show how to replace the lens and motherboard as one part.

Written By: Richard Hicks





TOOLS:

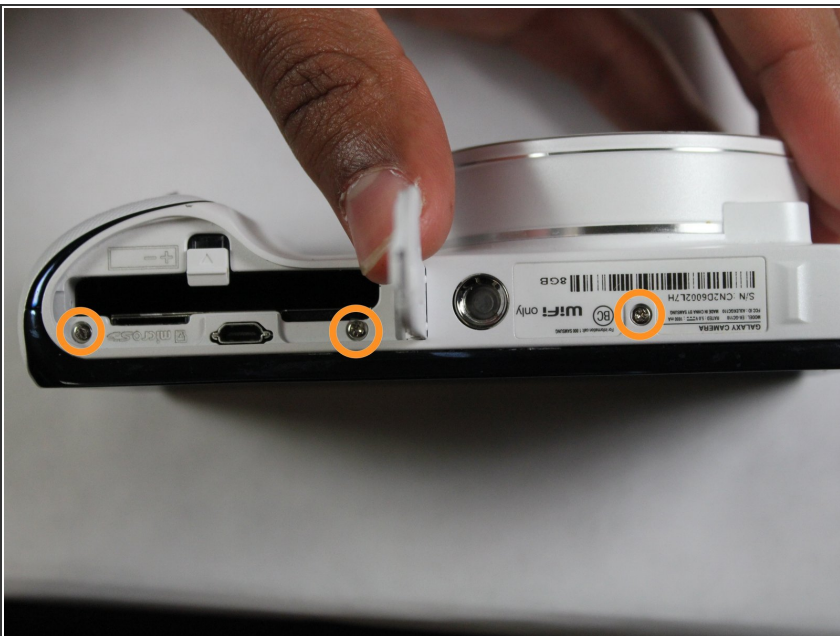
- [Phillips #0 Screwdriver](#) (1)
 - [iFixit Opening Tools](#) (1)
-

Step 1 — Screen



- Begin removing the 3/16" screws for the device.

Step 2



- Turn the device and remove the additional 3/16" screws.

Step 3



- Turn the device and remove the additional 3/16" screw.

Step 4



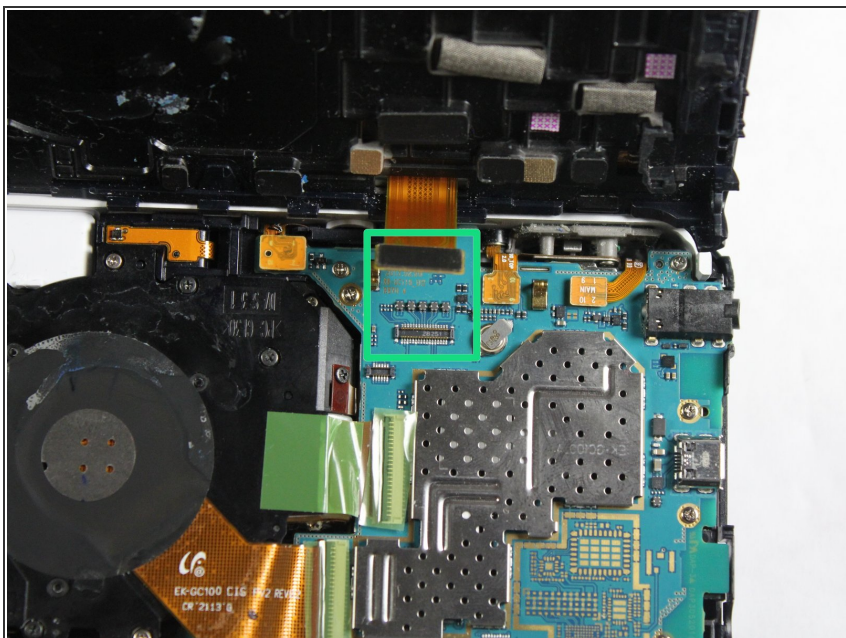
- Take the white cover plate off.

Step 5



- Using the plastic opening tools, pry open the camera from the bottom.
- ⓘ This may require a moderate use of force because of the sealing glue.

Step 6



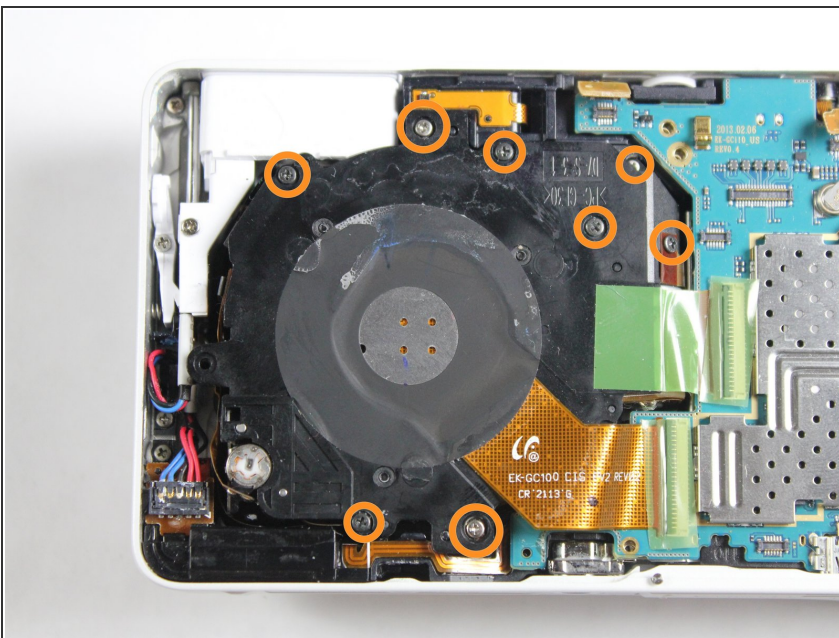
- Gently pull the connector away from the motherboard.

Step 7 — Lens and Motherboard



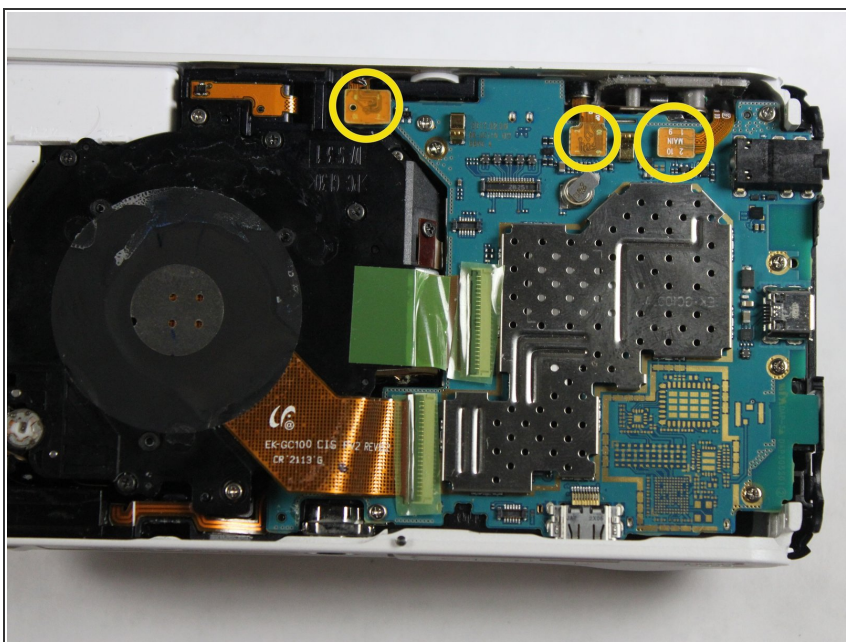
- Unscrew the motherboard's screws. There are 4 3/32" screws and 3 5/32" screws.

Step 8



- Unscrew the lens' screws. There are 1 black 4/32" screw, 3 3/16" black screws, and 2 white 5/32" screws.

Step 9



- Pull these connectors away from motherboard.

Step 10



- Lift the motherboard and lens out of the case.

To reassemble your device, follow these instructions in reverse order.