



Samsung Galaxy Core Prime Battery Replacement

With this guide users will be able to replace their dead/faulty Samsung Galaxy Core Prime battery.

Written By: Olivia Jensen



INTRODUCTION

Many Samsung Galaxy Core Prime users face problems with their battery. You will be able to replace your battery using this guide. You will only need a new battery to complete this guide.

Step 1 — Battery



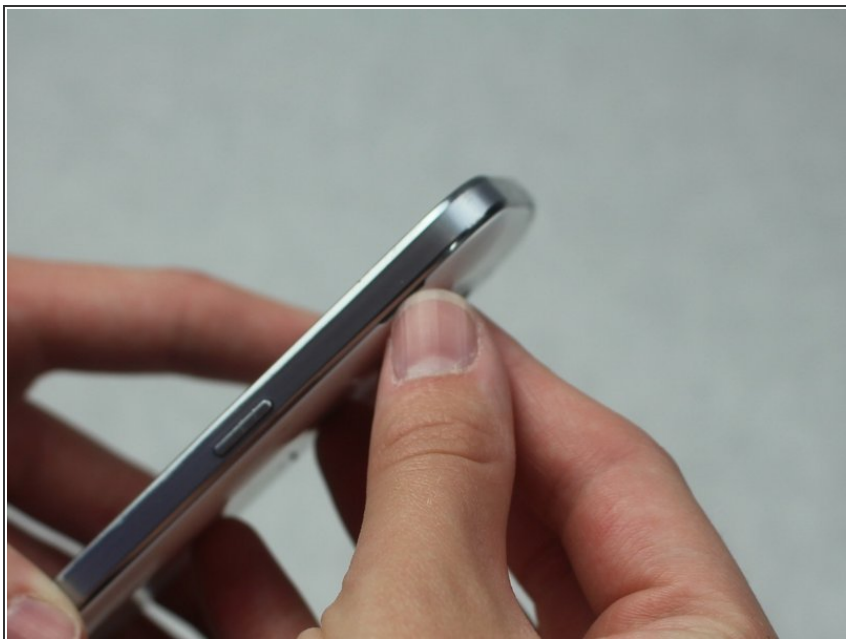
- Turn the smartphone off by using the power button on the right-hand side.

Step 2



- Turn the smartphone over so that the rear camera is face up.

Step 3



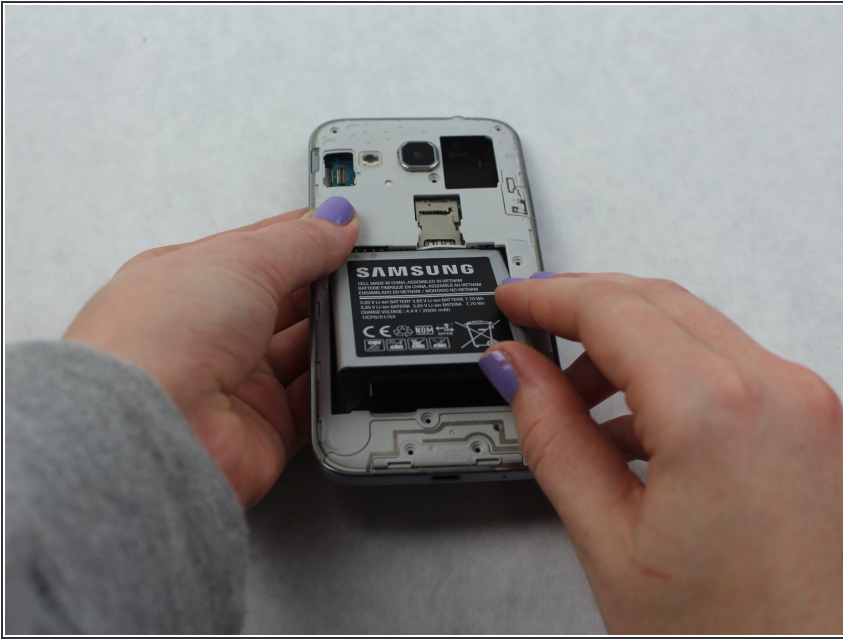
- Use your fingernail or a flat tool to lift the back cover.

Step 4



- Locate the battery near the bottom of the phone. The battery is square, flat, and is labeled 'SAMSUNG'.

Step 5



- Use your fingernail or a flat tool to lift the battery out.

To reassemble your device, follow these instructions in reverse order.