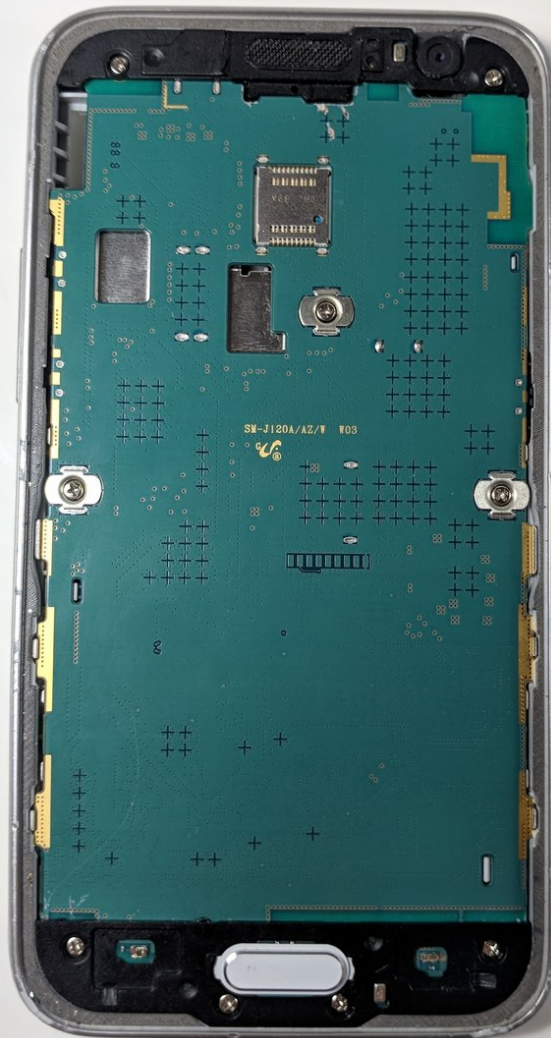




# Samsung Galaxy Express 3 Motherboard Replacement

How to replace the entire motherboard.

Written By: Mack Johnson



## INTRODUCTION

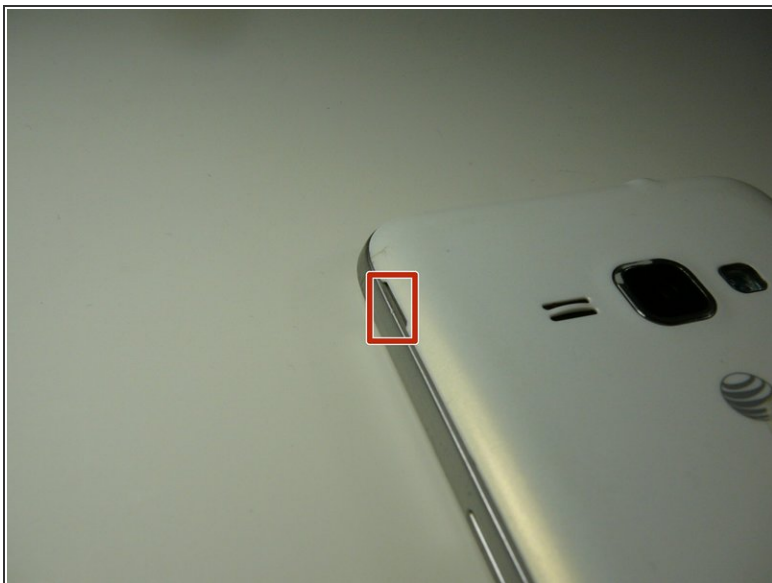
Are you having any kind of software problems that can not be fixed digitally? Replacing the motherboard should do the trick.

---

### TOOLS:

- [Spudger](#) (1)
  - [Hair Dryer](#) (1)
  - [Heat Pad](#) (1)
  - [iFixit Opening Picks set of 6](#) (1)
  - [iFixit Opening Tools](#) (1)
  - [Phillips #0 Screwdriver](#) (1)
-

## Step 1 — Battery



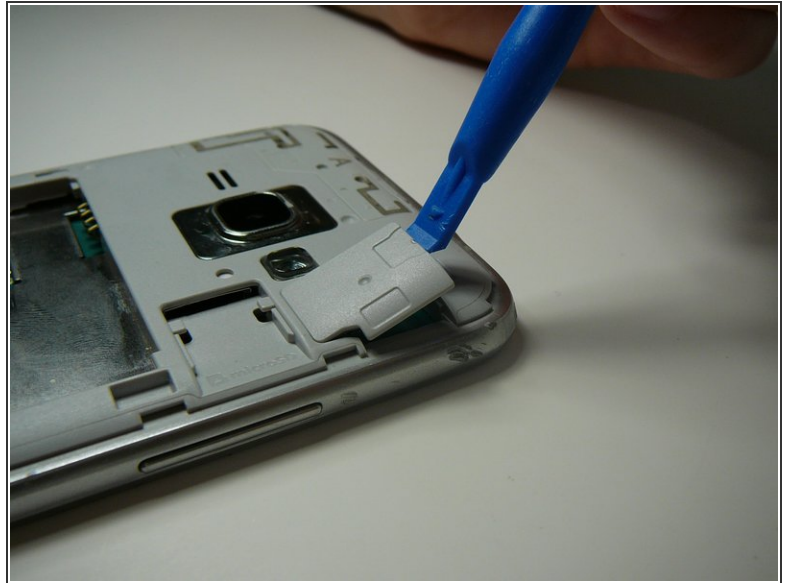
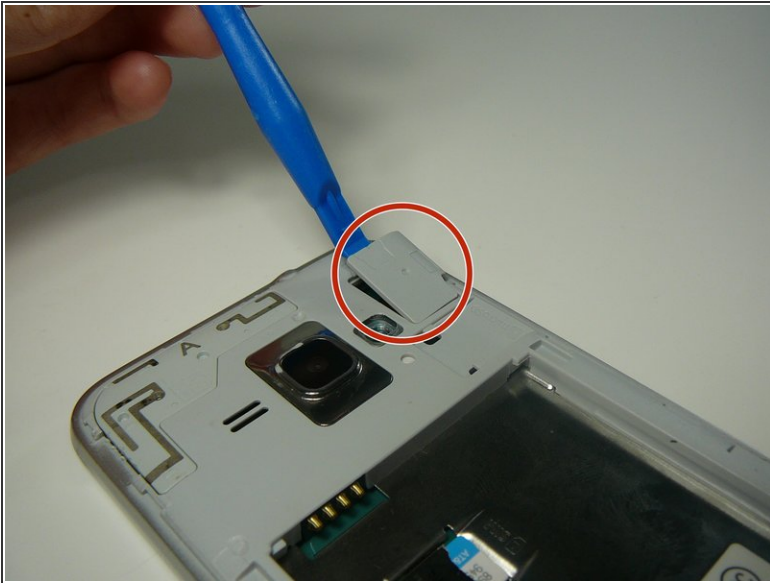
- Starting from the indent, use a finger nail or guitar pick to separate the back from the body of the phone.

## Step 2



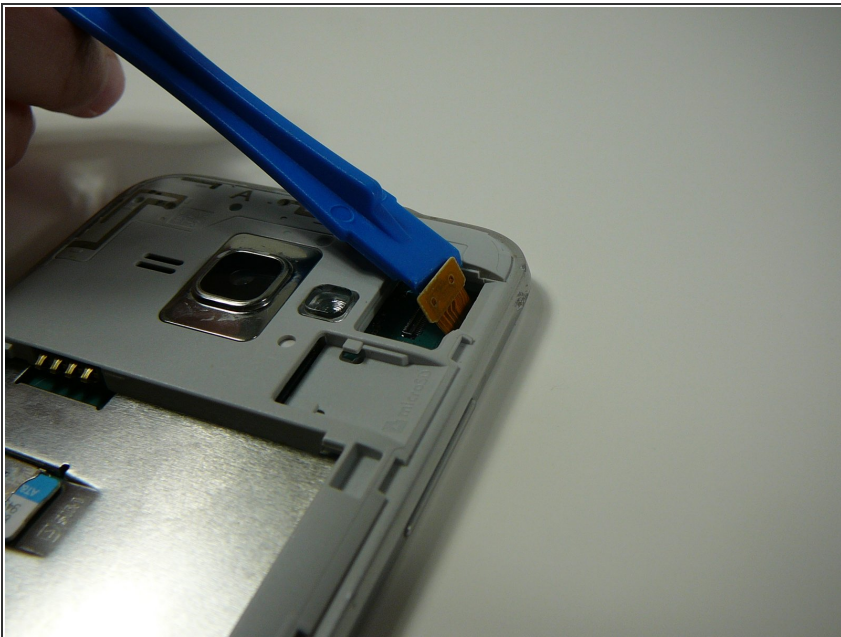
- Once the cover is removed you'll find the battery that reads "SAMSUNG"
- Use a fingernail or a plastic tool such as a guitar pick to lift up on the bottom indent of the battery.
- ⚠ Do not use metal tool as it can be dangerous.

### Step 3 — Screen



- Use a plastic tool to pop out piece shown.

### Step 4



- Detach the screen connector.



## Step 5



- Use a blower dryer or heating pad to heat up the screen.

⚠ If this step is skipped it may result in a broken screen and/or LCD.

ⓘ This is done to loosen the glue holding the screen in place.

## Step 6

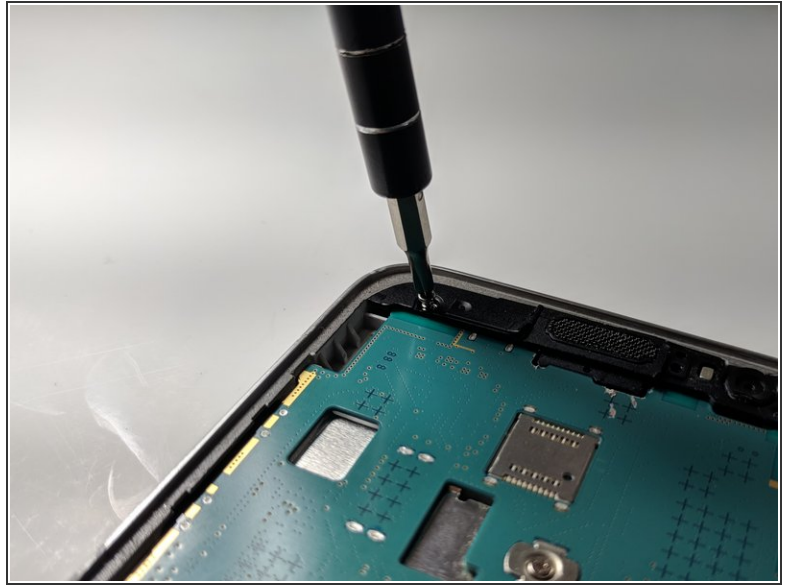


- Use a thin plastic tool such as a guitar pick or plastic prying tool to lift out the glass digitizer and LCD screen around the edges.

ⓘ Do this slowly and carefully as both parts can crack very easily.

⚠ Make sure your tool is plastic as a metal tool can damage the screen.

## Step 7 — Motherboard



- Remove the nine screws with a Phillips #0 screwdriver.

**i** All nine screws are the same size.

**!** Do not lose screws as new the new motherboard does not come with any.

## Step 8



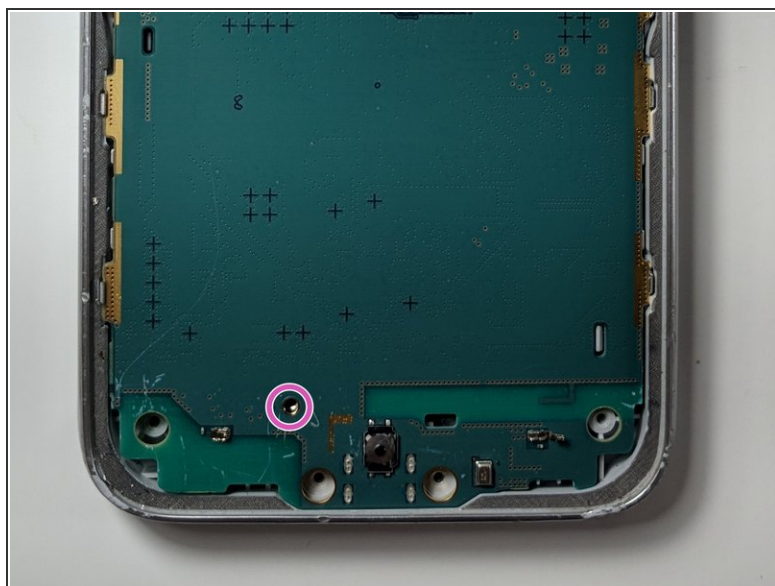
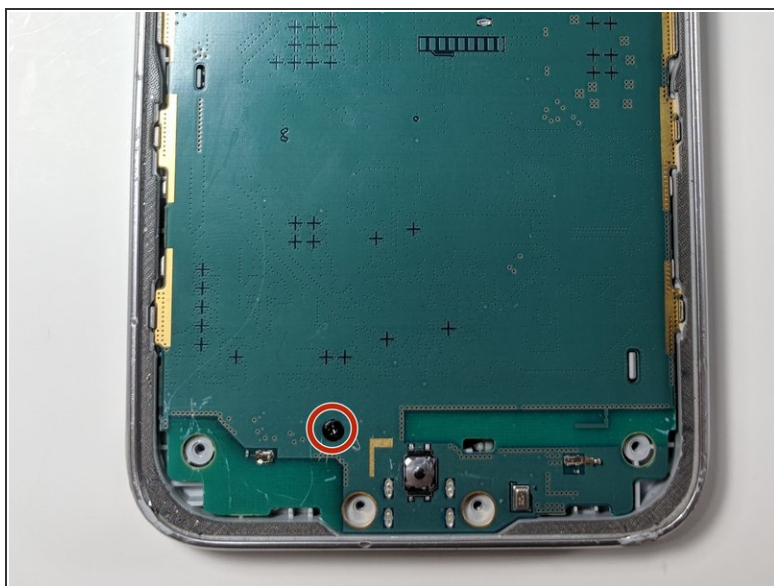
- Using a sharp plastic tool such as a guitar pick or prying tool to pop up and remove the black, plastic pieces on the top and bottom.

⚠ Do not use a metal tool as it can be dangerous to you or the motherboard.

⚠ Use caution when removing the top black piece as it is tight in the phone and can be easily broken.



## Step 9



- Remove the one black screw located below the bottom plastic piece.

⚠ This is the only screw of this size so keep it separate.

## Step 10



- Use a plastic prying tool or spudger to slowly lift up the mother board and remove it from the plastic frame.
- ⓘ If the board seems to be restrained from coming out too heavily in one area, this means that you did not remove one or more screws.



To reassemble your device, follow these instructions in reverse order.