



Samsung Galaxy Express 3 Rear Camera Lens Replacement

How to remove the rear camera lens.

Written By: Mack Johnson



INTRODUCTION

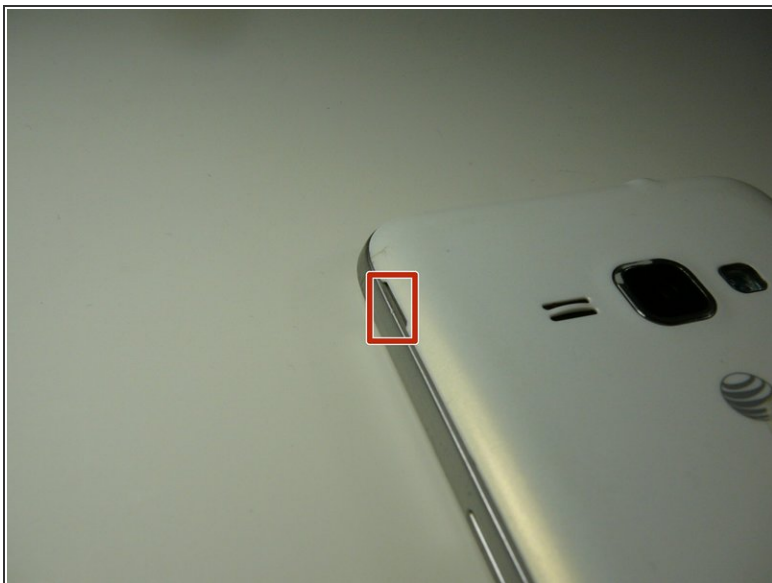
Are your pictures showing up blurry or fuzzy? Simply follow this guide to replace the camera lens.



TOOLS:

- [Metal Spudger](#) (1)
 - [iFixit Opening Tools](#) (1)
-

Step 1 — Battery



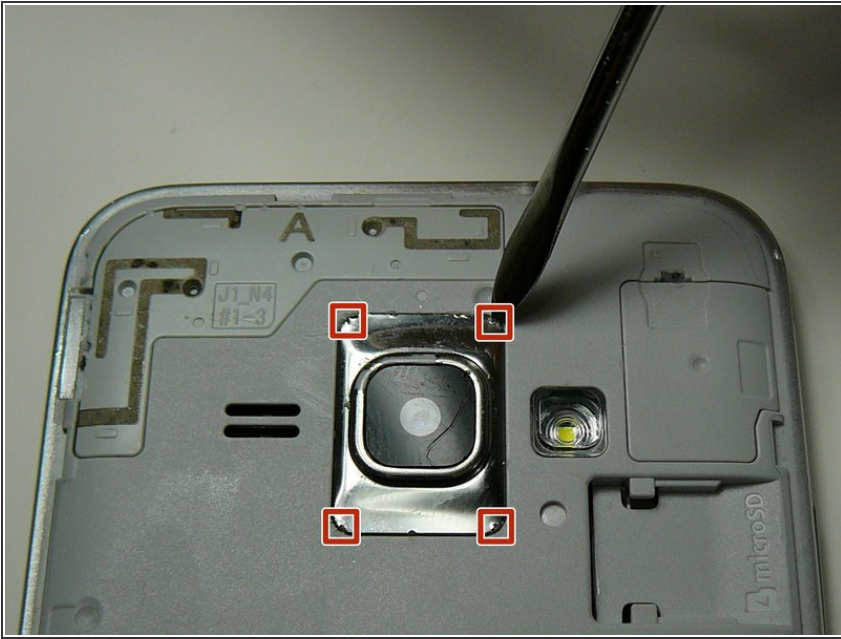
- Starting from the indent, use a finger nail or guitar pick to separate the back from the body of the phone.

Step 2



- Once the cover is removed you'll find the battery that reads "SAMSUNG"
 - Use a fingernail or a plastic tool such as a guitar pick to lift up on the bottom indent of the battery.
- ⚠ Do not use metal tool as it can be dangerous.

Step 3 — Rear Camera Lens



- Carefully push a small pointed tool such as a plastic opening tool (or metal spudger if needed) underneath the camera lens in a corner.
 - Pry up each corner of the lens.
- ⚠ Be careful, especially if using the metal spudger, as if you push too hard it can cause damage to the device or yourself.

Step 4



- Slide your tool underneath one corner to the other to release the lens.

⚠ Make sure not to insert your tool too far as it can damage the camera.

ⓘ When putting the new lens in make sure not to put too much force on it as it can break again.

To reassemble your device, follow these instructions in reverse order.