



# Samsung Galaxy Fame S6812i LCD Screen Replacement

We are going to go through the steps of how to successfully replace a damaged LCD screen.

Written By: Sarah Brueck





## TOOLS:

- [iFixit Opening Tools](#) (1)
-

## Step 1 — Remove the battery cover



- Make sure that the phone is turned off. Then use your thumb nail or a plastic spudger to pry open the back cover.

## Step 2 — Remove the battery



- Use your thumb nail or the plastic opening tool to lift the battery out of the device.

### Step 3 — Removing the screws



- Remove the five 4 mm screws with a Phillips#00 screwdriver
- ⓘ Note: One of the five screws is hidden under a sticker on the bottom left corner of the device.



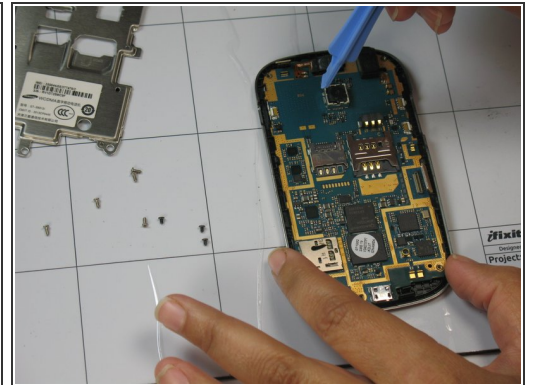
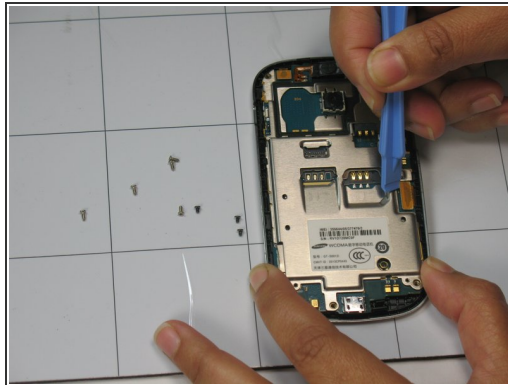
## Step 4 — Removing the mid-frame



- Use the plastic opening tool to pry into the bezel to separate the mid-frame from the device

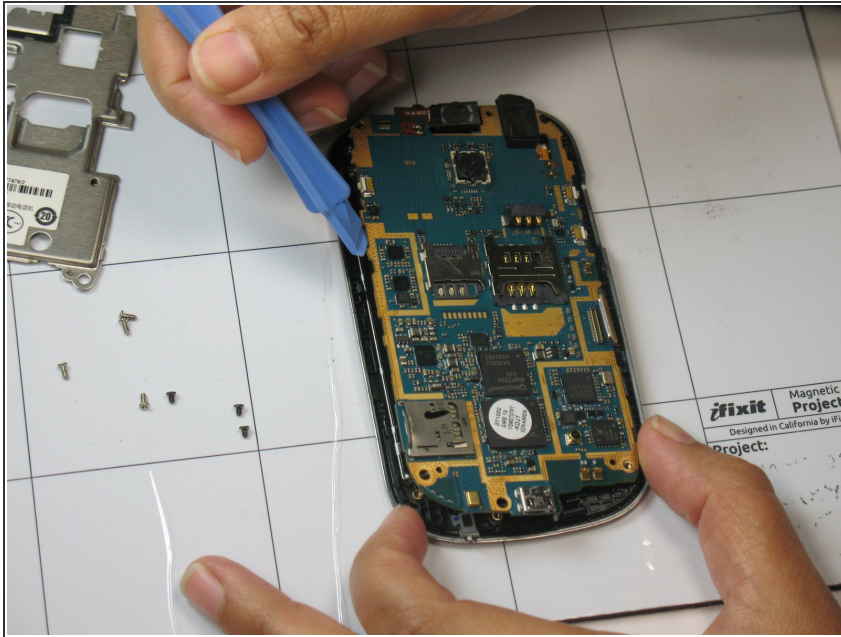
⚠ Be gentle; the plastic mounting clips are very fragile. Take extra care when working around the volume button.

## Step 5 — Removing the internal cover



- Use the Phillips#00 screwdriver to remove the five black screws.
- Use the plastic opening tool to lift the two ribbons.
- Remove the metal internal cover to expose the motherboard.

## Step 6 — Remove the motherboard



- Use the plastic opening tool to lift the motherboard out of the device.

## Step 7 — Remove and replace the LCD screen



- Once you have removed the motherboard you will have access to the LCD screen.
- Use the plastic opening tool to remove the damaged LCD screen from the display assembly.
- Put the new LCD screen in place and reassemble the device.

To reassemble your device, follow these instructions in reverse order.