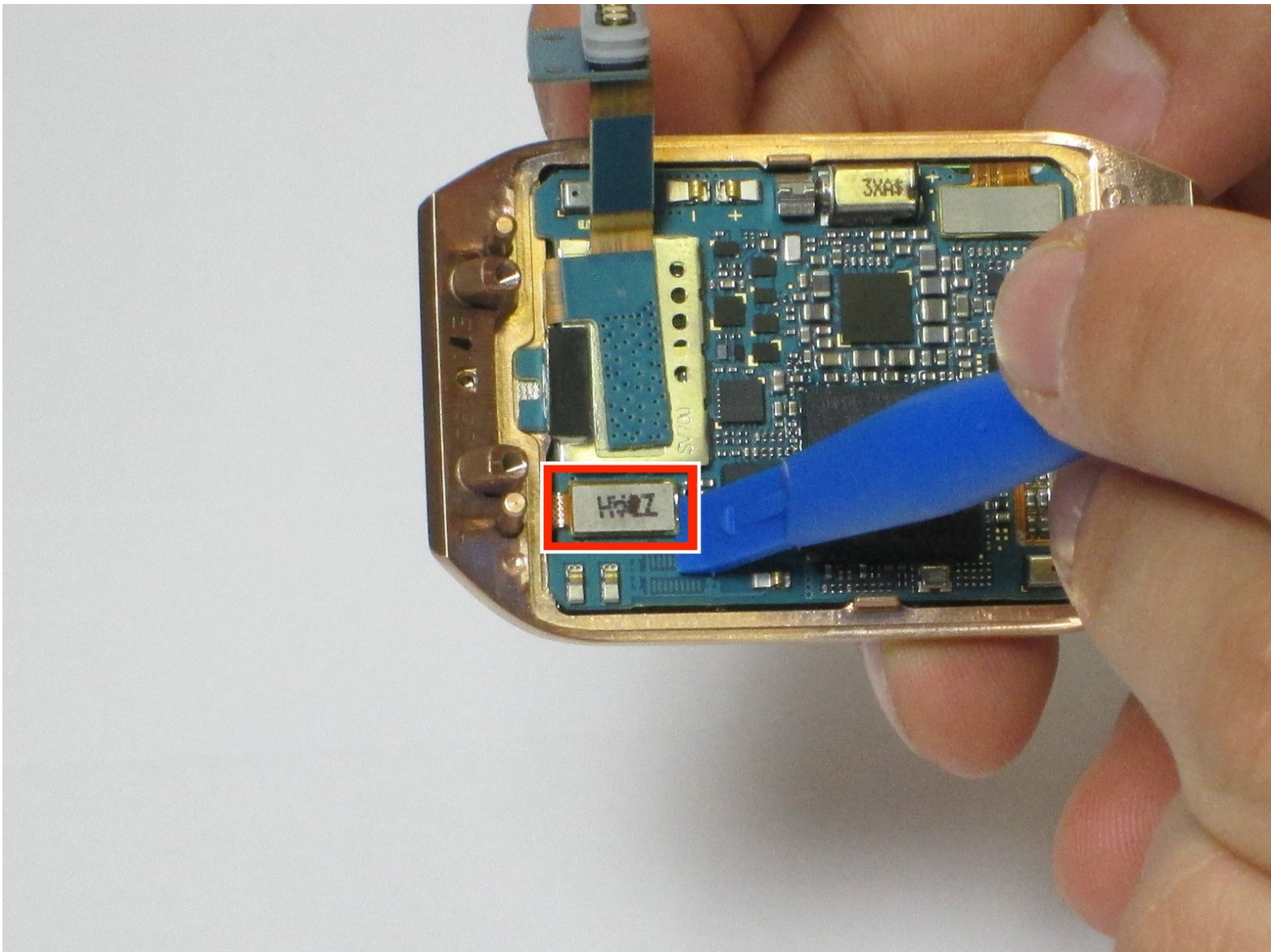




Samsung Galaxy Gear Motherboard Replacement

This is a guide on how to replace the motherboard on a First Generation Samsung Galaxy Gear Watch.

Written By: Joe



INTRODUCTION

If the motherboard needs to be replaced, this guide will demonstrate how to do so.



TOOLS:

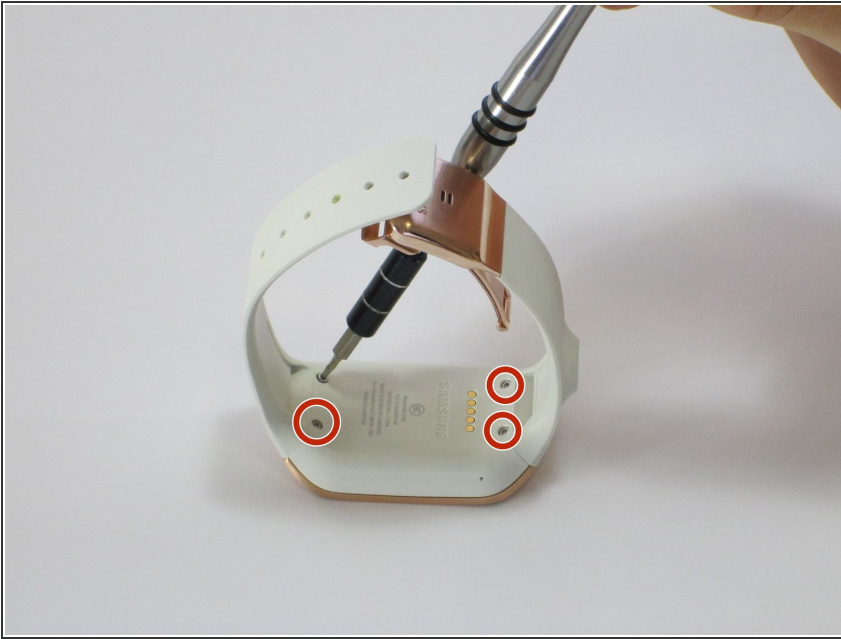
- [iFixit Opening Tools](#) (1)
- [T5 Torx Screwdriver](#) (1)



PARTS:

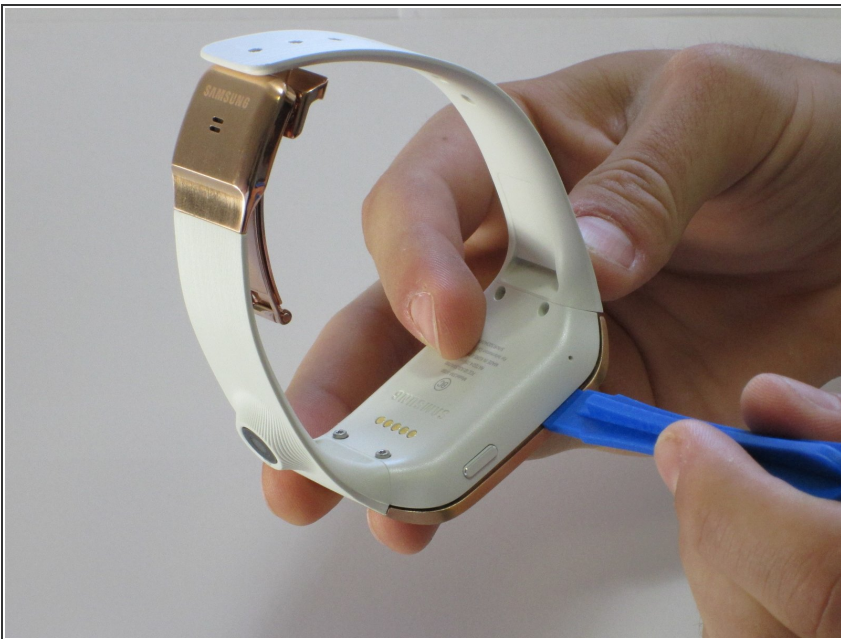
- [Galaxy Gear \(1st Gen\) Motherboard](#) (1)

Step 1 — Display Housing



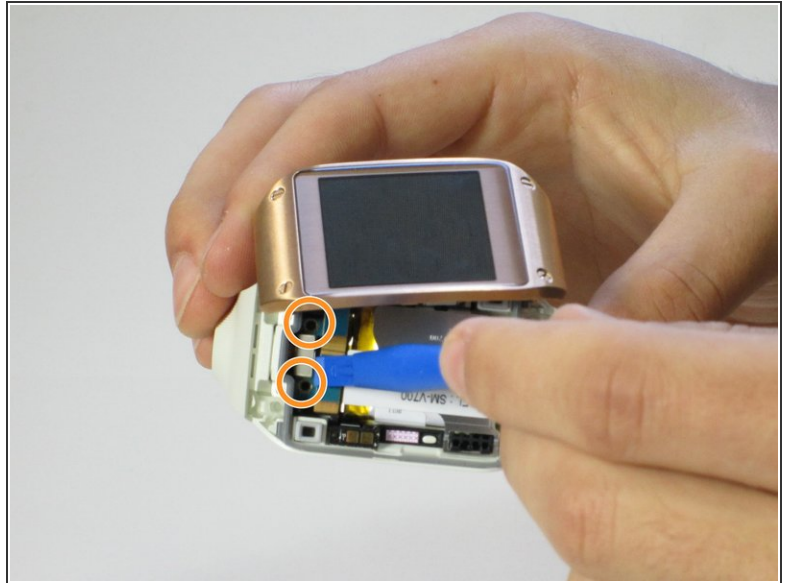
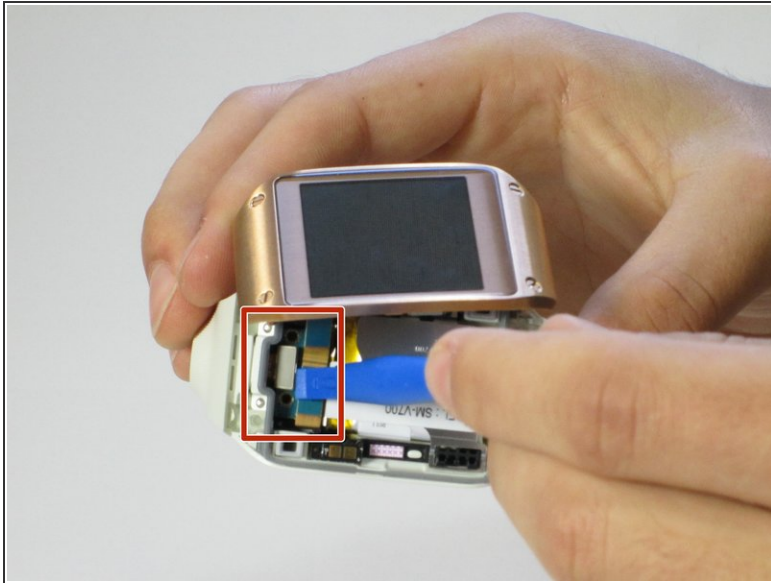
- Use a T5 Torx screwdriver to remove the four 4.0 mm screws on the back of the device.
- ☑ Be sure your device is turned off.

Step 2



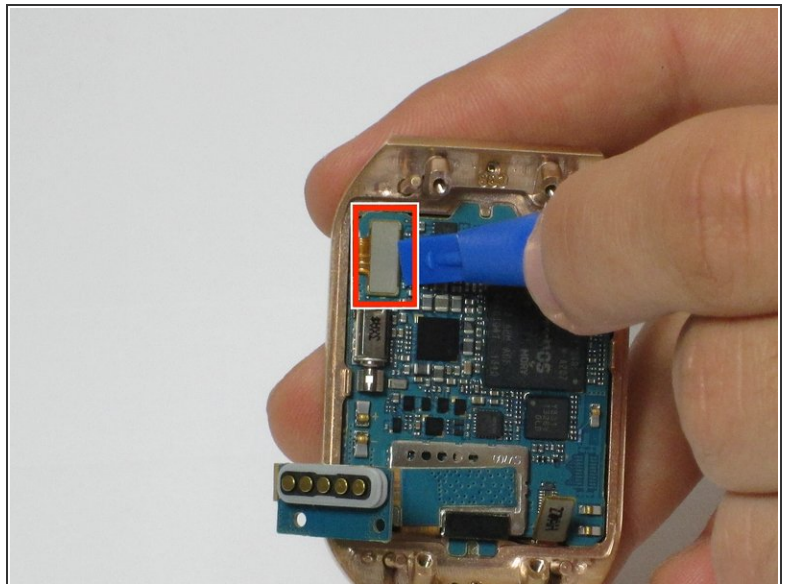
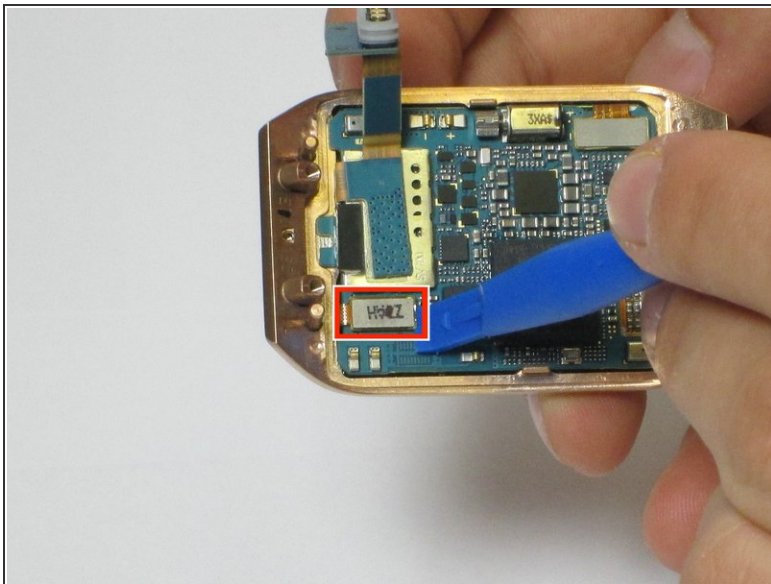
- Use a plastic opening tool to separate the display housing from the device.
- ⓘ To ensure you don't damage your device, insert the opening tool and slide it the entire length of the gap on both sides of the device.

Step 3



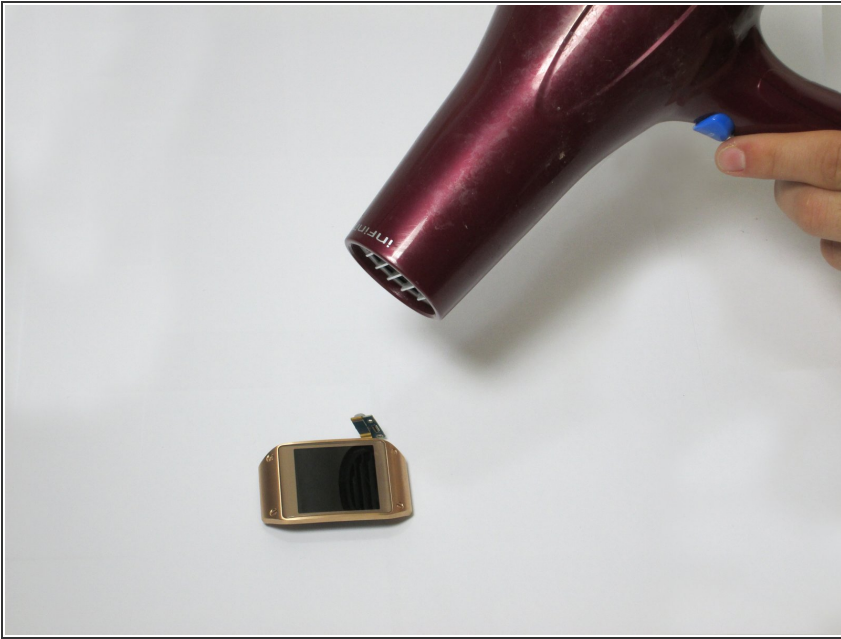
- Gently pry back the metal flap on top of the connector.
- Locate the two 2.0 mm black screws and unscrew using a Phillips PH00 bit. The connector will detach from the device.

Step 4 — Motherboard



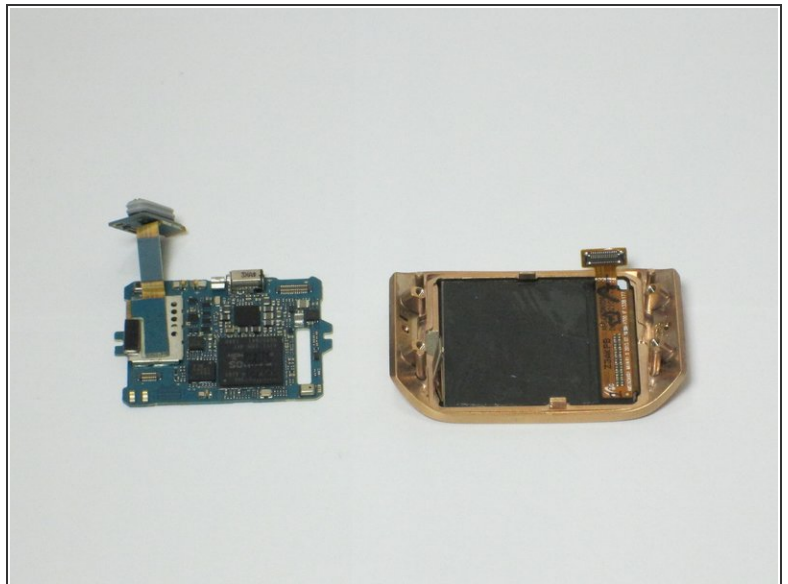
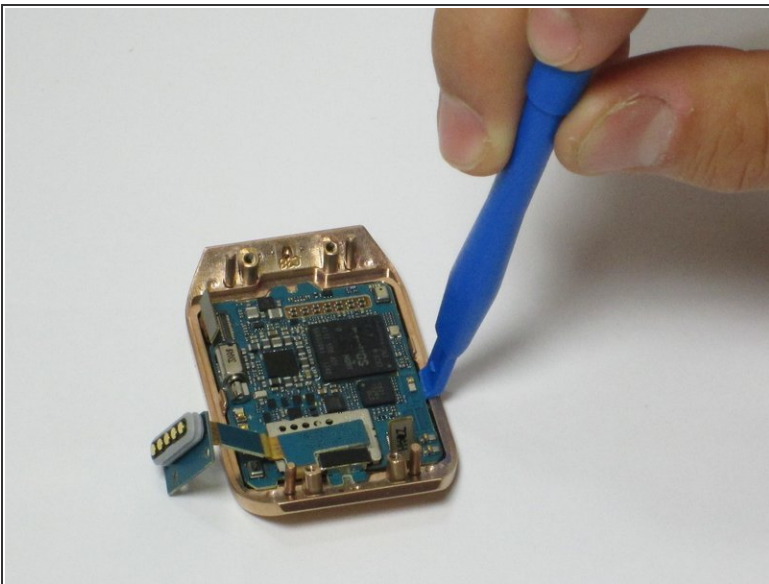
- On the display, use a plastic opening tool to lift up the two ribbon cables the motherboard.

Step 5



- The motherboard is attached to the display using an adhesive
- Using a heat gun, heat up the display for 4 to 5 minutes, making sure to move the heat gun around to distribute the heat around the display. This heats up the adhesive making the motherboard easier to remove

Step 6



- Using a plastic opening tool, carefully insert the opening tool in between the bezel and the motherboard and slide it the entire length of the logic board.
- Slowly pry up the motherboard from the display.

To reassemble your device, follow these instructions in reverse order.