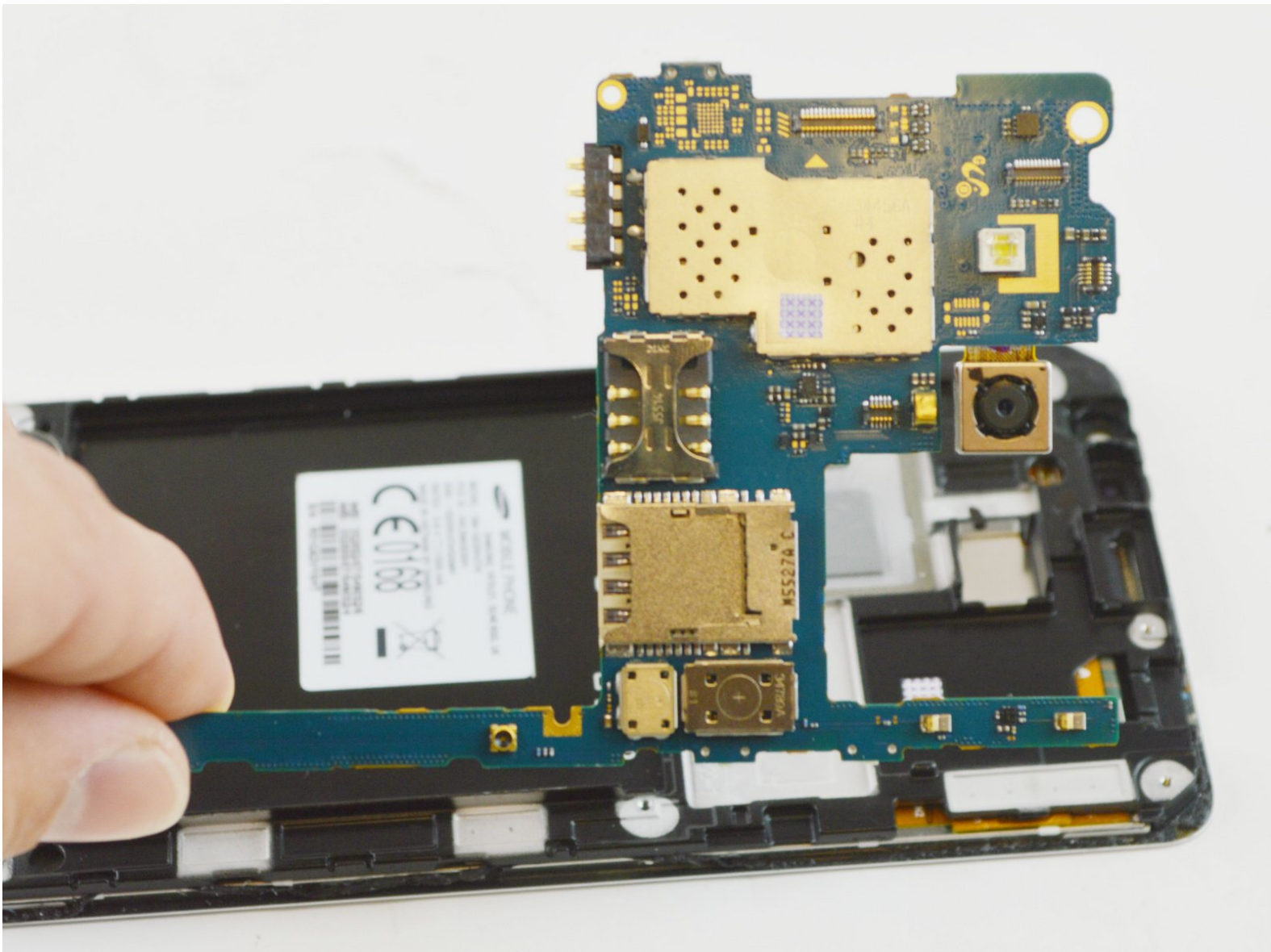




Samsung Galaxy Grand Prime Motherboard Replacement

If your phone isn't working and you can't find anything else wrong with it, you need to replace your motherboard.

Written By: Kyle Ruff



This document was generated on 2019-09-17 02:04:36 AM (MST).

INTRODUCTION

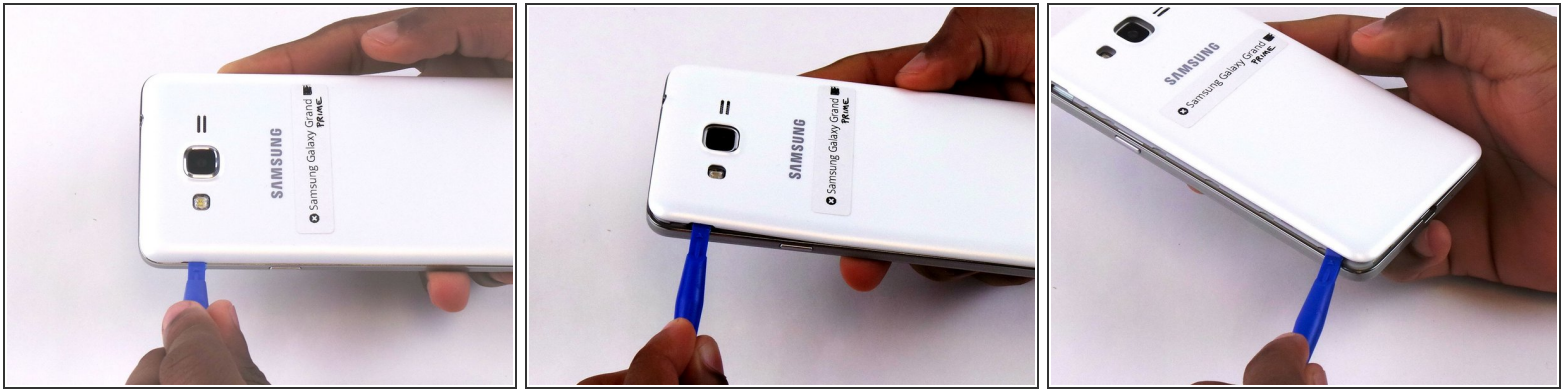
This replacement is needed if you can't find anything else wrong with your phone but it still won't work.



TOOLS:

- [iFixit Opening Tools](#) (1)
 - [Tweezers](#) (1)
 - [Phillips #000 Screwdriver](#) (1)
-

Step 1 — Battery



- Remove the back cover of phone by lifting up on the back cover tab with the blue plastic opening tool.
- Go around the edge of the back cover to completely remove it.

Step 2 — Remove the battery.



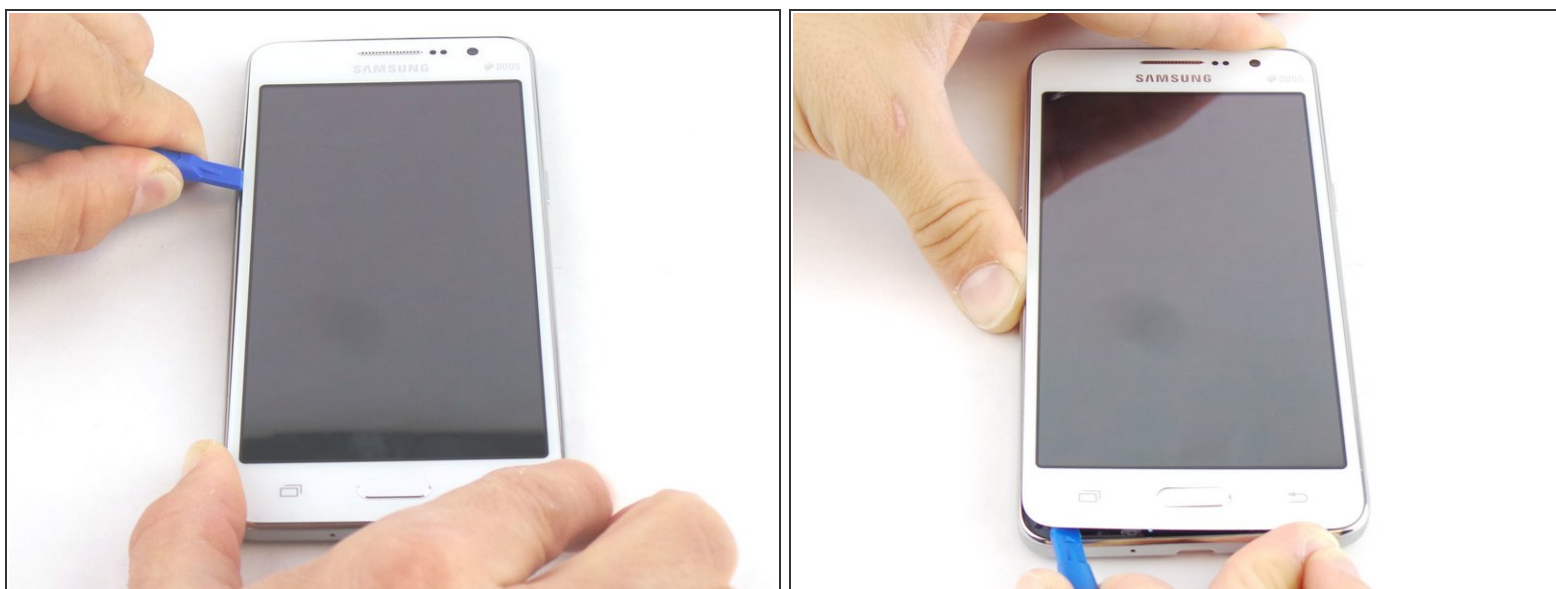
- Remove the old battery by lifting up on the thumb tab.
- Periodically clean the brass terminals on the battery and the phone. Place a minute amount of ISO on a Q-tip and gingerly clean the connections.

Step 3 — Midframe



- Remove the nine 4mm screws from the midframe with a Phillips #000 screwdriver.

Step 4



- Wedge the blue plastic opening tool in between the front and side panel.
- Move the blue plastic opening tool around the edges between the front and side panel.

Step 5



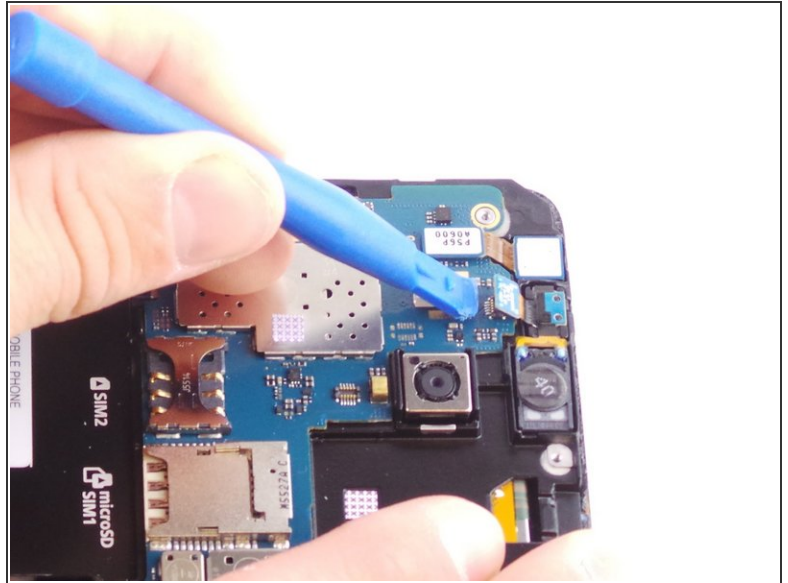
- Make sure that you detach the mid-frame from the inside too.

Step 6 — Headphone Jack/Speaker Assembly



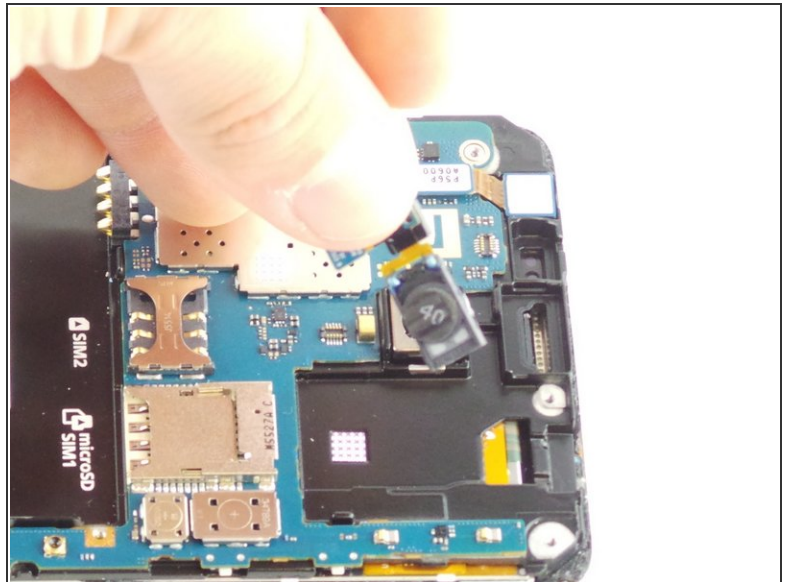
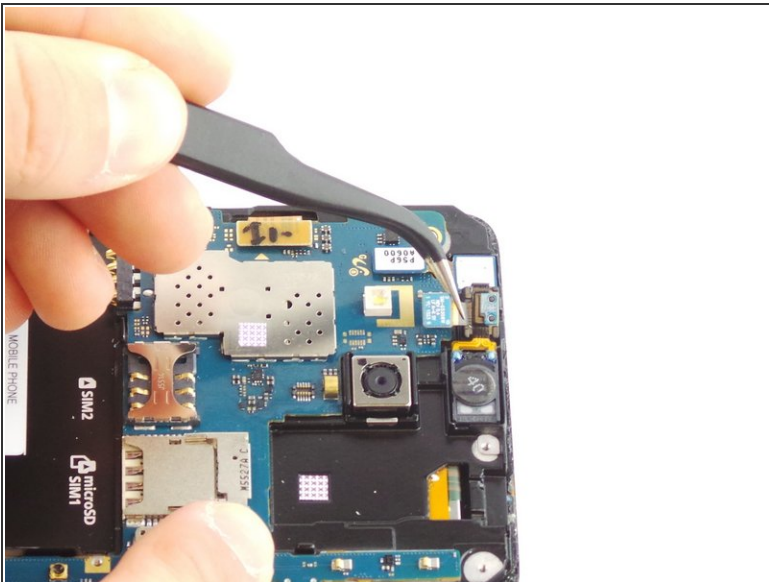
- Unhook the ribbon cable clip with the plastic opening tool and remove the audio jack.

Step 7 — Earpiece Speaker



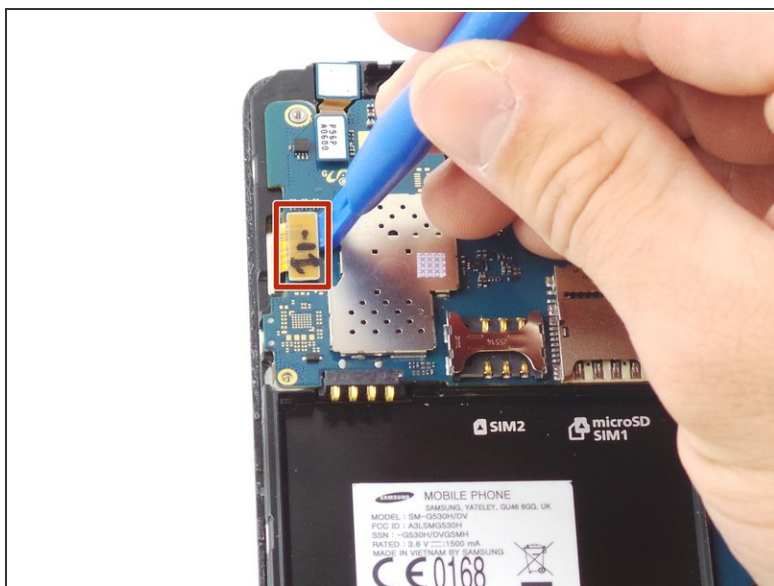
- Use the plastic opening tool to unhook the ribbon cable clip.

Step 8



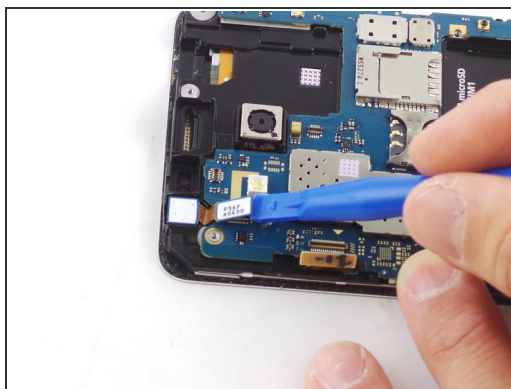
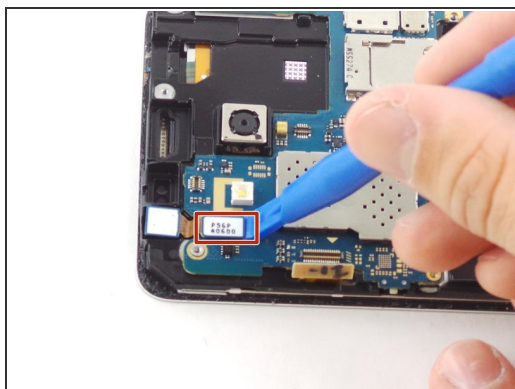
- Gently pull on the connector with the tweezers until the speaker comes off.

Step 9 — Motherboard



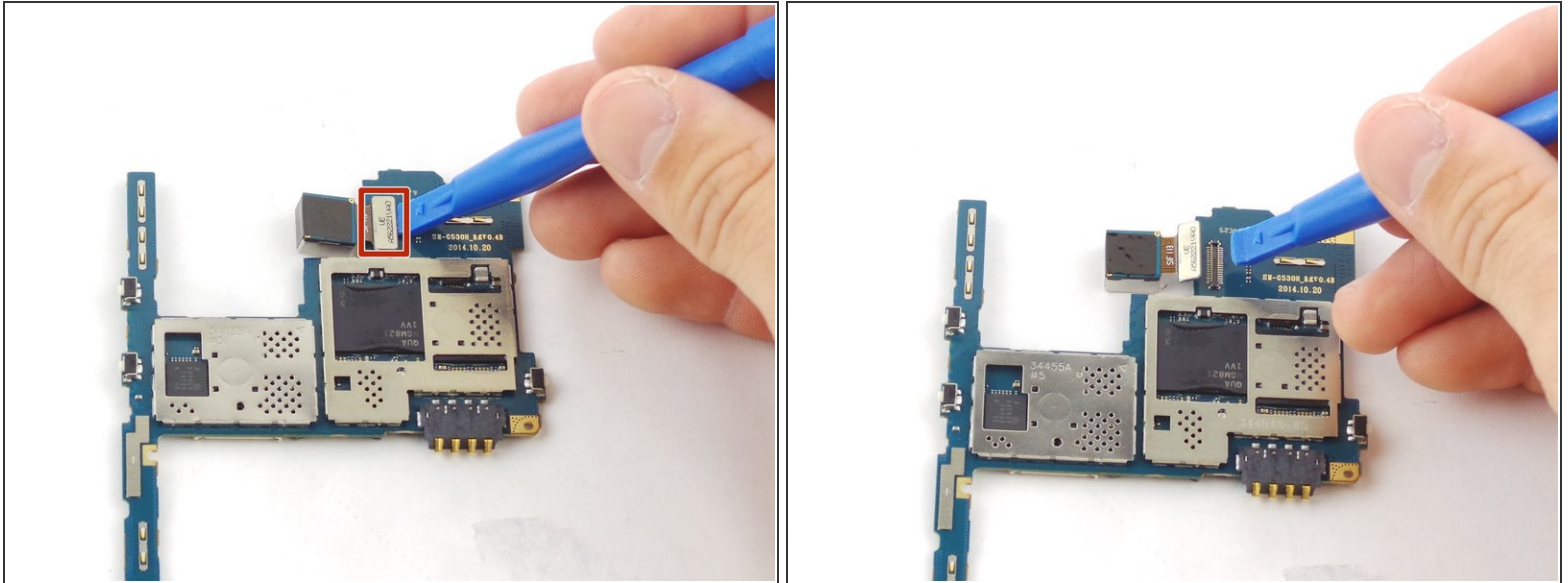
- Unhook the other ribbon cable clip to the screen with the blue plastic opening tool.

Step 10



- Unhook the ribbon cable clip to the front camera.
- Lift the motherboard up and out of the device.

Step 11



- Remove the motherboard and unhook the ribbon cable clip to the back camera.

To reassemble your device, follow these instructions in reverse order.