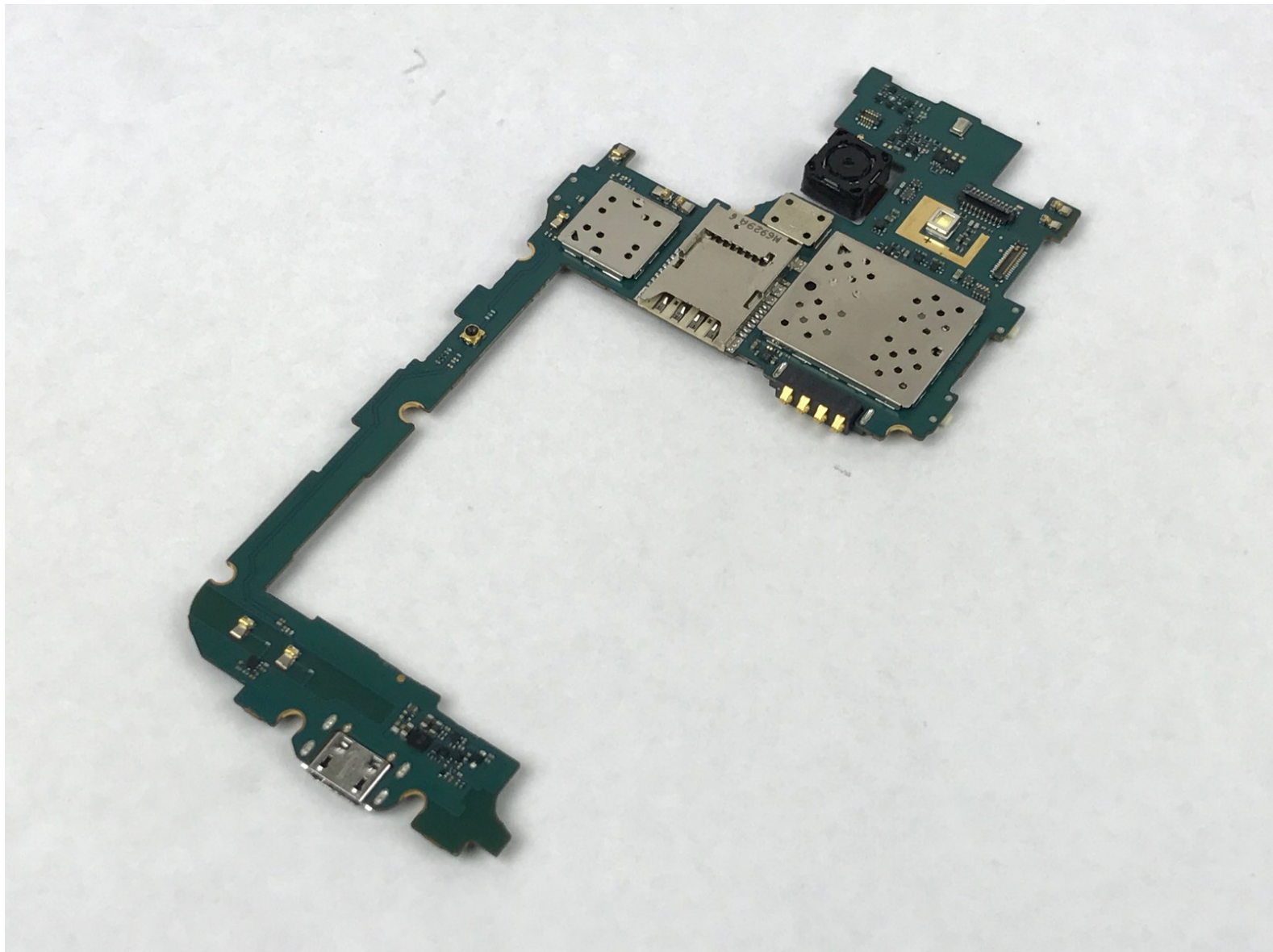




Samsung Galaxy J1 Motherboard Replacement

This guide will assist you in replacing your Samsung Galaxy J1's motherboard.

Written By: Sean Kramer



INTRODUCTION

Use this guide to replace your motherboard. When following these steps ensure that you do not remove the glass screen from the digitizer during step four.

TOOLS:

- [Phillips #00 Screwdriver](#) (1)
 - [iFixit Opening Tools](#) (1)
 - [Spudger](#) (1)
-

Step 1 — Midframe



- Insert a finger nail or plastic opening tool between the back cover and the device.
- Gently pry the rear cover off of the back of the phone.

Step 2



- Using a finger, pull the SIM card down out of its slot.
 - Remove the SIM card.
- i** The pictured device is missing the SIM card and battery.

Step 3




- Using a Phillips #00 screwdriver remove the eleven 3 mm screws.

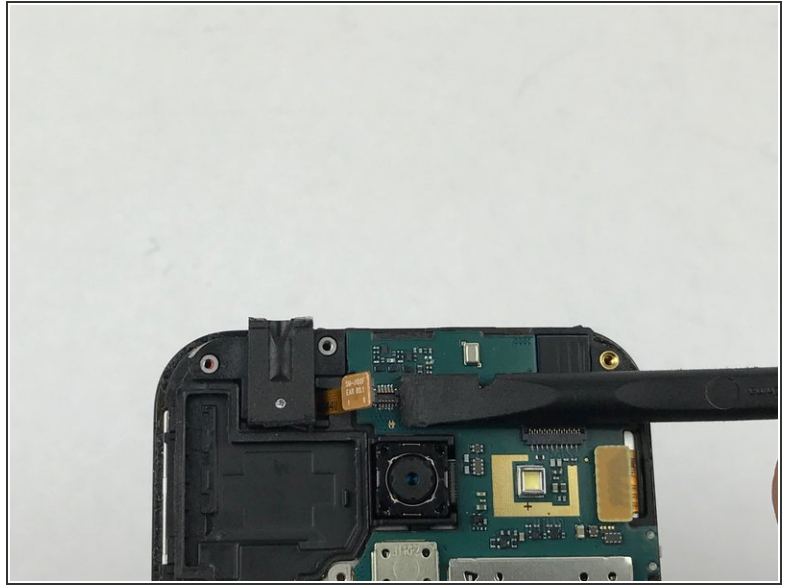
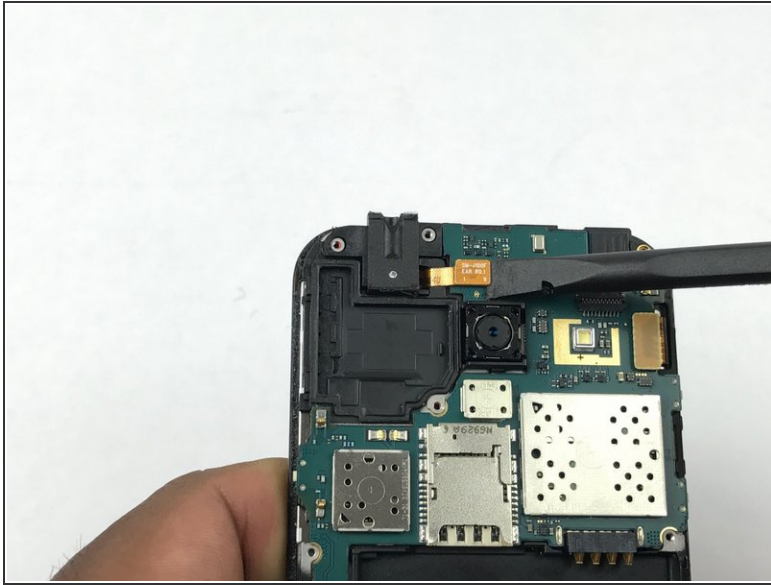
Step 4



- Insert a plastic opening tool between the screen and the back of the device.
- Starting at the bottom of the device, gently slide the tool along the edges of the screen.
- Gently pry the main assembly from the midframe of the device.

 When removing the main assembly, pry gently so as to not crack the glass screen or break any clips within the device.

Step 5 — Motherboard



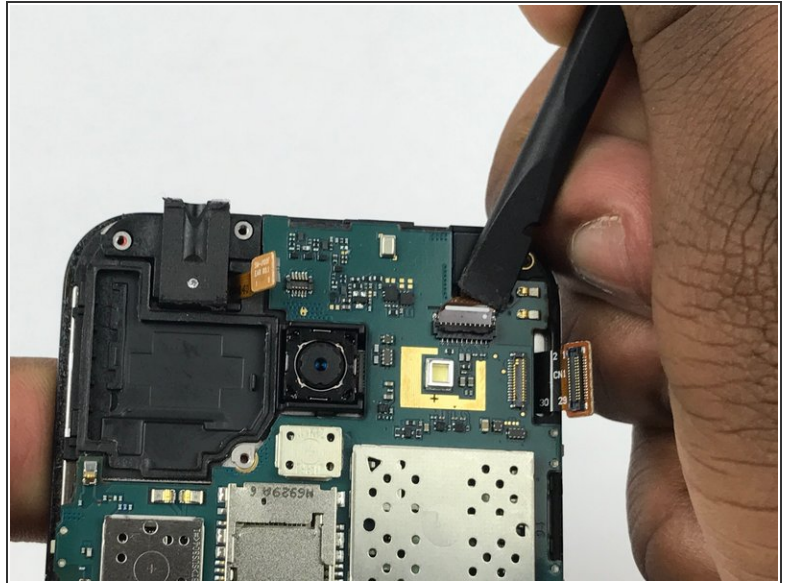
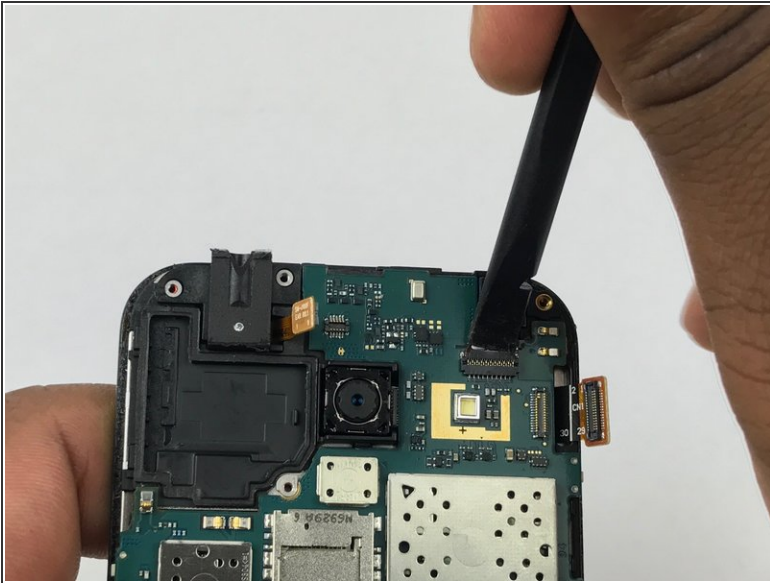
- Use the flat edge of a spudger to disconnect the ear speaker connector.

Step 6



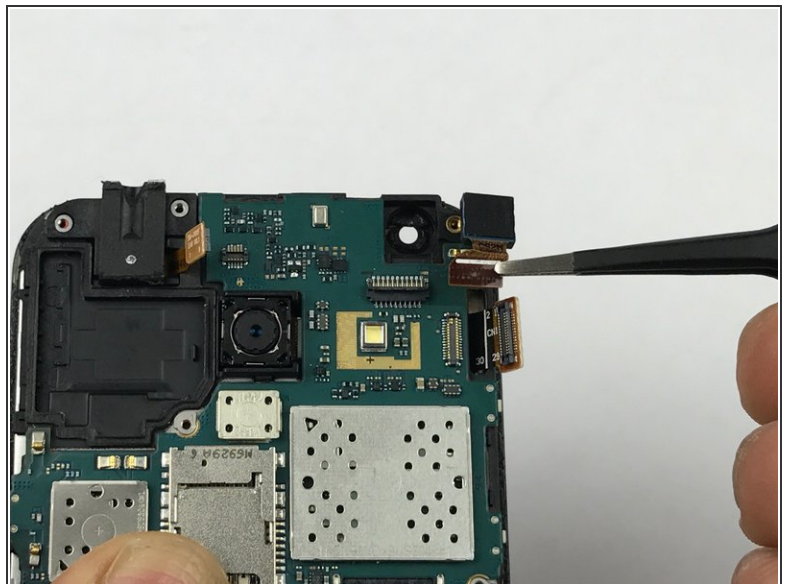
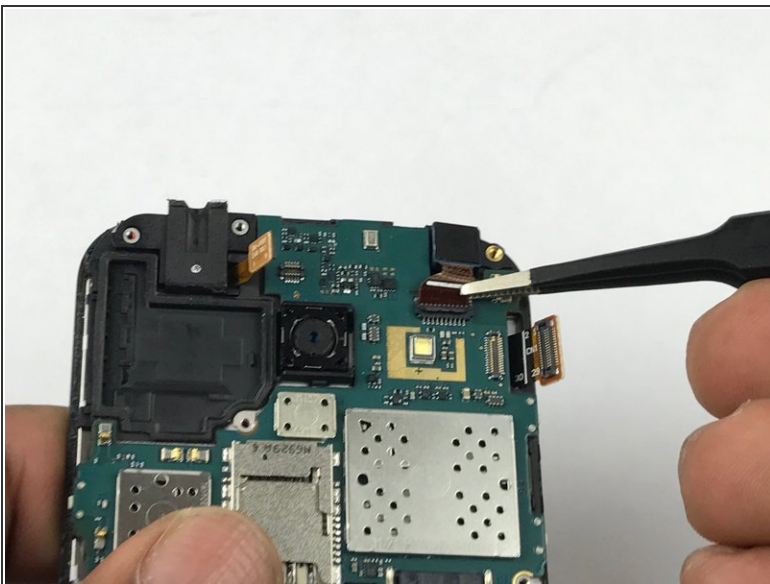
- Use the flat end of a spudger to disconnect the digitizer connector.

Step 7



- Use the flat end of a spudger to disconnect the front-facing camera cable connector.

Step 8



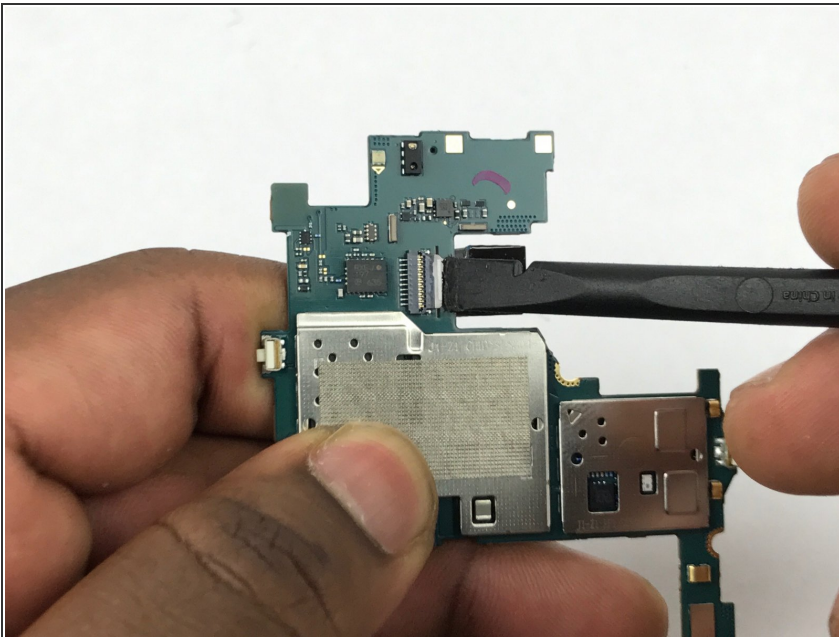
- Remove the front-facing camera.

Step 9



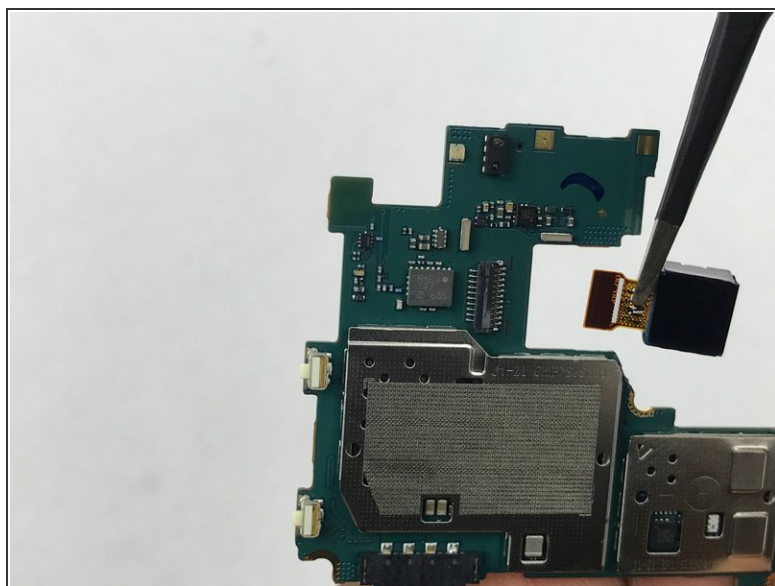
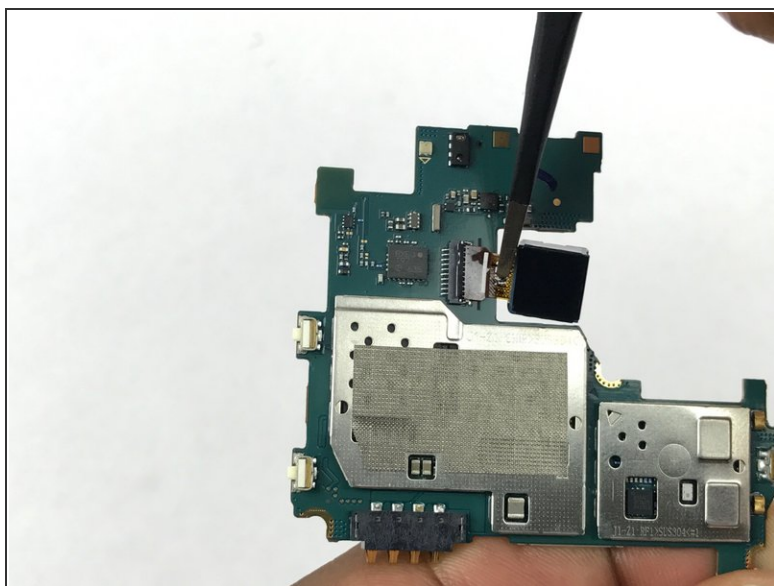
- Use the flat end of a spudger to gently pry under the motherboard.
- Remove the motherboard.

Step 10



- Use the flat end of a spudger to disconnect the rear camera cable connector.

Step 11



- Remove the rear camera.

To reassemble your device, follow these instructions in reverse order.