



# Samsung Galaxy J3 (2016) LCD Replacement

This is a guide how to replace the LCD of your Samsung Galaxy J3 (2016)

Written By: Hans





## TOOLS:

- [Heat Gun](#) (1)
- [Spudger](#) (1)
- [Tweezers](#) (1)



## PARTS:

- [Samsung Galaxy J3 2016 Screen and Digitizer](#) (1)

## Step 1 — Prepping the device



- It's always good practice to prepare the device before any repairs
- If the glass is broken or cracked I suggest adding tape on the surface in order to prevent risks
- ❗ This device, the glass was fine but the LCD has cracked due to unfortunate Flex.

## Step 2 — Removing the back cover



- In order to remove the back cover. Flip the device around and lift the back cover by the little slit on the upper left side

## Step 3 — Removing the Battery



- An unfortunately rare sight nowadays of a removable battery. Remove it by lifting from the lower right corner when there is a little notch

## Step 4 — Remove SIM & SD (optional)



- This is optional as the cards will not interfere with the replacement.
- Since the device will be subject to massive heat. I would still recommend to remove them (just in case)



## Step 5 — Detaching the LCD connection



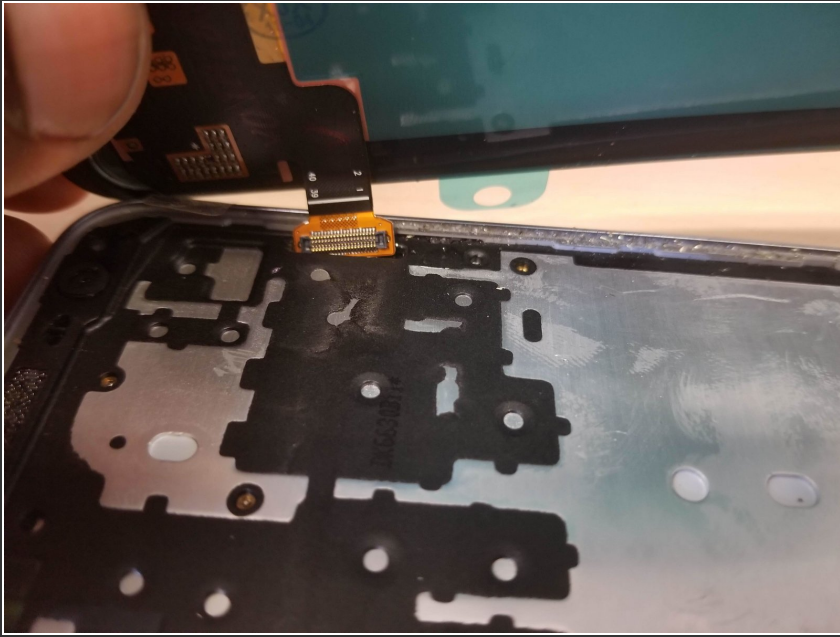
- The LCD ribbon is very easy to access. Just pop that little door open and you will have access to it.
- Like always with such device, be careful not to force anything out. You will damage the board if the connector is uncorrectly detached.
- You can see the water damage indicator there (the white square)
- There is a another one inside the cover that protect that zone.

## Step 6 — Removing the LCD



- Heat with a heatgun the surrounding of the device. Be careful there are very fragile ribbons hidden away.
- ⓘ I suggest starting from the bottom corner and lift the heated glass with a pry tool.
- It is better to go from left to right as the main LCD ribbon is located on the right top corner
- ⚠ I strongly suggest NOT using metal tools (like pictured) as it cut thru the digitizer ribbon when I was around the left top corner

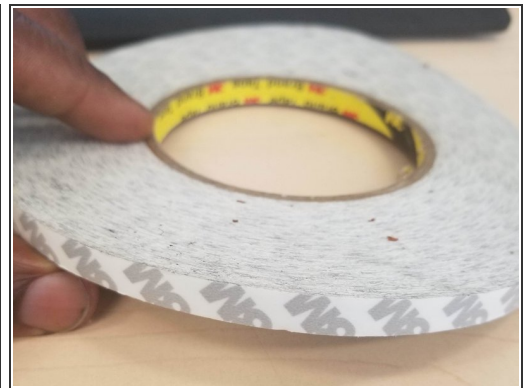
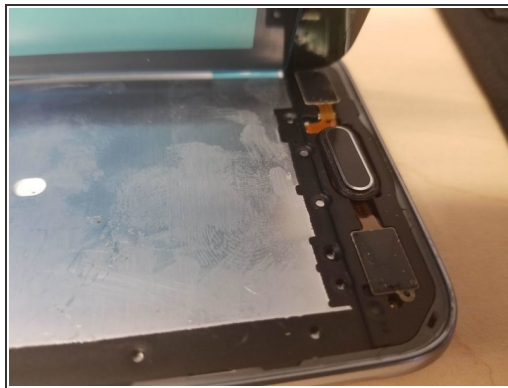
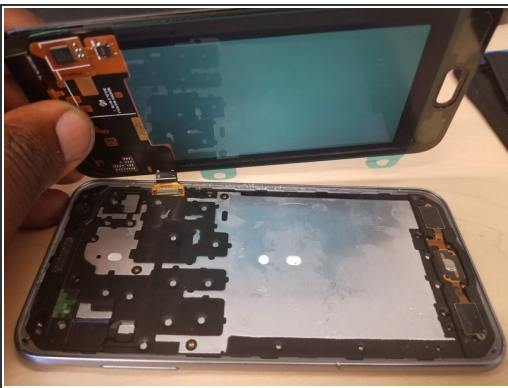
## Step 7 — Removing the LCD (2)



- You can now detach the assembly from the body by passing thru the connector on the designed whole on the side.

⚠ The LCD is held by a VERY strong adhesive. Be careful when handling that part.

## Step 8 — Placing the new screen



- As the reverse of the last step slide the connector in the designed slit.
- Be careful to make a test fit before adding any adhesive

⚠ Don't forget to add or align the center key before closing down anything

ⓘ Once placed I suggest adding additional adhesive on the center place to further secure the screen.

## Step 9 — Done !



- After re-attaching the LCD. Test the device by powering it back up.

Enjoy your newly repaired device!