



# Samsung Galaxy J3 Eclipse Display Assembly Replacement

This guide will help you fix a broken or shattered screen on your Samsung J3 device.

Written By: Chandler Casey



# INTRODUCTION

This guide will help you fix a broken or shattered screen on your Samsung J3 device.



## TOOLS:

- [iFixit Opening Tools](#) (1)
- [Heat Gun](#) (1)
- [Tweezers](#) (1)



## PARTS:

- [iFixit Adhesive Remover \(for Battery, Screen, and Glass Adhesive\)](#) (1)
- [Galaxy J3 LCD Screen](#) (1)

## Step 1 — Display Assembly



- Use a heat gun or hair dryer to heat up the front edges of the phone for about two minutes. Stay approximately six inches away from the screen to prevent phone damage.

⚠ Do not apply heat to any one edge of the phone for longer than a few seconds. Instead, use a continuous motion around the phone's edges.

## Step 2



- While the screen adhesive is still warm and flexible, insert a pry tool or plastic card between the glass display and the frame of the phone.
- Slowly slide another pry tool around all the edges of the phone in order to break the adhesive's bond to the display.

⚠ When using the pry tool, do not use too much force or the phone's internals could be damaged.

⚠ Do not insert your tool more than 1cm into the top edge of the phone to avoid damaging the fragile cables.



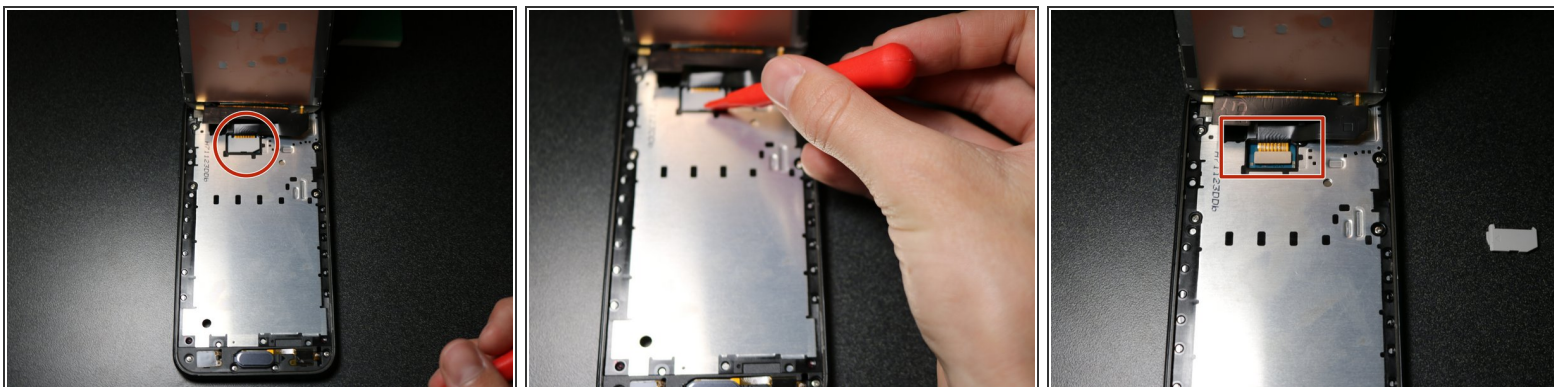
## Step 3



- Gently lift lower side and loosen all edges to hinge screen up from bottom.

⚠ Do not try to completely remove the display from the frame yet. Simply try to loosen up all the edges.

## Step 4



- Use your prying tool to slowly pry up on the **bottom right corner** of the white cable guard, exposing a thin ribbon cable connector.

## Step 5



- Pry up the ribbon cable connector revealed from under the cable guard and remove the display from the device.
- Clean the residue from the phone edges before re-assembling phone with new screen.

To reassemble your device, connect all cables, apply fresh screen adhesive and follow these instructions in reverse order.