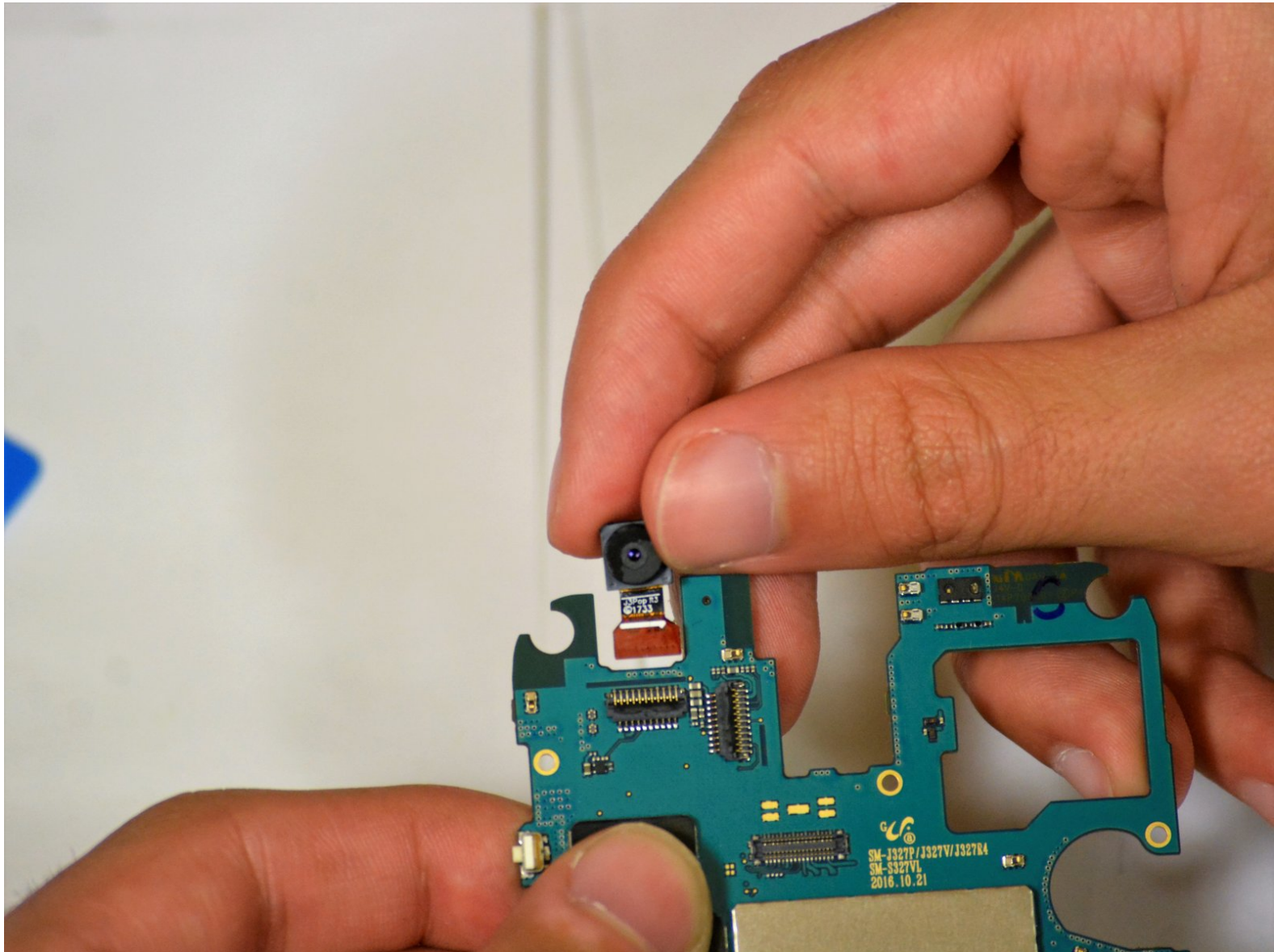




Samsung Galaxy J3 Emerge Camera Replacement

How to replace the camera for a Samsung Galaxy J3 Emerge Model SM-J327P.

Written By: Hugh Cosculluela



INTRODUCTION

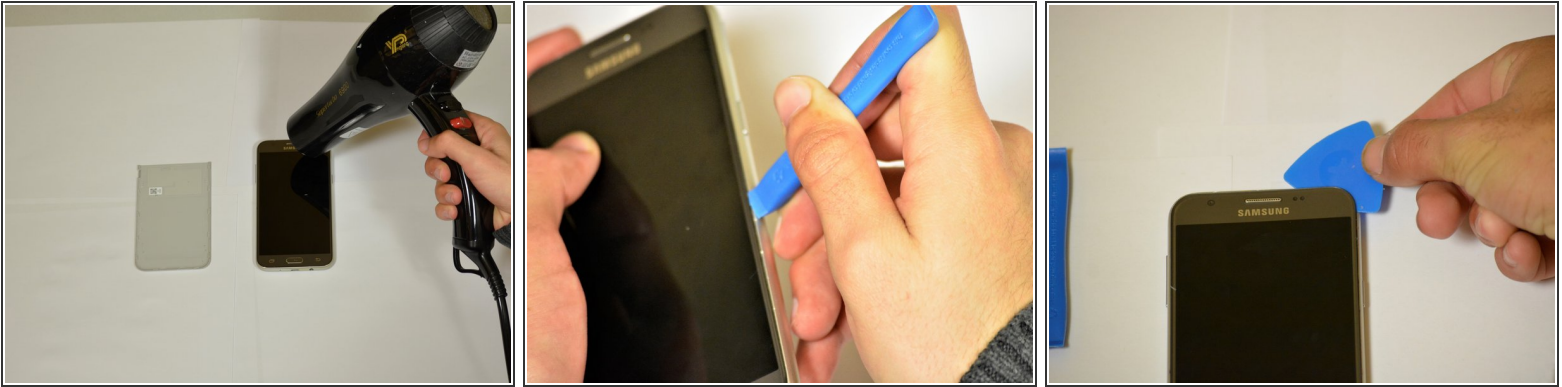
Camera Replacement guide for a Samsung Galaxy J3 Emerge Model SM-J327P. Front and back cameras may need replacement if they are cracked. Each camera is found behind the motherboard. You will need time to open the motherboard before replacing the cameras.



TOOLS:

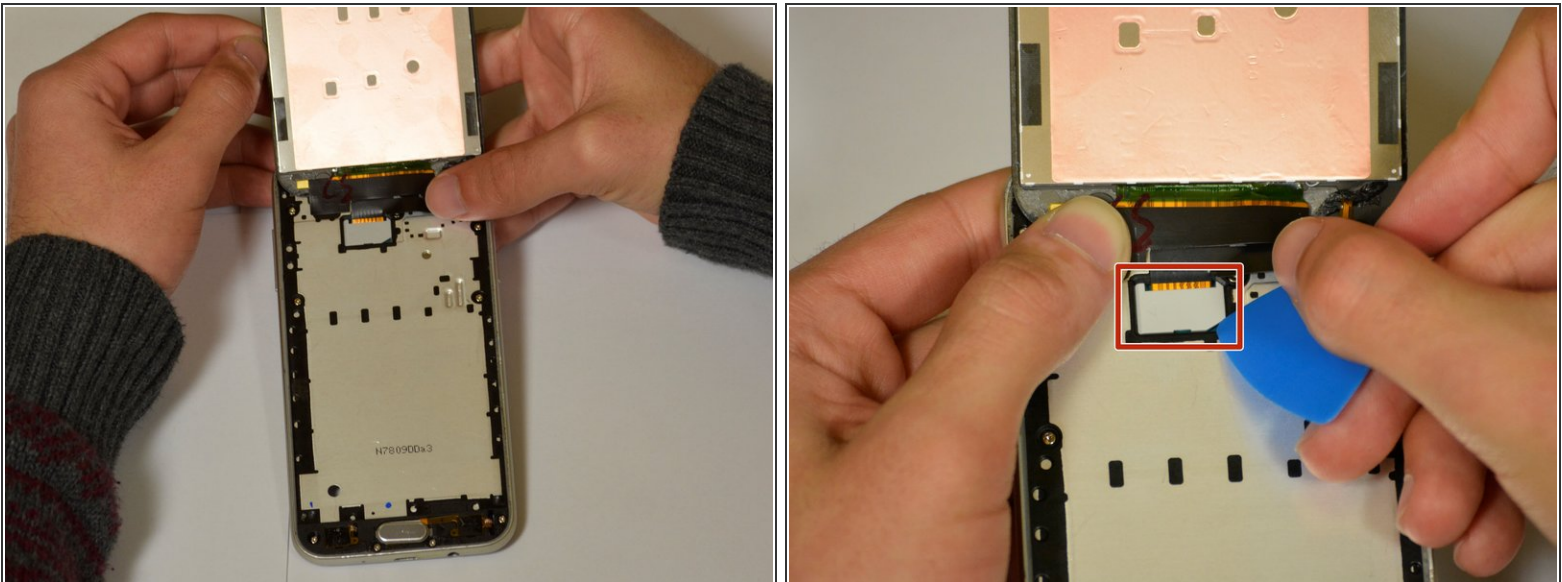
- [Phillips #00 Screwdriver](#) (1)
 - [iFixit Opening Tools](#) (1)
 - [iFixit Opening Picks set of 6](#) (1)
-

Step 1 — Screen



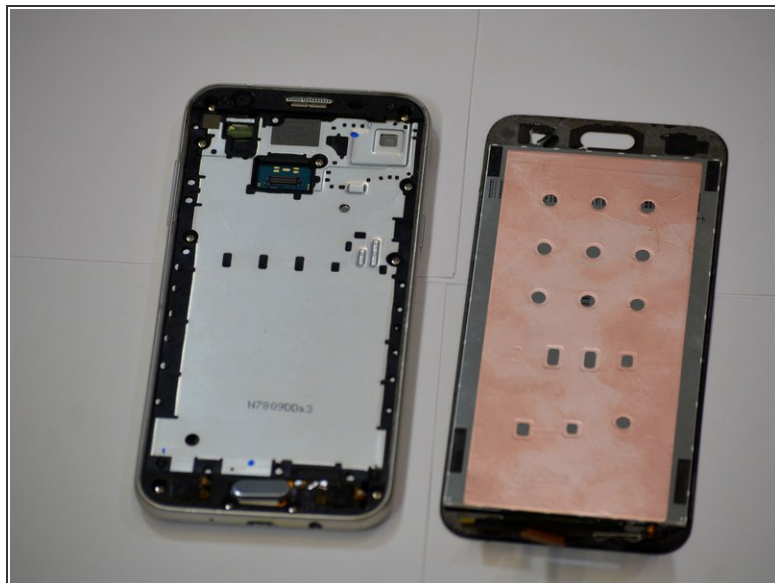
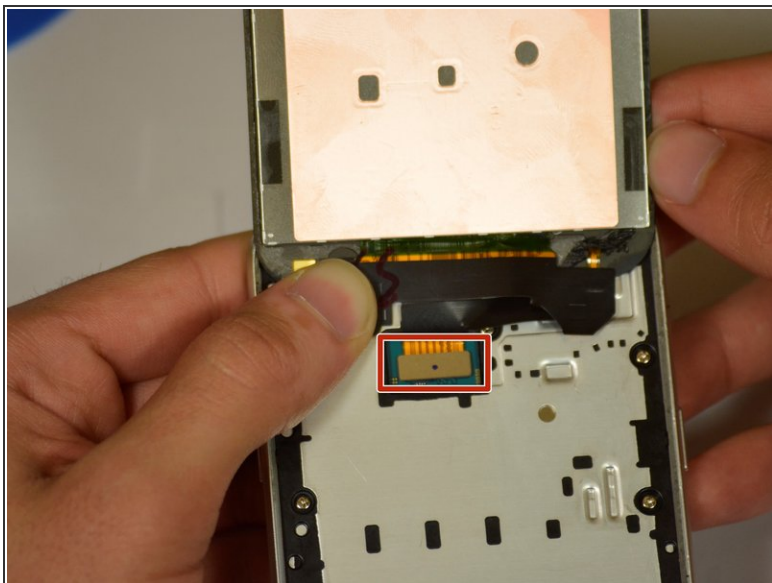
- Heat up the edges of the screen with a hair dryer.
- Put the iFixit Opening Tool between the screen and body to open the edge of the screen up.
- Work the iFixit Opening Tools around the whole screen to break the glue.

Step 2



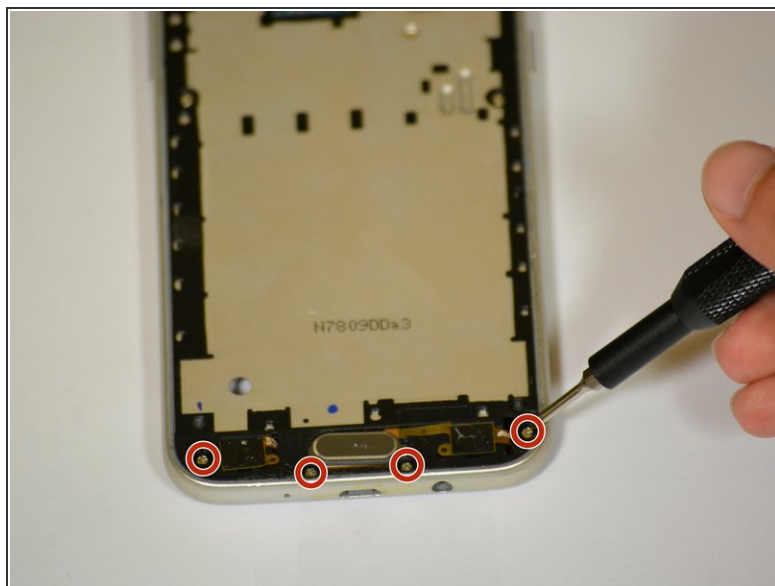
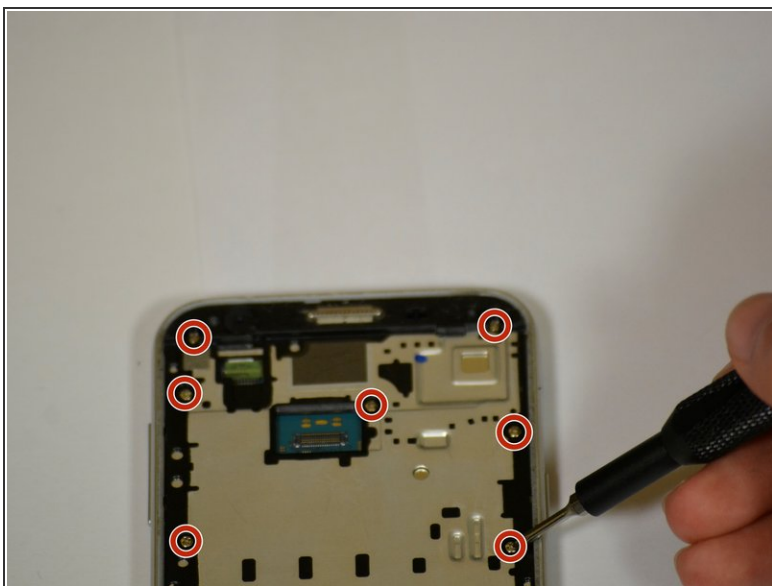
- Lift the screen up from the bottom.
- ⚠ The screen could crack when lifting it up.
- Pry the gray cover open.

Step 3



- Pry the connector off of the motherboard by using a clean nail or the iFixit opening tool.

Step 4 — Motherboard



- Remove the eleven Phillips #00 3.5mm screws.

i If the screws get stuck when removing, try using tape to get them out. Place the adhesive side of tape on the screws and pull the tape off the spot.

Step 5



- Turn the phone over and push down where the battery was.
- ⓘ There will be a loud clicking noise when applying pressure.

Step 6



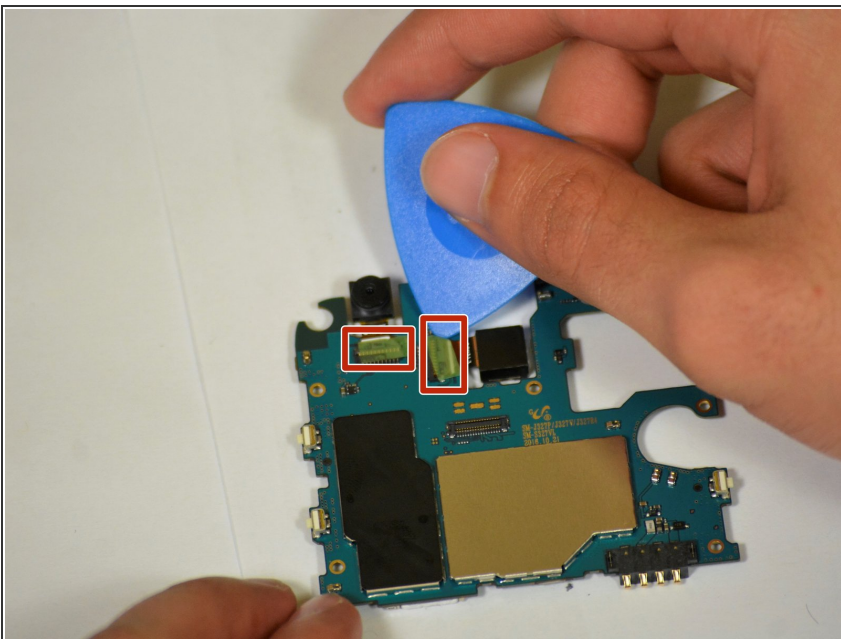
- Insert the iFixit Opening Pick between the motherboard and the panel.
- Work the iFixit Opening Pick around the outside of the motherboard.

Step 7



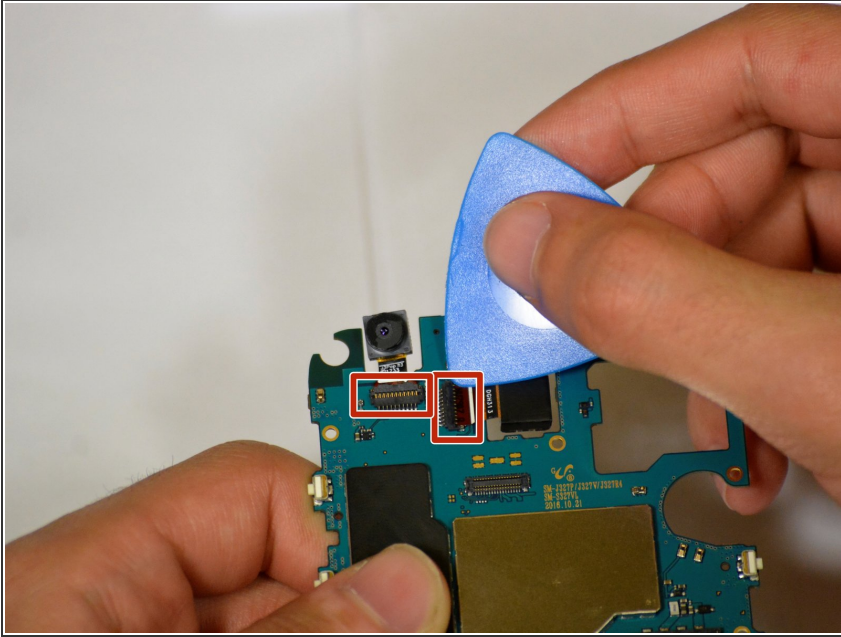
- Pry the motherboard away from the phone using your hand.

Step 8 — Camera



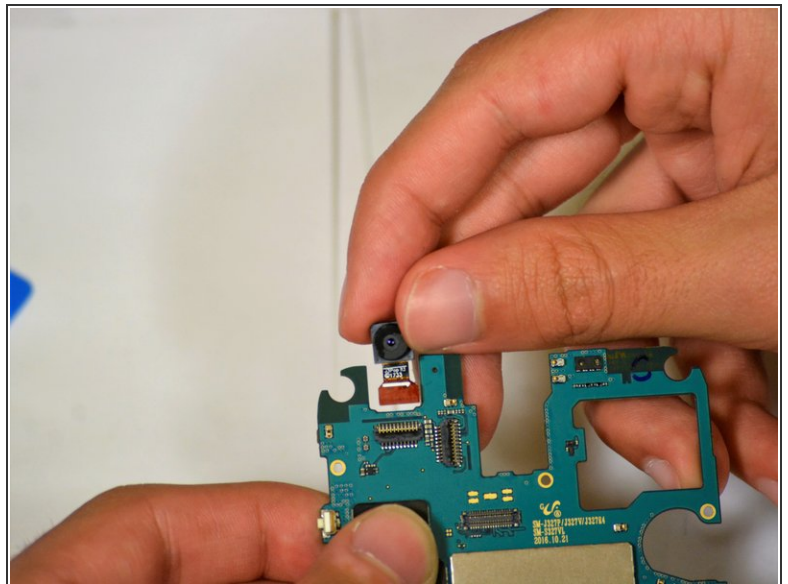
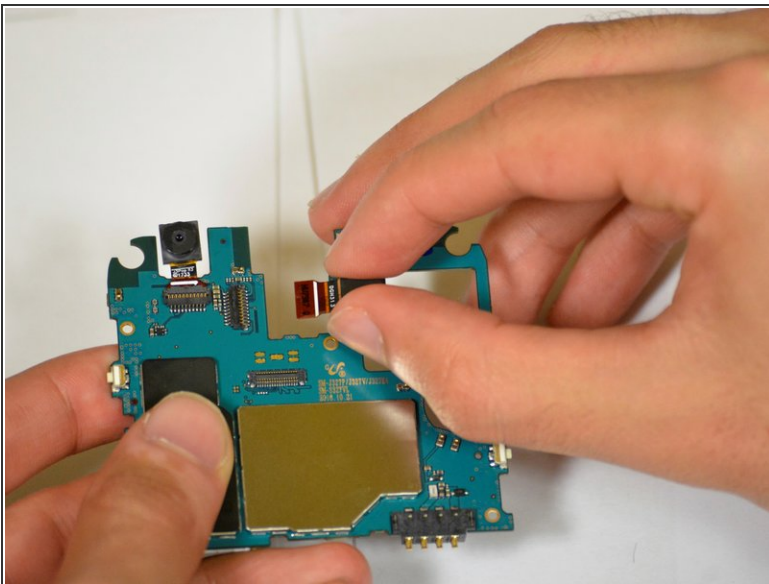
- Pull the green tape over the connectors off.

Step 9



- Lift up the tabs to reveal the ribbons.

Step 10



- Pull the two camera ribbons away from the connectors.

To reassemble your device, follow these instructions in reverse order.