



Samsung Galaxy J3 Middle Frame Bezel Replacement

This will fix the "camera cracked" look when taking pictures.

Written By: Makayla Williams



INTRODUCTION

The plastic covering over the camera can sometimes crack or break off completely. This guide will show you how to replace the middle frame bezel including the camera cover.



TOOLS:

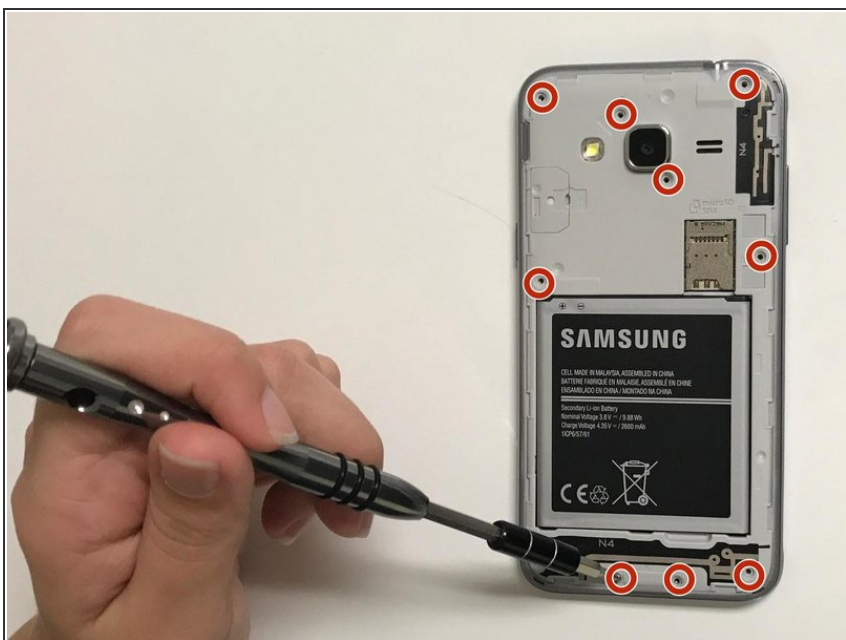
- [Metal Spudger](#) (1)
 - [Phillips #000 Screwdriver](#) (1)
-

Step 1 — Middle Frame Bezel



- Separate the back casing from the phone by carefully using your fingers to pry it apart.

Step 2



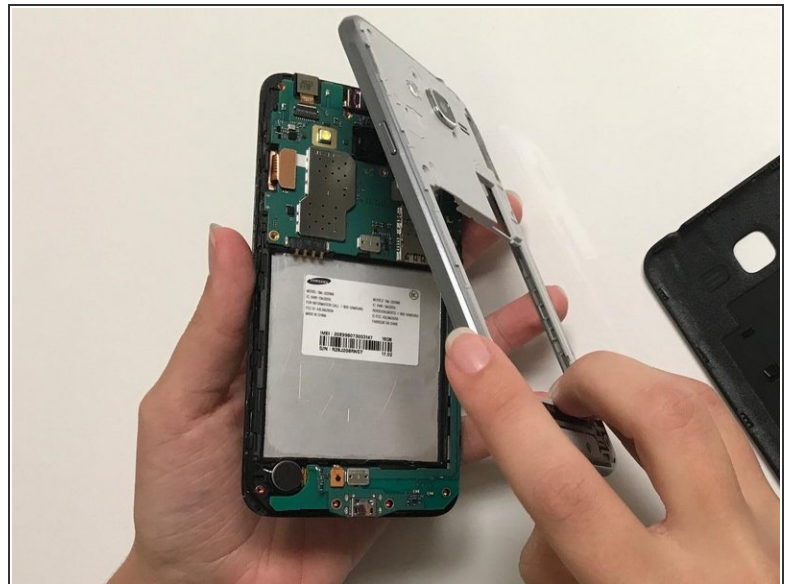
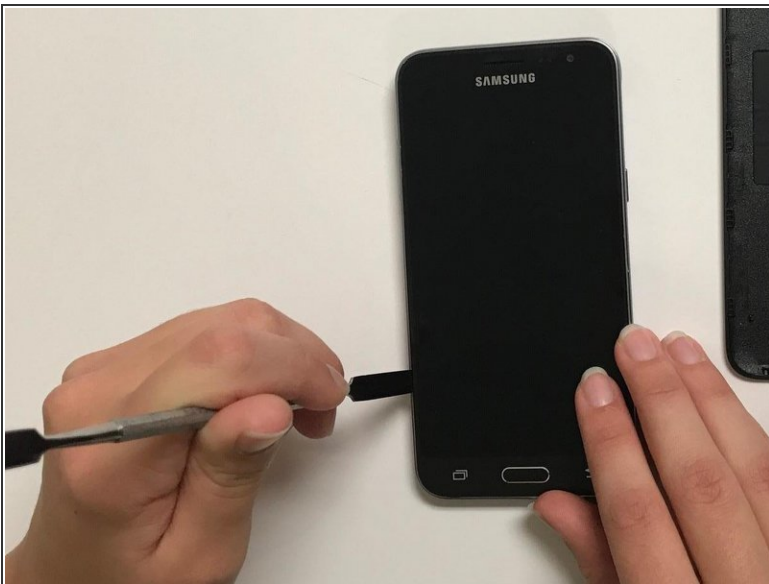
- Remove all 11 screws by using the J000 Phillips head from the 64 Bit Driver Kit.

Step 3



- Remove the battery by gripping on and pulling up.

Step 4



- Use the flat side of the metal spudger to remove the middle frame bezel, and replace.

⚠ Do not use a wrenching motion while performing this step. The screen may crack.

To reassemble your device, follow these instructions in reverse order.