



Samsung Galaxy J7 Front Facing Camera Replacement

How to replace front facing camera on the Samsung Galaxy J7.

Written By: Justin Thompson



Step 1 — Back Cover



- Take off the back by pulling on the tab near the top left of the back of the device.

Step 2 — Back Panel Disassembly



- Take out the battery before unscrewing the screws.

Step 3



- Using the Phillips screwdriver bit size 000, unscrew out all 10 4.19mm screws.

Step 4



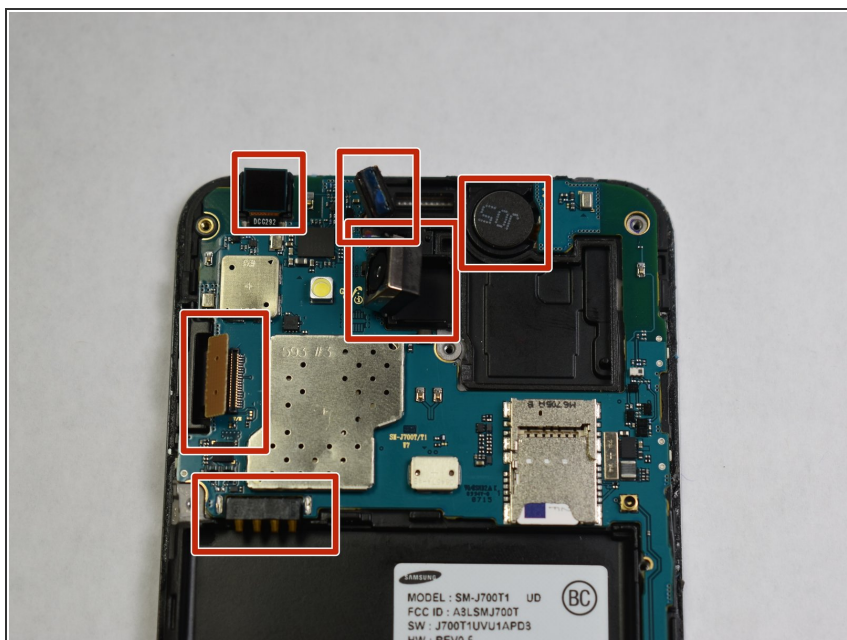
- Use the iFixit Opening Tool to lift up the back, to disconnect the back with the inside of the device.

Step 5 — Front Facing Camera



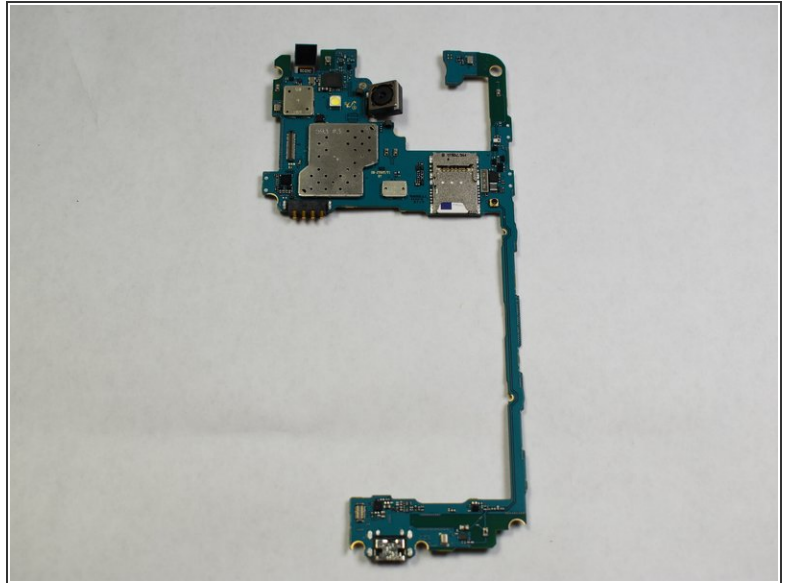
- Remove single screw from back of device. This is the only screw that must be removed to take off this piece.

Step 6



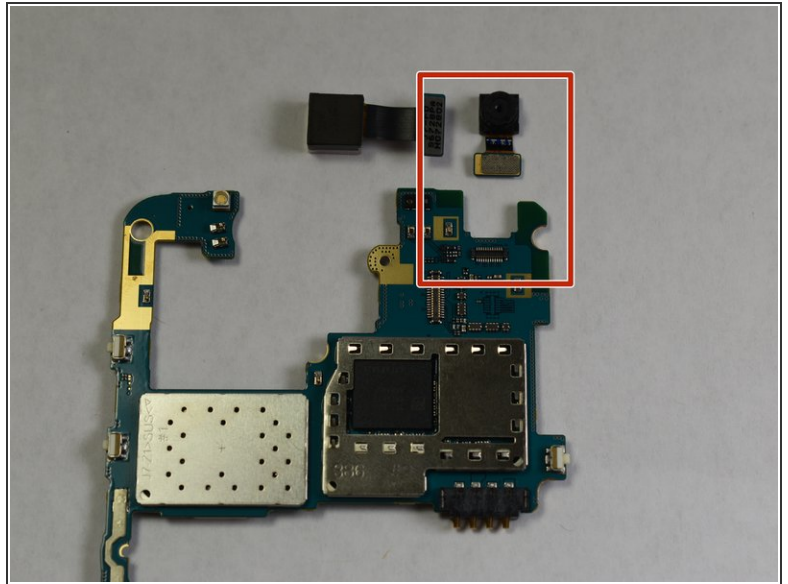
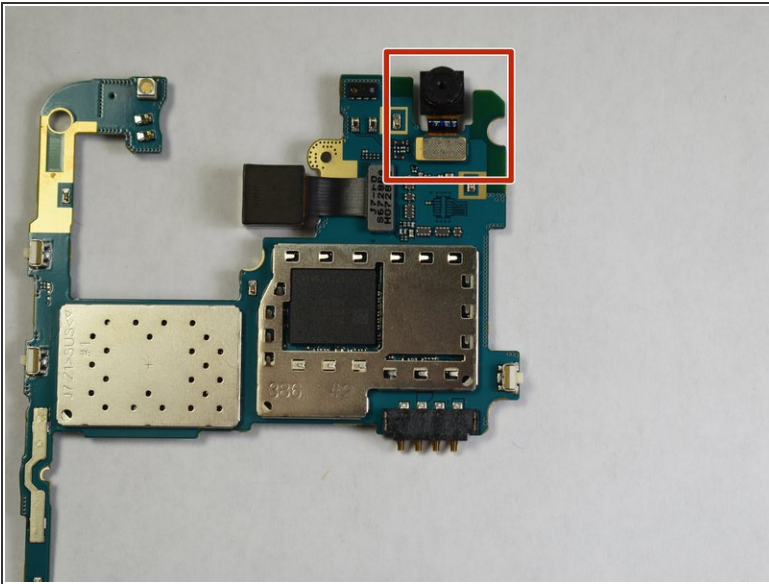
- Make sure to pull up all of these parts in order to properly take off the next piece.

Step 7



- Pull the blue/green piece away from the black piece. They should not need any force to be removed. The next step will deal with using the green/blue piece from the second picture.

Step 8



- Flip over the piece (180 degrees). Remove the boxed out piece. This is the front facing camera.

To reassemble your device, follow these instructions in reverse order.