



Samsung Galaxy Light Battery Replacement

This will guide you through removing and replacing the battery.

Written By: Paul Goyette



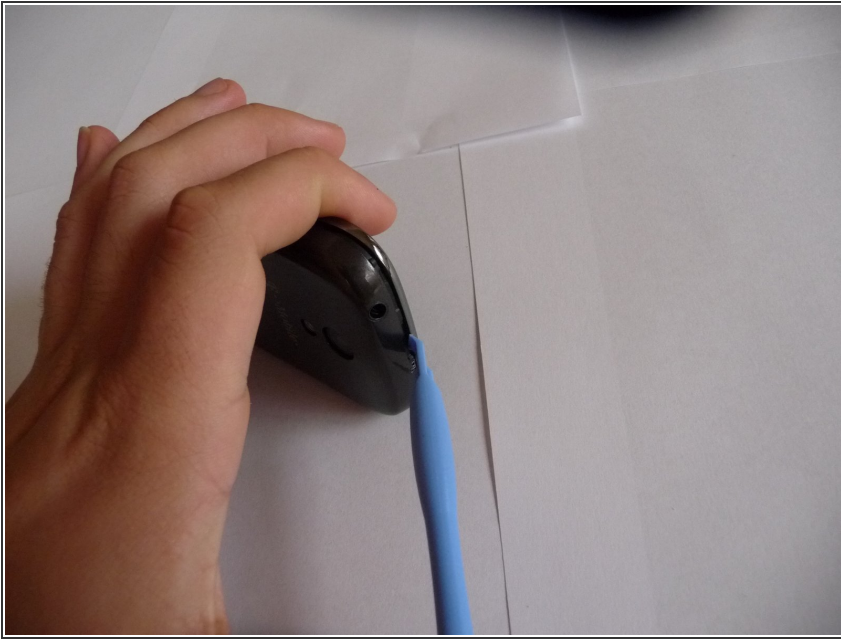
**TOOLS:**

- [iFixit Opening Tools](#) (1)

**PARTS:**

- [Samsung Galaxy Light Battery](#) (1)

Step 1 — Remove Back Cover



- ⚠ Before removing the back cover, make sure the Samsung Galaxy Light is completely off.
- Using a plastic opening tool (or your fingernails), pry up the back cover of the device.
- Remove the back cover.

Step 2 — Remove Battery



- Remove the battery from the device.

To reassemble your device, follow these instructions in reverse order.