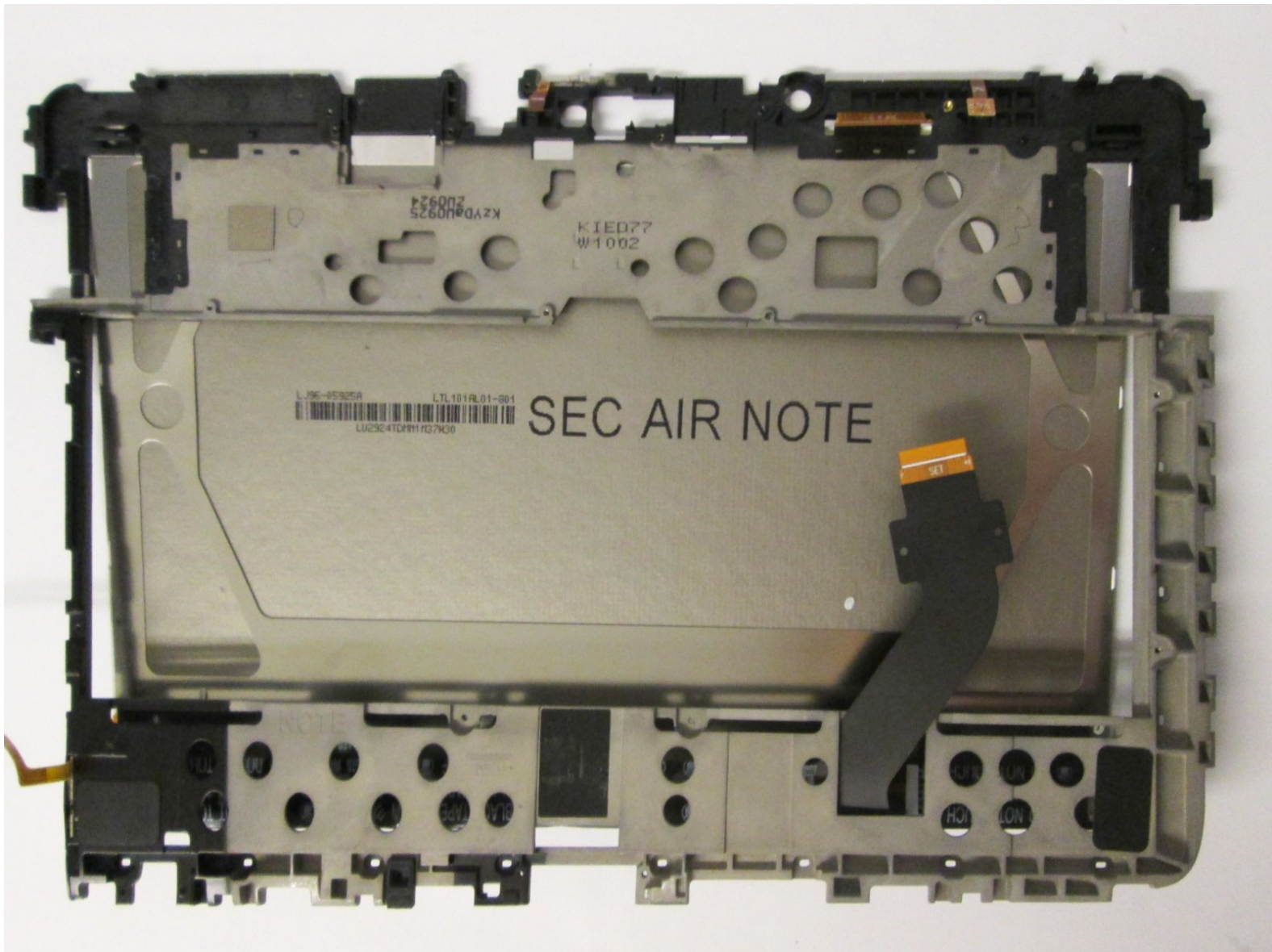




Samsung Galaxy Note 10.1 LCD Replacement

This guide hopes to provide the process of replacing the LCD screen

Written By: Tyler Salomone





TOOLS:

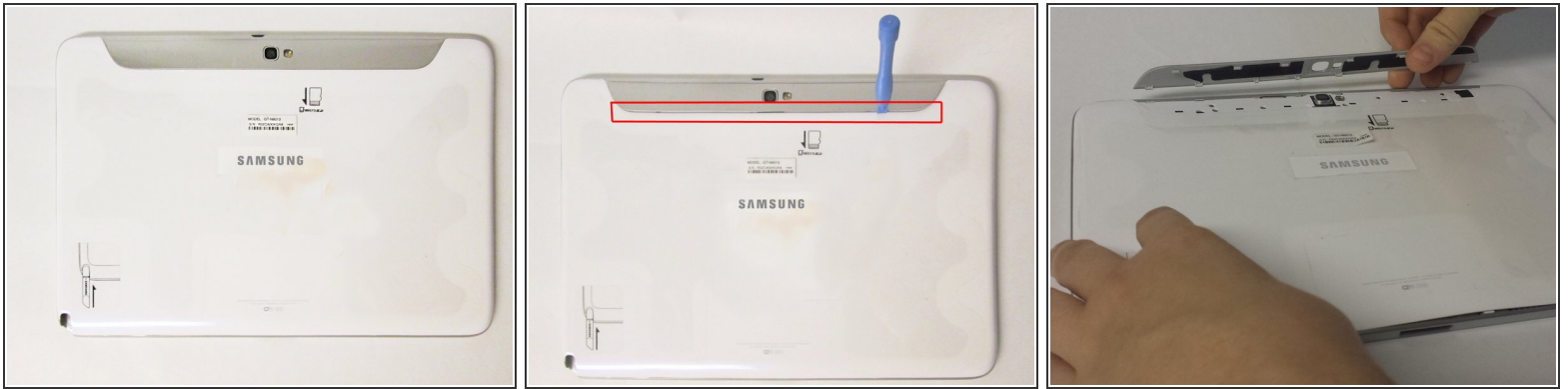
- [iFixit Opening Tools](#) (1)
- [Phillips #00 Screwdriver](#) (1)



PARTS:

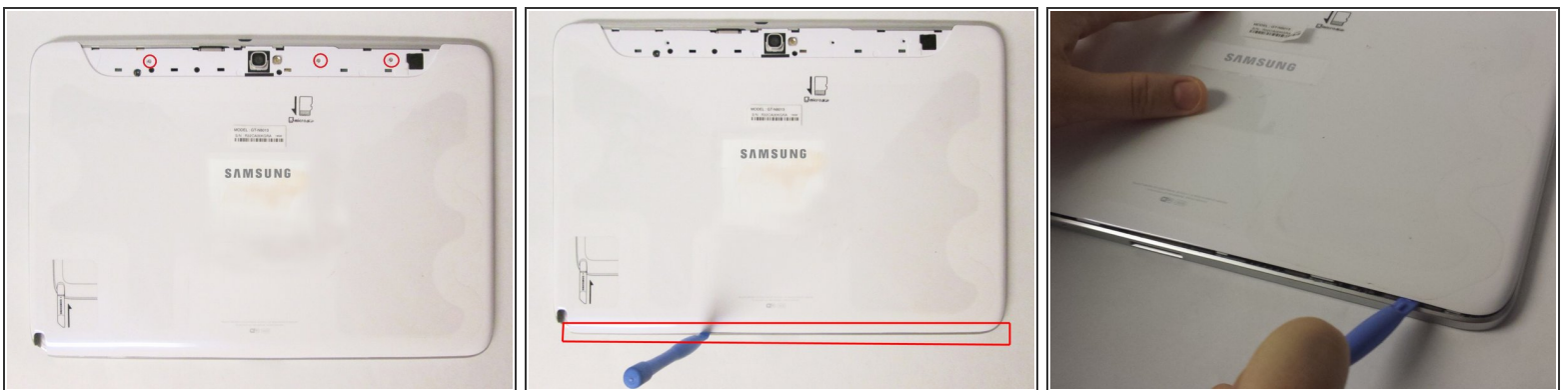
- [Galaxy Note 10.1 \(2012, Wi-Fi Only\) Screen](#) (1)
- [Galaxy Note 10.1 \(2012\) LCD](#) (1)
- [Galaxy Note 10.1 \(2012, Wi-Fi\) Motherboard](#) (1)
- [Galaxy Note 10.1 \(2012\) Front Camera](#) (1)
- [Galaxy Note 10.1 \(2012\) Headphone Jack](#) (1)
- [Galaxy Note 10.1 \(2012\) Charging Port](#) (1)
- [Galaxy Note 10.1 \(2012\) Volume Button Board](#) (1)

Step 1 — Removing the Top Piece



- This is the back of the device and where you will begin to take it apart.
- It is necessary to remove the silver piece covering the camera first before removing the bigger back piece.
- Use the plastic opening tools to pry along the indicated box.
- Lift up the silver piece to reveal the rest of the back cover.

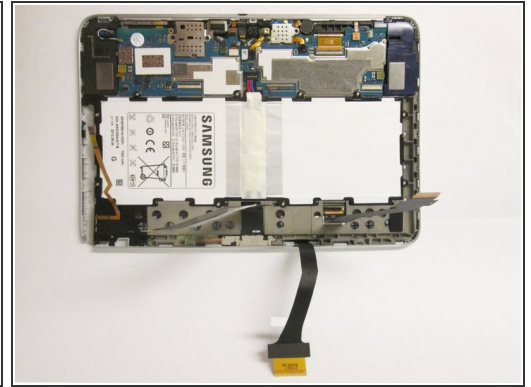
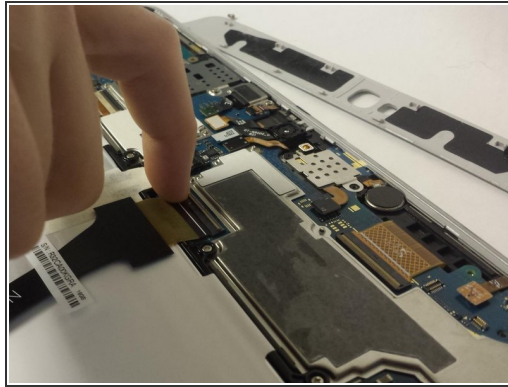
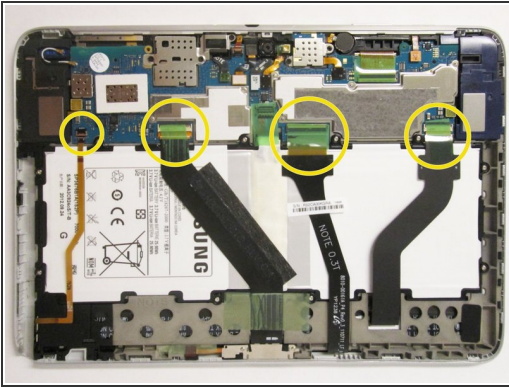
Step 2 — Removing the Back Cover



- Unscrew the three 5 mm screws indicated by the red circles with the Philips #00 screwdriver.
- Using the plastic opening tools pry along the bottom of the device, moving to the sides of the cover to the top.
- Remove the back cover.

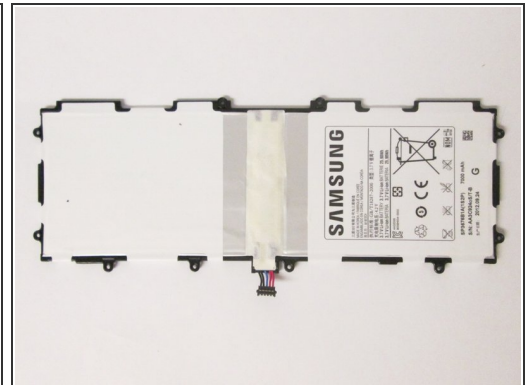
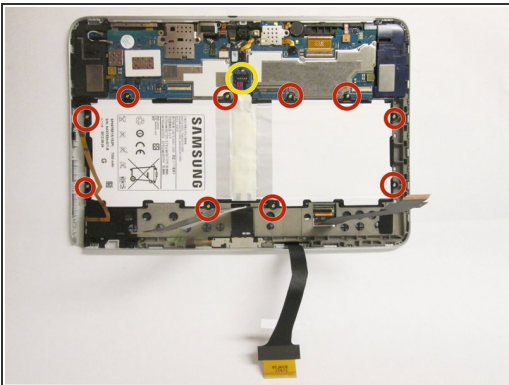
⚠ At this point use anti-static gloves or do **NOT** take it apart on carpet.

Step 3 — Removing components covering battery



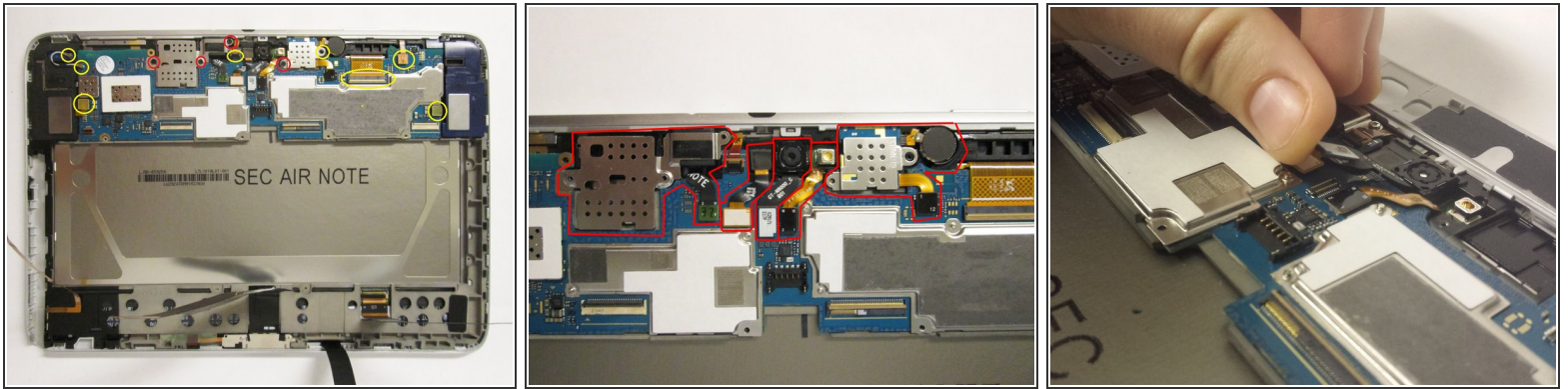
- Carefully remove all of the ribbons that connect over the battery from the locations indicated by the yellow circles.

Step 4 — Removing the Battery



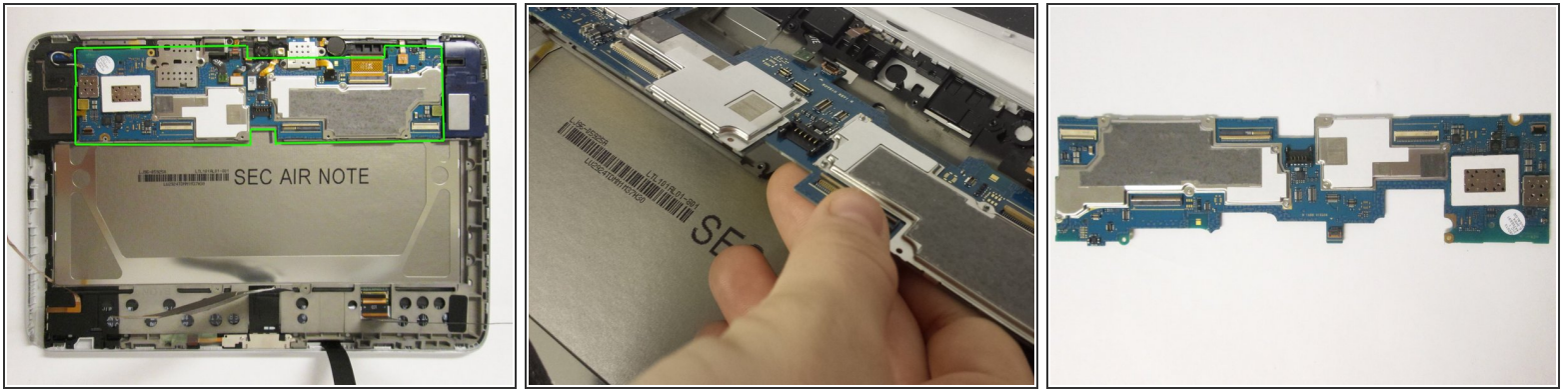
- Remove all of the 3 mm screws indicated by a red circle with the #00 Philips screwdriver.
- Disconnect the battery from the location indicated by a yellow circle
- Now you may remove the battery.

Step 5 — Removing the Components Around the Motherboard



- From the first photo:
 - Remove all the components marked by yellow circles
 - Unscrew all the 3 mm and 2 mm screws marked by the red circles with the #00 Philips screwdriver.
 - From the second photo:
 - Starting with the motherboard connectors, remove all the components marked in red.
- ⚠ Please place all components removed after this point in a static-free area or in anti-static bags.
- ⓘ Please note that you can only remove the ribbon attached to the headphone jack and the metal covering it on the far left. Do not attempt to remove the whole piece at this time.

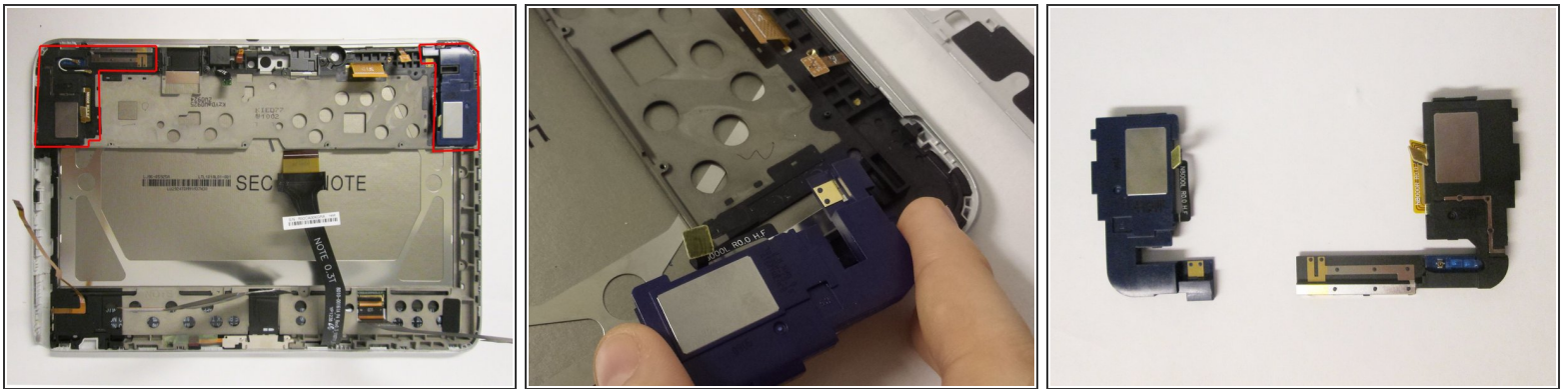
Step 6 — Removing the Motherboard



- Once you have removed all the components connected to the motherboard, gently lift up on the area surrounding the green box and remove your motherboard.

☑ Please place the motherboard in a static-free area or in anti-static bags.

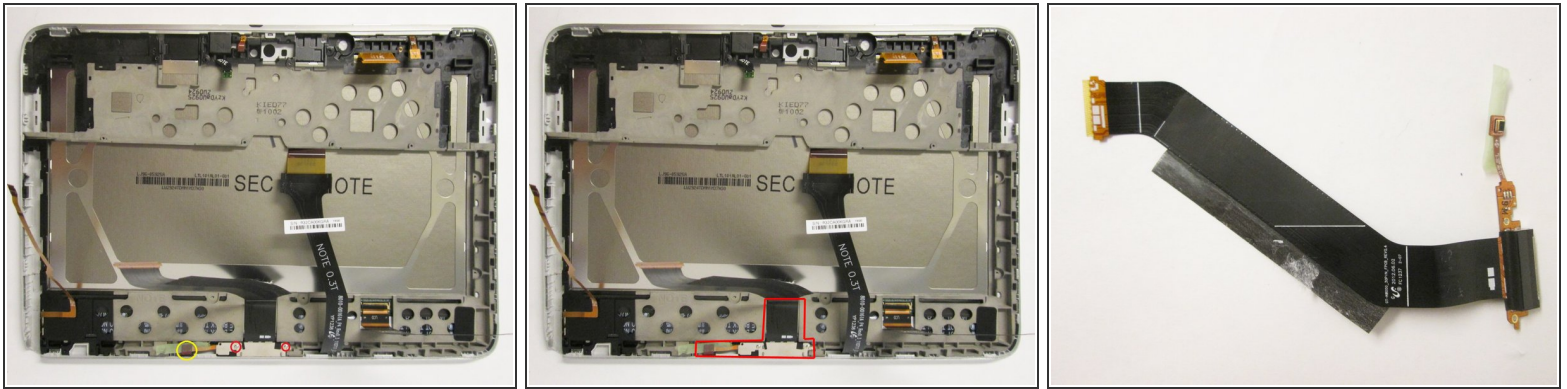
Step 7 — Removing the Loudspeaker Modules



- Apply pressure to the locations boxed in red to remove the loudspeaker modules.

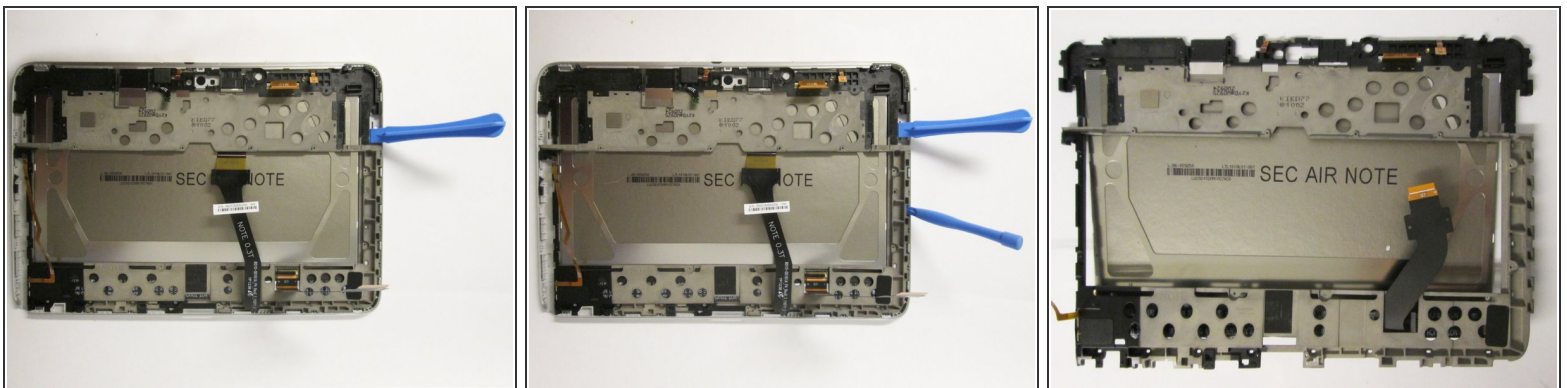
☑ Please place the loudspeakers in a static-free area or in anti-static bags.

Step 8 — Removing the Charging Port



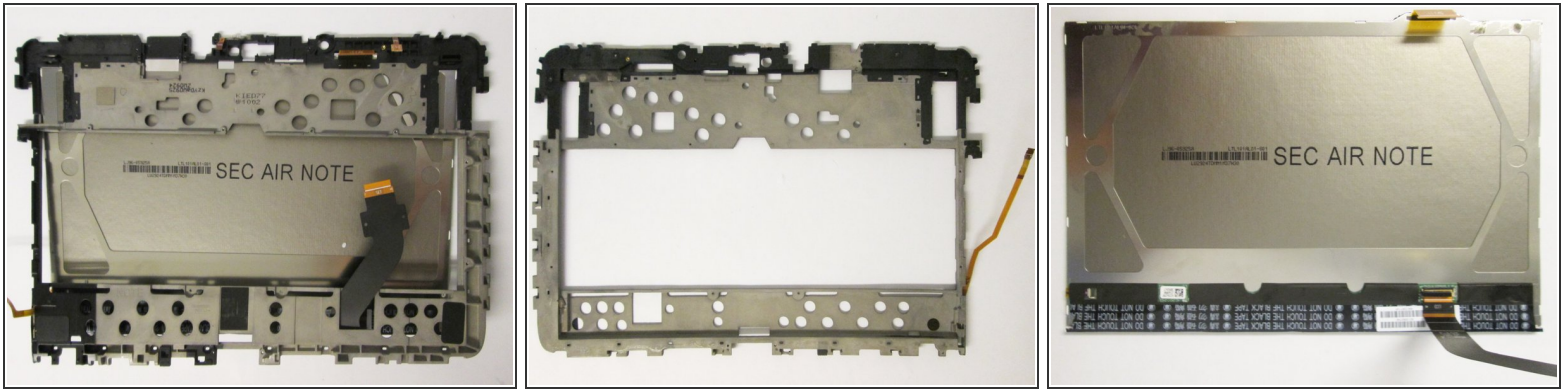
- From the first photo:
 - Unscrew the 2 mm screws marked by red circles with the #00 Philips screwdriver.
 - Be sure to lift the tape marked by the yellow circle from the frame.
 - Gently pry the ribbon from the frame and lift the charging port from the frame.
- ☑ Please place the charging port in a static-free area or in anti-static bags.

Step 9 — Prying the LCD from the Digitizer



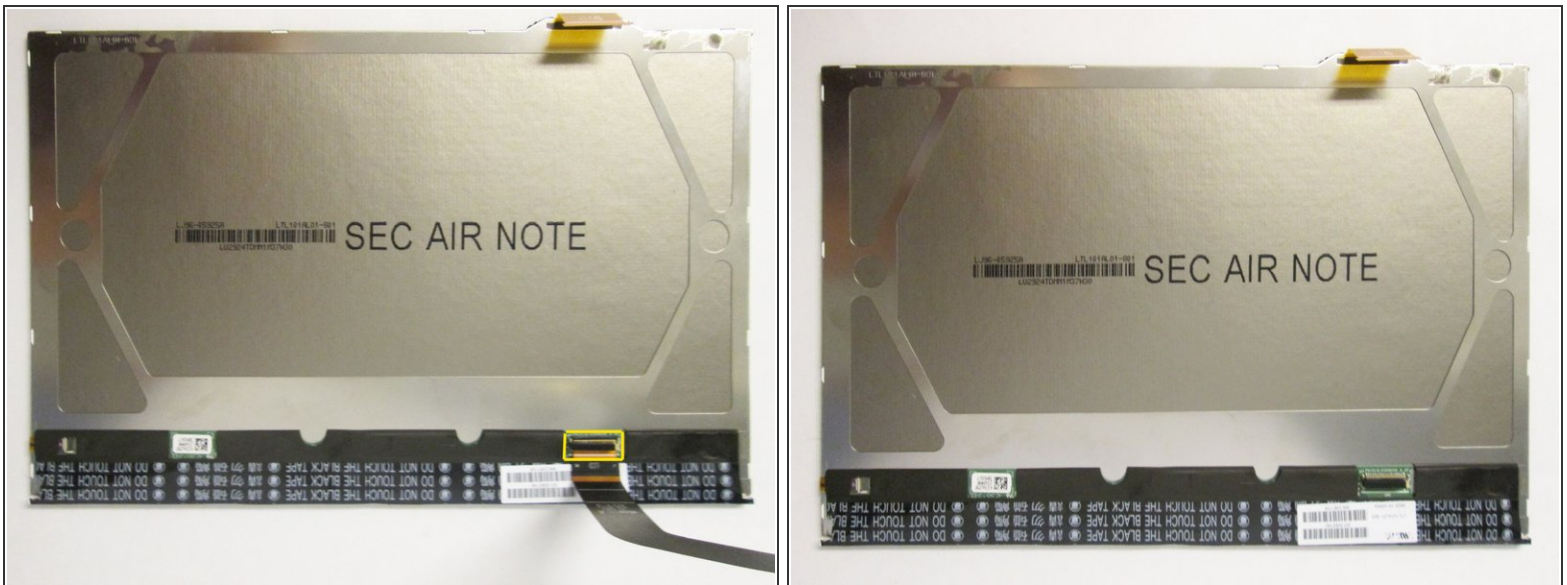
- Starting from the under the right speaker casing, use one plastic prying tool to start lifting up on the LCD frame.
- Use two of the plastic prying tools, one for support and the other for prying, to completely separate the LCD casing from the digitizer frame.

Step 10 — Removing the LCD from Its Frame



- Gently tear the LCD from its frame by lifting it from the tape connecting the two.

Step 11 — Replacing the Screen



- Remove the ribbon indicated by the yellow box and place it on your replacement LCD screen.

To reassemble your device, follow these instructions in reverse order.