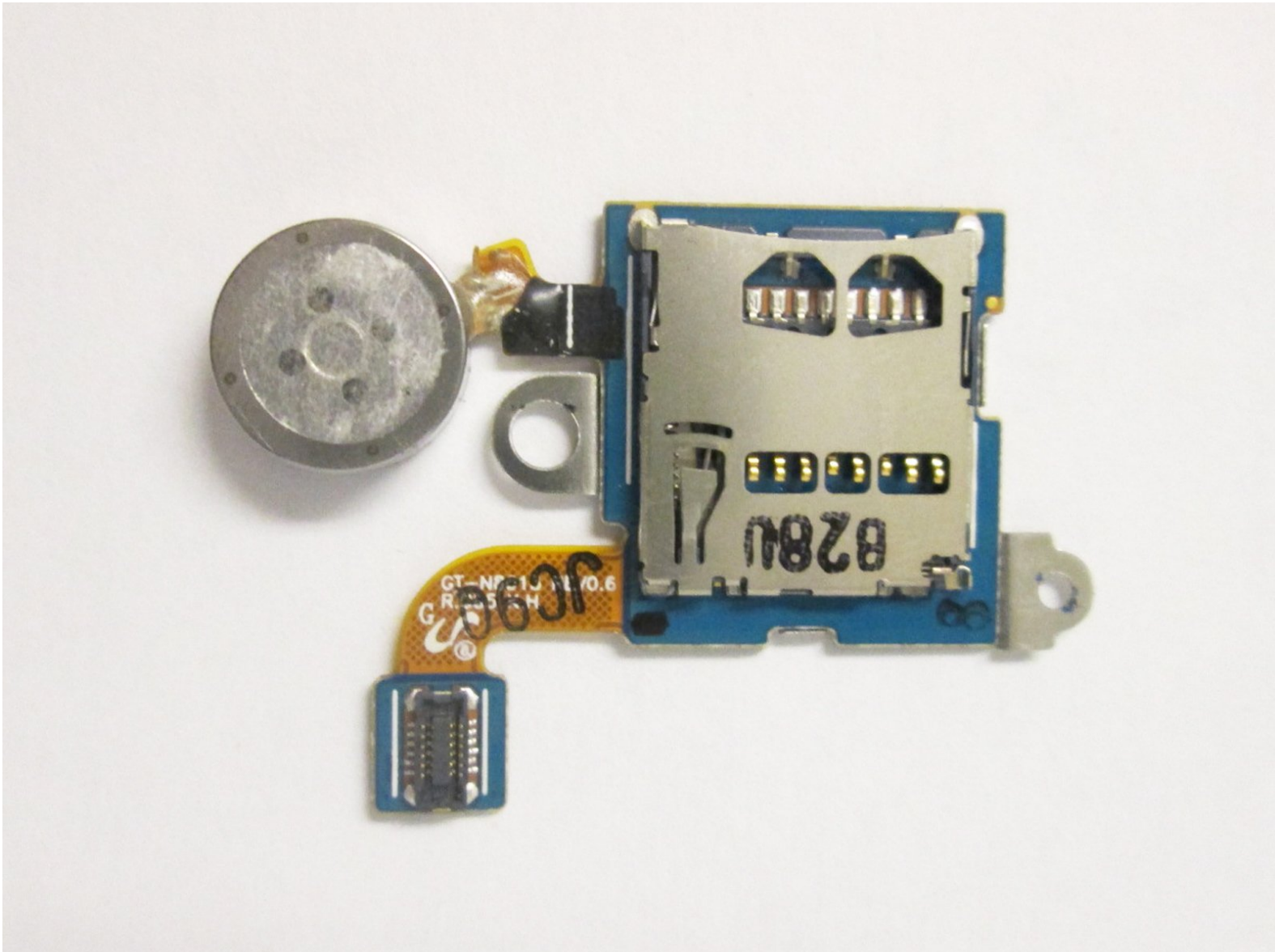




# Samsung Galaxy Note 10.1 microSD Port Replacement

This guide hopes to provide the process of replacing the microSD module.

Written By: Tyler Salomone





## TOOLS:

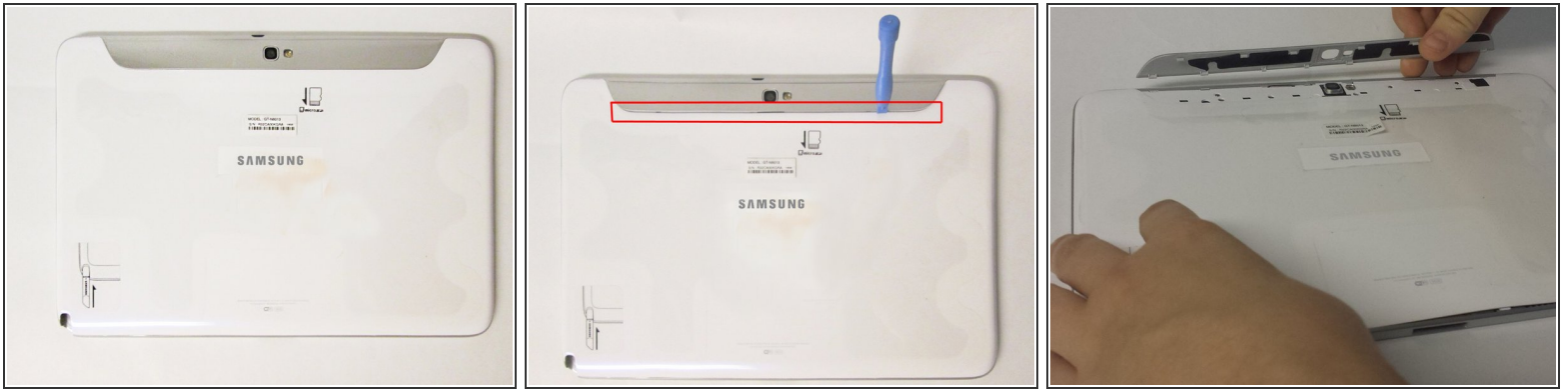
- [Phillips #00 Screwdriver](#) (1)
- [iFixit Opening Tools](#) (1)



## PARTS:

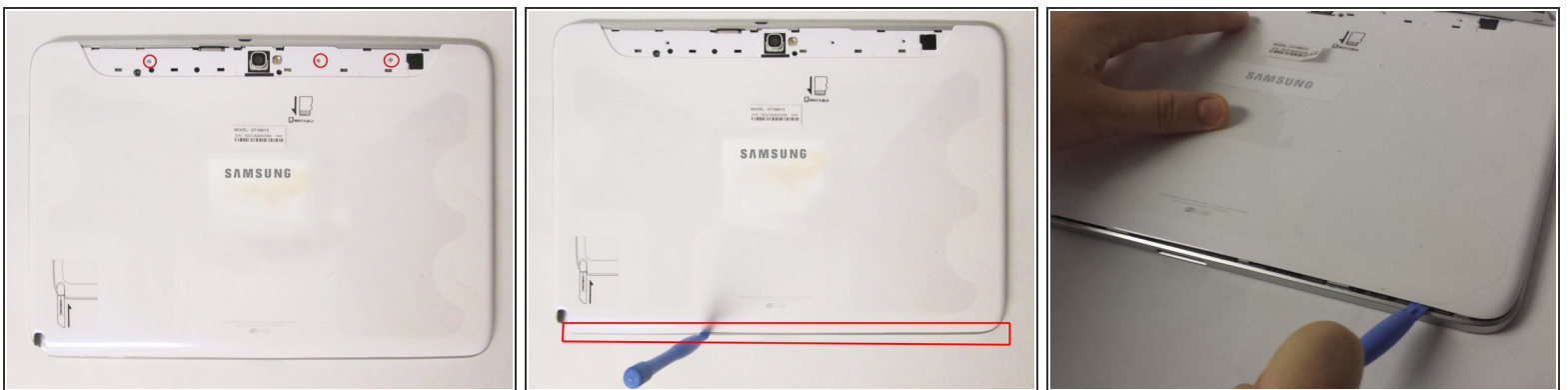
- [Galaxy Note 10.1 \(2012\) Vibrator Assembly](#) (1)

## Step 1 — Removing the Top Piece



- This is the back of the device and where you will begin to take it apart
- It is necessary to remove the silver piece covering the camera first before removing the bigger back piece.
- Use the plastic opening tools to pry along the indicated box.
- Lift up the silver piece to reveal the rest of the back cover.

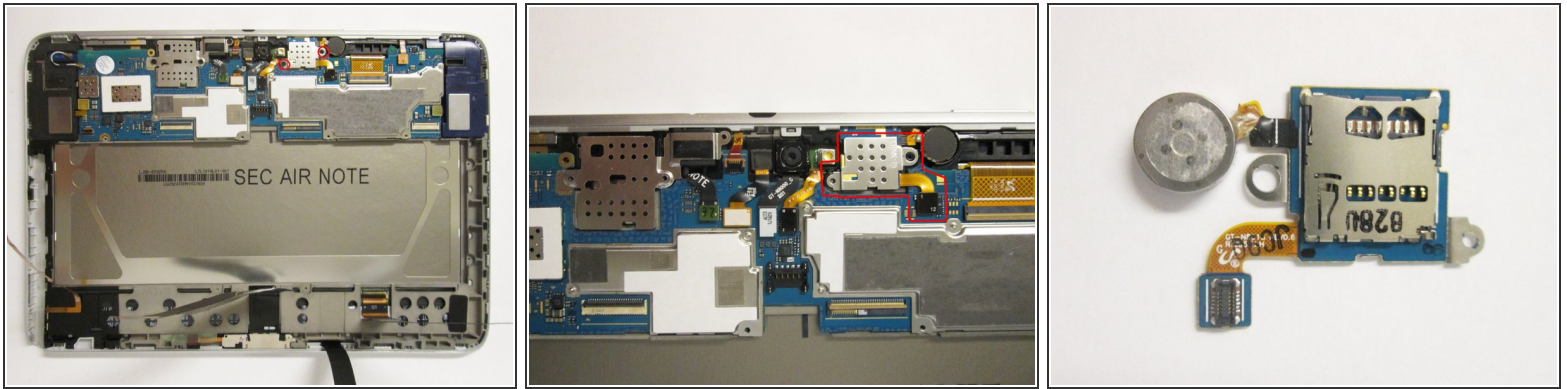
## Step 2 — Removing the Back Cover



- Unscrew the three 5 mm screws indicated by the red circles with the Philips #00 screwdriver.
- Using the plastic opening tools pry along the bottom of the device, moving to the sides of the cover to the top.
- Remove the back cover.

⚠ At this point use anti-static gloves or do **NOT** take it apart on carpet.

### Step 3 — Removing the microSD Port



- Unscrew the two 2 mm screws indicated by the red circles with the #00 Philips Screwdriver.
- Starting with the black motherboard connector, remove the module indicated by the red box in the second picture.
- Replace the microSD port with a similar model.

To reassemble your device, follow these instructions in reverse order.