



# Samsung Galaxy Note 8 Display Replacement

This guide shows you how to replace a broken or defective display on the Samsung Galaxy Note8.

Written By: Dominik Schnabelrauch



# INTRODUCTION

Use this guide to replace a cracked or broken display on your Samsung Galaxy Note8.

**Before disassembling your phone, discharge the battery below 25%. The battery can catch fire and/or explode if accidentally punctured, but the chances of that happening are much lower if discharged.**

**Note:** This guide instructs you to replace only the display while leaving the original frame, logic board, and battery in place. However, some replacement screens for this phone come pre-installed in a new frame (a.k.a. chassis), which requires a very different procedure—transplanting your phone's internals and installing a new battery. Make sure you have the correct part before starting this guide.

This guide involves removing the rear glass cover, you will need replacement adhesive to reattach the back cover to the phone. If your replacement display does not come with adhesive, you will need to use tape to secure it. Opening the Samsung Galaxy Note8 will **damage the waterproof sealing** on the device. If you do not replace the adhesive seals, your phone will **function normally**, but will **lose its water-protection**.

**If the frame is damaged or bent**, it's important to replace it, or else the new screen may not mount correctly and can suffer damage from uneven pressure.

The process of separating the display from the frame usually destroys the display, so don't follow this guide unless you intend to replace the display.



## TOOLS:

- [iOpener](#) (1)
- [Suction Handle](#) (1)
- [iFixit Opening Picks set of 6](#) (1)
- [Tweezers](#) (1)
- [Phillips #00 Screwdriver](#) (1)
- [Spudger](#) (1)



## PARTS:

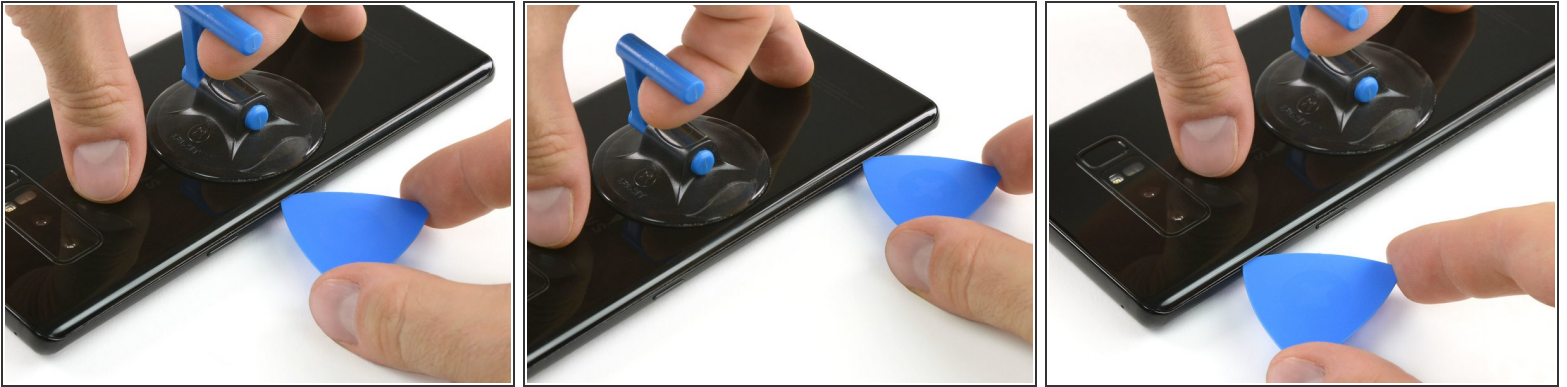
- [Galaxy Note8 Rear Cover Adhesive](#) (1)

## Step 1 — Back Cover



- Switch off your phone.
- [Prepare an iOpener](#) for softening the adhesive on the back of the Note8.
- Apply the iOpener on the back of the Note8 along the side with the power button.

## Step 2



- Use a suction handle to lift the back cover and an opening pick to get in the gap.
  - ❗ Since the back cover is also slightly curved at the edges you want to insert the opening pick at a lower angle from underneath.
- Start at the middle of the side and cut the adhesive while pulling up with the suction handle.
  - ⚠ Be careful not to lever the opening pick too much to avoid breaking the back cover. Rather pull with the suction handle and use the pick for cutting the adhesive.
- Move the pick towards the bottom corner and leave it there to keep the adhesive from resealing to the case.
- Use another pick and move it to the top corner.
  - ❗ If it's getting harder to move the pick you might need to reheat the iOpener and apply it to the back cover again.

### Step 3



- Again take another opening pick and carefully move it around the corner and along the top edge.
- Reheat with an iOpener if necessary.
- Leave the pick at the top right corner to keep the adhesive from resealing.

### Step 4



- Rotate the device and start to separate the adhesive at the bottom with another opening pick.
- Leave the pick at the bottom right corner to keep the adhesive from resealing.



## Step 5



- When the adhesive has been separated on all three sides properly you will be able to slowly lift the back cover.
  - ⚠ Don't force it open. Use an iOpener to again soften the adhesive if the back cover won't come off or starts to bend.
- Pay attention to the fingerprint sensor connector when flipping the back cover open. You might need to disconnect it as described in the next step.

## Step 6



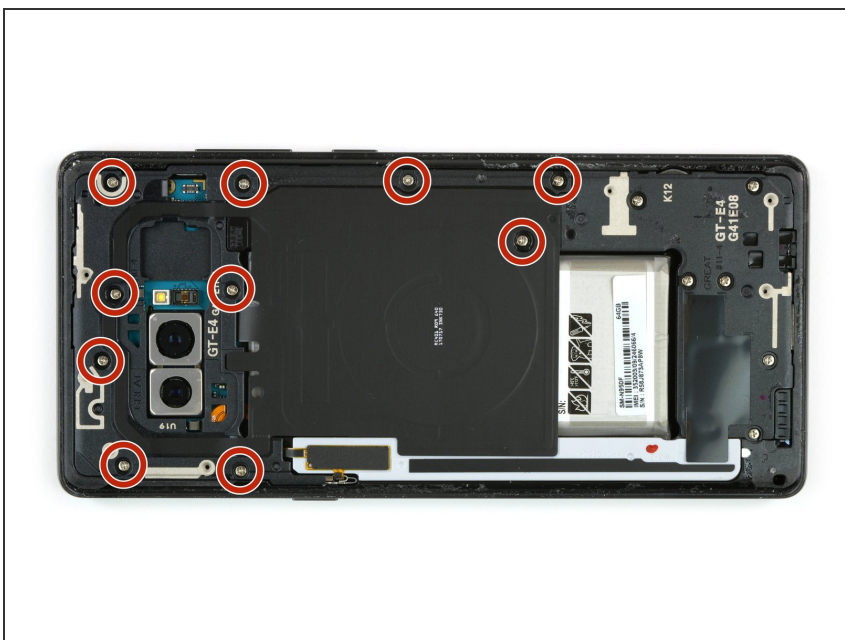
- Use a pair of tweezers to disconnect the fingerprint sensor.
  - ⓘ The connector might already have come off when flipping the back cover open.

## Step 7



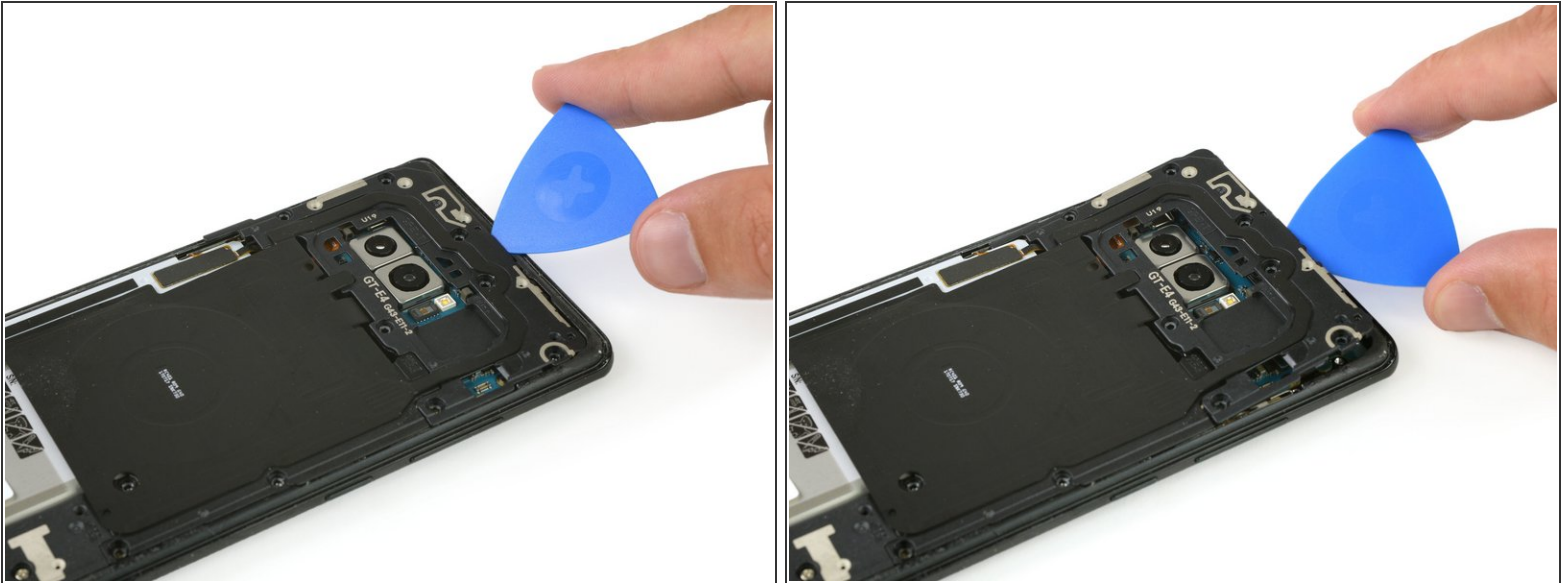
- Remove the back cover.
- ★ To prepare for the reassembly remove any remaining adhesive from the phone, and clean the glued areas with isopropyl alcohol and a lint-free cloth.

## Step 8 — NFC Antenna and Charging Coil Assembly



- Remove the ten Phillips #00 screws.

## Step 9



- Use an opening pick at the top edge to get between the NFC antenna and charging coil assembly and the case.
- Lever the top of the assembly out of the case.

## Step 10



- Carefully pull up the complete charging coil and NFC antenna assembly.
- ⚠ The bottom left part of the assembly is slightly glued down to the frame.



## Step 11 — Battery Disconnect



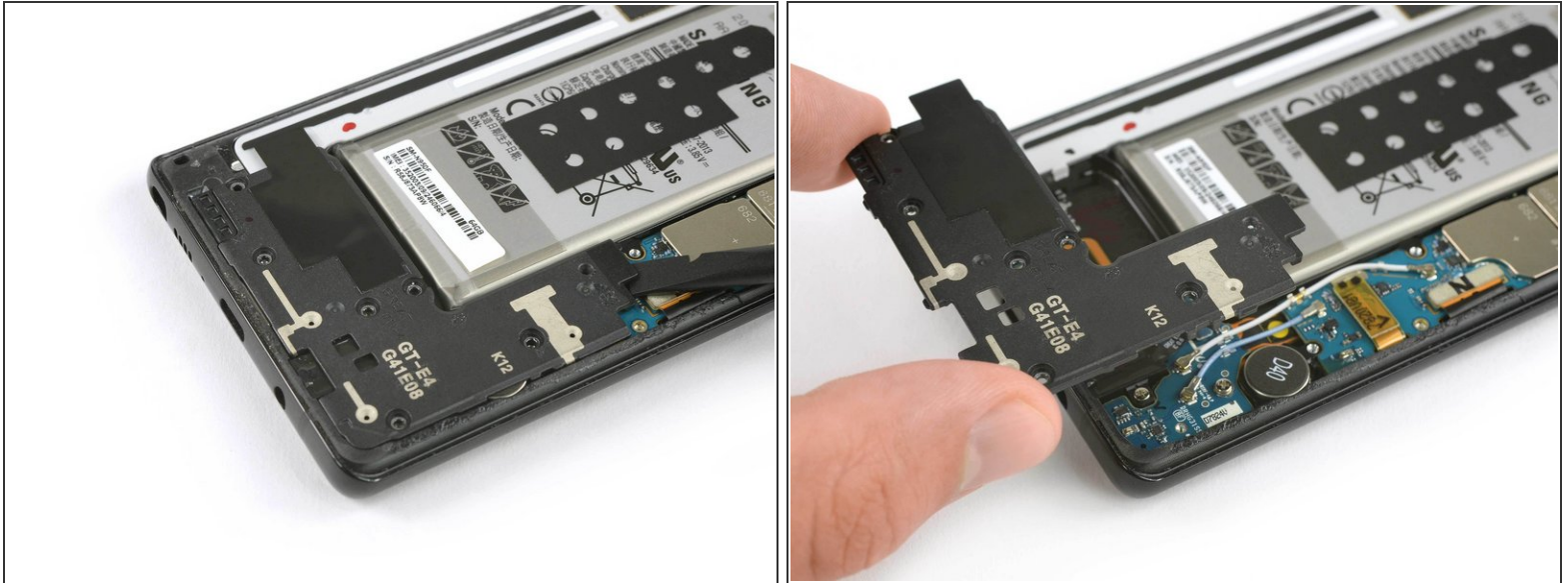
- Use the flat end of a spudger to disconnect the battery connector.

## Step 12 — Display Replacement



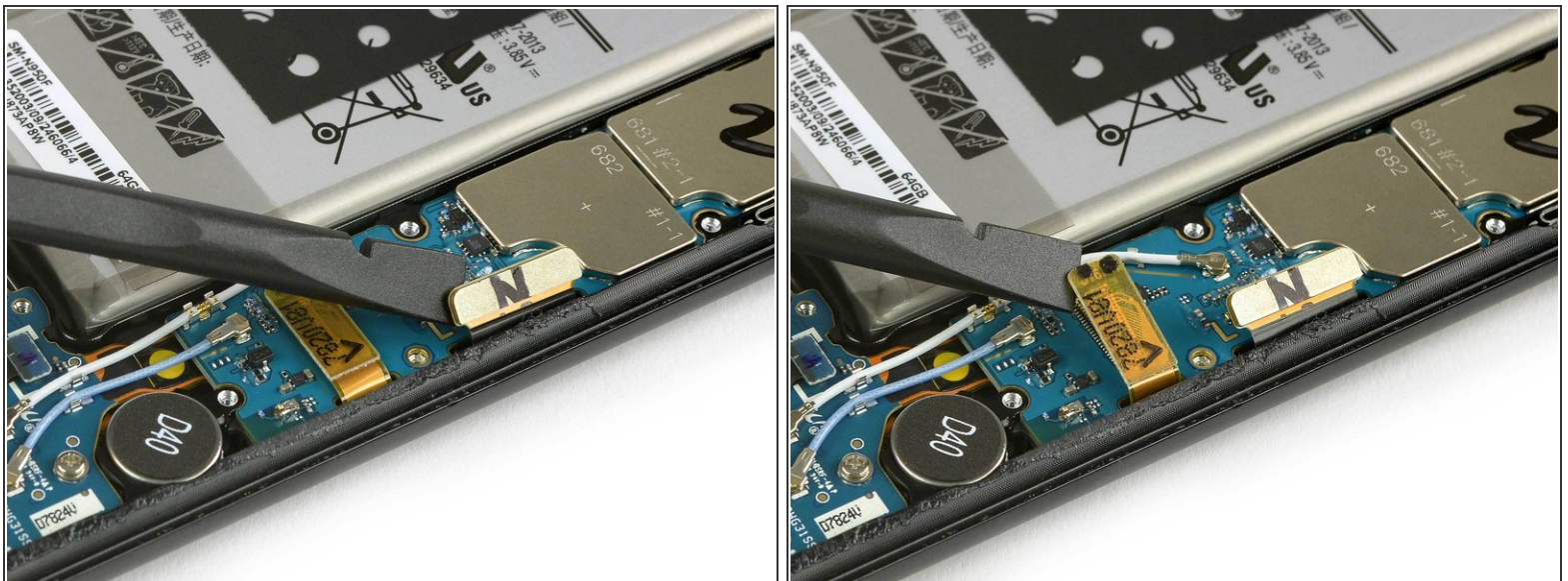
- Remove the six Phillips #00 screws on the loudspeaker assembly at the bottom of the phone.

## Step 13



- Use the flat end of a spudger to pry up the loudspeaker assembly.
  - ⚠ You will be prying above the mainboard and the antenna cable. Pry carefully to avoid damaging any close components.
- Remove the loudspeaker assembly.

## Step 14



- Use the flat end of a spudger to disconnect both the display and the touchscreen cables.

This document was generated on 2019-11-16 03:43:55 AM (MST).

## Step 15



- [Prepare an iOpener](#) and apply it to the display for at least two minutes to loosen the adhesive beneath.
- ⓘ You may need to reheat and reapply the iOpener several times to get the phone warm enough. Follow the iOpener instructions to avoid overheating.
- ⓘ If your display glass is cracked, keep further breakage contained and prevent bodily harm during your repair by taping over the glass.
- Lay overlapping strips of clear packing tape over the Note8's display until the whole face is covered.
- This will keep glass shards contained and provide structural integrity when prying and lifting the display.
- ⚠ Wear safety glasses to protect your eyes from any glass shaken free during the repair.



## Step 16



- Once the screen is warm to the touch, apply a suction cup to the lower edge of the phone.
  - If the phone's screen is cracked, the suction cup may not stick. Try [lifting it with strong tape](#), or superglue the suction cup in place and allow it to cure so you can proceed.
  - Lift on the suction cup, and insert a halberd spudger or an opening pick under the display assembly.
    - ⓘ Due to the curved glass, you will be pushing up, rather than inserting parallel to the plane of the phone.
  - Start to slide the halberd spudger/opening pick along the lower edge of the phone to cut the adhesive. Leave an opening pick at the corner to prevent the adhesive from resealing.
- ⚠ The screen's flex cable is located just below the midpoint on the side of the power button, and may interfere with your cutting tool.
- Continue to slide the halberd spudger/opening pick along the side of the phone and insert another opening pick.

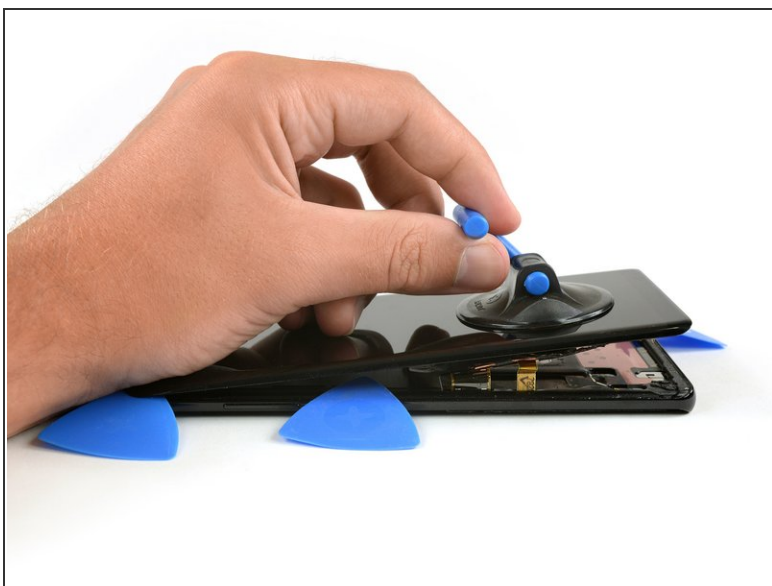


## Step 17



- Slide the halberd spudger/opening pick to the upper corner of the phone to cut the adhesive and insert and opening pick to prevent the adhesive from sticking to the display.
  - ⓘ Go slowly so that the tool doesn't slip out of the seam. If cutting becomes too difficult, [reheat](#) and reapply the iOpener.
- Repeat the previous heating and cutting procedure for the remaining sides of the phone. Insert an opening pick on every corner and on both sides of the Note8.
  - ⚠ Use a little extra caution when prying near the top edge so as not to damage the front-facing sensors and earpiece speaker.

## Step 18



- ⚠ Both, the flex cable of the touchscreen and the display cable are threaded through the mid frame. The openings in the midframe are rather small and it can be a bit of a fumbling to pull them out.
- Once you cut the adhesive on all sides of the phone you can use the small suction cup to slowly lift it upwards.

## Step 19



- ⚠ Before installing a new display, it's very important to remove all traces of the old adhesive from the frame, while taking special care to remove any small glass fragments in case your display was broken.
- Remove any remaining adhesive from the phone, and clean the glued areas with isopropyl alcohol (90+%) and a lint-free cloth.
- ⚠ If the frame is bent, or if any glue or glass remnants are left behind, the new display will not mount correctly and may be damaged. If necessary, replace the frame.

If possible, turn on your phone and test your repair before installing new adhesive and resealing the phone.

After reapplying adhesive, follow these instructions in reverse order to reassemble your device.

The best way to secure the new screen is with a sheet of custom-cut double-sided tape. Apply the tape to the back of the screen, then carefully feed the display cable through the frame. Align the screen and press it into place.