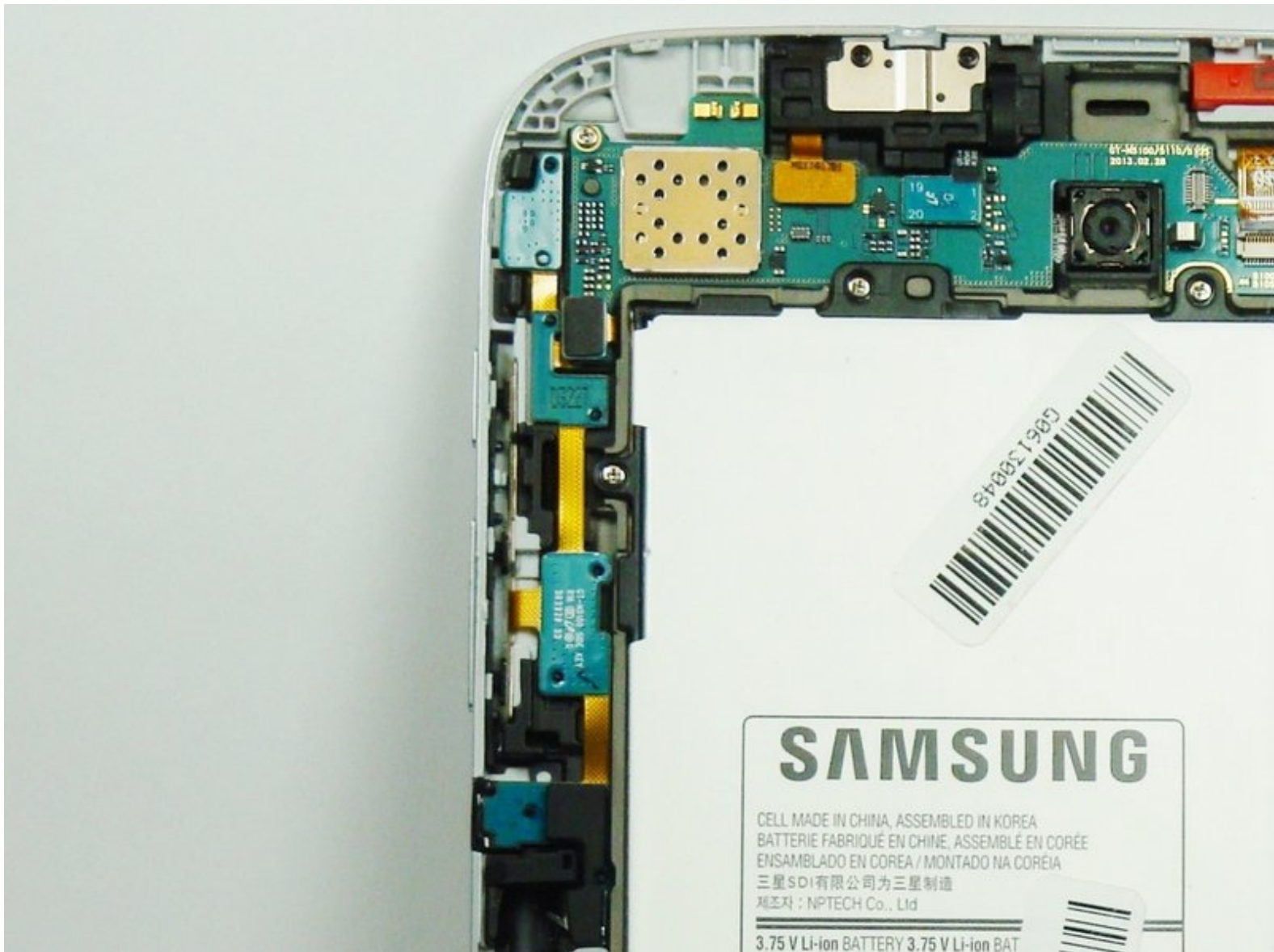




Samsung Galaxy Note 8.0 Power/Volume Buttons Replacement

You will be replacing the volume and power buttons for your device.

Written By: Joel



INTRODUCTION

The power and volume buttons are responsible for turning your tablet on or changing the volume of your tablet. If the tablet doesn't respond to pressing any of those buttons, it is likely that the buttons are jammed or worn out from use. In order to resolve such issues, you'll have to replace the strip that holds the power and volume buttons. This guide shows you how to replace that strip.



TOOLS:

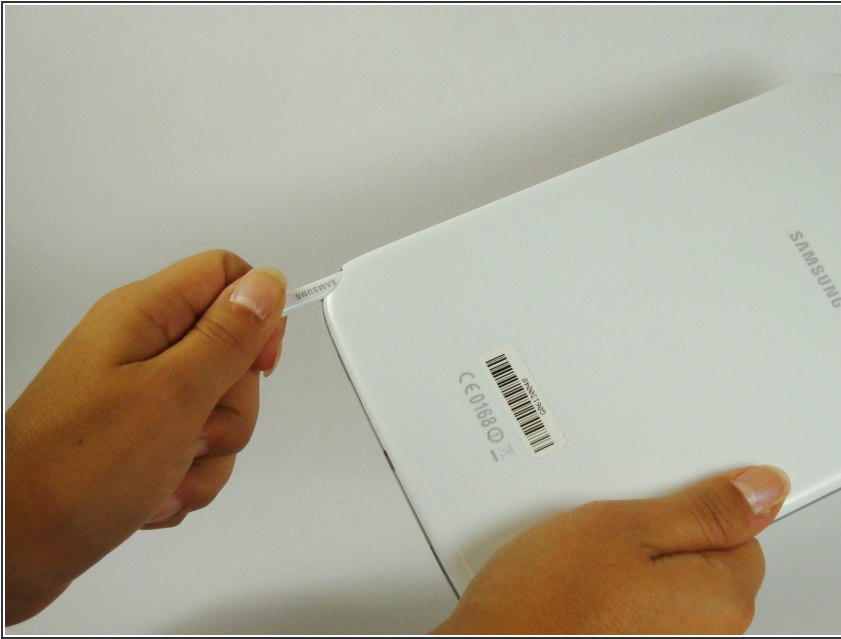
- [Phillips #00 Screwdriver](#) (1)
- [iFixit Opening Tools](#) (1)
- [Tweezers](#) (1)



PARTS:

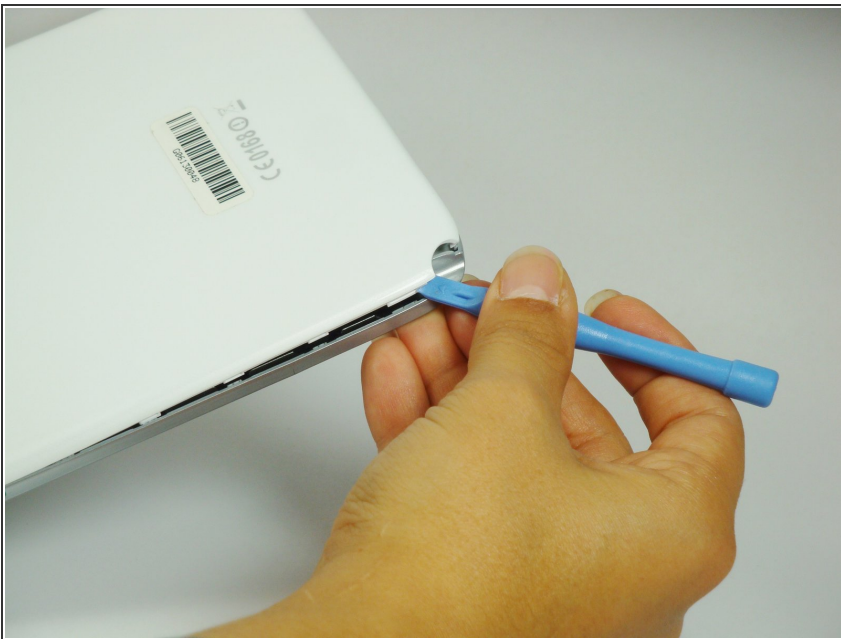
- [Galaxy Note 8.0 \(Wi-Fi Only\) Volume and Power Button Cable](#) (1)

Step 1 — Back Cover



- Remove the Samsung S-Pen stylus.
- Remove the micro SD storage card.

Step 2



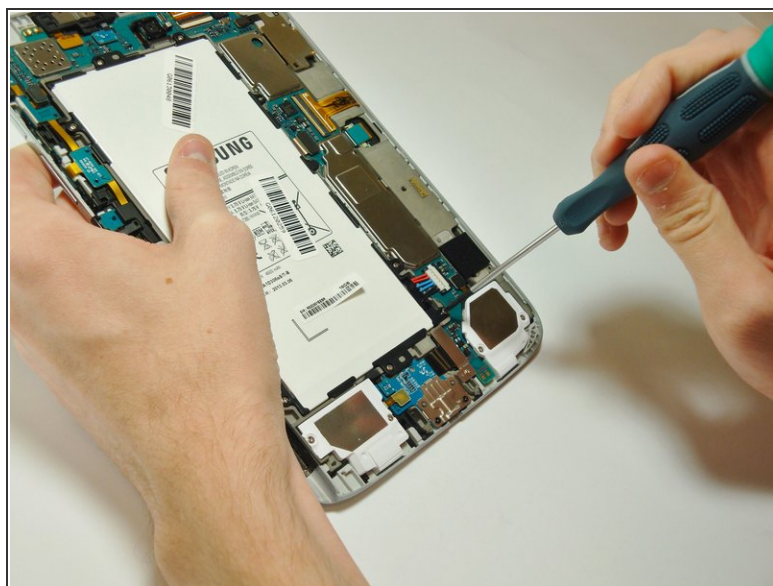
- Using the plastic opening tool, start where the S-pen was located and carefully pry up the corner.

Step 3



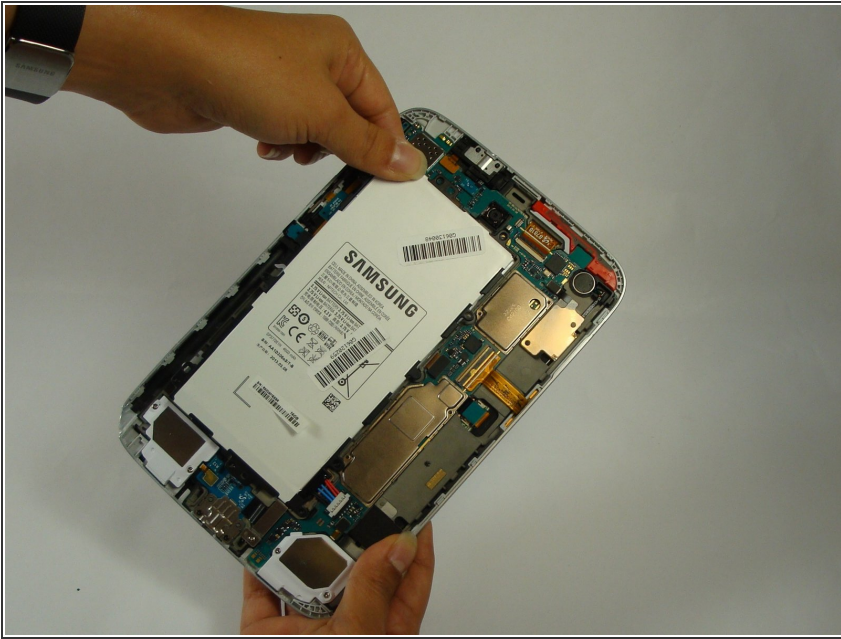
- Work your way around the entire device by carefully prying and sliding the plastic opening tool.
- ⓘ There are clips approximately 2cm apart. As you are removing the back cover you should hear the clips being dislocated from the tablet.

Step 4 — Battery



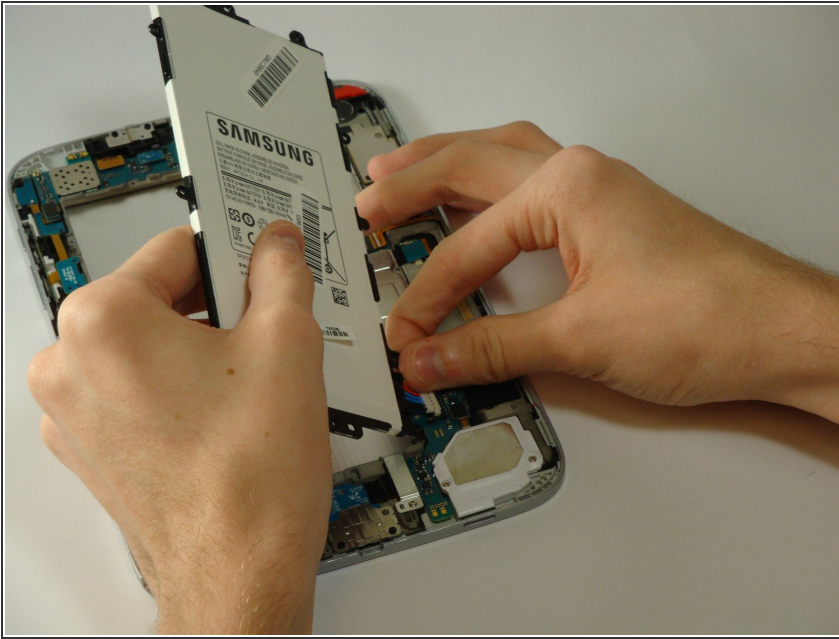
- Remove the 8 Phillips#00 3-mm screws holding the battery in place.

Step 5



- Lift the top left corner of the battery up by the black tab.

Step 6



- Gently grasp and lift up the white connector located at the bottom right corner of the battery. It is connected to the battery by two blue and two red wires.

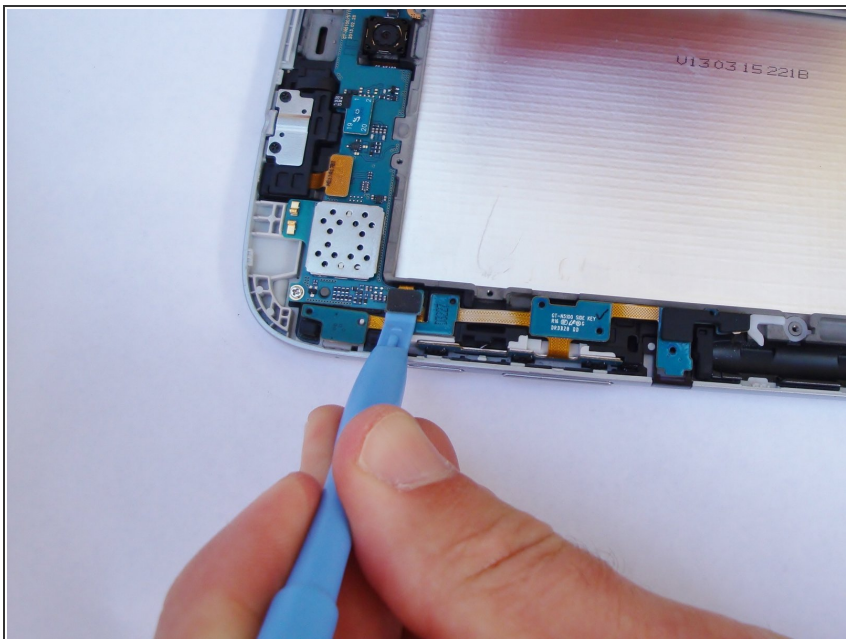
⚠ Do not yank the connector by the wires. If it does not disconnect easily, slide a plastic opening tool between the white connector and the board to lift the connector away from the board.

Step 7 — Power/Volume Buttons



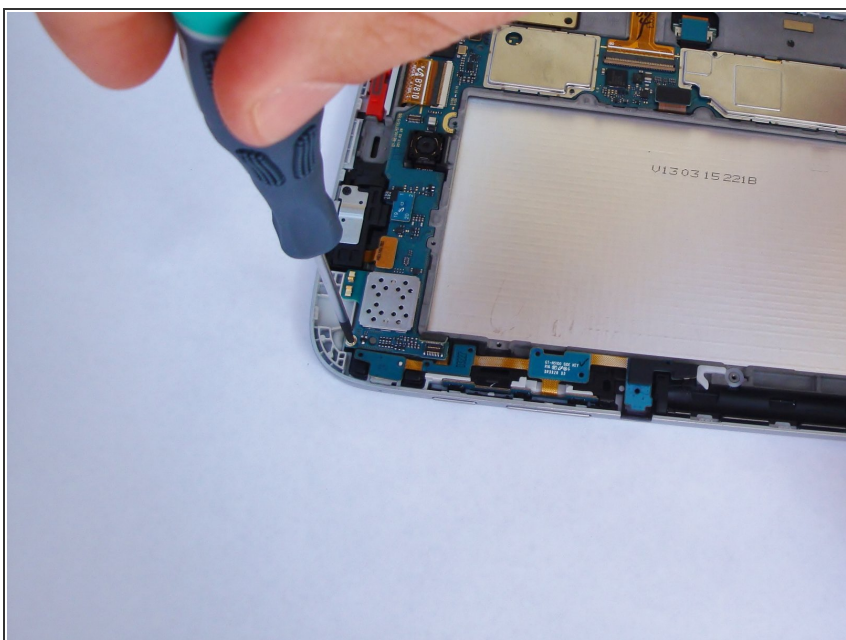
- The volume and power buttons are joined together on a common strip, so you are replacing both simultaneously.

Step 8



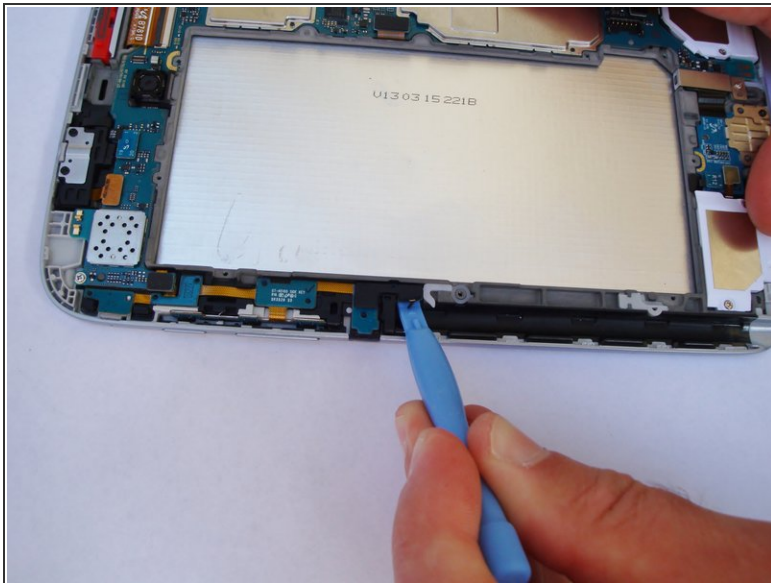
- Disconnect the black connector by pulling up using a plastic opening tool underneath the edge. This connection attaches the power/volume cable to the mother board.

Step 9



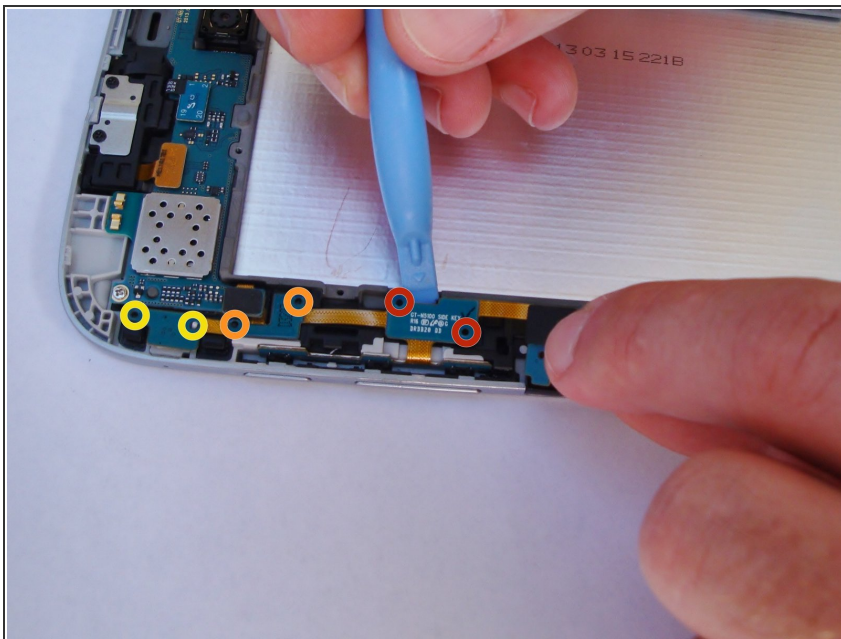
- Remove the 3-mm screw holding the upper left corner of the main board using a Phillips#00 screwdriver.

Step 10



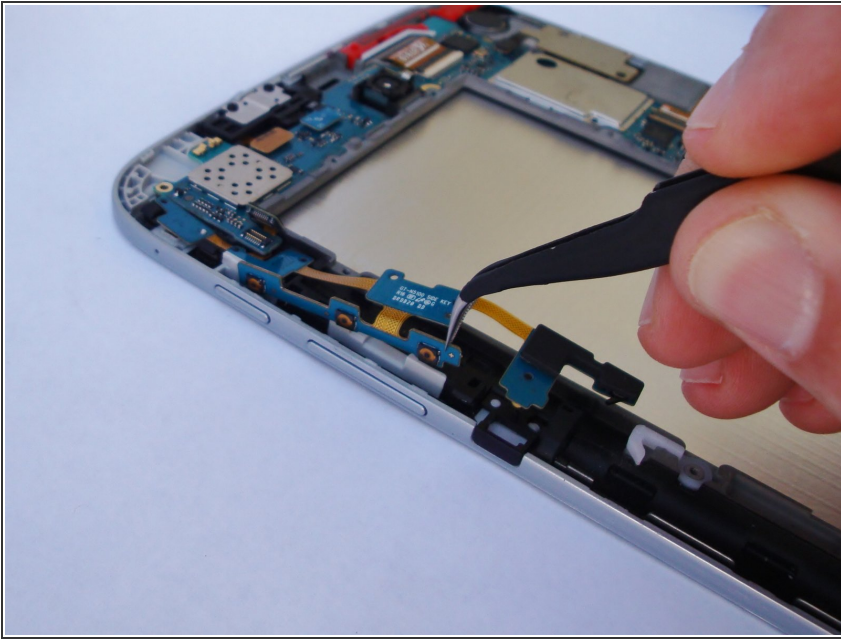
- Gently pry the lower edge of the cable off the plastic stud just above the stylus opening.

Step 11



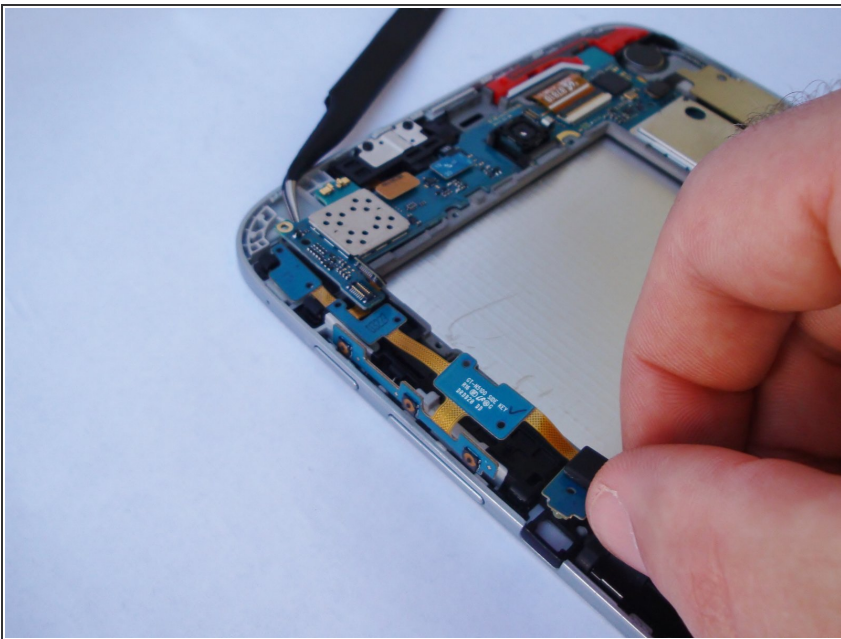
- Gently pry the middle of the cable up and off of the two plastic studs.
- Gently pry the part of the cable adjacent to the power button up and off the two plastics studs.
- Gently pry the upper part of the cable up and off the two plastic studs.

Step 12



- Using tweezers, pull the part of the cable that is located behind the volume buttons out of the slot.

Step 13



- Hold the corner of the motherboard up and carefully slide the cable out.

To reassemble your device, follow these instructions in reverse order.