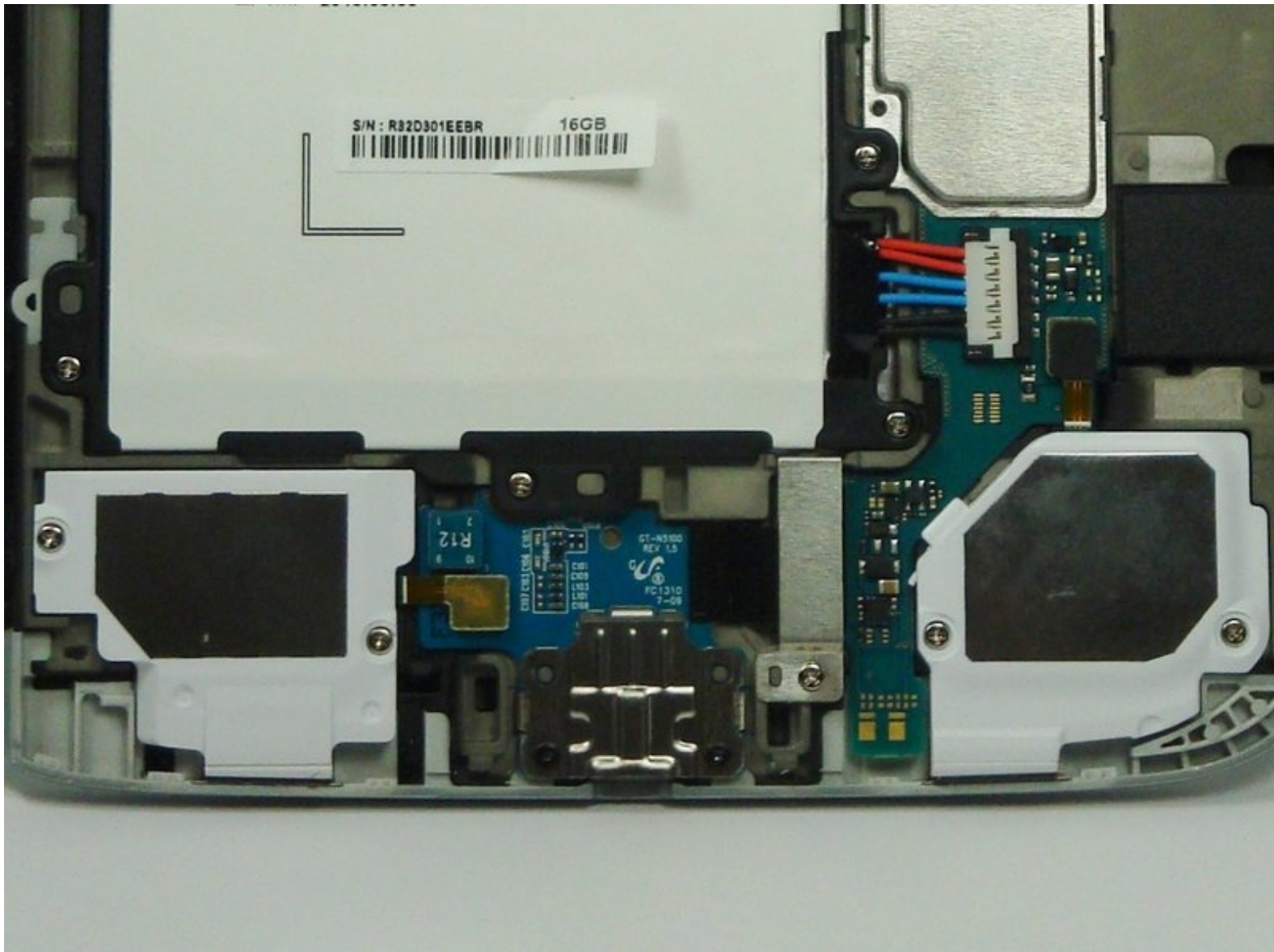




Samsung Galaxy Note 8.0 Speaker Replacement

You will be replacing the speakers in this device.

Written By: Joel



INTRODUCTION

The speakers are responsible for outputting the audio of the tablet, but the speakers may deteriorate overtime. This could result in poor sound quality or no sound outputting at all. If that occurs, the speakers must be replaced. This guide will walk you through replacing the speakers.



TOOLS:

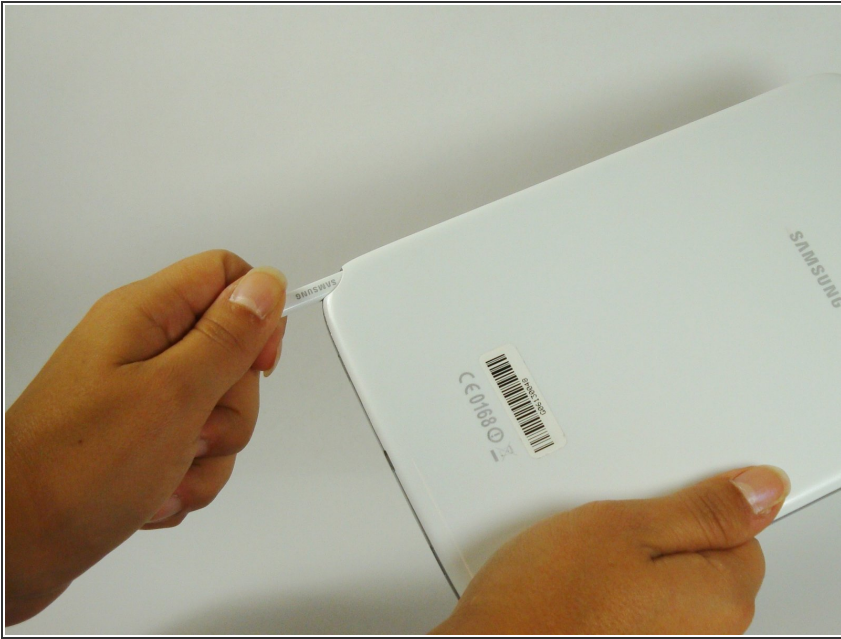
- [Phillips #00 Screwdriver](#) (1)
- [iFixit Opening Tools](#) (1)



PARTS:

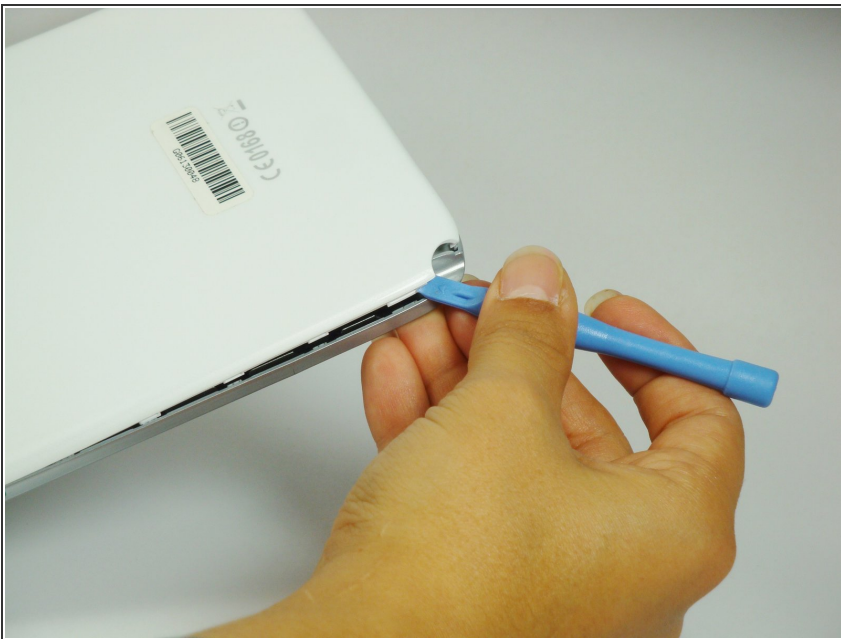
- [Galaxy Note 8.0 \(Wi-Fi Only\) Right Speaker](#) (1)
- [Galaxy Note 8.0 \(Wi-Fi Only\) Left Speaker](#) (1)

Step 1 — Back Cover



- Remove the Samsung S-Pen stylus.
- Remove the micro SD storage card.

Step 2



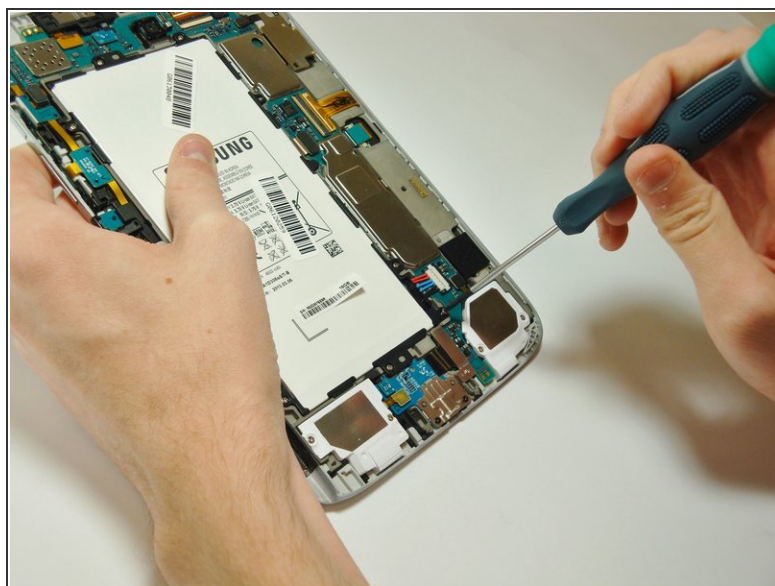
- Using the plastic opening tool, start where the S-pen was located and carefully pry up the corner.

Step 3



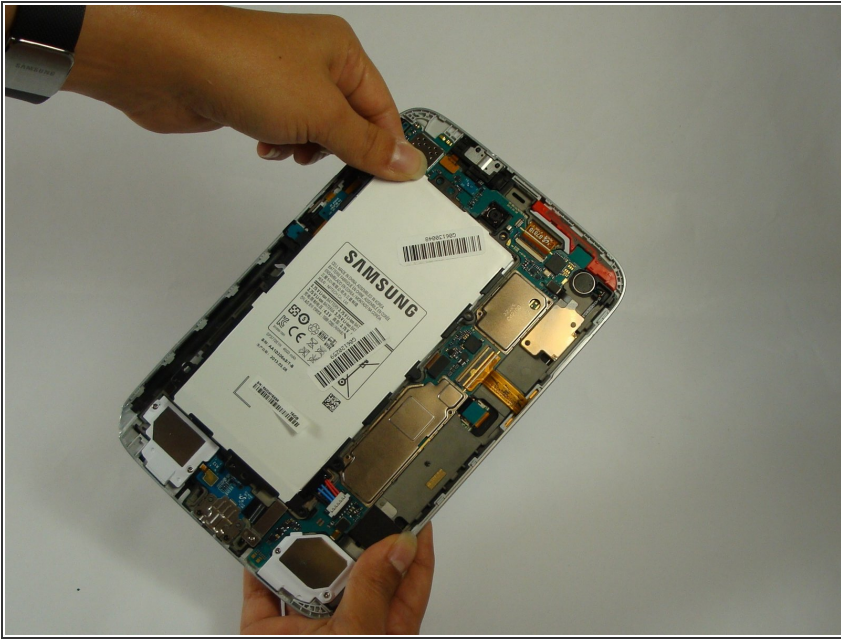
- Work your way around the entire device by carefully prying and sliding the plastic opening tool.
- ⓘ There are clips approximately 2cm apart. As you are removing the back cover you should hear the clips being dislocated from the tablet.

Step 4 — Battery



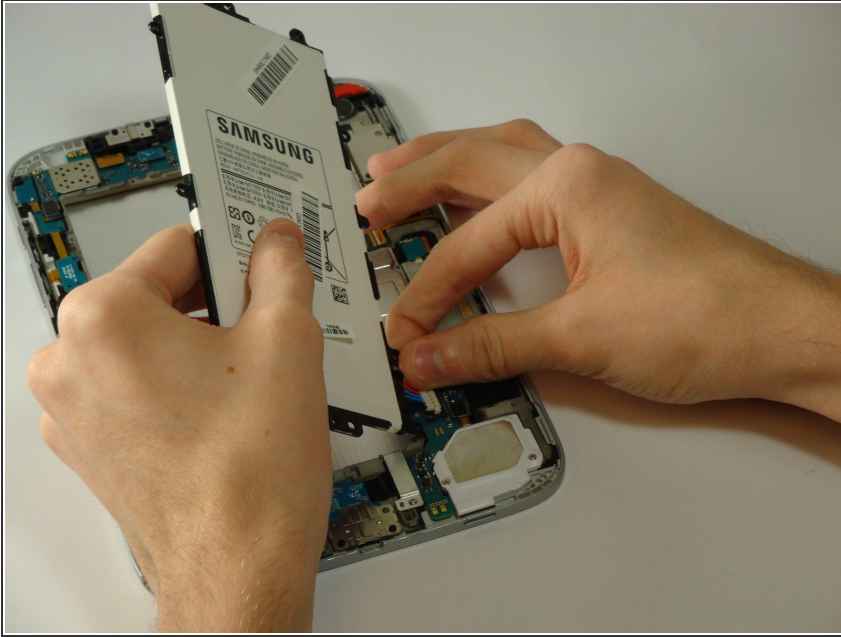
- Remove the 8 Phillips#00 3-mm screws holding the battery in place.

Step 5



- Lift the top left corner of the battery up by the black tab.

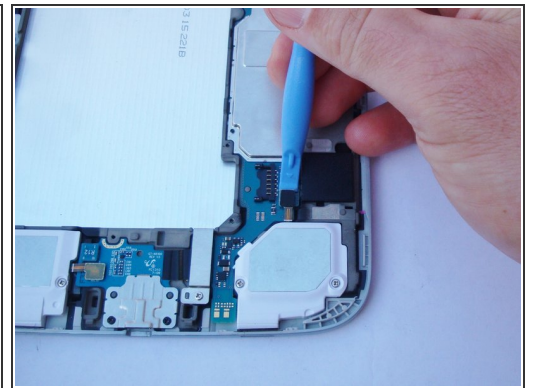
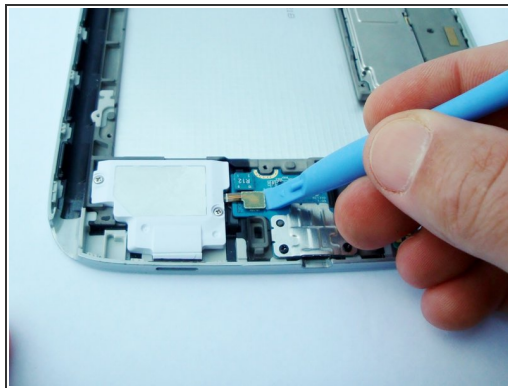
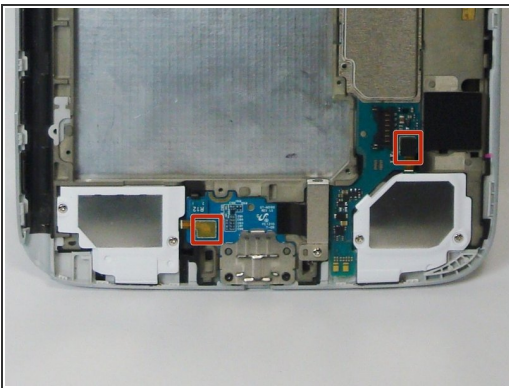
Step 6



- Gently grasp and lift up the white connector located at the bottom right corner of the battery. It is connected to the battery by two blue and two red wires.

⚠ Do not yank the connector by the wires. If it does not disconnect easily, slide a plastic opening tool between the white connector and the board to lift the connector away from the board.

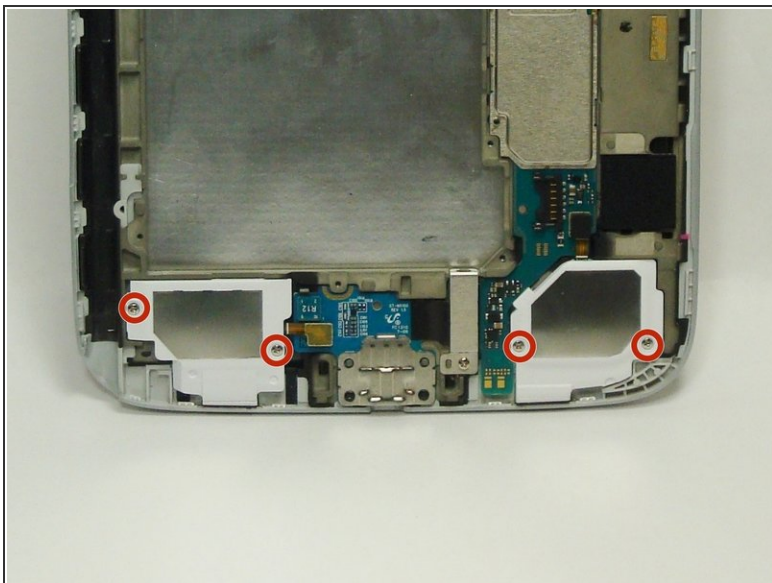
Step 7 — Speakers



- Gently pry up the connectors there is one per speaker

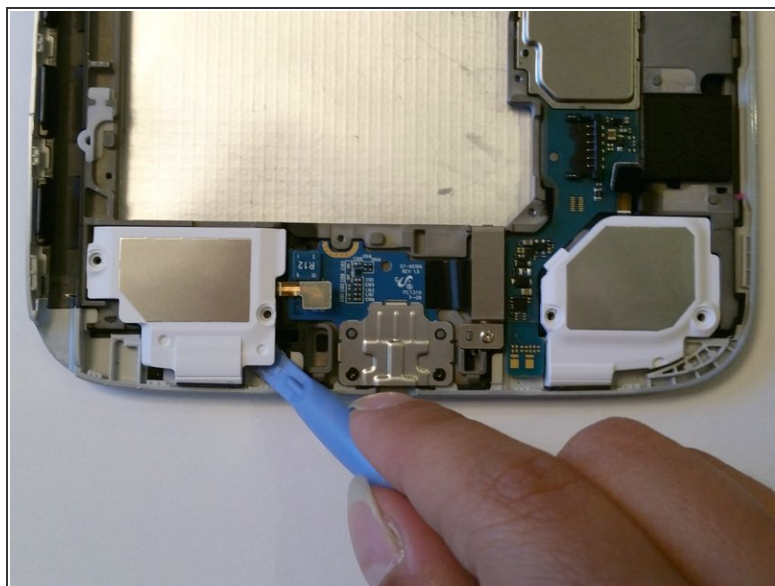
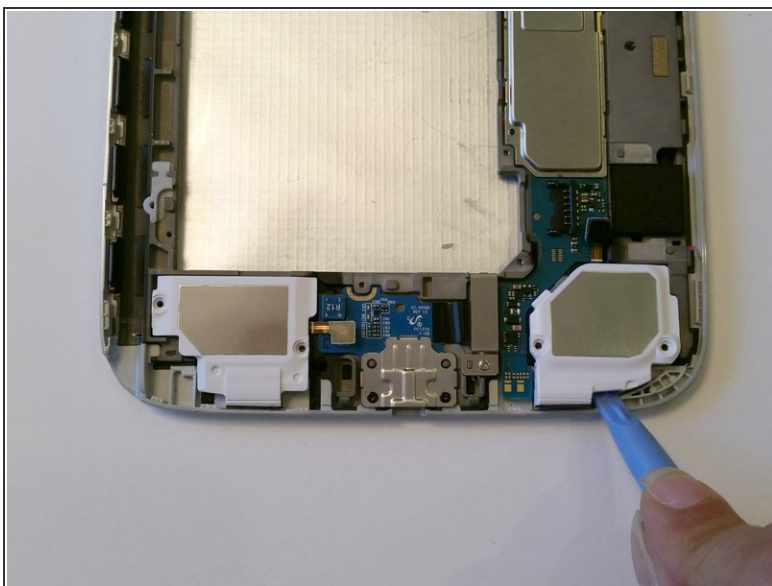
⚠ Do not yank the connector. If it does not disconnect easily use a plastic opening tool between the connector and the board to lift the connector away from the board.

Step 8



- For each speaker remove the two 3-mm Phillips head screws using a Phillips #00 screwdriver.

Step 9



- Remove the speakers from their housing.
- ⓘ If difficult use a plastic opening tool to pry up.

To reassemble your device, follow these instructions in reverse order.