



Samsung Galaxy Note Midframe Replacement

A secondary guide for a secondary installation.

Written By: David Ritter



INTRODUCTION

Use this guide to remove the back cover. This guide is a prerequisite for many other guides. You may need to remove the midframe if your need to install a new antenna, Micro USB port, headphone jack and earpiece, or replace the motherboard.



TOOLS:

- [Phillips #00 Screwdriver](#) (1)
 - [iFixit Opening Tools](#) (1)
-

Step 1 — Battery



- Make sure the screen is face-down and the camera is opposite you.
- Insert the flat end of a spudger into the phone's top right rectangular slot.
- Use the spudger as a lever to pry open the back of the phone.

Step 2



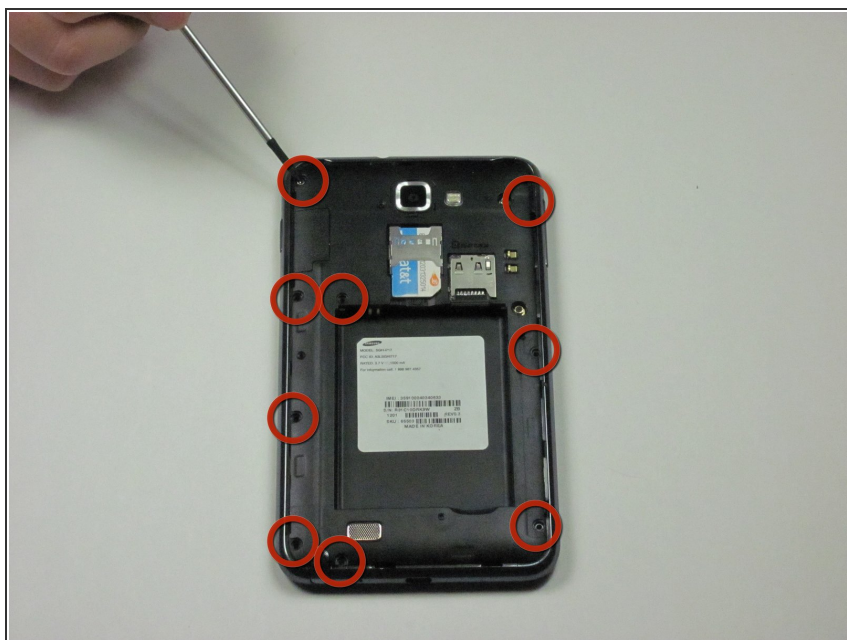
- With the spudger still inserted, carefully slide the spudger down the side of the phone.
- Gently peel off the back cover with your hand.

Step 3



- Place the spudger in the battery's bottom right slot.
- Gently pry to remove the battery.

Step 4 — Midframe



- Remove the nine 3mm screws on the perimeter of the phone with a Phillips #00 screwdriver.

Step 5




- Remove the stylus from the bottom of the phone.

Step 6



- Pry all the way around the sides with a plastic pry tool and gently pop off the midframe.
- If the cover does not come off easily, continue to pry along the phone's perimeter.

 This step can take some patience. Prying too hard or forcing the screen off can crack or scratch the screen and break the thin plastic around the stylus case.

- Separate the midframe from the phone. The midframe should now pull off easily.

To reassemble your device, follow these instructions in reverse order.