



Samsung Galaxy Note Pro 12.2 USB Port Replacement

This guide will show you how to replace a faulty USB Port in your Samsung Note Pro 12.2.

Written By: Tina Kong



INTRODUCTION

If your device is unable to charge you may need to replace your USB port. This guide will show you how to replace the USB port in your Device.



TOOLS:

- [iFixit Opening Tools](#) (1)
- [Magnetic Project Mat](#) (1)
- [Phillips #00 Screwdriver](#) (1)



PARTS:

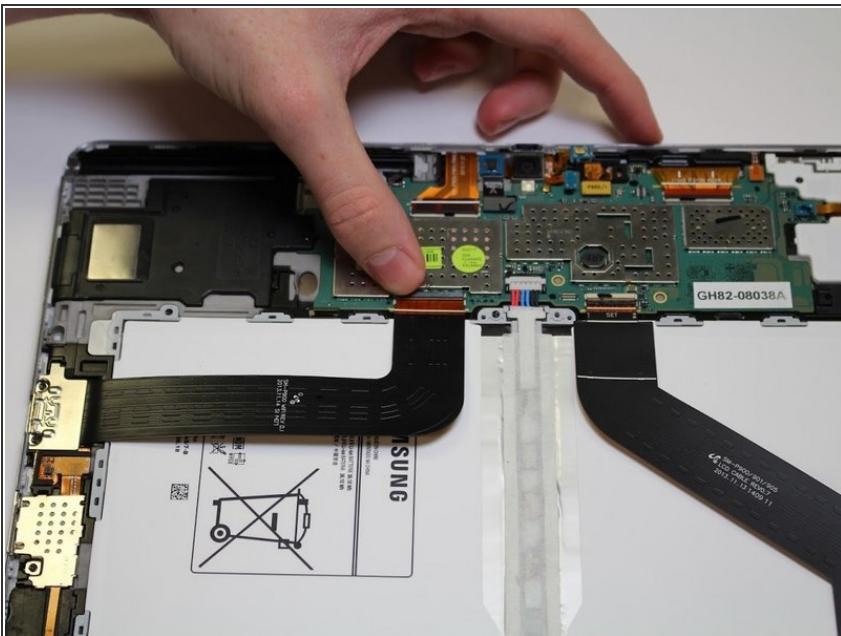
- [Galaxy Note Pro 12.2 \(Wi-Fi\) Charging Assembly](#) (1)

Step 1 — USB Port



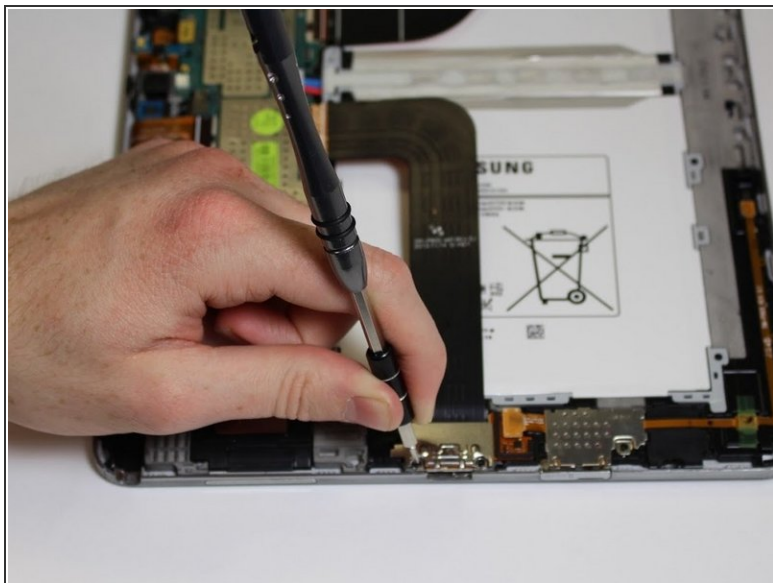
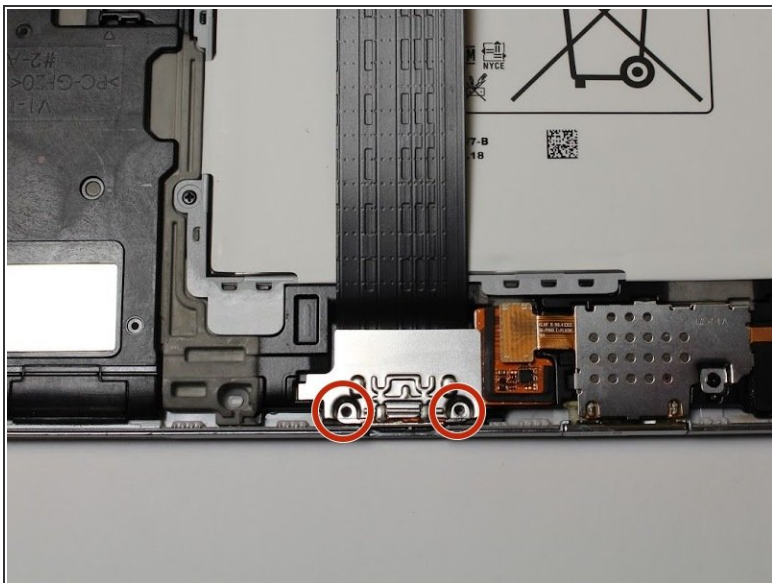
- ❗ Make sure the device is off before starting your repair.
- Carefully remove the back cover with the plastic opening tool.
- ❗ It is best to start with one corner and work your way around the device slowly.

Step 2



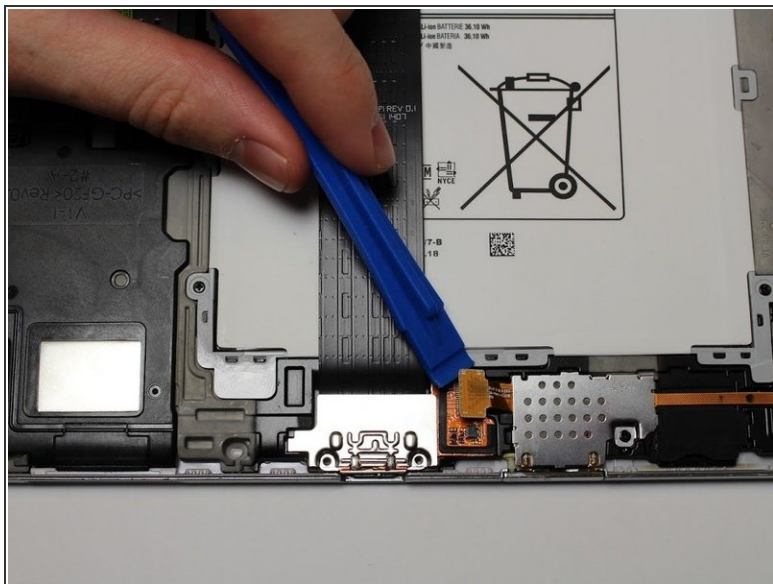
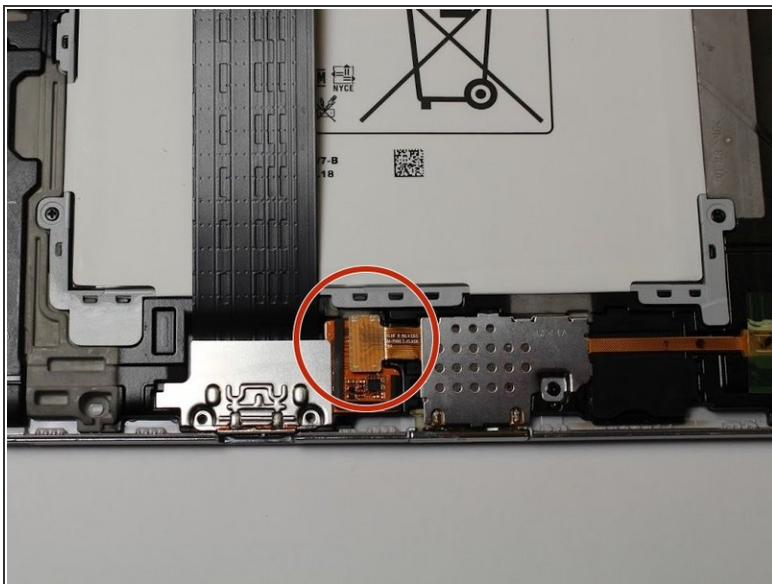
- Using your finger, push up on the clip to disconnect from the device.

Step 3



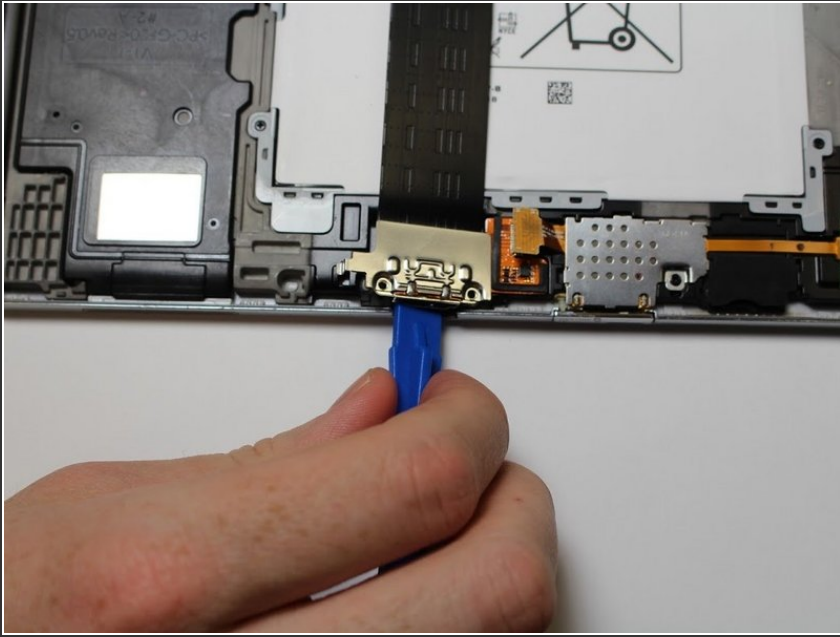
- Remove the two 3mm screws from the silver cover using the Phillips #00 screwdriver.

Step 4




- Pop open the orange tab that is connected to the SD port using the plastic opening tool.

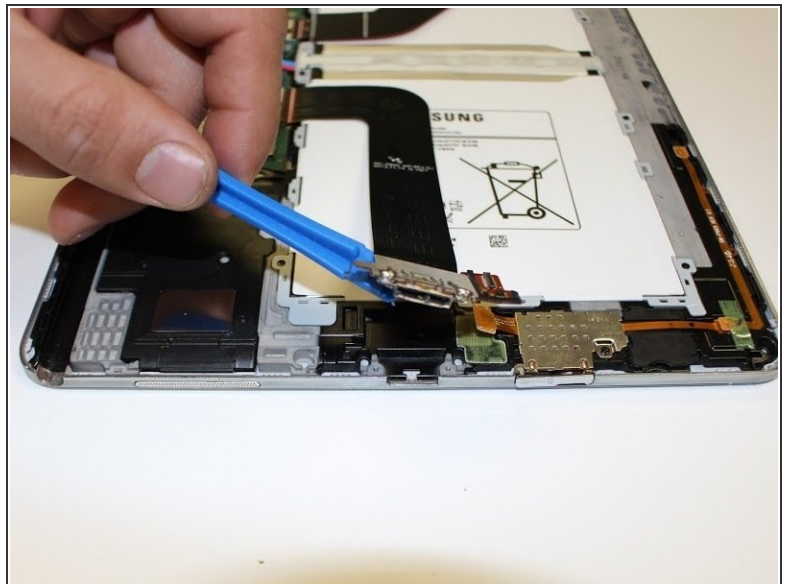
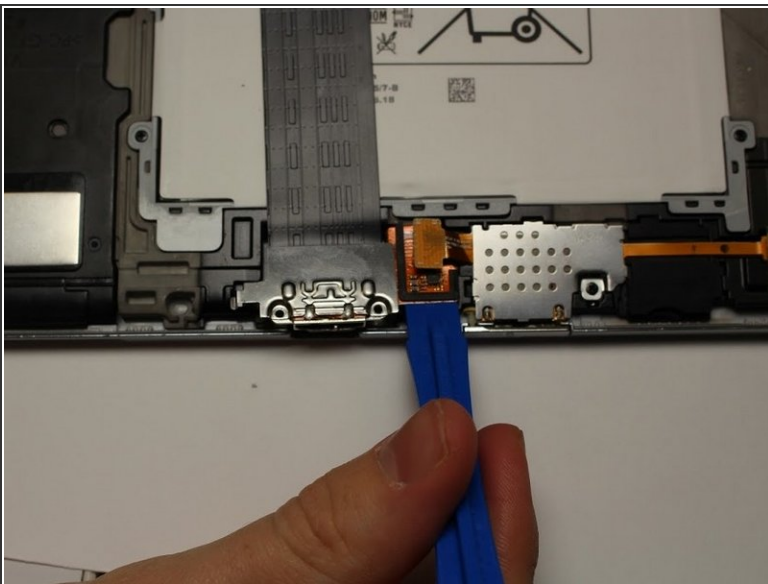
Step 5




- Pop up the USB port with the plastic opening tool.

 Make sure that you are pushing up from underneath the part and not placing the tool inside the USB port itself.

Step 6



- Using the plastic opening tool, carefully lift away the orange piece connected to the USB port.

 This piece is glued down. Be careful as you peel it away from the device.

To reassemble your device, follow these instructions in reverse order.