



# Samsung Galaxy Note SM-P600 Battery Replacement

This is a quick guide to help in the replacement of the battery in your tablet

Written By: dwales



# INTRODUCTION

This is a quick guide to help in the replacement of the battery in your tablet



## TOOLS:

- [iSesamo Opening Tool](#) (1)
- [Small Plastic Spudger](#) (1)
- [Phillips Head Screwdriver: Size PH1](#) (1)



## PARTS:

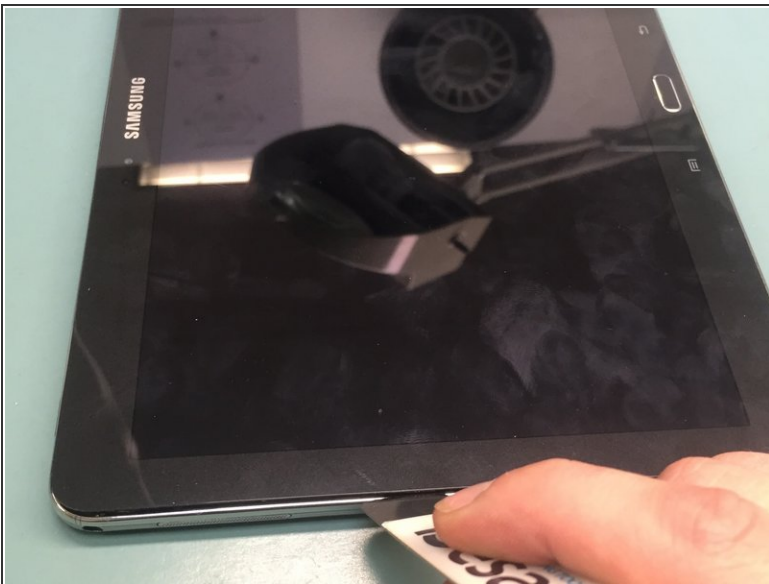
- [Galaxy Note 10.1 \(2014\) Battery](#) (1)

## Step 1 — Begin repair



- To start, power down your device

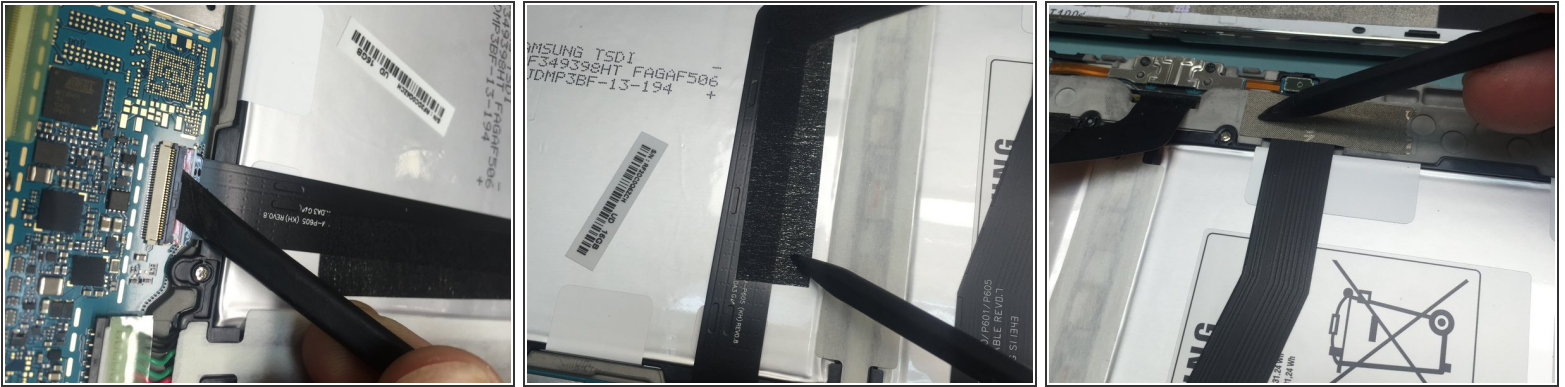
## Step 2 — Removing the plastic back



- Carefully insert either a plastic pry tool or an iSesamo around the edges to pop the plastic clips free, allowing the separation of the rear cover. You may need to go around all four edges a few times till you feel it begin to lift. Again, this step must be completed very carefully to avoid damaging the display or the buttons located on the sides.

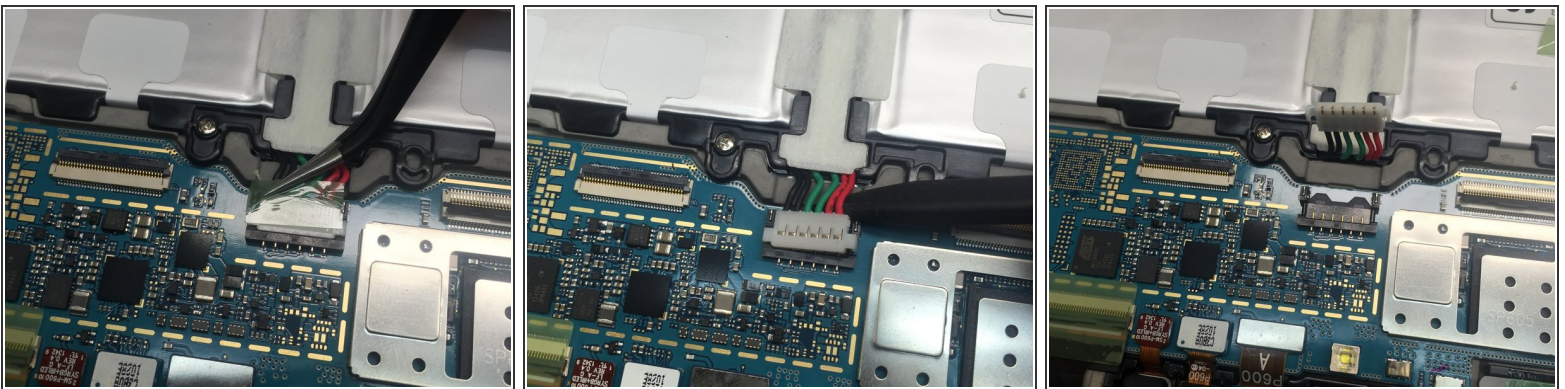


### Step 3 — Removing ribbon cables covering battery



- Using no plastic spudger, push the zif connector on each ribbon cable to release them. Then use the plastic spudger to slide under the cable with the black adhesive tape to remove it. Use a pair of tweezers to remove the silver tape on the top of the other cable.

### Step 4 — Disconnecting the battery



- Remove the kapton tape located on the connector of the battery. Use the spudger to release the battery connector. Do this carefully as it is a tight connection. Then remove the 6 screws located along the sides, they are the same length and thread so their return spots are not an issue. Lift out the battery and the reverse steps to reinstall.

To reassemble your device, follow these instructions in reverse order.