



Samsung Galaxy Note Speaker Enclosure Replacement

Replace the speaker assembly in your Samsung Galaxy Note.

Written By: Sam Goldheart



INTRODUCTION

Use this guide to replace your Samsung galaxy Note's speaker.



TOOLS:

- [iFixit Opening Tools](#) (1)
 - [Spudger](#) (1)
 - [Phillips #00 Screwdriver](#) (1)
-

Step 1 — Stylus



- Grasp the cap of the stylus and remove it from its slot in the midframe.

Step 2 — Rear Case



- Pry with a plastic opening tool, or your fingernail, in the divot to the right of the rear-facing camera, near the volume rocker.

Step 3



- Lift and remove the rear case from the phone.

Step 4 — Battery



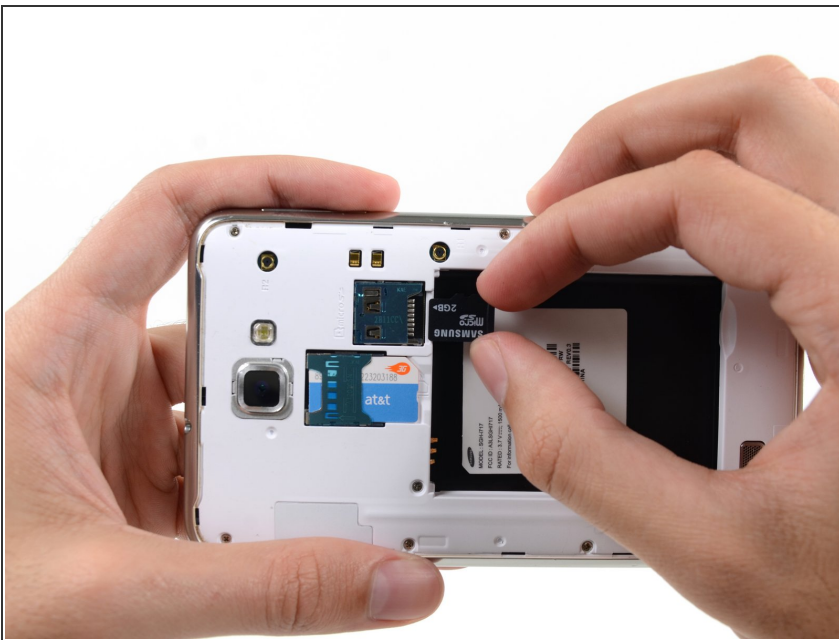
- Insert your finger in the notch of the battery compartment.
- Press the battery toward the rear facing camera while pulling outward.

Step 5 — MicroSD Card



- Use the flat end of a spudger, or your fingernail, to press the microSD card slightly deeper into its slot until you hear a click.
 - After the click, release the card and it will pop out of its slot.
- ☑ For reassembly, push the microSD card into the slot until it clicks in place.

Step 6



- Remove the microSD card from its slot in the midframe.

Step 7 — SIM Card



- Use a plastic opening tool, or your fingernail, to push the SIM card out of its compartment.

Step 8



- Slide the SIM card out the rest of the way with your thumb and remove it from the device.

Step 9 — Midframe



- Remove the nine 3.4 mm Phillips #00 screws securing the midframe to the display assembly.

Step 10



- Insert your plastic opening tool to the left of the power button between the midframe and the front panel assembly and pry.

Step 11



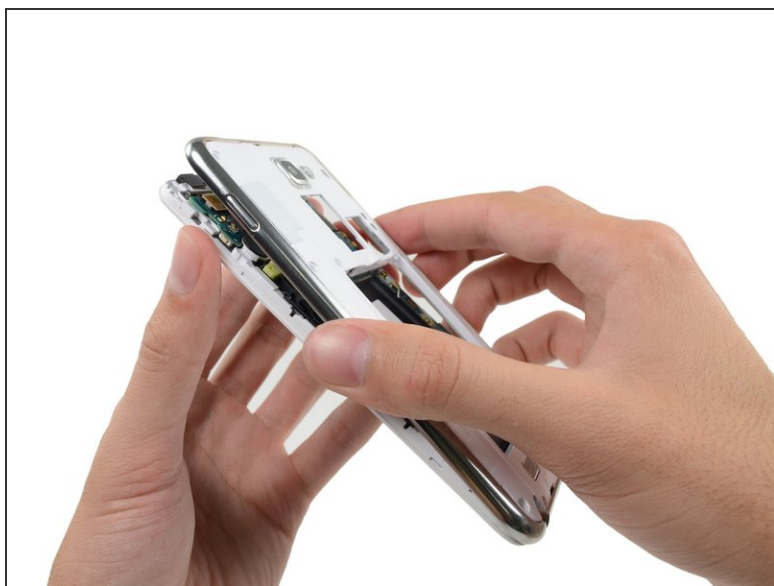
- Slide the plastic opening tool down the seam.

Step 12



- Insert your plastic opening tool to the left of the headphone jack between the midframe and the display assembly.
- Slide the opening tool along the top edge of the phone.
- Continue to run the plastic opening tool around the perimeter of the phone until the midframe is separated.

Step 13



- Remove the midframe from the display assembly.

Step 14 — Speaker Enclosure



- Remove the three 3 mm Phillips #00 screws securing the speaker enclosure to the front panel assembly.

Step 15



- Remove the speaker enclosure from the display assembly.

To reassemble your device, follow these instructions in reverse order.