



Samsung Galaxy Note10 Screen Replacement

Samsung Note 10 Screen Replacement Assembly

Written By: Mark D Schlossman



INTRODUCTION

How to Replace Screen on Samsung Note10 Successfully without breaking backglass!

Making it easy to understand is my goal for my viewers that will scroll through the pictures to get the job done or details for 1st-time repairs.



TOOLS:

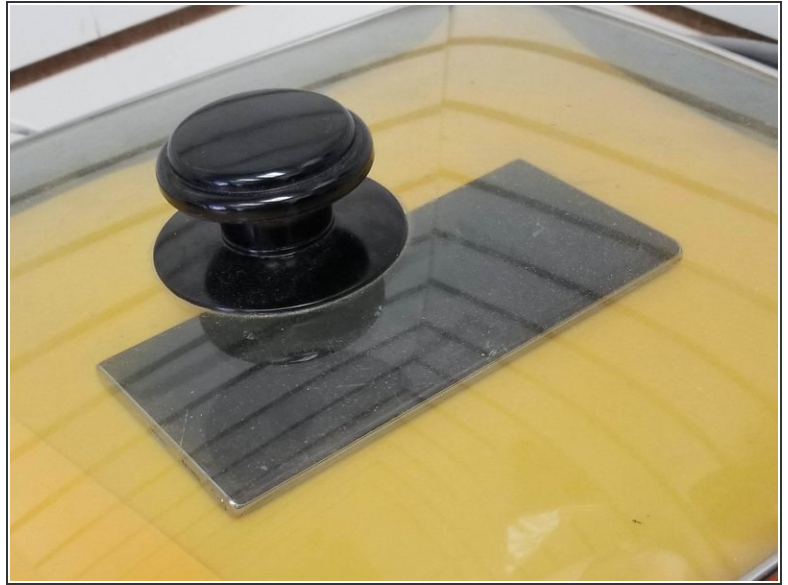
- [Spudger](#) (1)
- [Phillips PH000 Screwdriver](#) (1)
- [Jimmy](#) (1)
- [Suction Handle](#) (1)
- [iFixit Opening Picks set of 6](#) (1)
- [Heat Gun](#) (1)
- [Heat Pad](#) (1)



PARTS:

- [Note10 Screen Assembly](#) (1)

Step 1 — Screen



Test to see if phone is functional



Force Shut Down Device



Hold power button and volume down button for 7 seconds! Any longer it will restart.

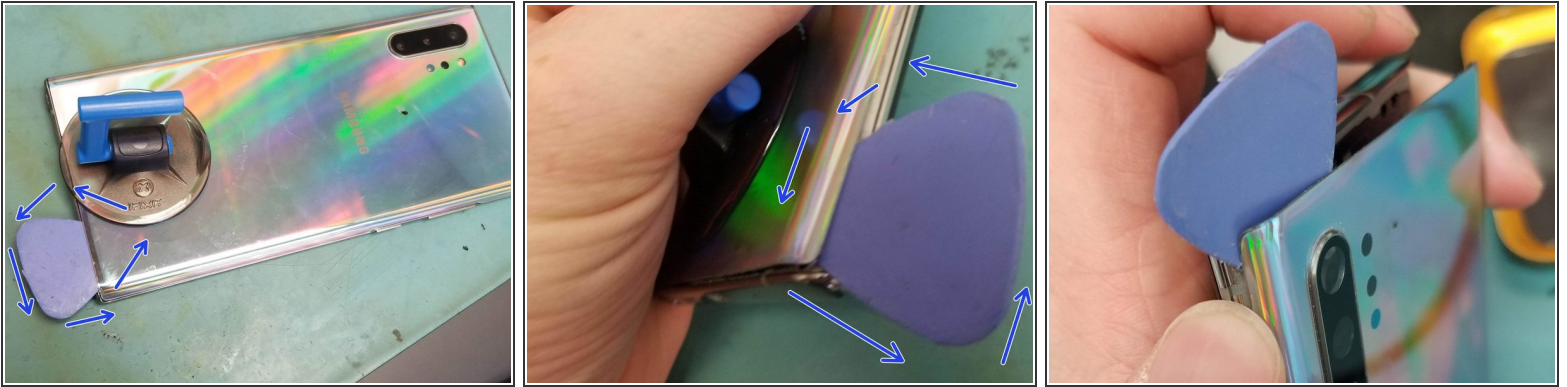


Apply Heat to Back Glass



Should be hot to touch

Step 2



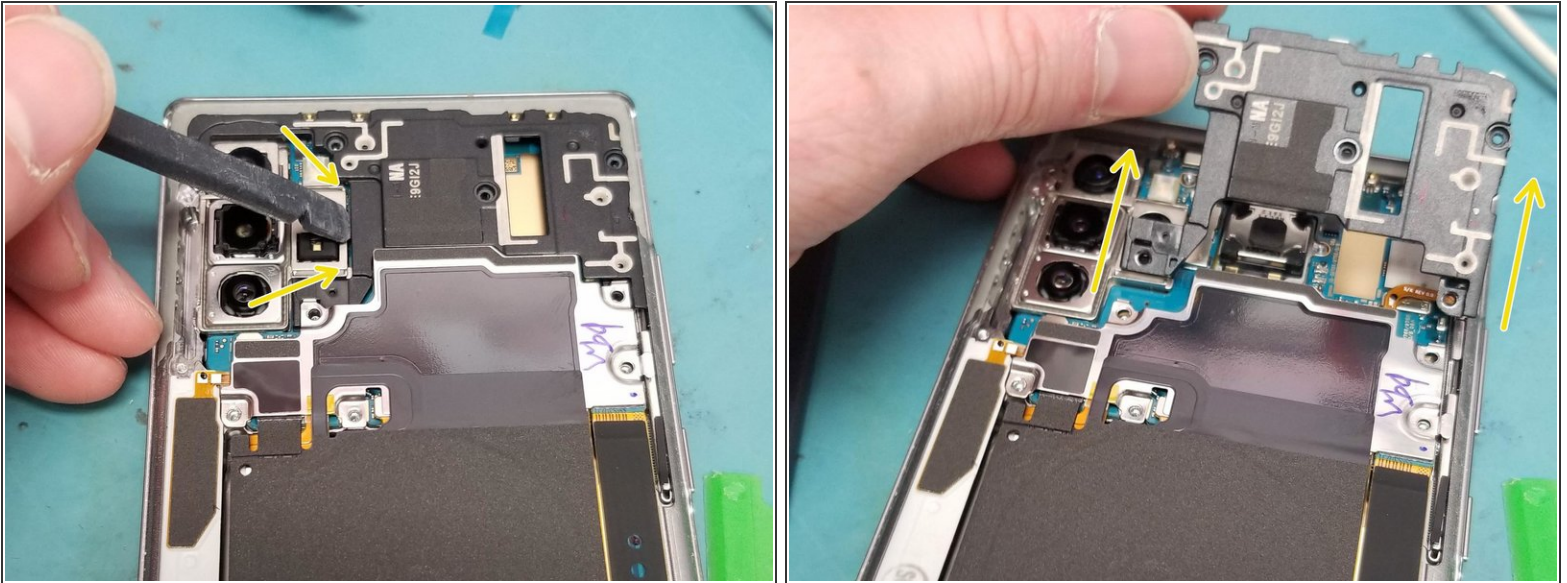
- Use suction cup on bottom 1st use metal pry tool to make enough room for guitar pick.
 - Rotate guitar pick around edges.
 - Wiggle back glass with suction cup. Use your hand to lift one edge.
- i** Note10 Edges are more curved than previous note models and also curve around volume/side buttons
- !** Do not recommend using metal pry tool you will most likely break it the backglass

Step 3



- Remove PH000 14 Screws
- i** Start From the top removing wireless charger pad.

Step 4



- Pry from the top and slide upward to remove plastic protector

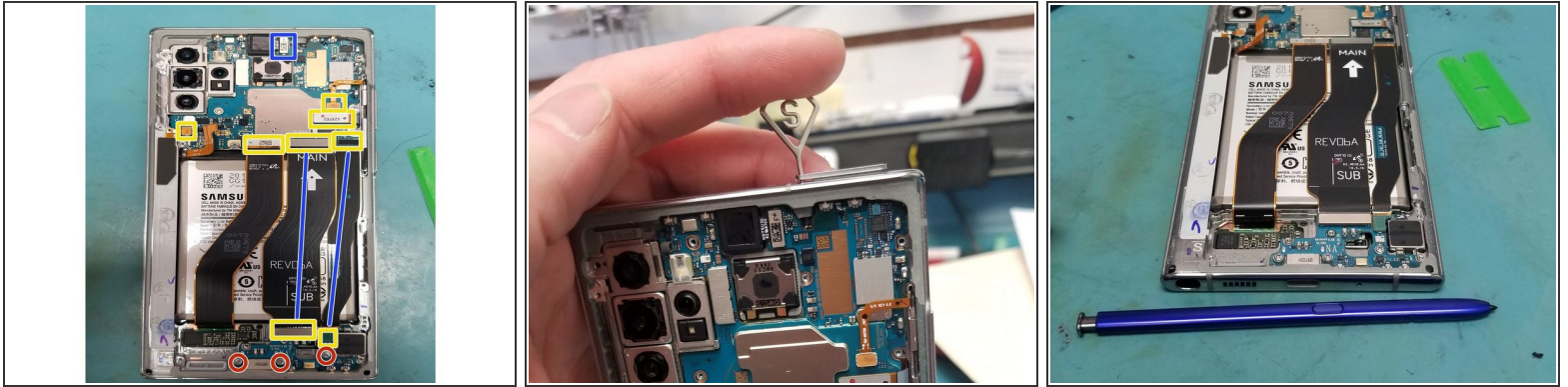
☑ Remove from the top down!

Step 5



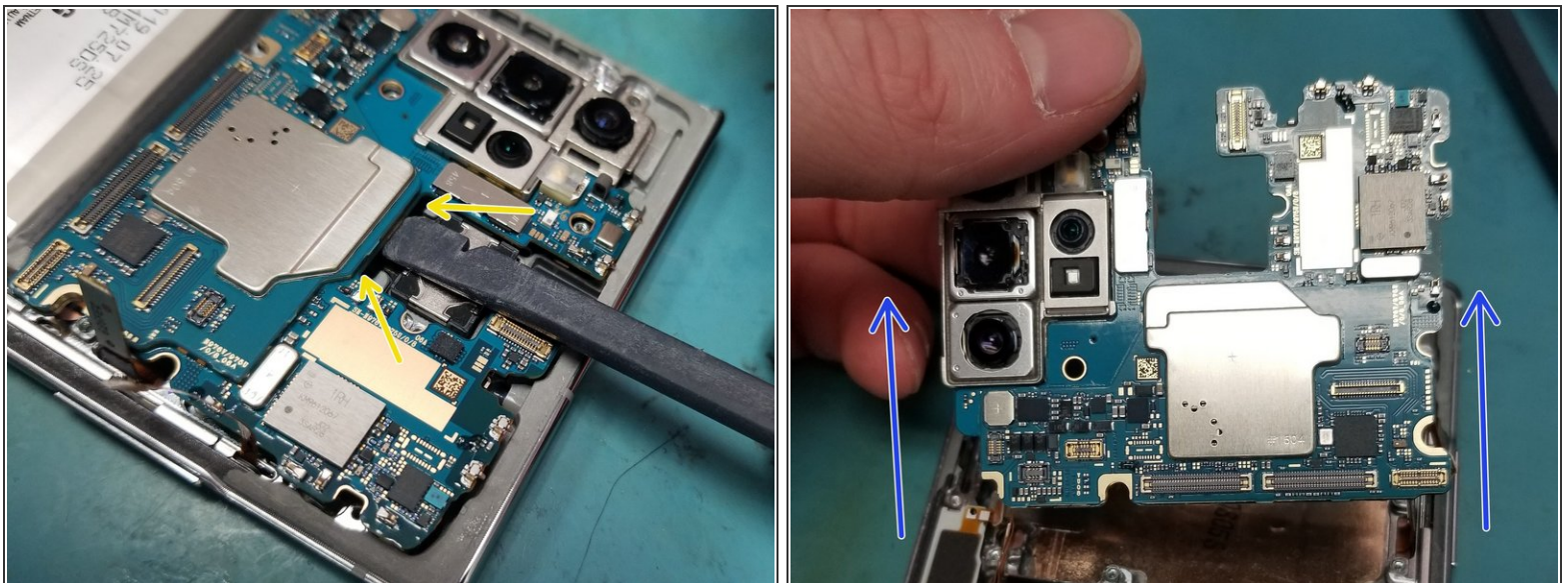
- Fold down metal bracket of wireless charging pad
- Disconnect Battery Connector
- Remove Wireless charging Pad connection. (BLACK FLEX)
- Lift upward wiggling off the side adhesive and you will pull up the bottom plastic protector

Step 6



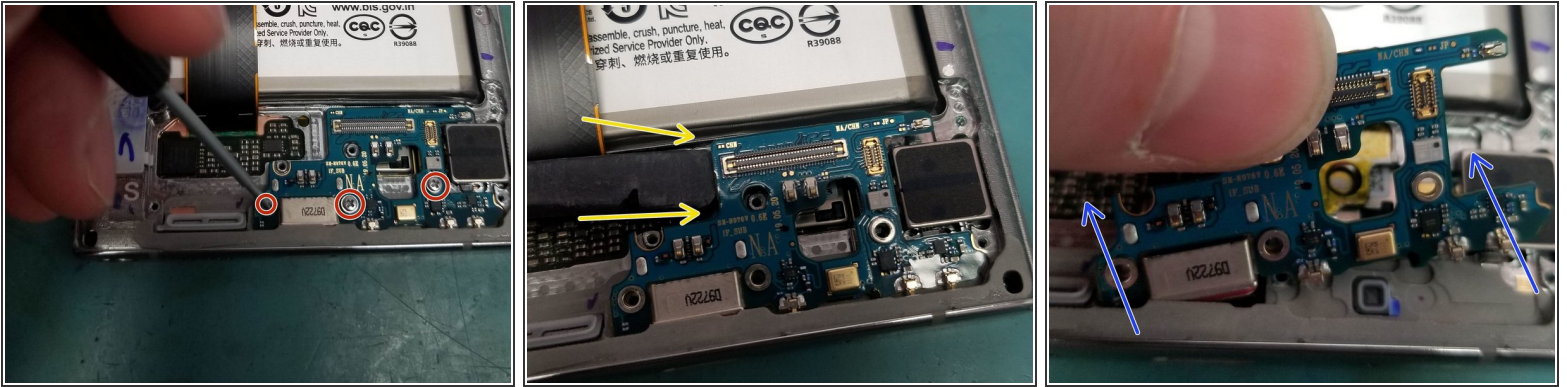
- 3 PH000 Screws
 - Disconnect front camera, and 2 flexs cables marked in blue put off to the side.
 - Disconnect everything marked in Yellow or Blue
- ⚠ Sim Card Tray and Stylus should be removed as well before moving boards!

Step 7



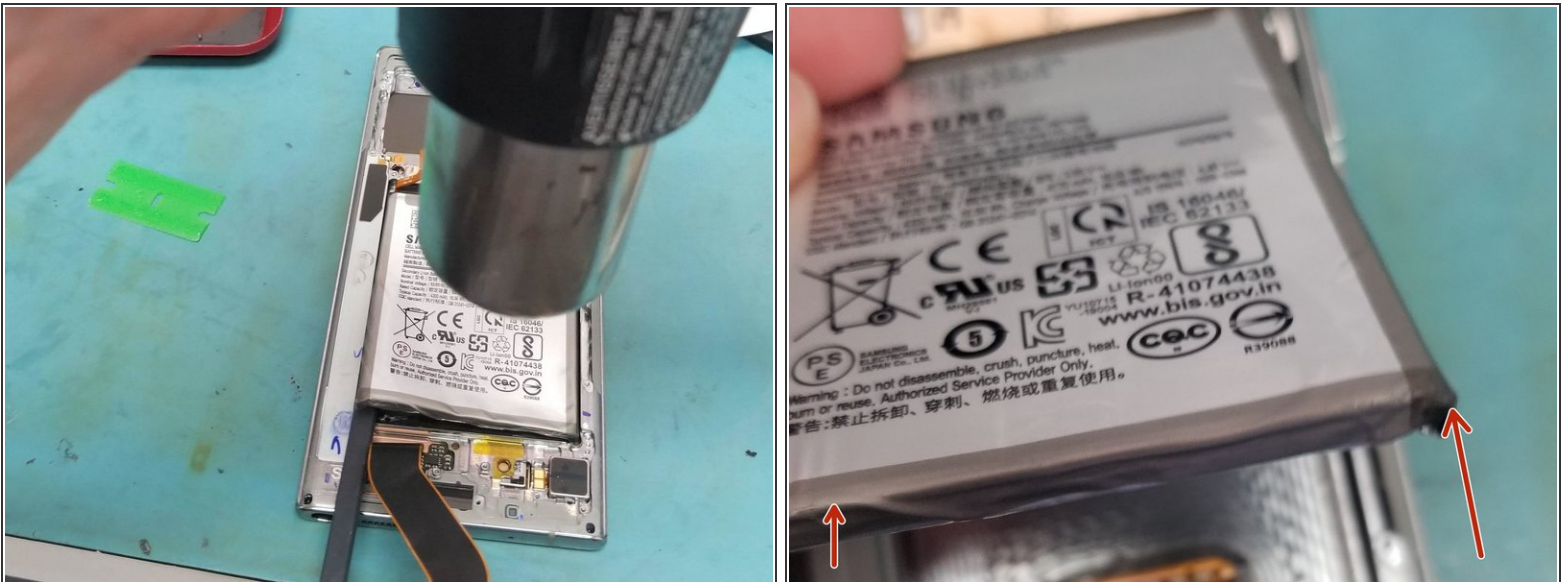
- Pry with spudger Main Board from the top down gently lift board.
- At an angle lift board upward with your free hand

Step 8



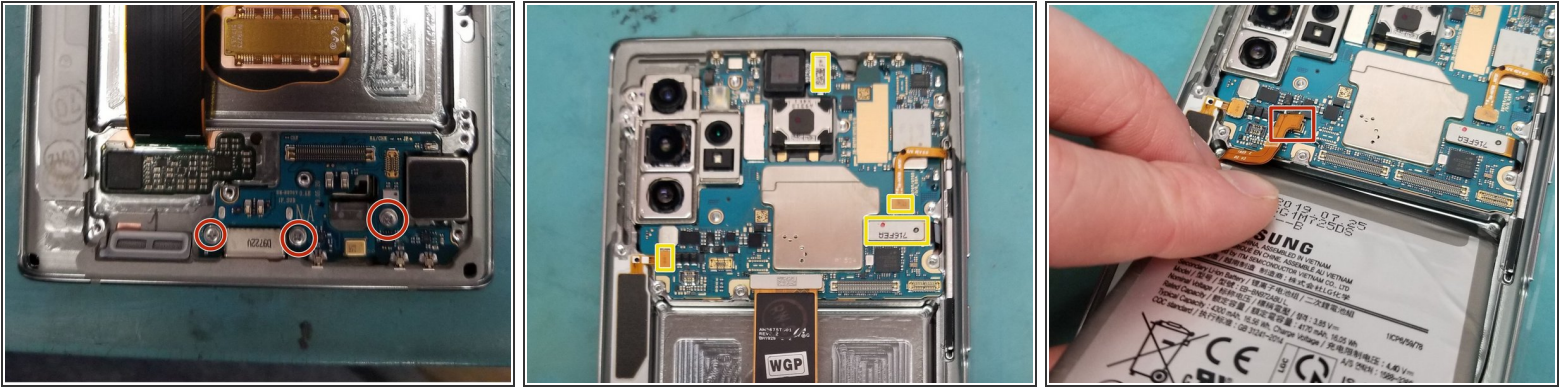
- Unscrew 3 PH000 Screws
- With spudger lift top of charging port
- Lift from the top of charging port moving towards the left

Step 9



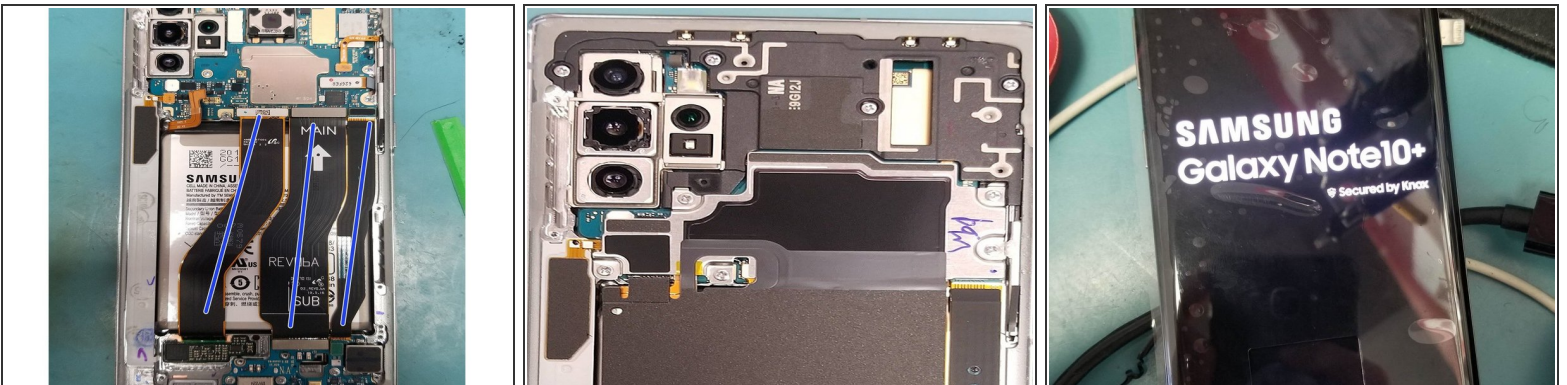
- Use heat gun warm up battery adhesive pry from the bottom up with plastic spudger
 - Lift from bottom up
- ⚠ Do not rip battery out you will deform it

Step 10



- Place charging port daughter board in new screen assembly
- Screw Down PH000 Screws
- Then place the Main board
- Connect all flex cables
- ⚠ Connect battery with adhesive and place battery to ensure it connects and seats correctly

Step 11



- Connect all the flex cables
- Place Charging pad and plastic protectors
- ⓘ Don't screw everything down complete until after you test the screen

Step 12



- Check your work place back glass with new adhesive

To reassemble your device, follow these instructions in reverse order.