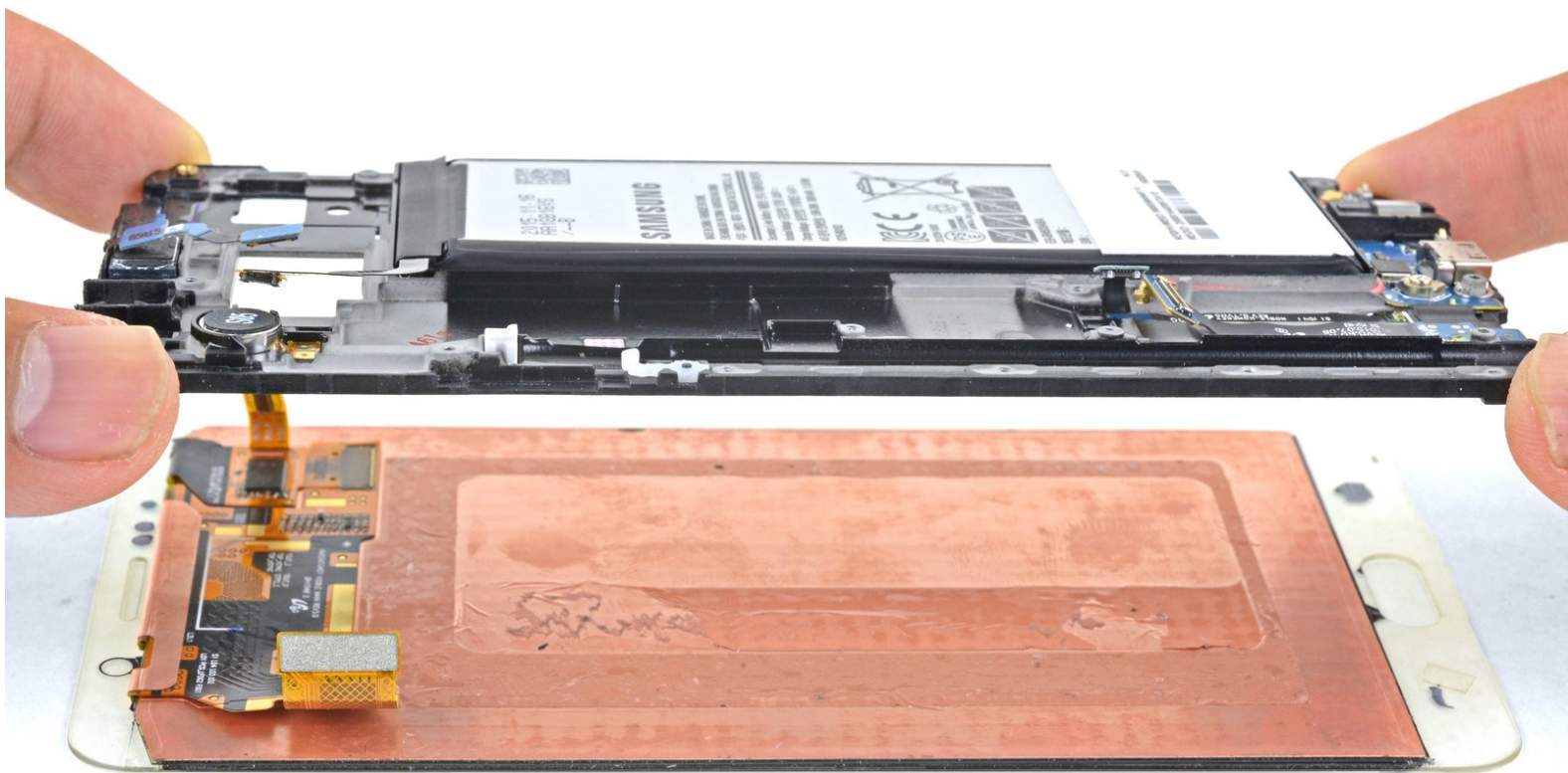




# Samsung Galaxy Note5 Display Assembly Replacement

Follow this guide to remove and replace the display assembly for your Samsung Galaxy Note5.

Written By: Arthur Shi



## INTRODUCTION

Follow this guide to remove and replace the display assembly for your Samsung Galaxy Note5. The display assembly includes the front glass and the OLED panel.

This guide instructs you to replace only the display while leaving the original frame, logic board, and battery in place. However, some replacement screens for this phone come pre-installed in a new frame (a.k.a. chassis), which requires a very different procedure—transplanting your phone's internals and installing a new battery. Make sure you have the correct part before starting this guide.

**Note:** If the frame is damaged or bent, it's important to replace it, or else the new screen may not mount correctly and can suffer damage from uneven pressure.

**Warning:** The process of separating the display from the frame usually destroys the display, so don't follow this guide unless you intend to replace the display.



### TOOLS:

- [SIM Card Eject Tool](#) (1)
- [iOpener](#) (1)
- [iFixit Opening Picks set of 6](#) (1)
- [Suction Handle](#) (1)
- [Phillips #00 Screwdriver](#) (1)
- [Tweezers](#) (1)
- [Spudger](#) (1)



### PARTS:

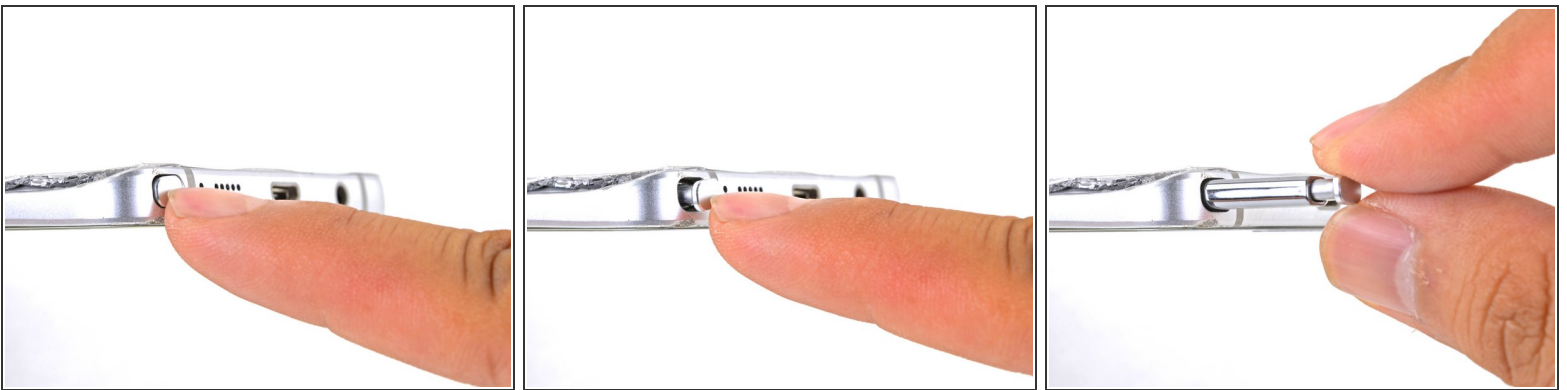
- [Galaxy Note5 Screen](#) (1)
- [Galaxy Note5 \(Verizon\) Screen Assembly](#) (1)
- [Galaxy Note5 Display Adhesive](#) (1)

## Step 1 — SIM Card Tray



- Insert a SIM eject tool, SIM eject bit, or a straightened paperclip into the small hole in the SIM card tray at the top of the phone.
- Press to eject the tray. This may require some force.
- Remove the SIM card tray.

## Step 2 — S-Pen



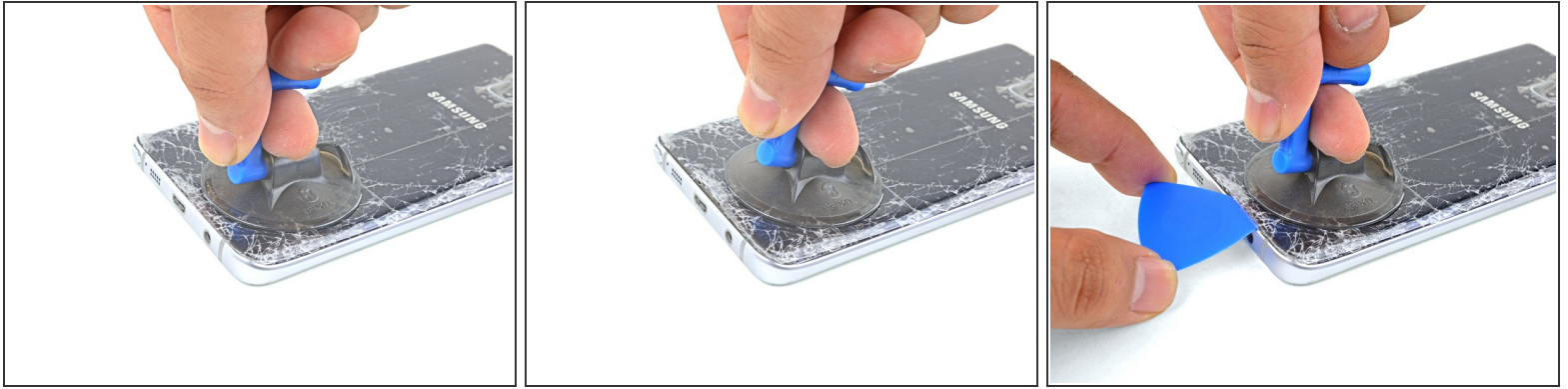
- Using your fingernail, push the S-Pen button until it clicks and pops out of the phone.
- Remove the S-Pen.

## Step 3 — Rear Glass



- ⓘ If the glass back is cracked, [carefully tape over the entire surface with packing tape](#).
- Apply a [heated iOpener](#) to the bottom of the phone for about two minutes.
- ⓘ You may need to reheat and reapply the iOpener several times to get the phone warm enough. Follow the iOpener instructions to avoid overheating.
- ⚠ A hair dryer, heat gun, or hot plate may also be used, but be careful not to overheat the phone—the OLED display and internal battery are both susceptible to heat damage.

## Step 4



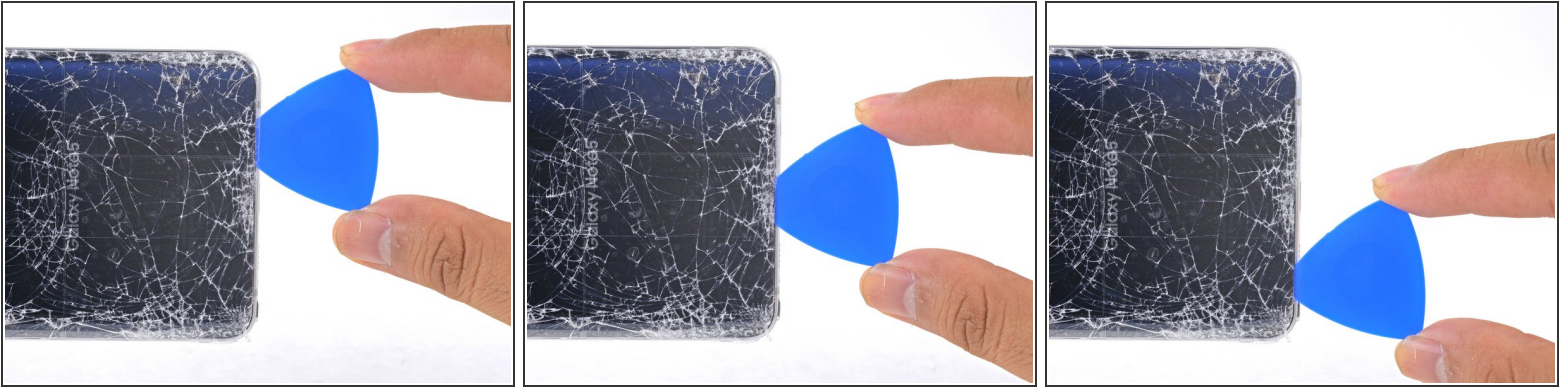
- Apply a suction cup as close as possible to the bottom edge of the phone.
  - ❗ If the phone's back cover is cracked, the suction cup may not stick. Try [lifting it with strong tape](#), or superglue the suction cup in place and allow it to cure so you can proceed.
  - Lift on the suction cup and insert an opening pick under the rear glass.
- ⚠ The rear glass very fragile and can break if you use too much force or attempt to pry with metal tools.

## Step 5



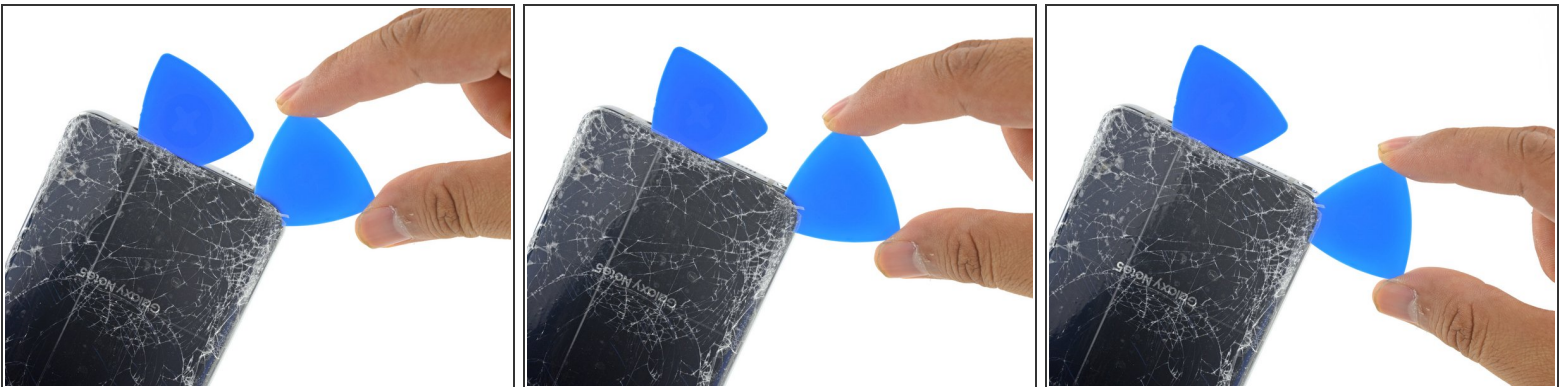
- Once the pick is in place, reheat the edge with an iOpener for another minute.

## Step 6



- Slide the pick down the bottom edge of the phone.
- i** Go slowly so that the tip doesn't slip out of the seam. If sliding becomes difficult, reheat and reapply the iOpener.
- Leave the pick in place to prevent the adhesive from resealing, and grab another pick as you proceed to the next step.

## Step 7



- Insert another pick and slowly cut around the corner of the phone.
- !** Due to the curved shape of the back, the glass is extremely fragile and prone to cracking in the corners. Be patient and reapply an iOpener if the corner feels hard to slice through.

## Step 8



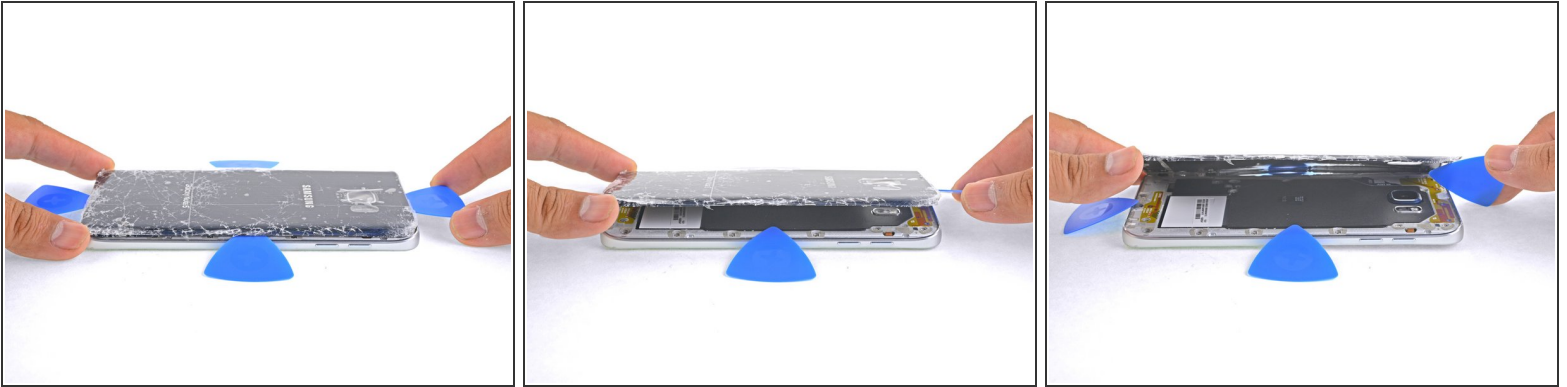
- Before cutting further, apply a heated iOpener to the long edge.

## Step 9



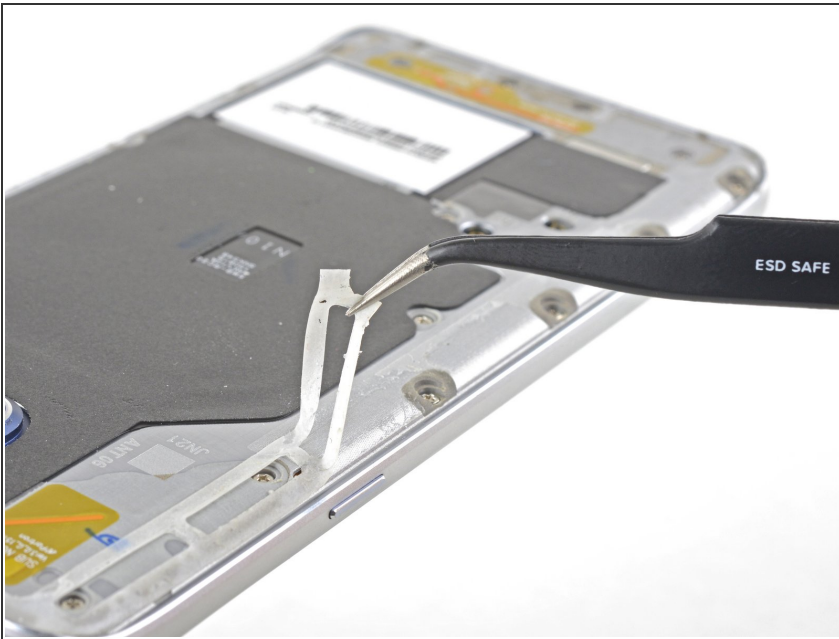
- Repeat the previous heating and cutting procedure for the remaining three sides of the phone.
- Leave an opening pick in each edge of the phone as you continue to the next to prevent the adhesive from resealing.

## Step 10



- Use an opening pick to cut any remaining adhesive around the edges of the glass.
- Lift the glass and remove it from the phone.

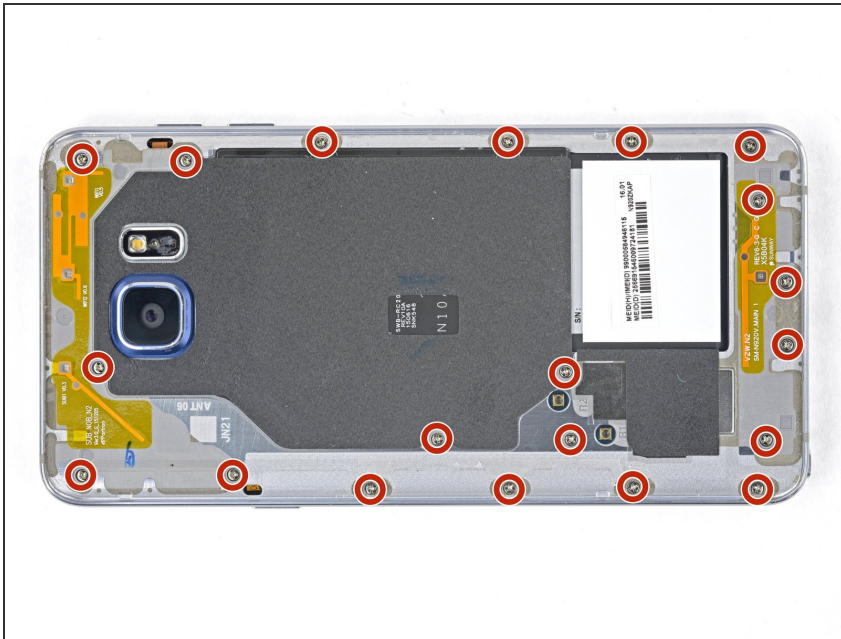
## Step 11



- ★ To reinstall the back cover:
- Use tweezers to peel away any remaining adhesive from both the back cover and the phone's chassis.
  - Clean the adhesion areas with high concentration isopropyl alcohol (at least 90%) and a lint-free cloth. Swipe in one direction only, not back and forth. This will help prep the surface for the new adhesive.
  - Be sure to turn on your phone and test your repair before installing new adhesive and resealing the phone.

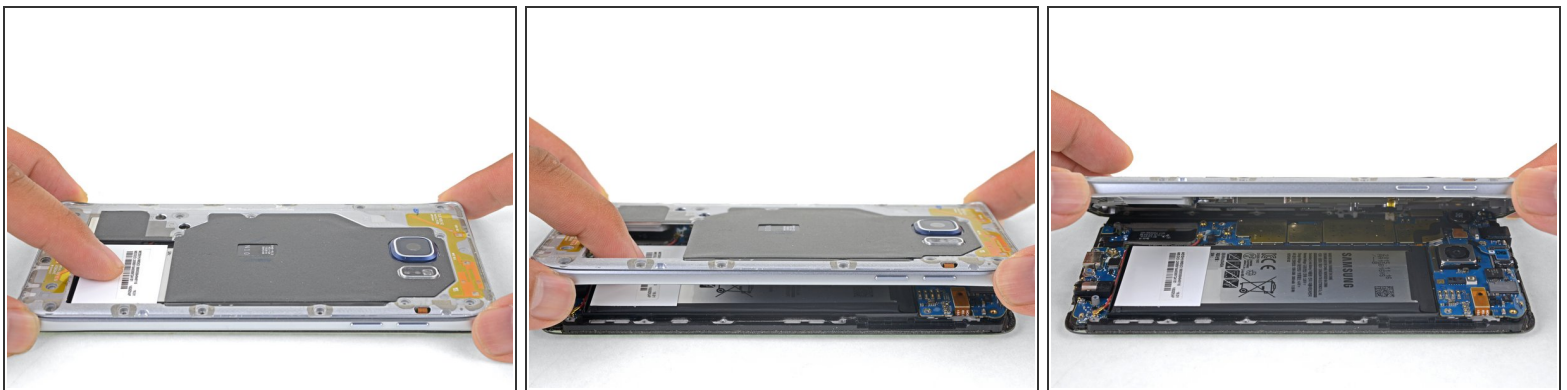
- ① Replacement adhesive comes in a pre-cut sheet to match the exact contours of the back cover. If that's not available, you can use a high-bond double-sided tape, such as [Tesa 61395](#). Be aware that this leaves gaps that are vulnerable to liquid intrusion.
- After installing the rear cover, apply strong, steady pressure to your phone for several minutes to help the adhesive form a good bond, such as by placing it under a stack of heavy books.
- ① If desired, you may reinstall the back cover without replacing the adhesive. Remove any large chunks of adhesive that might prevent the back cover from sitting down flush. After installation, heat the back cover and apply pressure to secure it. It won't be waterproof, but the glue is usually more than strong enough to hold.

## Step 12 — Midframe



- Remove the twenty 3.3 mm Phillips screws.

## Step 13



**i** Make sure you've ejected the SIM tray before performing this step.

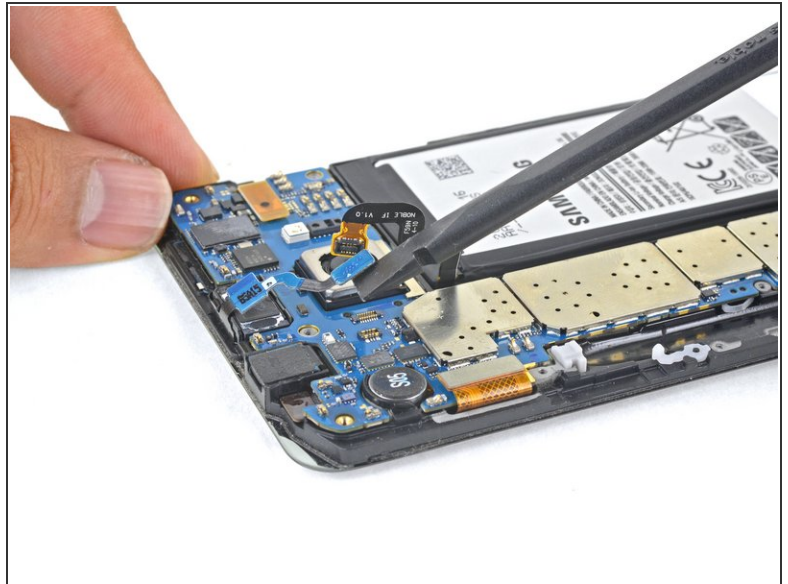
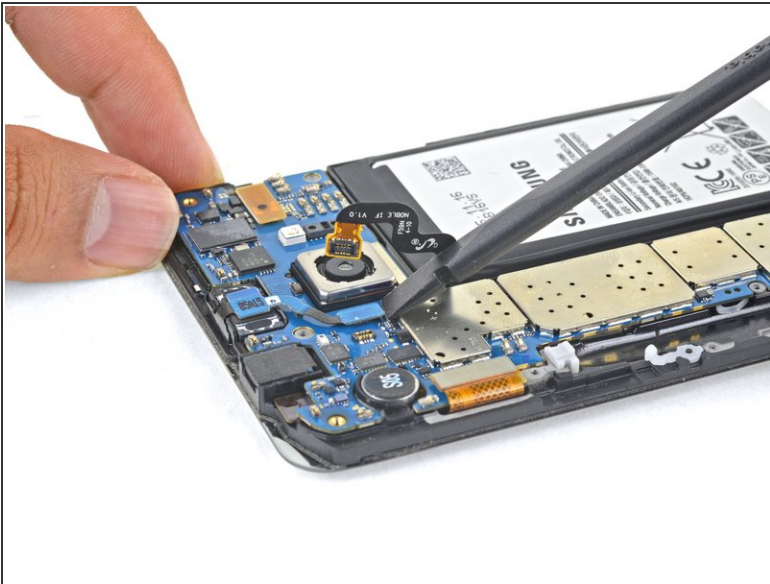
- Hold the midframe by the edges and lift it upwards while pushing down against the battery with one finger.
- i** There is a small amount of adhesive in each corner holding the midframe to the display assembly. Apply constant force until the midframe separates.
- Remove the midframe.

## Step 14 — Samsung Galaxy Note5 Battery Disconnect



- Using the flat end of a spudger, lift the battery connector straight up from its socket on the motherboard.

## Step 15 — Motherboard



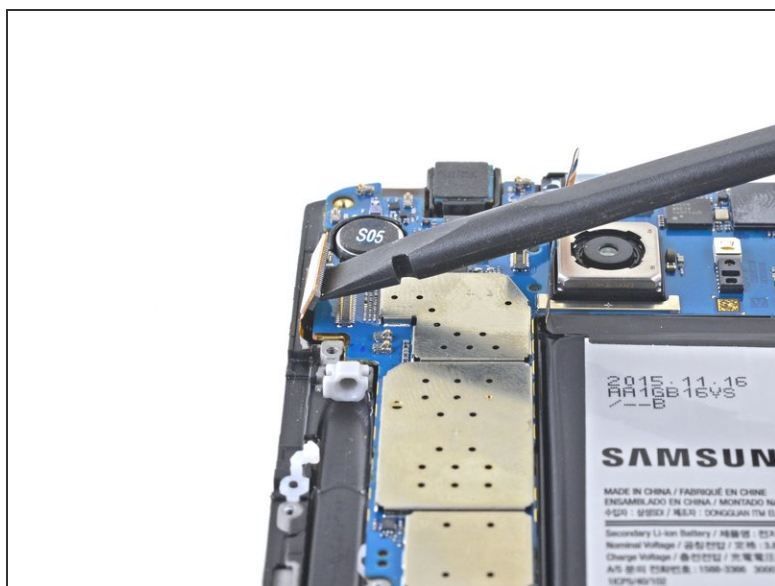
- Using the flat end of a spudger, disconnect the earpiece connector.

## Step 16



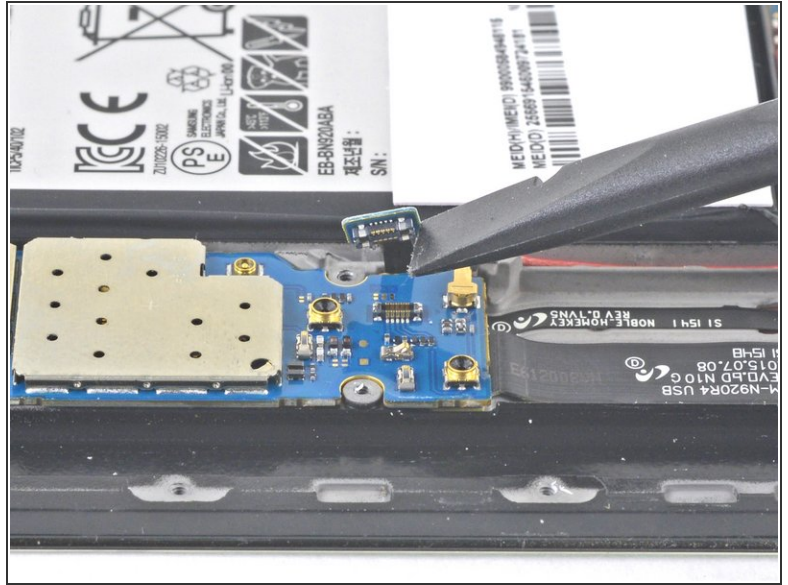
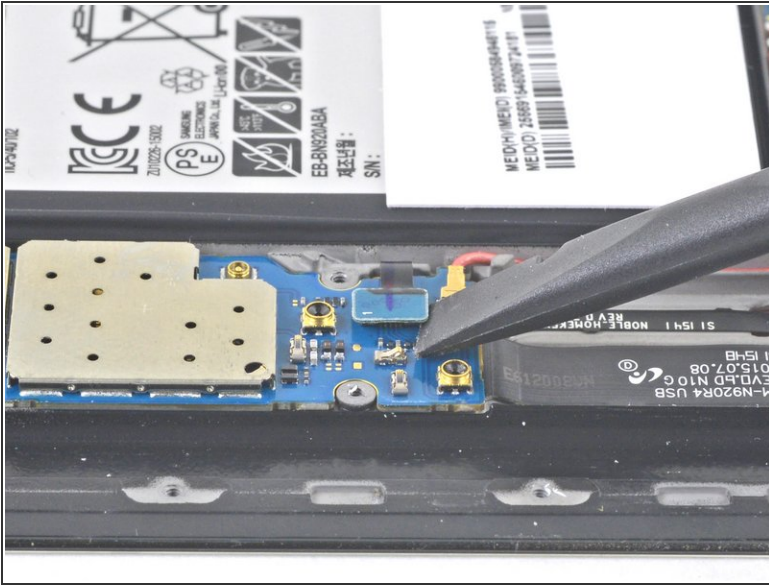
- Using the flat end of a spudger, disconnect the touchscreen connector.

## Step 17



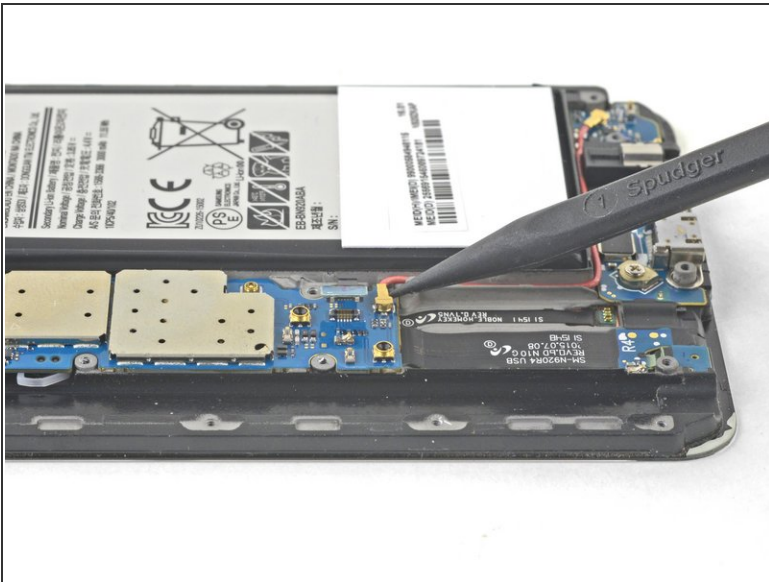
- Using the flat end of a spudger, disconnect the display connector.

## Step 18



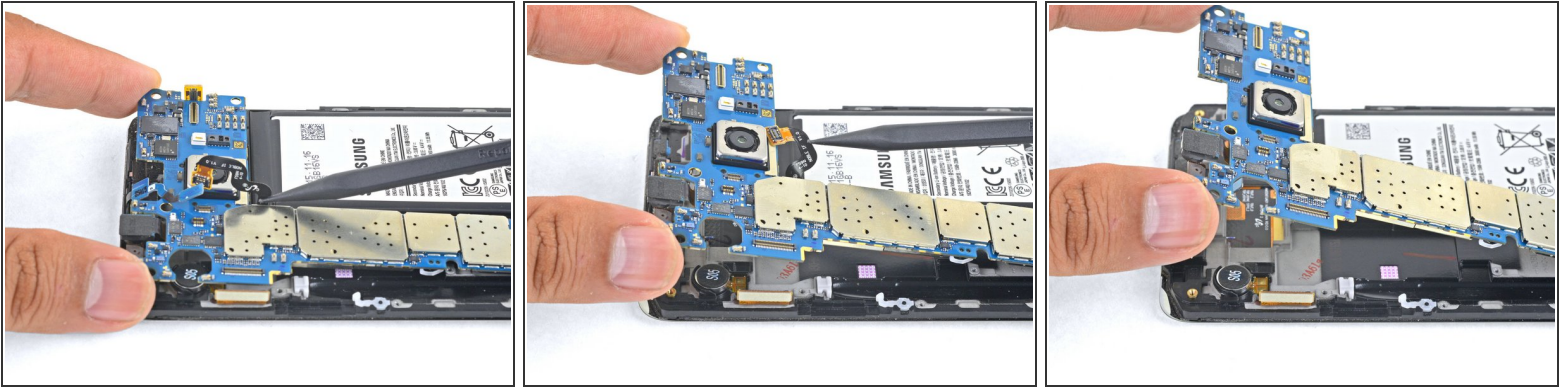
- Using the flat end of a spudger, disconnect the navigation buttons connector.

## Step 19



- Using the pointed end of a spudger, disconnect the antenna cable.

## Step 20



- Holding the motherboard by the top corners, hinge it upwards while clearing flex cables out of its path.

⚠ Do not remove the motherboard. It is still attached to the daughterboard.

## Step 21



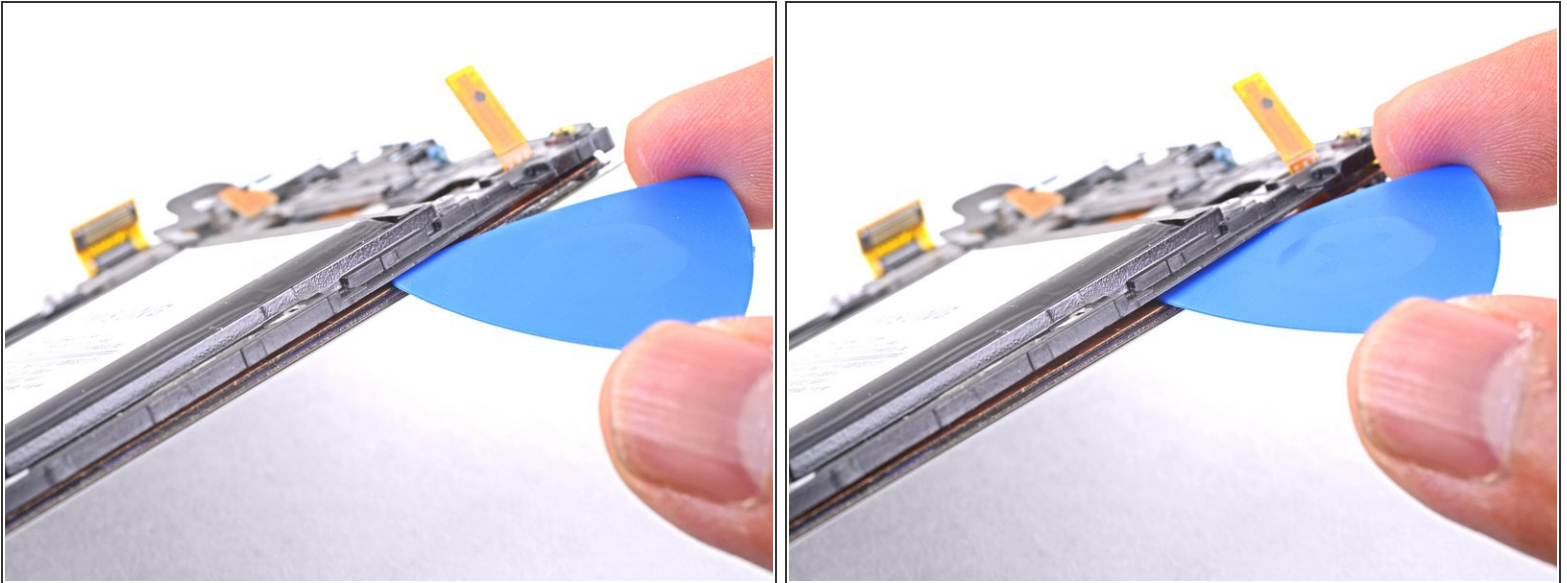
- Using the flat end of a spudger, disconnect the daughterboard connector from the motherboard.
- Remove the motherboard.

## Step 22 — Display Assembly



- [Prepare an iOpener](#) and apply it to the left edge of the display for about two minutes.
- ⓘ You may need to reheat and reapply the iOpener several times to get the phone warm enough. Follow the iOpener instructions to avoid overheating.
- ⓘ The glue securing the display can be significantly stronger than the glue that secures the back cover. If necessary, switch to a hair dryer or heat gun in order to apply enough heat to weaken the adhesive.

## Step 23



- Insert an opening pick between the plastic frame and the display assembly on the same edge you just heated.
  - ⓘ The pick should reside above the pink shielding layer, which covers the OLED panel.
  - ⓘ If you can see the pick through the front glass, you've inserted it between the OLED panel and the front glass. Remove the pick and try again.

## Step 24



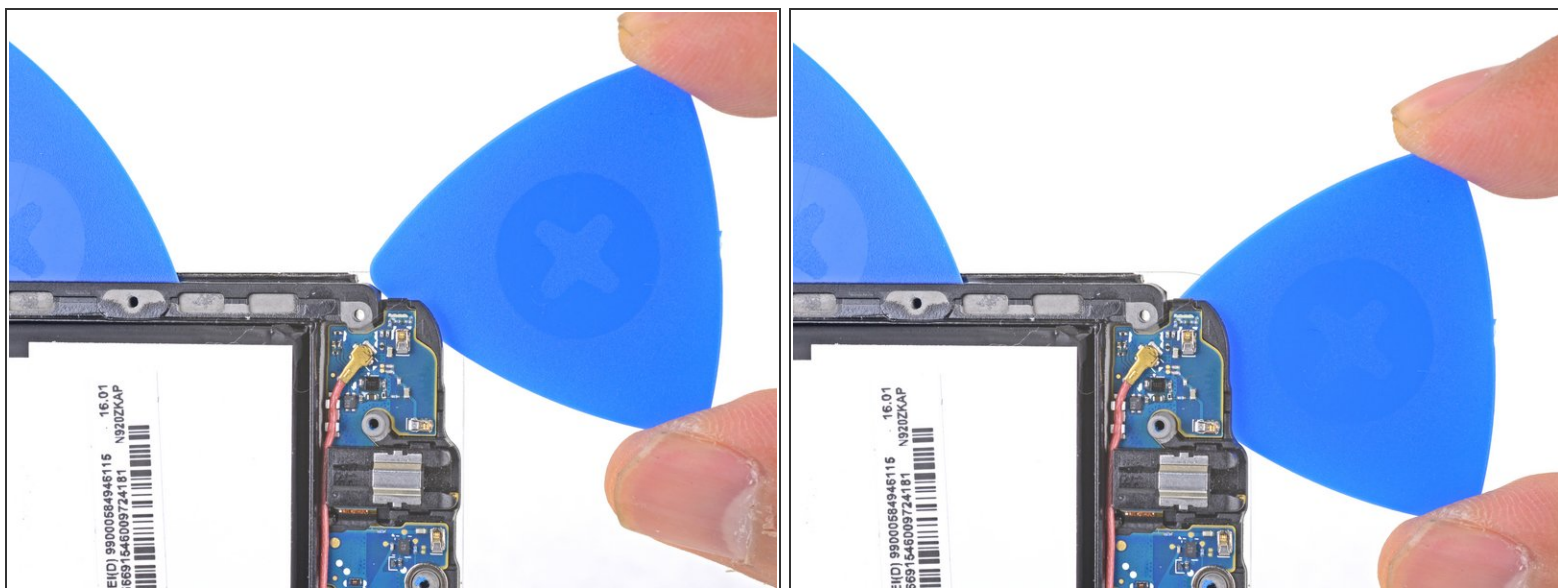
- Slide the opening pick down the battery-side of the phone, separating the adhesive.
- Stop when you get to the bottom of the battery to avoid damaging delicate capacitive buttons at the bottom of the display.
- Go slowly so that the tip doesn't slip out of the seam. If sliding becomes difficult, reheat and reapply the iOpener.
- Leave the pick in place and grab a second pick as you proceed to the next step. Leaving the pick inserted can help prevent the glue you just separated from re-adhering.

## Step 25



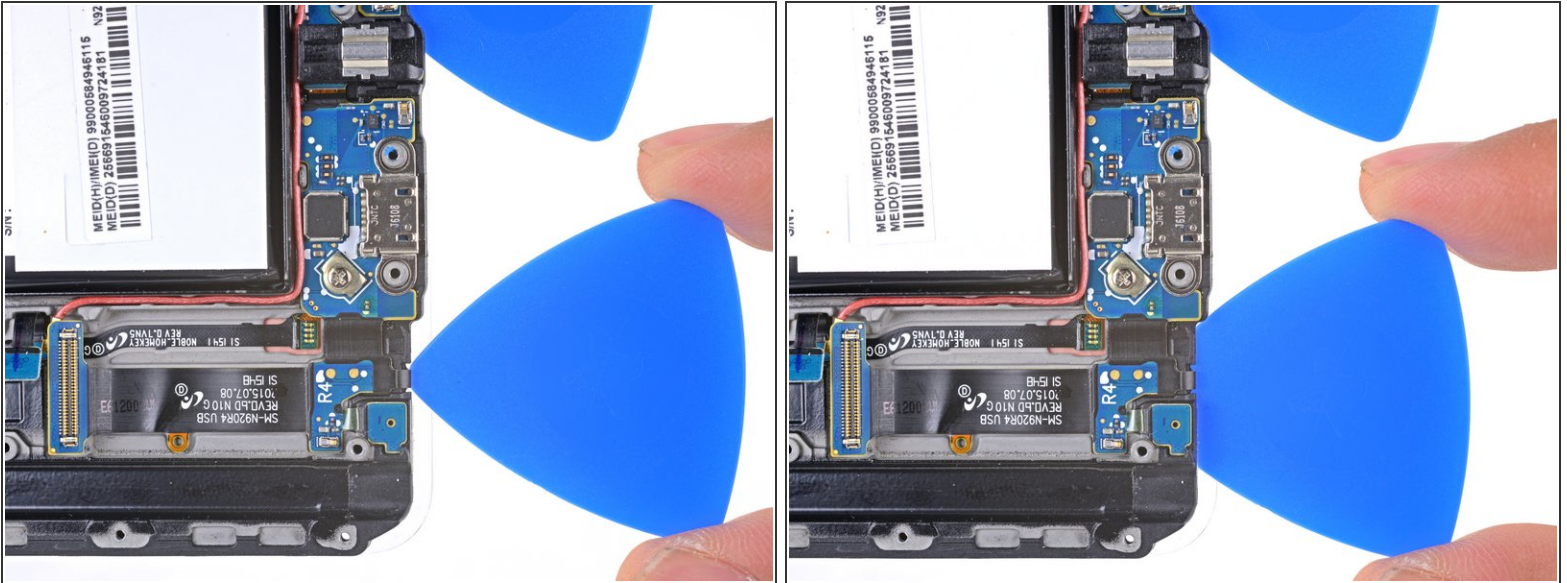
- [Heat an iOpener](#) and apply it to the non-battery-edge of the phone.
- Insert a pick no more than 0.25 inches (~6 mm) into the bottom edge of the phone.
- Carefully slide the pick along the edge, starting at the headphone jack, until you reach just past the charging port.

## Step 26



- Slide an opening pick from the battery edge battery edge of the phone along the edge of the phone to safely cut over the capacitive button.
- Leave the pick in place as you proceed to the next button.

## Step 27



- Insert an opening pick under the bottom edge of the display directly below the daughterboard ribbon cable to cut over the other capacitive button.
- Leave the pick in place.

## Step 28



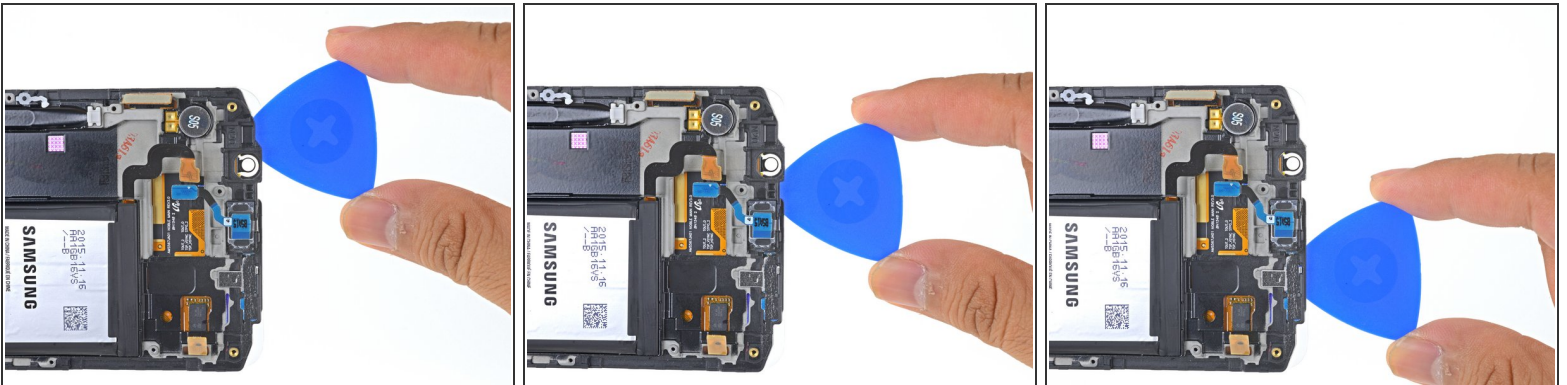
- [Heat an iOpener](#) and apply it to the non-battery-edge of the phone.
- Slide an opening pick down the non-battery-edge of the phone, separating the adhesive.

## Step 29



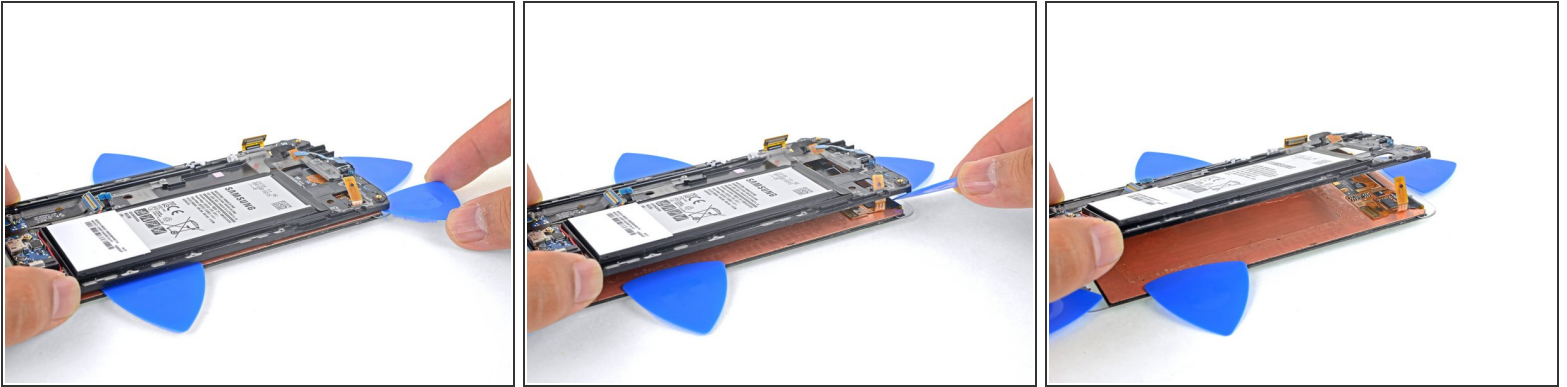
- The non-battery-edge contains a wider swath of adhesive than the other sides. Insert the opening pick as deep as you can to cut through all of it.
- ❗ If cutting is difficult, apply more heat as needed.
- Leave the pick in place to prevent the adhesive from resealing, and grab another pick as you proceed to the next step.

## Step 30



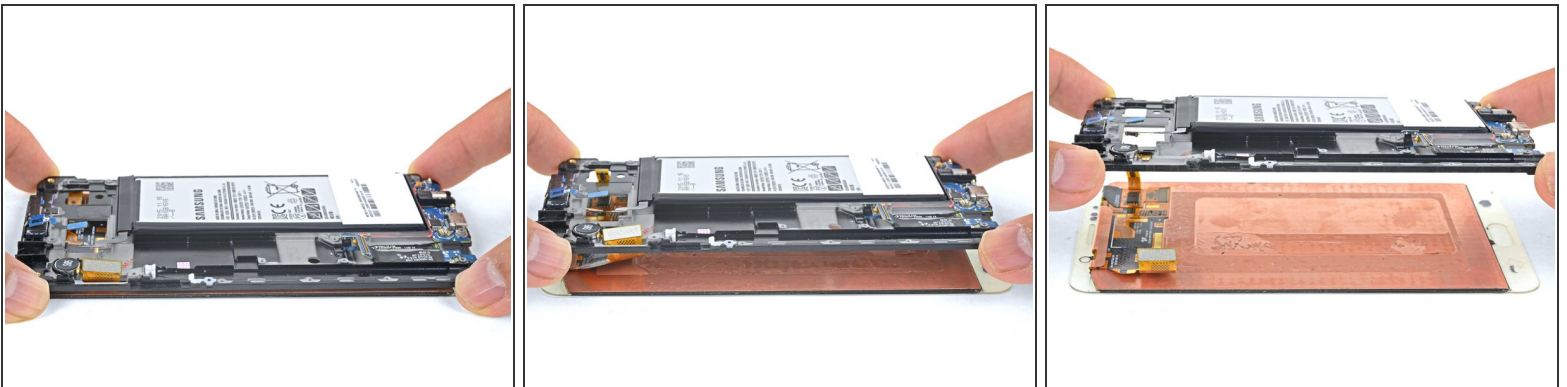
- [Heat an iOpener](#) and apply it to the non-battery-edge of the phone.
- Cut along the top edge of the phone, making sure not to insert the pick more than 0.25 inches (~6 mm) to avoid damaging the front-facing sensors.

## Step 31



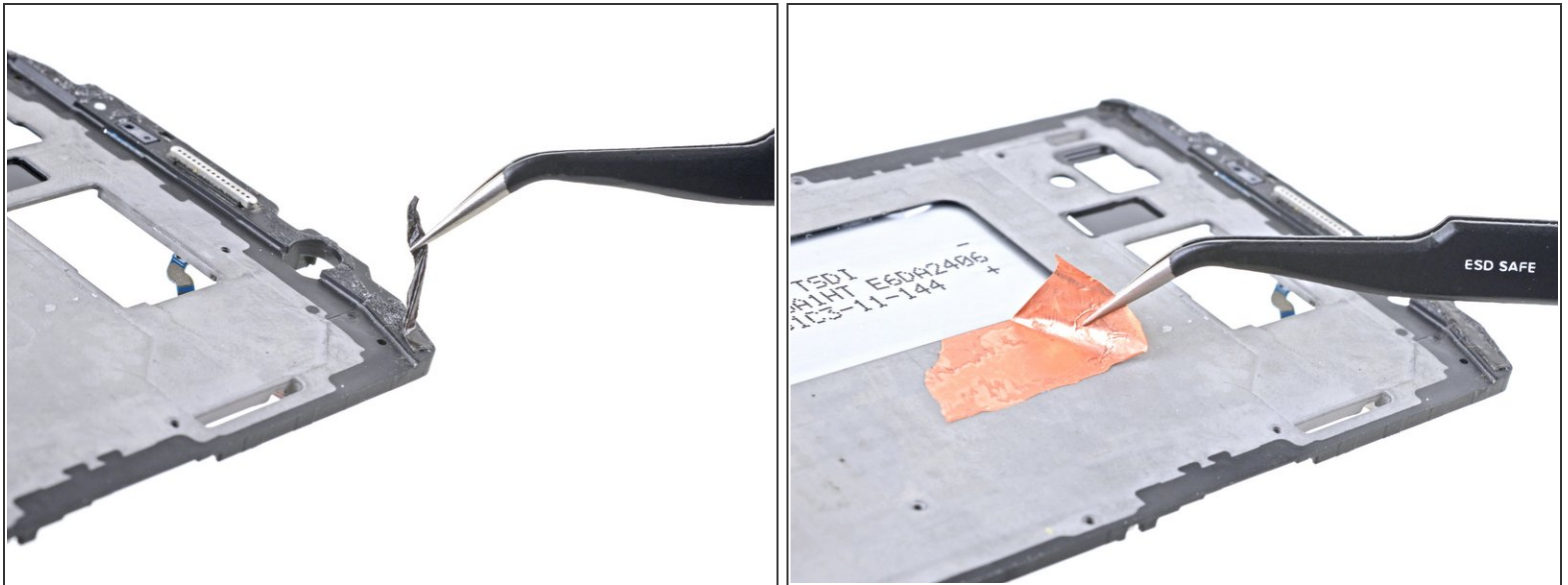
- Use the opening picks to cut any remaining adhesive holding the display to the frame.
- Swing the frame away from the display assembly, threading the touchscreen connector through the frame.




## Step 32



- Lift the frame away from the display assembly, threading the display connector through the frame.
- Remove the frame.

## Step 33



-  Before installing a new display, it's very important to remove all traces of the old adhesive from the frame, while taking special care to remove any small glass fragments or other debris.
- After removing all traces of glue and glass from the frame, clean the adhesion areas with 90% (or higher) isopropyl alcohol and a lint-free cloth or coffee filter. Swipe in one direction only, not back and forth.
-  This helps remove any remaining adhesive residue and preps the surface for the new display.
-  If the frame is bent, or if any glue or glass remnants are left behind, the new display will not mount correctly and may be damaged.

Compare your new replacement part to the original part. You may need to transfer remaining components or remove adhesive backings from the new part before installing.

To reassemble your device, follow the above steps in reverse order. [Take your e-waste to an R2 or e-Stewards certified recycler.](#)

Repair didn't go as planned? Check out our [Answers community](#) for troubleshooting help.