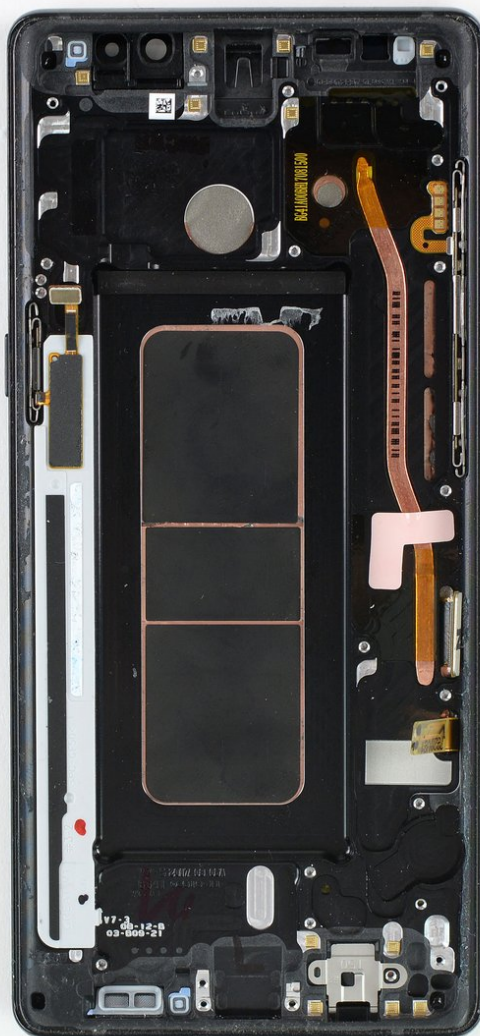




Samsung Galaxy Note8 Display Assembly with Frame Replacement

This guide shows you how to replace a broken or defective display including the frame on the Samsung Galaxy Note8.

Written By: Dominik Schnabelrauch



INTRODUCTION

Use this guide to replace the display assembly including the frame of your Galaxy Note8.

Before disassembling your phone, discharge the battery below 25%. The battery can catch fire and/or explode if accidentally punctured, but the chances of that happening are much lower if discharged.

This guide involves removing the rear glass cover; you will need replacement adhesive to reattach the back cover to the phone.

Opening the Samsung Galaxy Note8 will **damage the waterproof seals** on the device. If you do not replace the adhesive seals, your phone will function normally, but will lose its water resistance.



TOOLS:

- [iOpener](#) (1)
- [Suction Handle](#) (1)
- [iFixit Opening Picks set of 6](#) (1)
- [Tweezers](#) (1)
- [Phillips #00 Screwdriver](#) (1)
- [Spudger](#) (1)



PARTS:

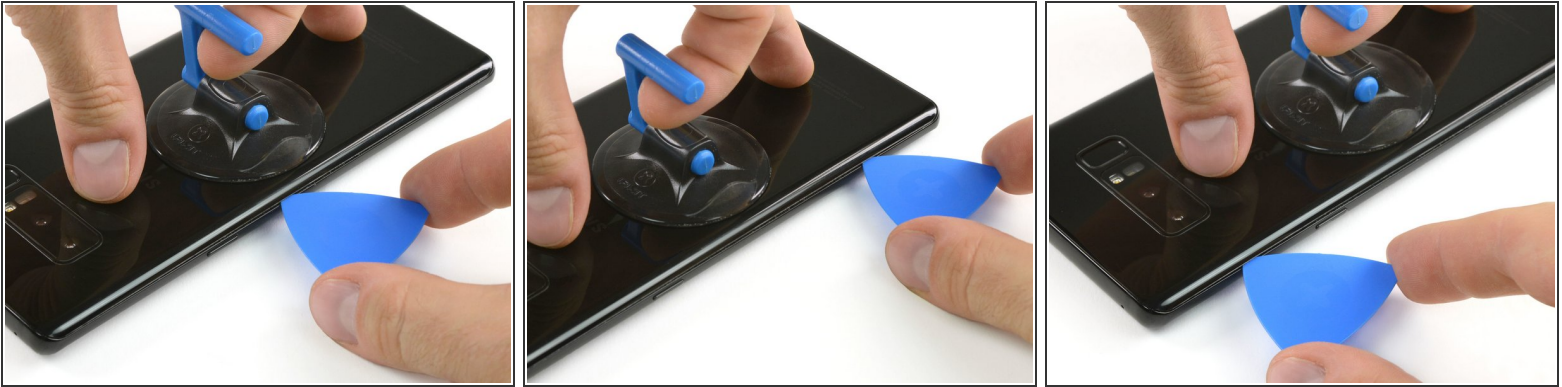
- [Galaxy Note8 Screen](#) (1)

Step 1 — Back Cover



- Switch off your phone.
- [Prepare an iOpener](#) for softening the adhesive on the back of the Note8.
- Apply the iOpener on the back of the Note8 along the side with the power button.

Step 2



- Use a suction handle to lift the back cover and an opening pick to get in the gap.
 - ❗ Since the back cover is also slightly curved at the edges you want to insert the opening pick at a lower angle from underneath.
- Start at the middle of the side and cut the adhesive while pulling up with the suction handle.
 - ⚠ Be careful not to lever the opening pick too much to avoid breaking the back cover. Rather pull with the suction handle and use the pick for cutting the adhesive.
- Move the pick towards the bottom corner and leave it there to keep the adhesive from resealing to the case.
- Use another pick and move it to the top corner.
 - ❗ If it's getting harder to move the pick you might need to reheat the iOpener and apply it to the back cover again.

Step 3



- Again take another opening pick and carefully move it around the corner and along the top edge.
- Reheat with an iOpener if necessary.
- Leave the pick at the top right corner to keep the adhesive from resealing.

Step 4



- Rotate the device and start to separate the adhesive at the bottom with another opening pick.
- Leave the pick at the bottom right corner to keep the adhesive from resealing.

Step 5



- When the adhesive has been separated on all three sides properly you will be able to slowly lift the back cover.
 - ⚠ Don't force it open. Use an iOpener to again soften the adhesive if the back cover won't come off or starts to bend.
- Pay attention to the fingerprint sensor connector when flipping the back cover open. You might need to disconnect it as described in the next step.

Step 6



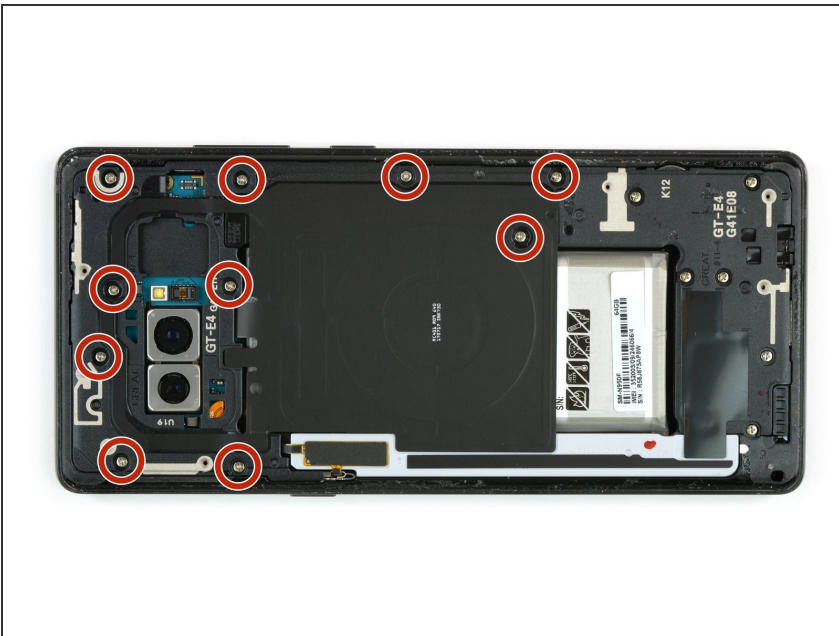
- Use a pair of tweezers to disconnect the fingerprint sensor.
 - ⓘ The connector might already have come off when flipping the back cover open.

Step 7



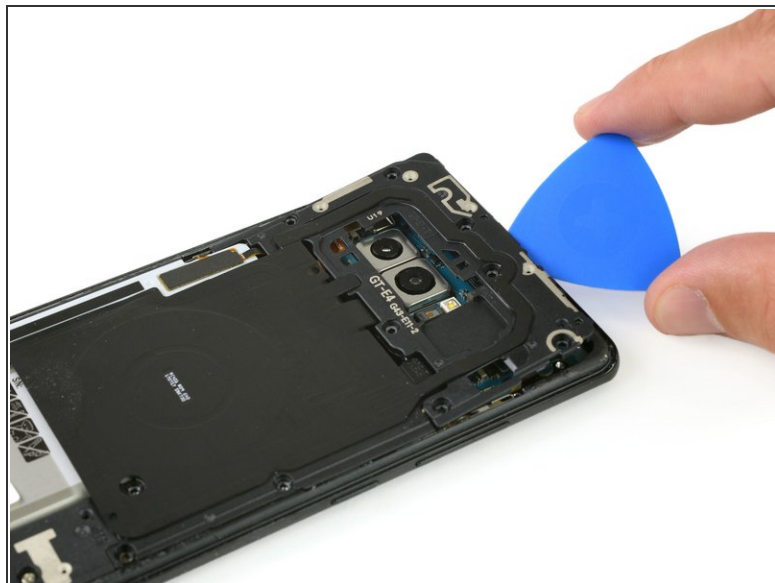
- Remove the back cover.
- ★ To prepare for the reassembly remove any remaining adhesive from the phone, and clean the glued areas with isopropyl alcohol and a lint-free cloth.

Step 8 — NFC Antenna and Charging Coil Assembly



- Remove the ten Phillips #00 screws.

Step 9



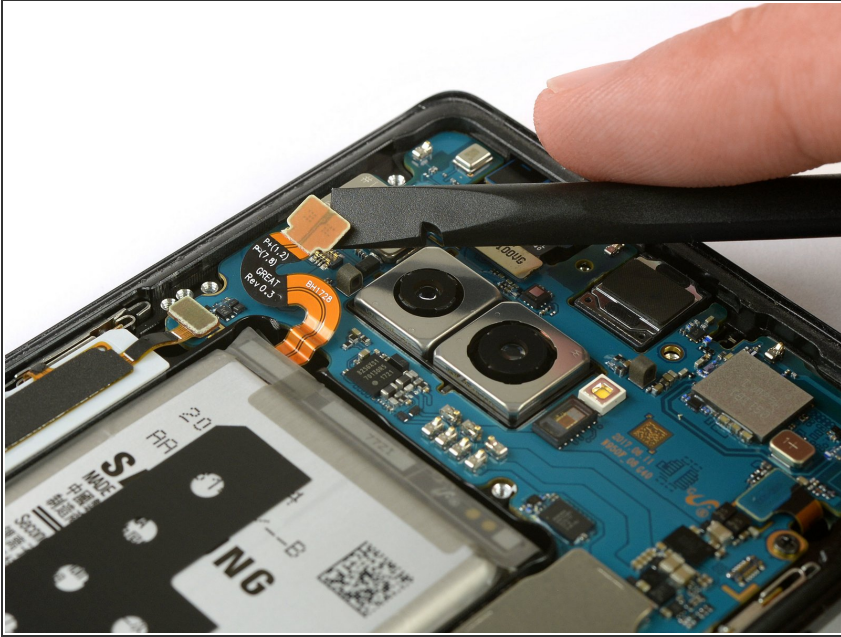
- Use an opening pick at the top edge to get between the NFC antenna and charging coil assembly and the case.
- Lever the top of the assembly out of the case.

Step 10



- Carefully pull up the complete charging coil and NFC antenna assembly.
- ⚠ The bottom left part of the assembly is slightly glued down to the frame.

Step 11 — Battery Disconnect



- Use the flat end of a spudger to disconnect the battery connector.

Step 12 — Battery

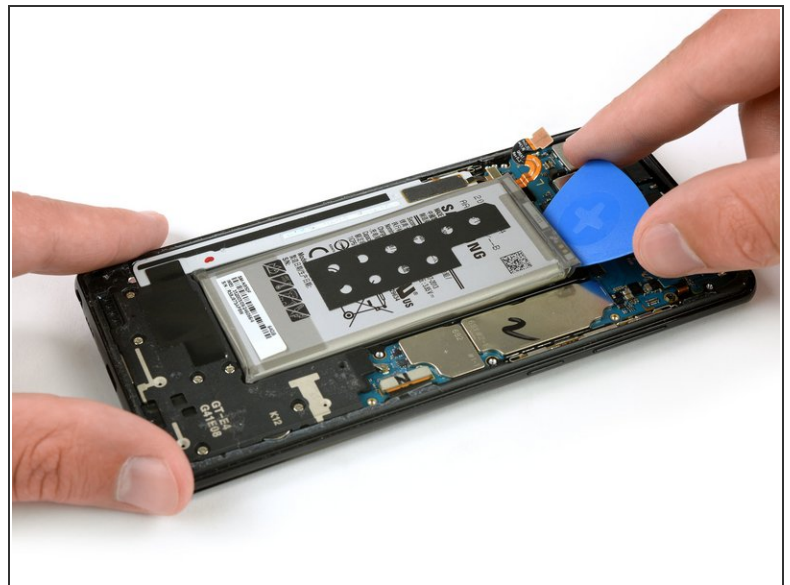
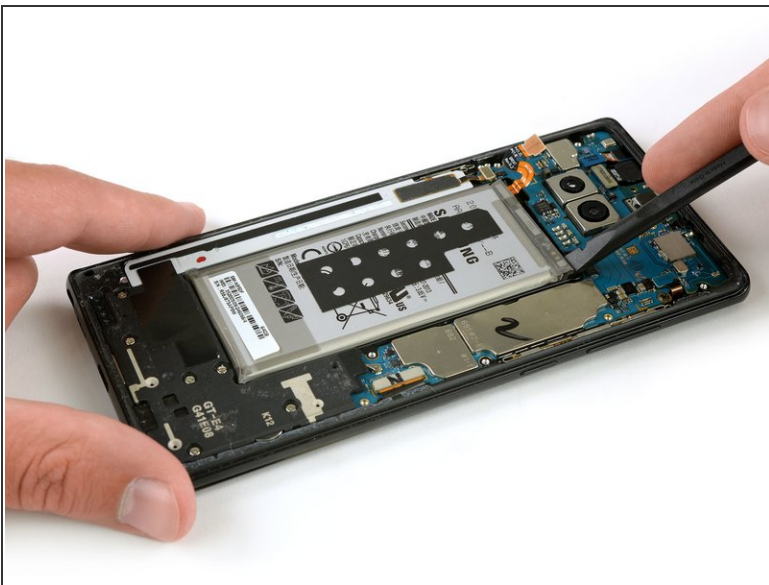


- [Prepare an iOpener](#) and apply it to the display for at least two minutes to loosen the adhesive beneath the


battery. Reheat and reapply the iOpener as needed.


- Alternatively or when the battery is blown up, you can apply some isopropyl alcohol under each corner of the battery and allow it to penetrate for several minutes to help weaken the adhesive.

Step 13




- Use the flat end of a spudger to pry up the battery from the top right corner.

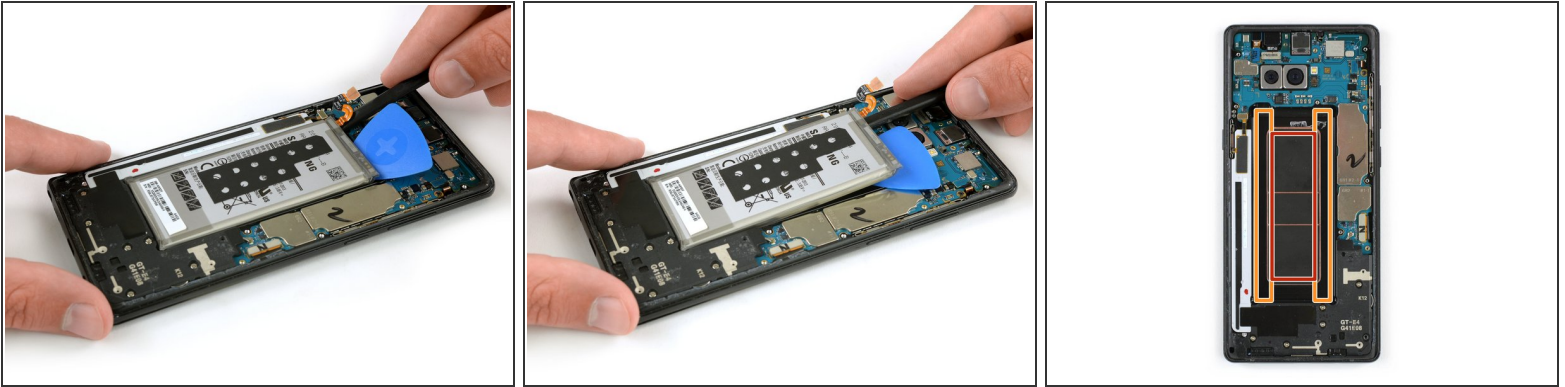
 You will be prying against the case directly above the mainboard. Pry carefully to avoid damaging any close components.

-  You may need to reheat and reapply the iOpener repeatedly to further soften the adhesive. The adhesive is tough and it may take a few tries to get the spudger started under the battery.

- Use the spudger to pry up the battery until you can insert an opening pick to prevent the adhesive from resealing.

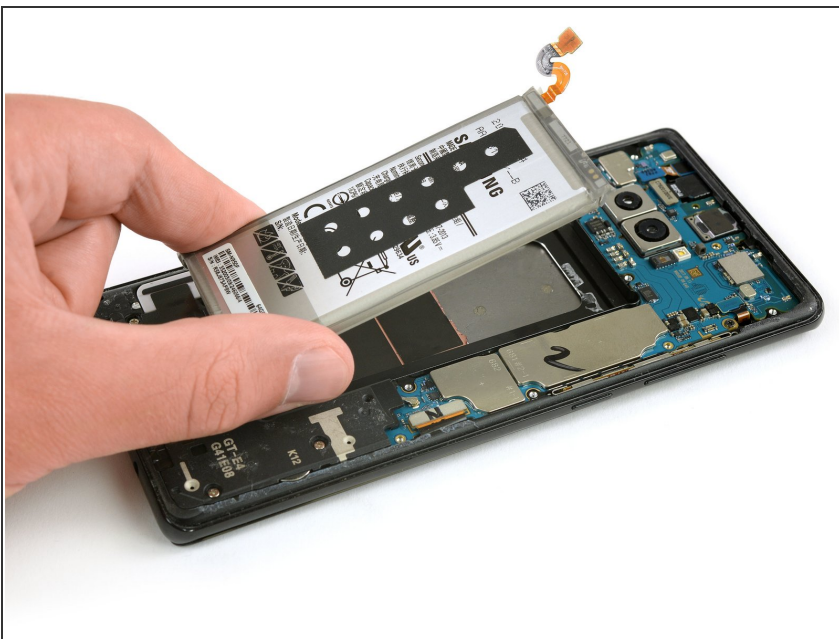
 Try your best not to deform the battery during this process. Soft-shell lithium-ion batteries can leak dangerous chemicals, catch fire, or even explode if damaged. Do not use excessive force or pry at the battery with metal tools.

Step 14



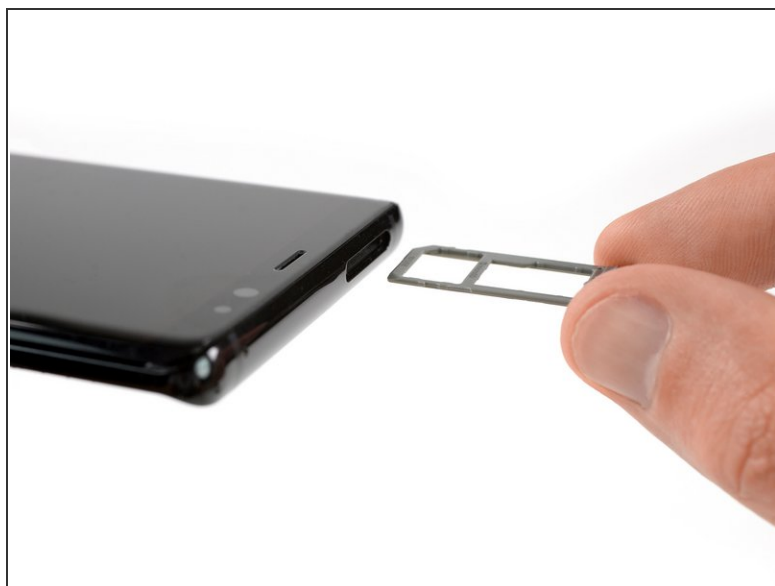
- Use the flat end of the spudger to pry up the top left corner of the battery where the flex cable is located.
- Slide the spudger along the side of the battery to break apart remaining adhesive.
- ⓘ When prying keep to the areas marked orange. Avoid the red area in the middle which is the back of the display.

Step 15



- Lift the battery out of the case.
- ⚠ Do not reuse the battery after it has been removed, as doing so is a potential safety hazard. Replace it with a new battery.
- Remove any remaining adhesive from the phone, and clean the glued areas with isopropyl alcohol and a lint-free cloth.
- ★ [Follow this guide](#) to install battery adhesive.
- ★ [Follow this guide](#) to install custom-cut adhesives.

Step 16 — Motherboard prereq



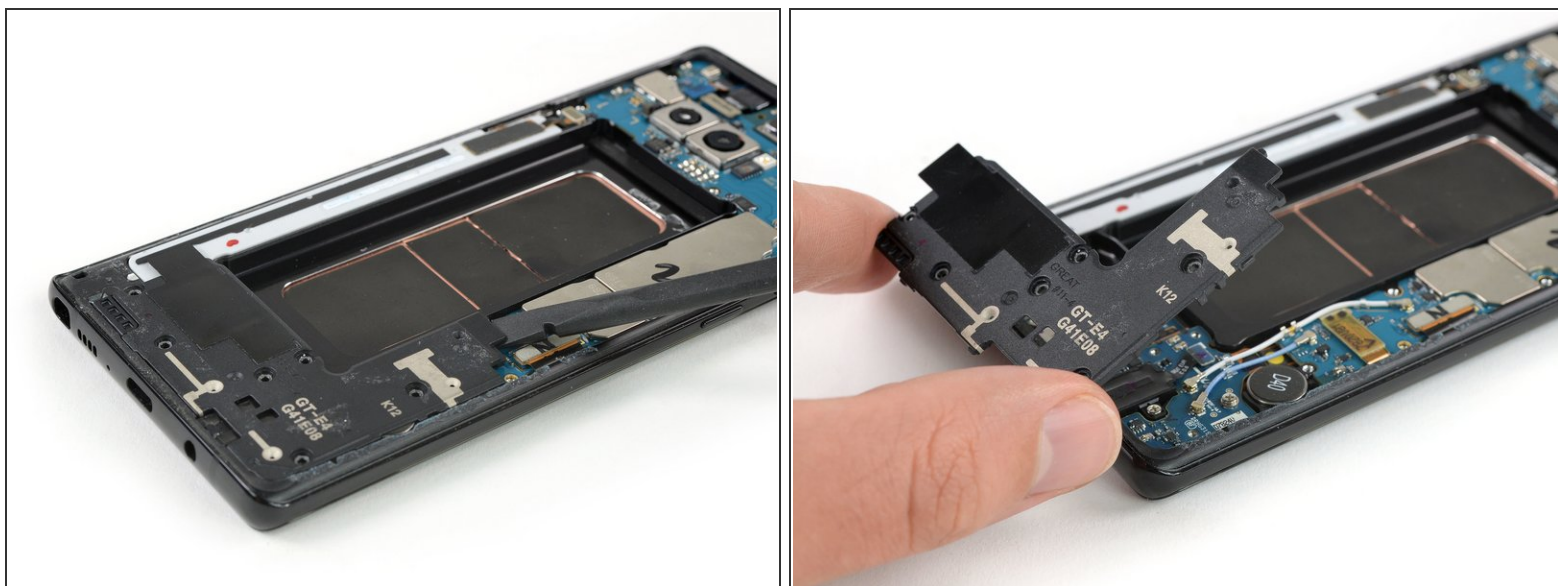
- Insert a SIM card opening tool into the small hole on the left side of the top edge of the phone.
- Press to eject the tray.
- Remove the SIM card tray from the phone.

Step 17



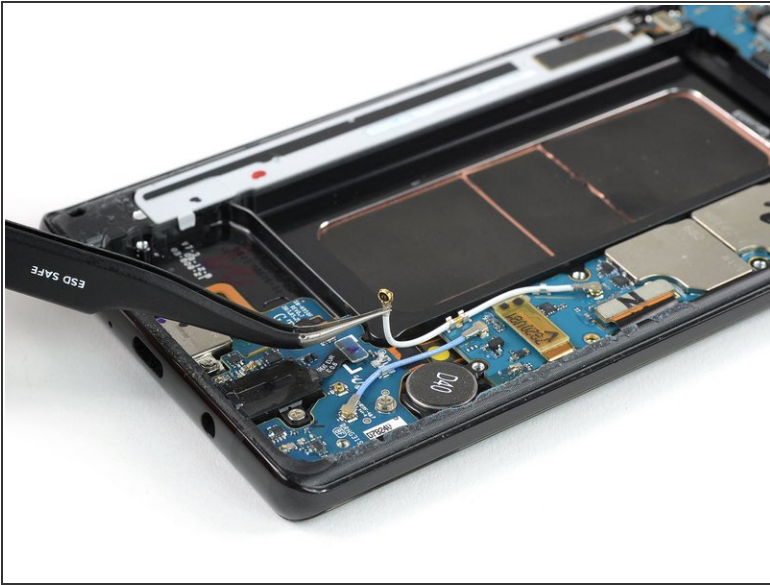
- Remove the six Phillips #00 screws on the loudspeaker assembly at the bottom of the phone.

Step 18



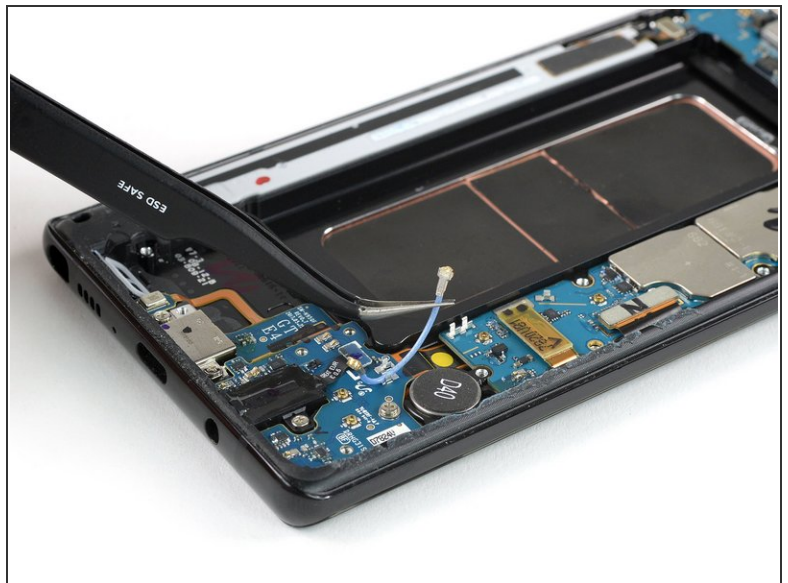
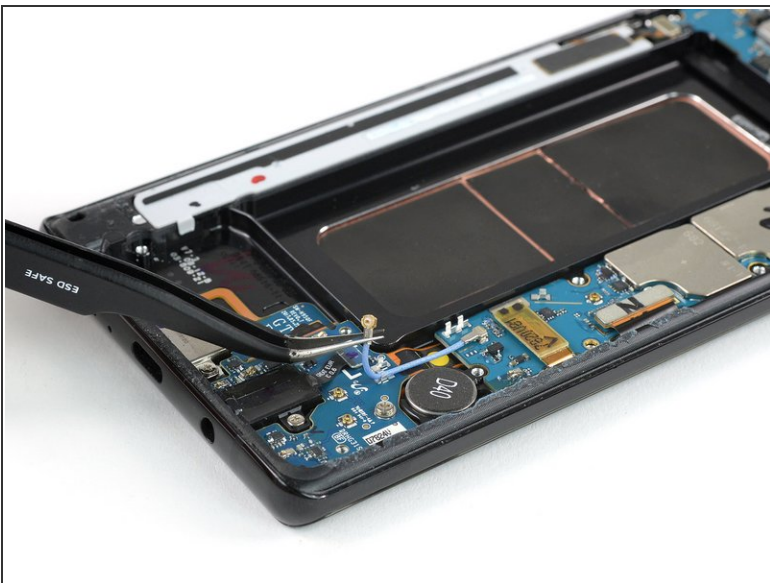
- Use the flat end of a spudger to pry up the loudspeaker assembly.
- ⚠ You will be prying above the mainboard and the antenna cable. Pry carefully to avoid damaging any close components.
- Remove the loudspeaker assembly.

Step 19



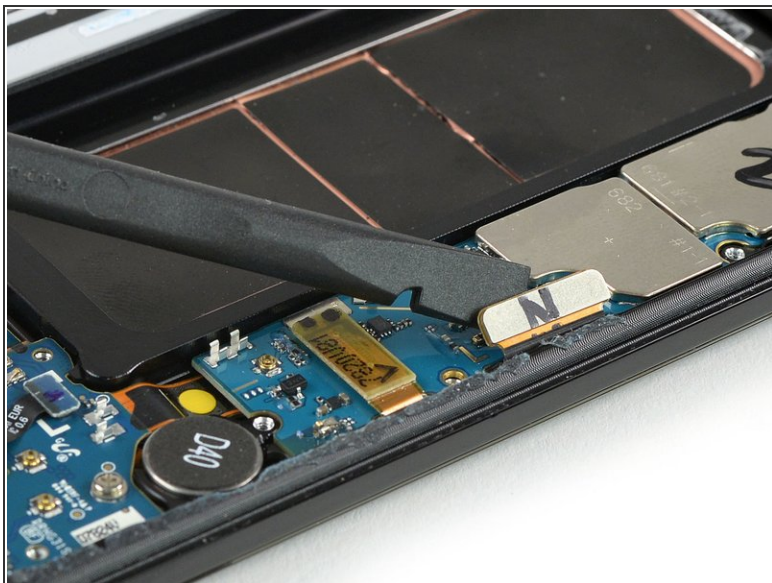
- Remove the two coax cables running from the daughterboard to the motherboard.
 - ❗ If you want to replace your display assembly with frame it is not absolutely necessary to remove the coax cables. However we advise to do so to avoid damage or tension on them.
- Use a pair of tweezers to carefully disconnect both ends of the white coax cable and remove it.

Step 20



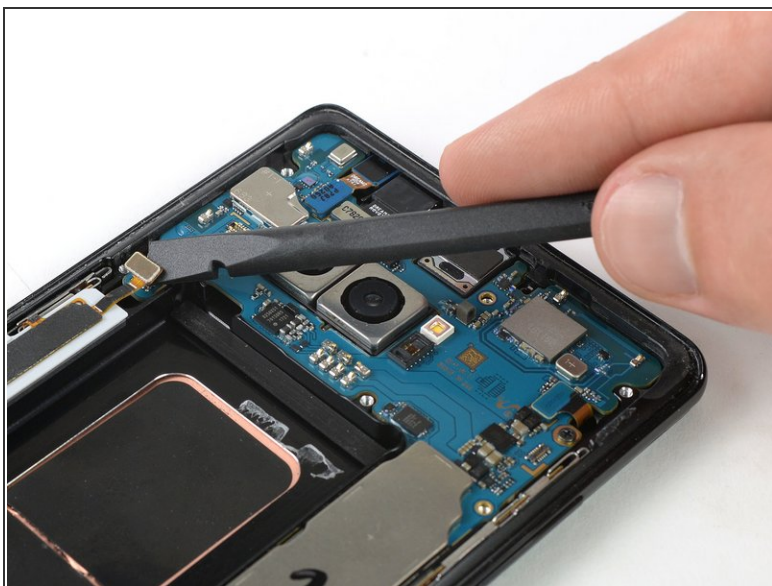
- Use a pair of tweezers to carefully disconnect both ends of the blue coax cable and remove it.

Step 21



- Use the flat end of a spudger to disconnect both the display and the touchscreen cables.

Step 22



- Use the flat end of a spudger to disconnect the power button flex cable.
- Disconnect the flash and proximity sensor cable.

Step 23



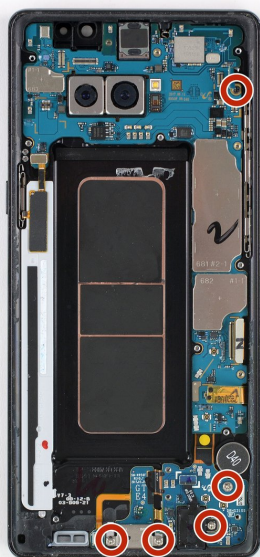
- Use the flat end of a spudger to disconnect the flex connector of the front facing camera.
- Carefully remove the front facing camera with a pair of tweezers.

Step 24



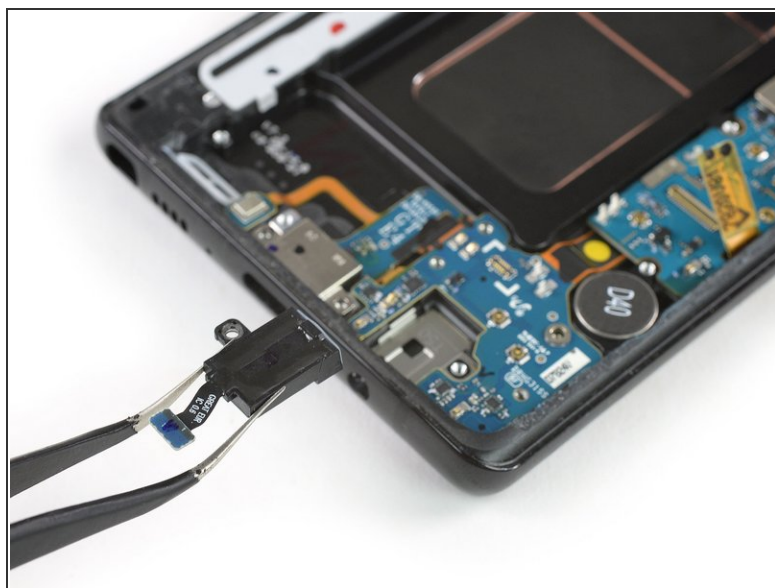
- Use the flat end of a spudger to disconnect the flex connector of the iris scanner.
- Carefully remove the iris scanner with a pair of tweezers.

Step 25



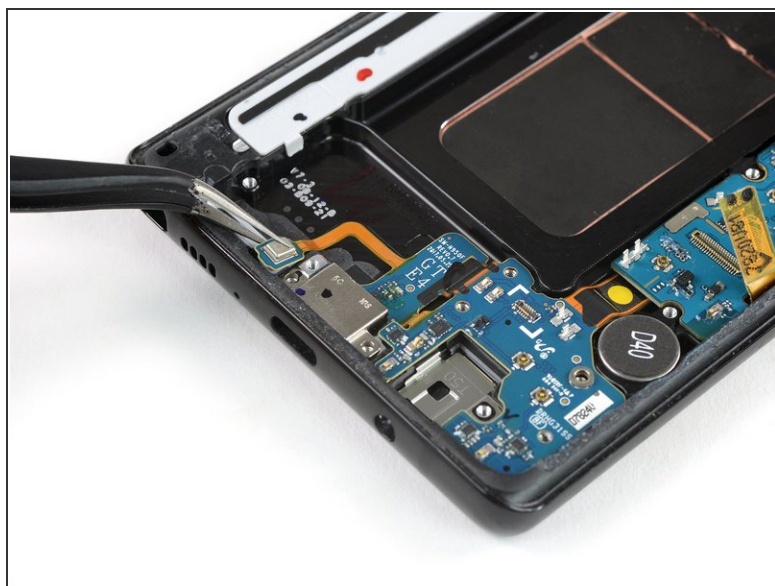
- Remove the five Phillips #00 screws that hold down the motherboard, daughterboard, headphone jack and the charging port.

Step 26




- Use the flat end of a spudger to disconnect the headphone jack flex connector.
- Carefully remove the headphone jack with a pair of tweezers.

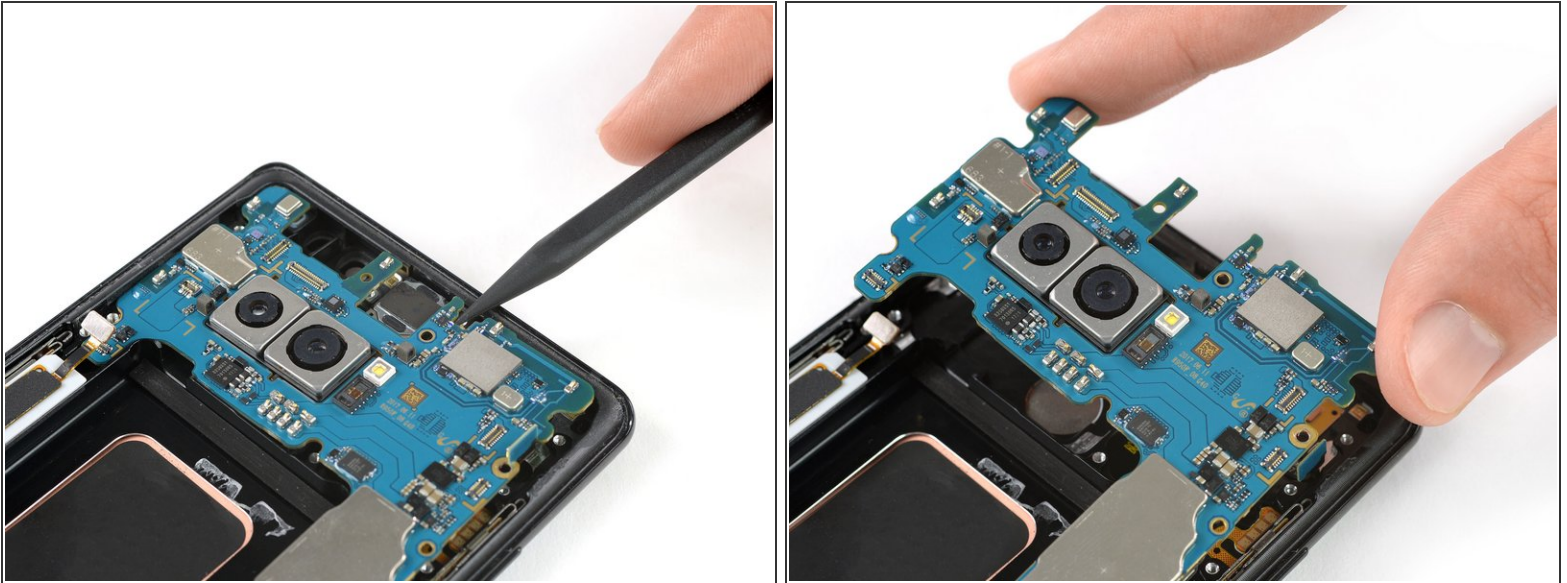
Step 27



- [Prepare an iOpener](#) and apply it to the bottom part of the phone to loosen the adhesive beneath the microphone flex cable.
- Use a pair of tweezers to carefully lift the microphone out of its recess and loosen it from the mid frame.

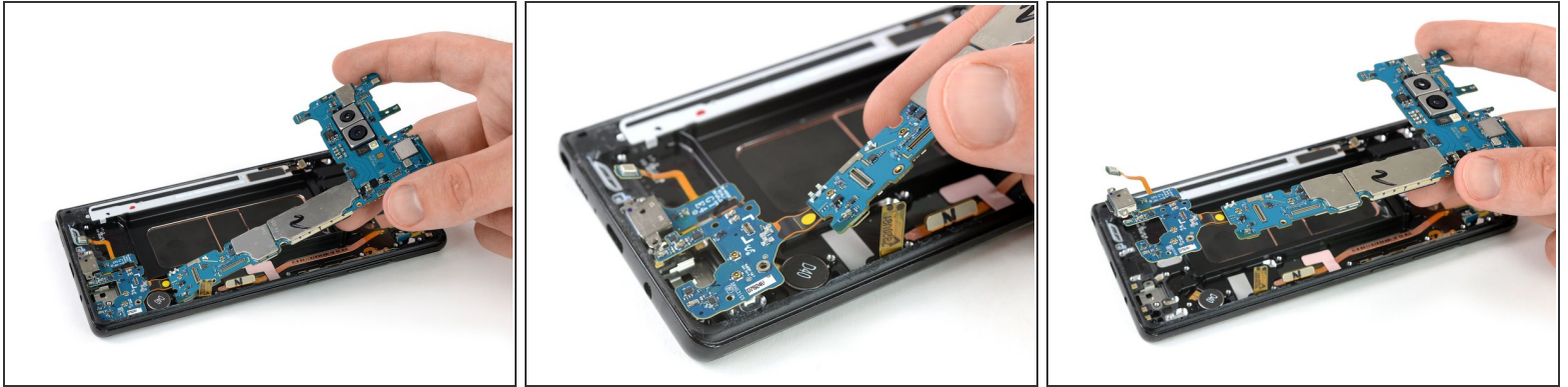
 Do not remove the microphone. It is still attached to the daughterboard.

Step 28



- ⓘ It is possible to remove the motherboard whilst keeping the daughterboard in its place. However the flex connector of the daughterboard sits on the backside of the motherboard and it's a bit of a fumbling to disconnect it while you're holding the motherboard in your hand.
- ⚠ In case you're planning to remove the motherboard without the daughterboard take especially care not to damage any surrounding components whilst disconnecting the flex cable.
- Use the pointed end of a spudger to pry up the motherboard until you can get a good grip.
- ⓘ The motherboard sits loosely on the mid frame so there are different positions to place the spudger and to pry it up. Avoid to damage any surrounding components.

Step 29



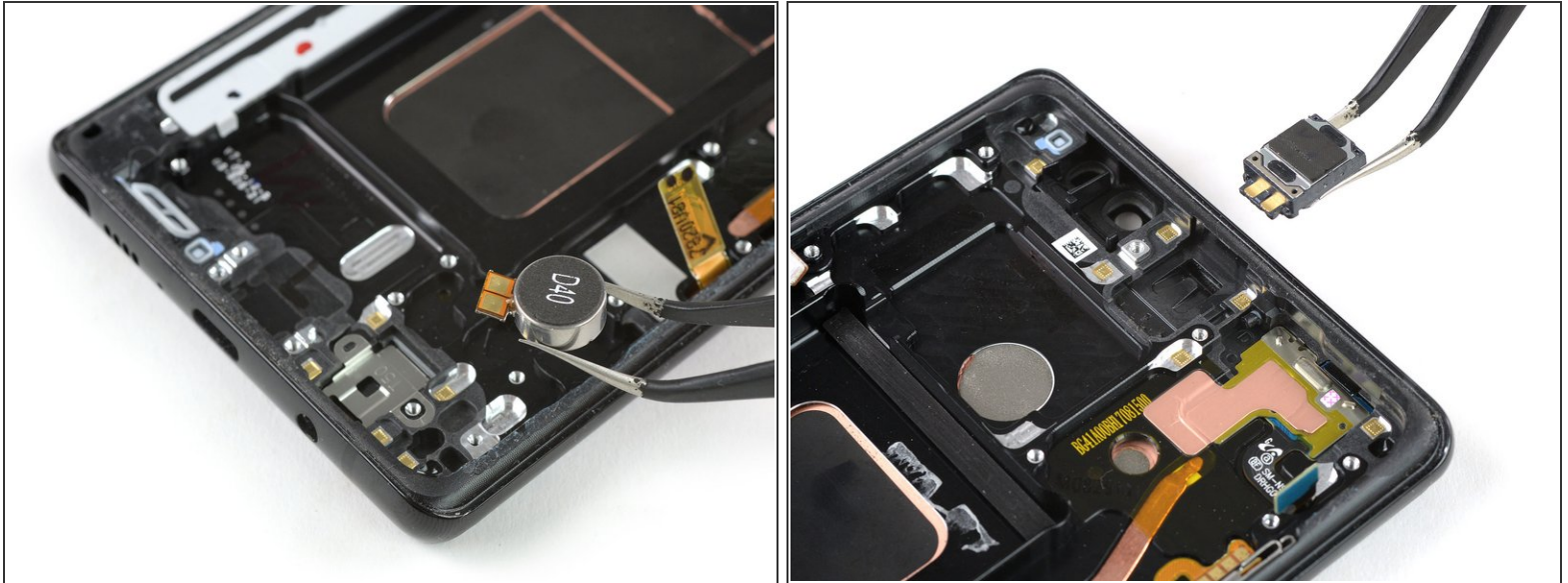
- Carefully lift up the motherboard.
- To lift the daughterboard out of its recess pull both components slowly towards the upper end of the phone whilst lifting upwards.

Step 30 — Display Assembly with Frame



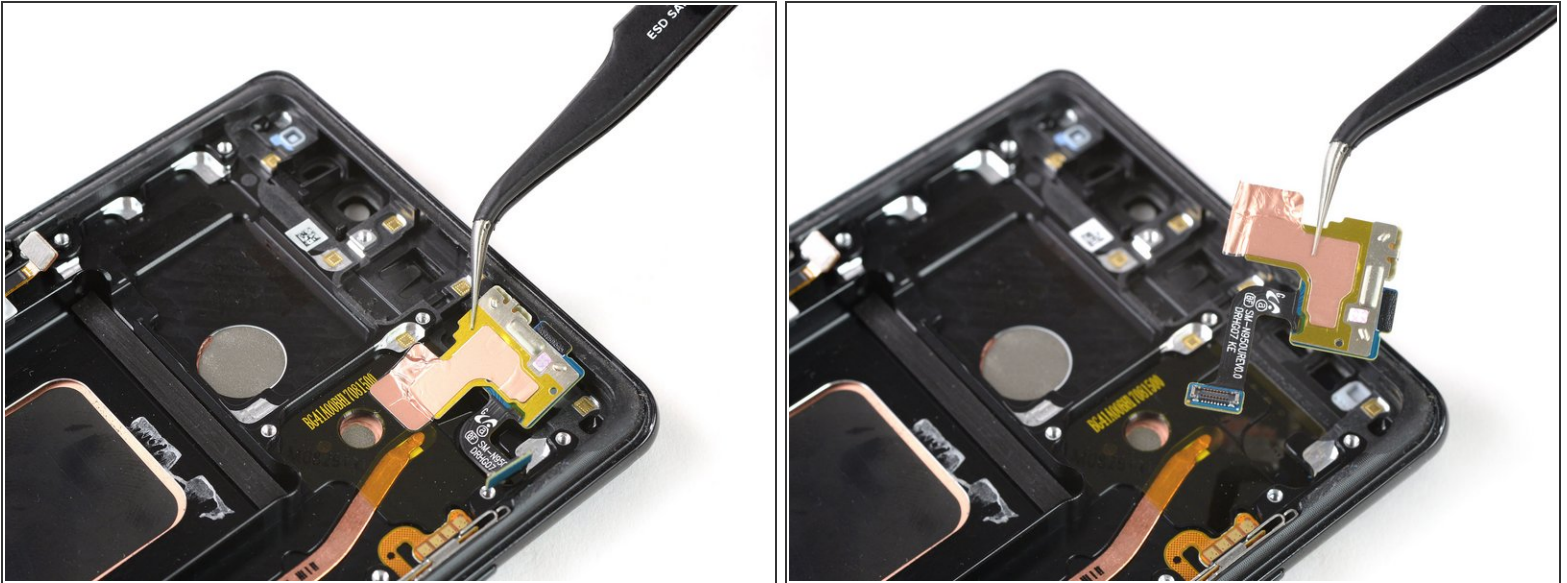
- [Prepare an iOpener](#) and apply it across the phone to loosen the adhesive beneath the vibration motor at the bottom and the earpiece speaker at the top.

Step 31



- Carefully remove the vibration motor with a pair of tweezers. Keep an eye on its cable to not accidentally rip it.
- Remove the earpiece speaker with a pair of tweezers.
- ⓘ Check if your replacement display assembly comes with an earpieces speaker already attached to it. If so, there's no need to remove it, but maybe you want to keep it as a spare replacement part.

Step 32



- Use a pair of tweezers to lift up the flash and proximity sensor cable and carefully loosen the tape holding it down to the mid frame.
- Remove the flash and proximity sensor assembly.

Step 33



- To reassemble your phone transfer all components you removed to the new display assembly with frame. Reapply adhesive where it's necessary.

If possible, turn on your phone and test your repair before installing new adhesive and resealing the phone.

Follow these instructions in reverse order to reassemble your device. Apply new adhesive where necessary.