



# Samsung Galaxy Note8 NFC Antenna and Charging Coil Assembly Replacement

Replace a broken NFC antenna and charging coil assembly in the Samsung Galaxy Note8.

Written By: Tobias Isakeit



## INTRODUCTION

Use this guide to replace a broken NFC antenna and charging coil assembly in the Samsung Galaxy Note8.

**Before disassembling your phone, discharge the battery below 25%. The battery can catch fire and/or explode if accidentally punctured, but the chances of that happening are much lower if discharged.**

**If your battery is swollen, do not heat your phone** . If needed, you can use a dropper or syringe to inject isopropyl alcohol (90+%) around the edges of the back cover to weaken the adhesive. Swollen batteries can be very dangerous, so wear eye protection and exercise due caution, or take it to a professional if you're not sure how to proceed.

Opening the Samsung Galaxy Note8 will **damage the waterproof sealing** on the device. If you do not replace the adhesive seals, your phone will **function normally**, but will **lose water-protection**.

This guide involves removing the rear glass cover, you will need replacement adhesive to reattach the back cover to the phone.



### TOOLS:

- [iOpener](#) (1)
- [Suction Handle](#) (1)
- [iFixit Opening Picks set of 6](#) (1)
- [Tweezers](#) (1)
- [Phillips #00 Screwdriver](#) (1)



### PARTS:

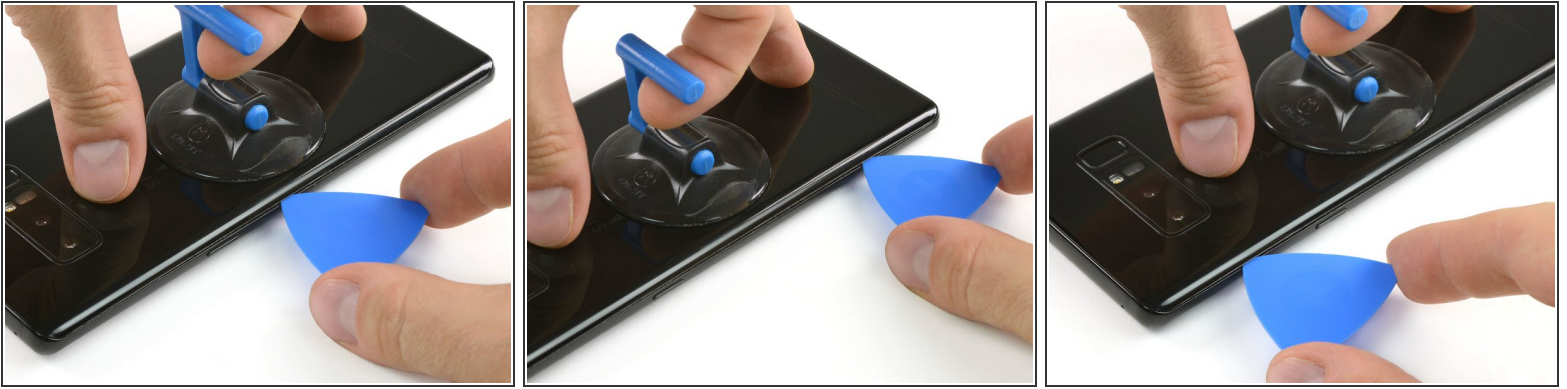
- [Galaxy Note8 Wireless Charging Coil](#) (1)
- [Galaxy Note8 Rear Cover Adhesive](#) (1)

## Step 1 — Back Cover



- Switch off your phone.
- [Prepare an iOpener](#) for softening the adhesive on the back of the Note8.
- Apply the iOpener on the back of the Note8 along the side with the power button.

## Step 2



- Use a suction handle to lift the back cover and an opening pick to get in the gap.
  - ❗ Since the back cover is also slightly curved at the edges you want to insert the opening pick at a lower angle from underneath.
- Start at the middle of the side and cut the adhesive while pulling up with the suction handle.
  - ⚠ Be careful not to lever the opening pick too much to avoid breaking the back cover. Rather pull with the suction handle and use the pick for cutting the adhesive.
- Move the pick towards the bottom corner and leave it there to keep the adhesive from resealing to the case.
- Use another pick and move it to the top corner.
  - ❗ If it's getting harder to move the pick you might need to reheat the iOpener and apply it to the back cover again.

### Step 3



- Again take another opening pick and carefully move it around the corner and along the top edge.
- Reheat with an iOpener if necessary.
- Leave the pick at the top right corner to keep the adhesive from resealing.

### Step 4



- Rotate the device and start to separate the adhesive at the bottom with another opening pick.
- Leave the pick at the bottom right corner to keep the adhesive from resealing.



## Step 5



- When the adhesive has been separated on all three sides properly you will be able to slowly lift the back cover.
- ⚠ Don't force it open. Use an iOpener to again soften the adhesive if the back cover won't come off or starts to bend.
- Pay attention to the fingerprint sensor connector when flipping the back cover open. You might need to disconnect it as described in the next step.

## Step 6



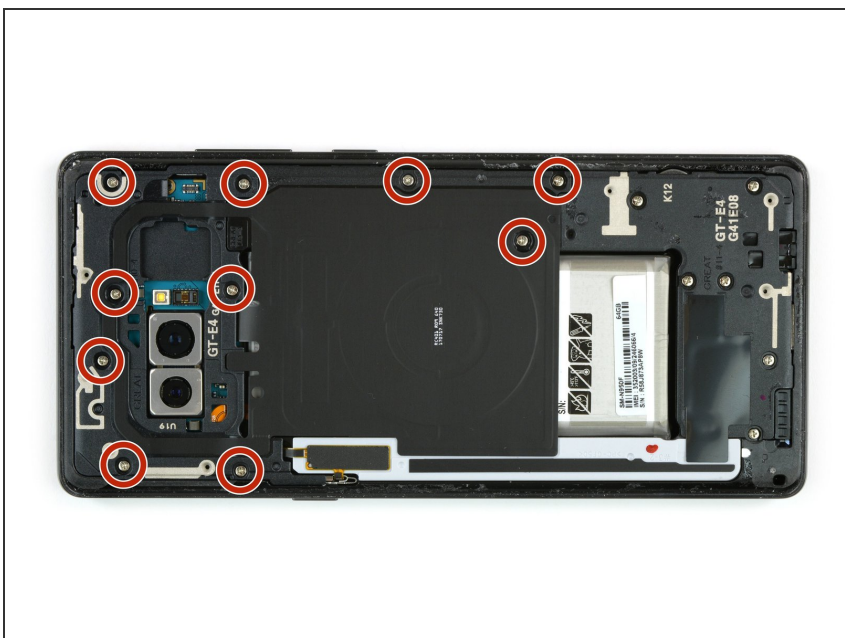
- Use a pair of tweezers to disconnect the fingerprint sensor.
- ⓘ The connector might already have come off when flipping the back cover open.

## Step 7



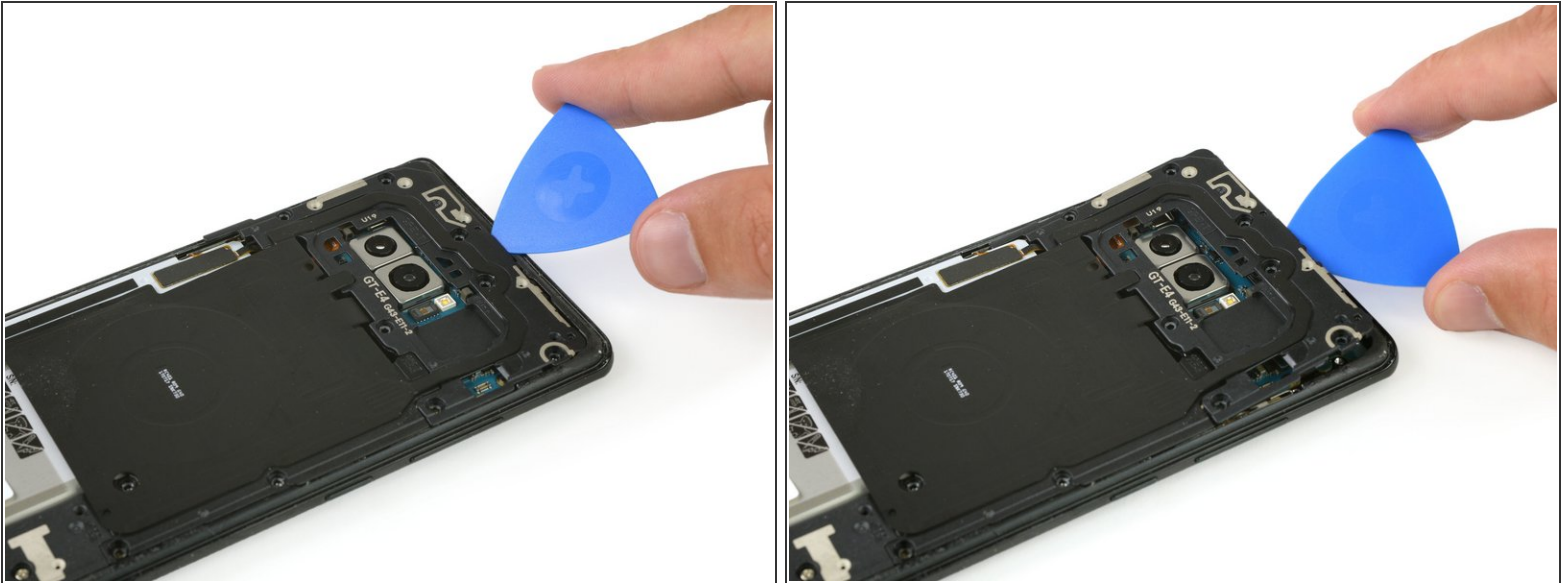
- Remove the back cover.
- ★ To prepare for the reassembly remove any remaining adhesive from the phone, and clean the glued areas with isopropyl alcohol and a lint-free cloth.

## Step 8 — NFC Antenna and Charging Coil Assembly



- Remove the ten Phillips #00 screws.

## Step 9



- Use an opening pick at the top edge to get between the NFC antenna and charging coil assembly and the case.
- Lever the top of the assembly out of the case.

## Step 10



- Carefully pull up the complete charging coil and NFC antenna assembly.
- ⚠ The bottom left part of the assembly is slightly glued down to the frame.



To reassemble your device, follow these instructions in reverse order. Apply new adhesive where it is necessary.