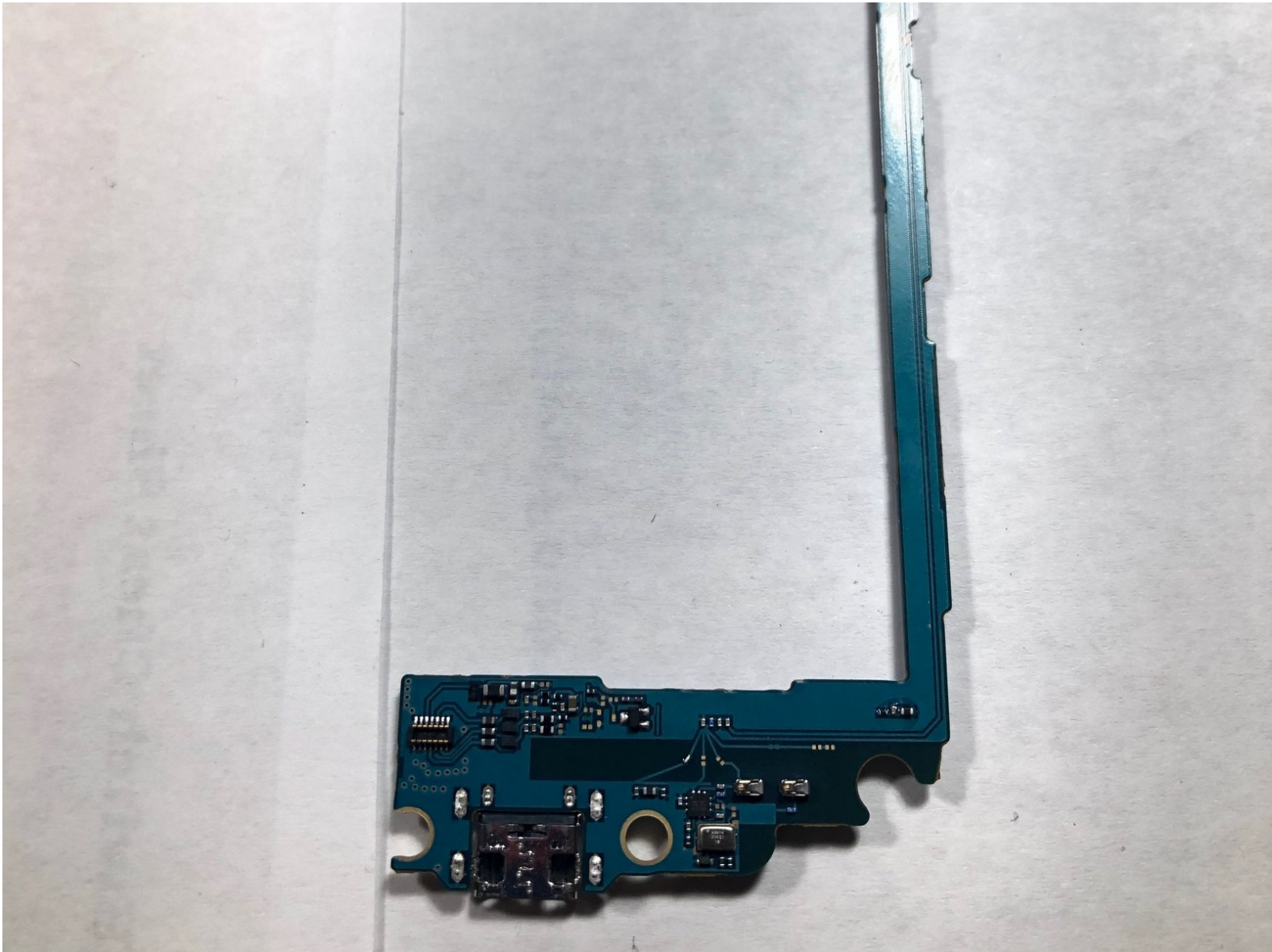




Samsung Galaxy On5 Motherboard Replacement

Replacement steps for the Samsung Galaxy On5 motherboard.

Written By: The Dark Night part 2



INTRODUCTION

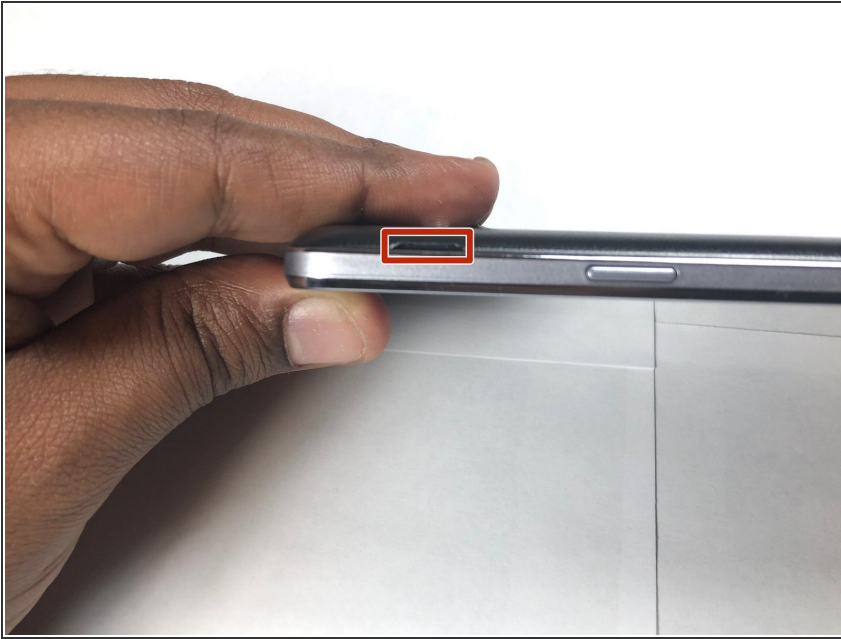
The mini-USB connection that comes on the Samsung Galaxy On5 is as normal as they come. There's nothing different about the connect, but one thing and that's you have to replace the logic board.



TOOLS:

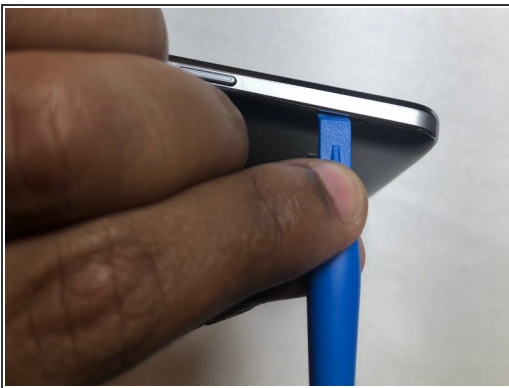
- [iFixit Opening Tools](#) (1)
 - [Spudger](#) (1)
 - [iFixit Opening Picks set of 6](#) (1)
-

Step 1 — Battery



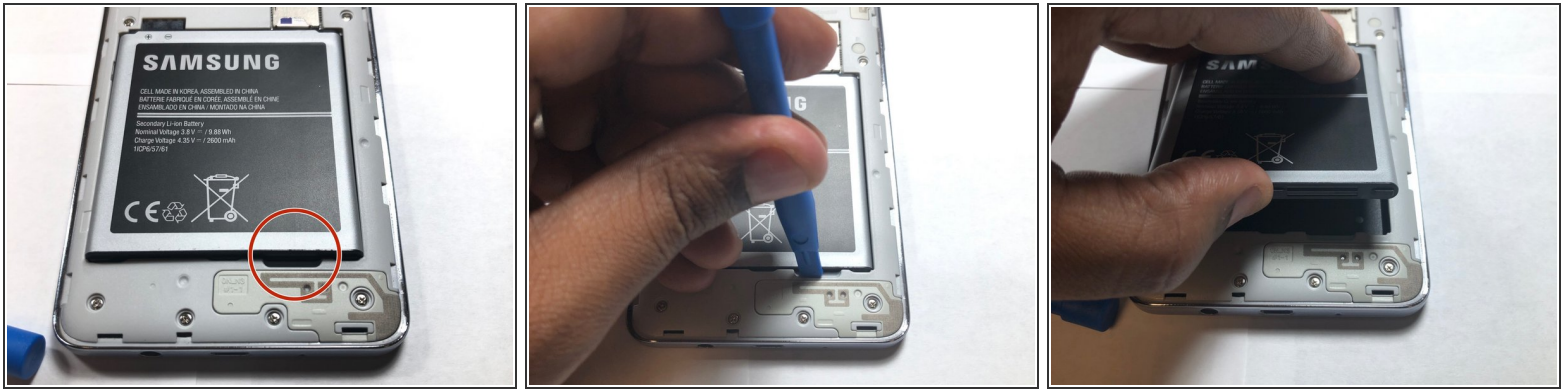
- Locate the side notch that allows you to open the back casing.

Step 2



- Use a plastic prying tool or your fingernail to pop the back cover off the phone.

Step 3



- Locate the battery notch to remove the battery
- ⚠ Be careful not puncture the battery. Lithium-ion batteries are highly flammable when exposed to oxygen.
- Use a plastic prying tool or your fingernail to remove the battery from its housing and pull it aside.

Step 4 — Speaker



Before disassembling the phone take out the SIM card and microSD card.



Use a plastic pry tool to slide both cards out.





Do not use a metal pry tool. Use of one can cause damage to the cards or the pins with the cards holder.

Step 5

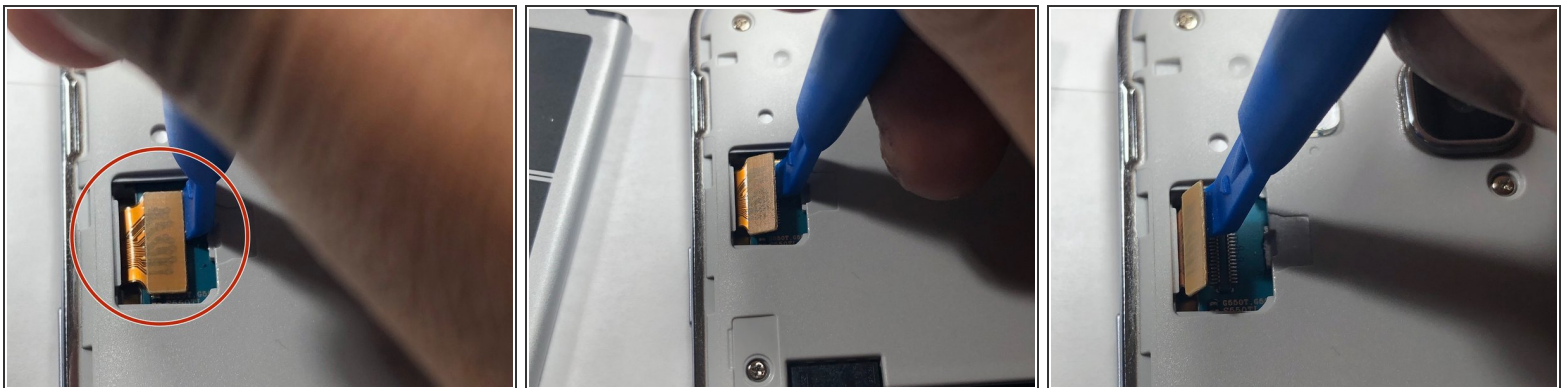


- Take the plastic Spudger tool to pry open the LCD ribbon cable cover.


 This part might be a little hard to open. Take your time and be careful not to push too hard, so there's no damage to the ribbon cable


 Once the cover is remove, place the cover aside so its not miss placed

Step 6



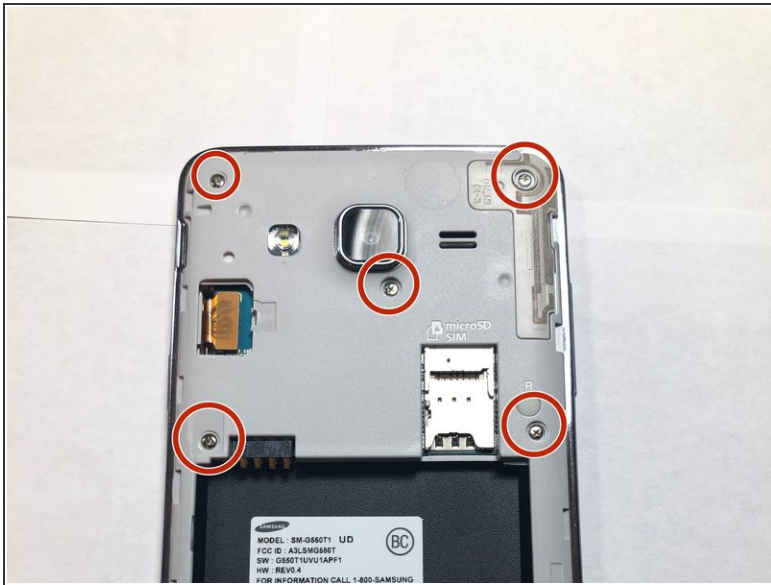
- Take a plastic pry tool and work towards the top right of the LCD ribbon cable to pry the cable from the logic board.

 Do not use a metal pry tool. Metal pry tools can cause damage to the logic board and to the ribbon cable.


 This cable send signal from the logic board to the LCD screen.

- Once unplugged move the cable aside.

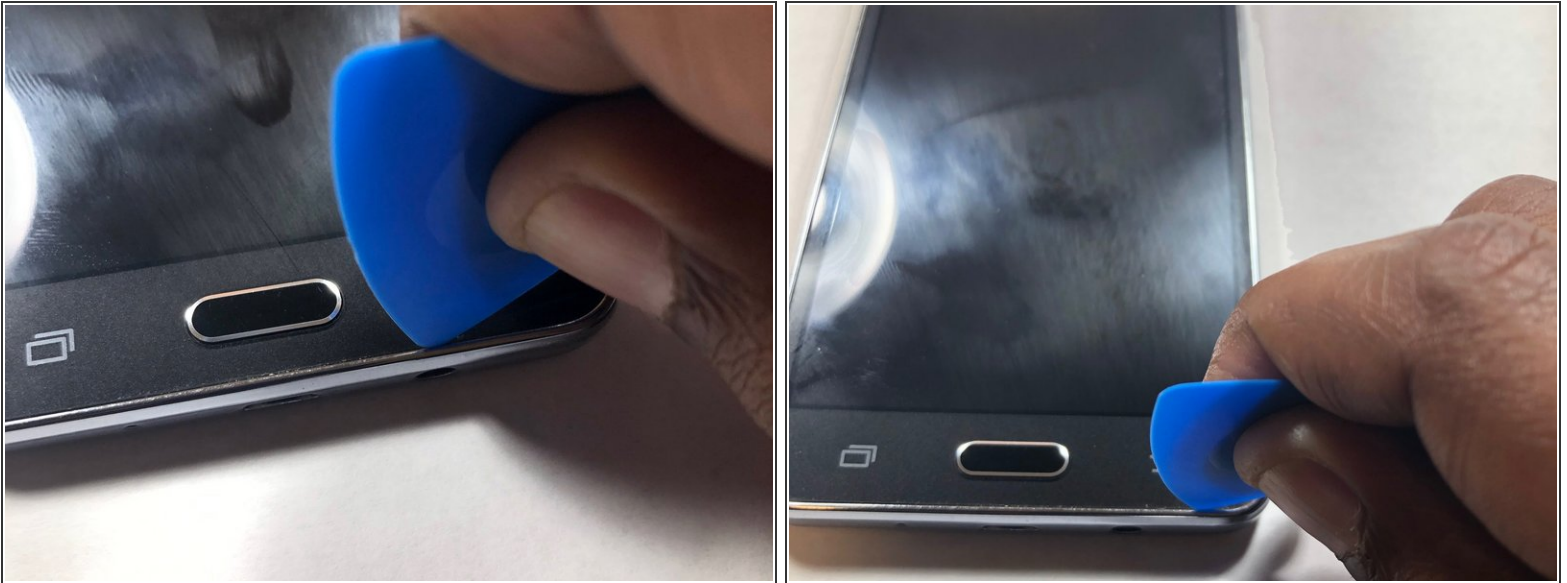
Step 7



- Take a PH00 Philip head and remove all 9 screws. Once done place them aside where you won't lose them.

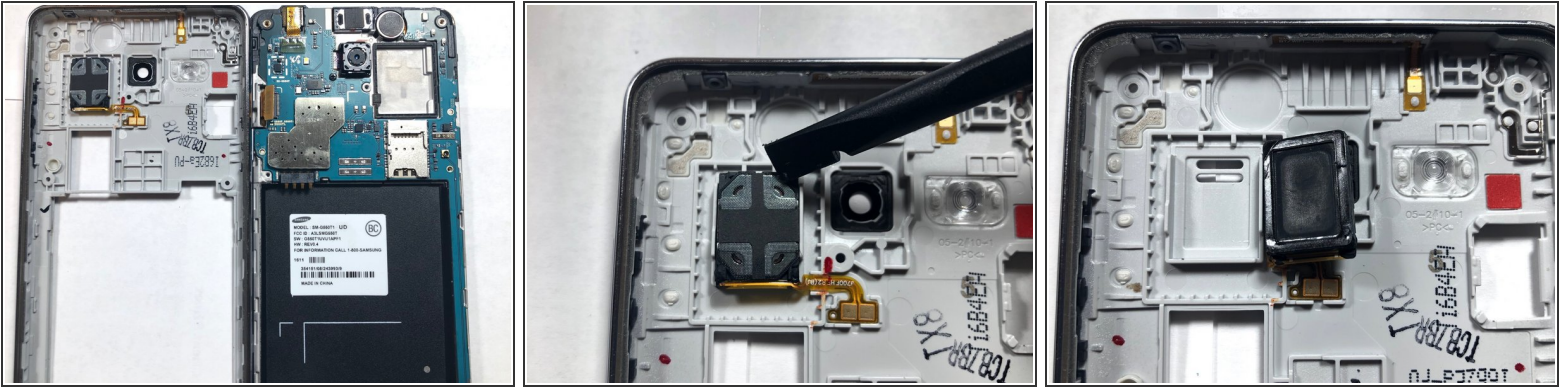
 All 9 screws are the same size.

Step 8



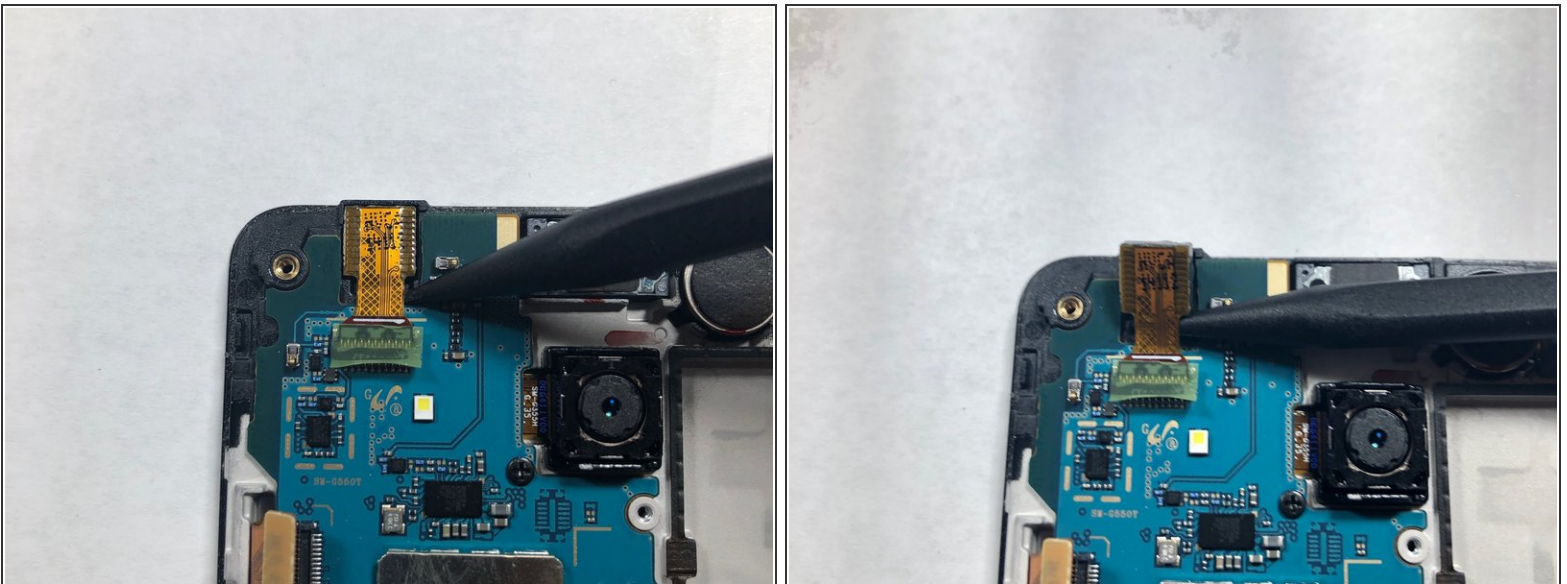
- Use iFixit plastic picks to pry away the LCD from the back assembly.
- ⓘ This process will take a bit due to the glue that's holding the LCD and back assembly together. Slowly move around the edge of the screen to loosen the glue up.
- ⓘ If you have a heat gun, you can use the heat gun to heat up the glue. That will make the use of the plastic picks easy to pry the pieces apart.

Step 9



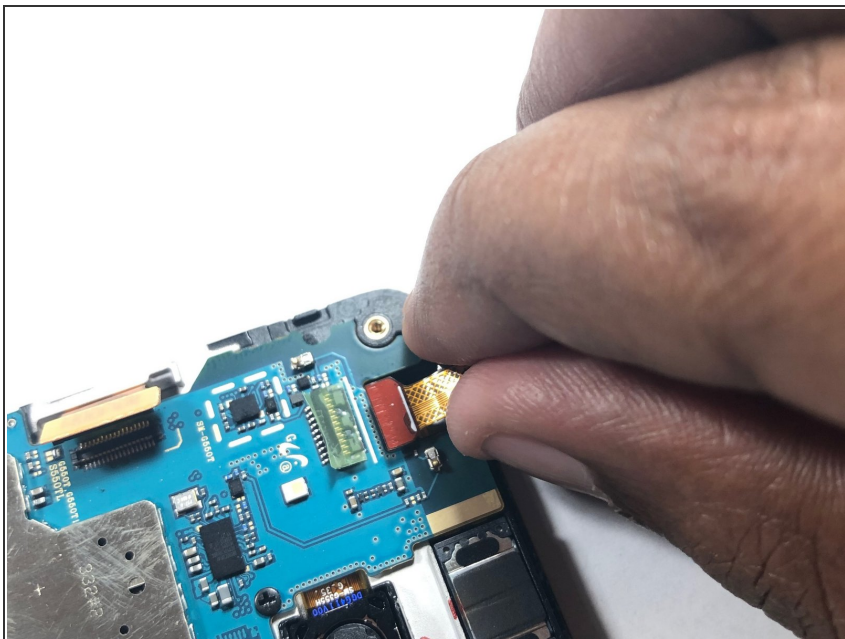
- Once both the LCD and back assemble come apart, look at the back assembly which the speaker is located.
- Once located take a the plastic pry tool to remove the speaker of its housing. And replace it with a new one.

Step 10 — Front-Facing Camera



- Use a plastic pry tool to lift the front-facing camera from its housing.
- ⚠ Using a metal pry tool can cause damage to the logic board or to the ribbon cable connection.
- ⓘ Always use plastic pry tool over metal tools when working on delicate electronic devices.

Step 11



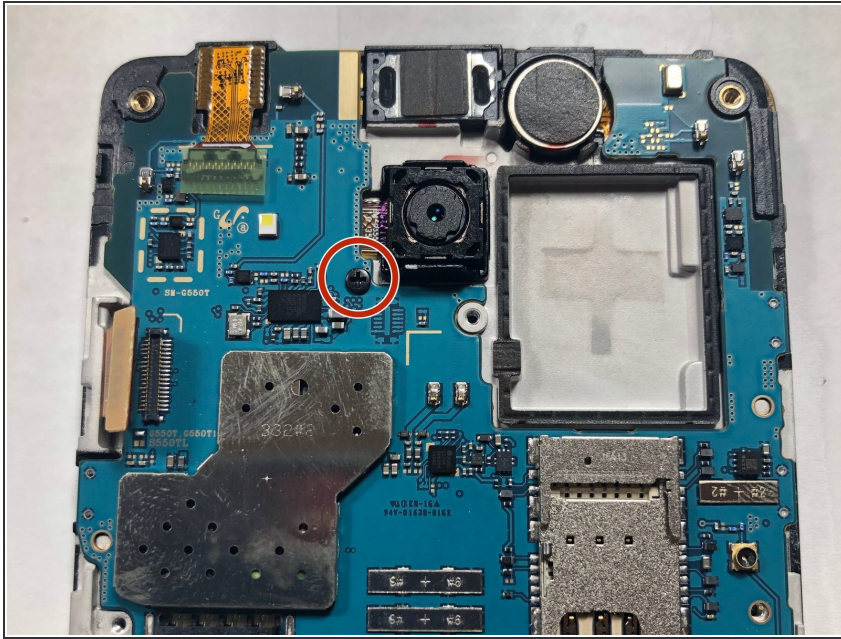
- Once the camera is out of the housing, pull the camera from its connection on the logic board.

Step 12



- You have now successfully removed the front-facing camera.

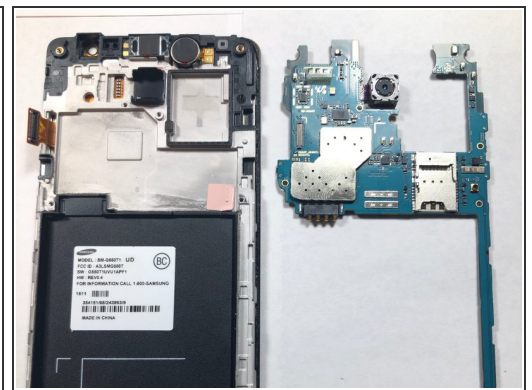
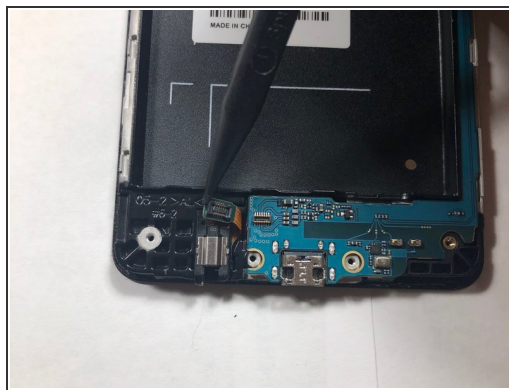
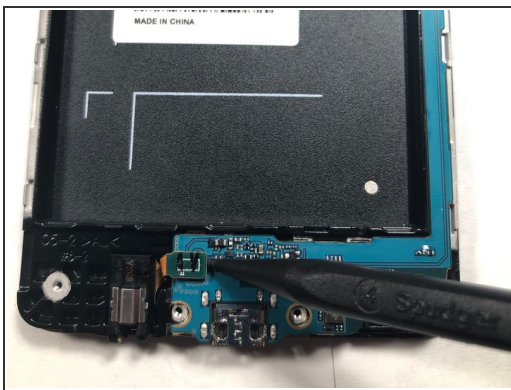
Step 13 — Rear-Facing Camera



- Using a Phillips #00 screwdriver, remove the screw securing the rear-facing camera.

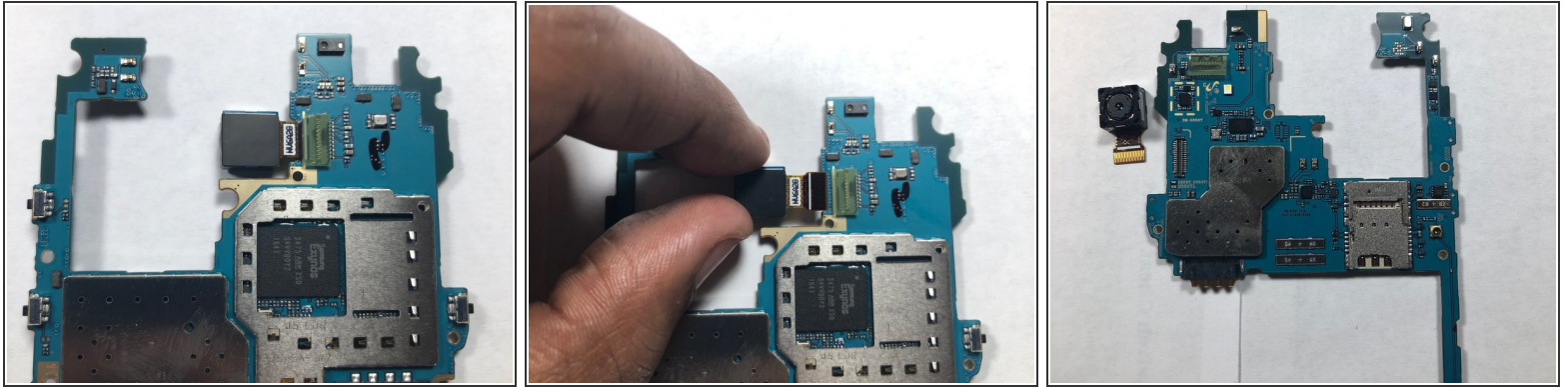
⚠ When using a metal tool always be aware of where you're placing the bit. Damage to the motherboard can be irreparable with normal tools.

Step 14



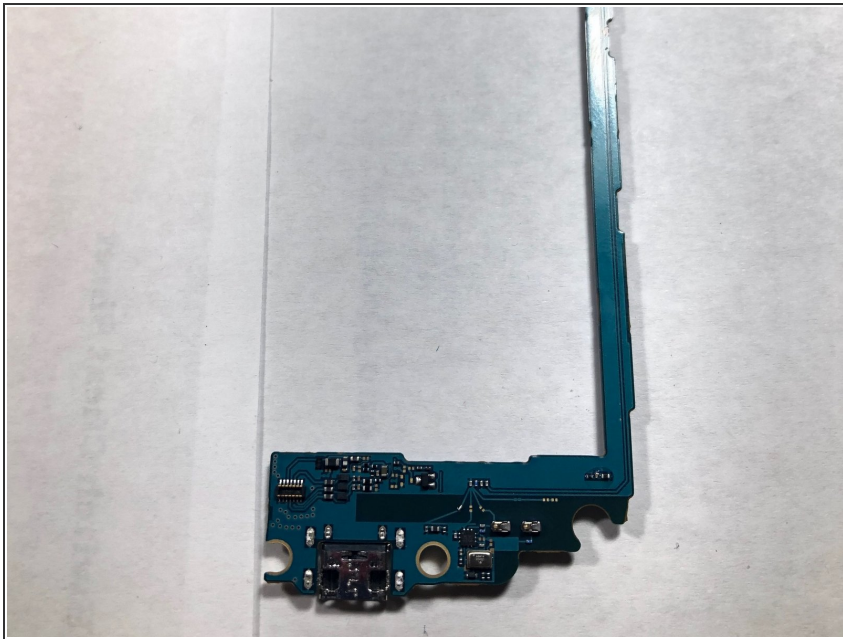
- Use a plastic pry tool to disconnect the headphone ribbon from the motherboard.
- Now you can remove the motherboard from the LCD housing by lifting up from the ends of the logic board.

Step 15



- Flip the logic board so the camera lens is facing down rather than at you.
- Now you can use your finger to remove the camera from its connection on the logic board.

Step 16 — Motherboard



- Once the logic board is strip of the cameras, go ahead and replace the logic board.

To reassemble your device, follow these instructions in reverse order.