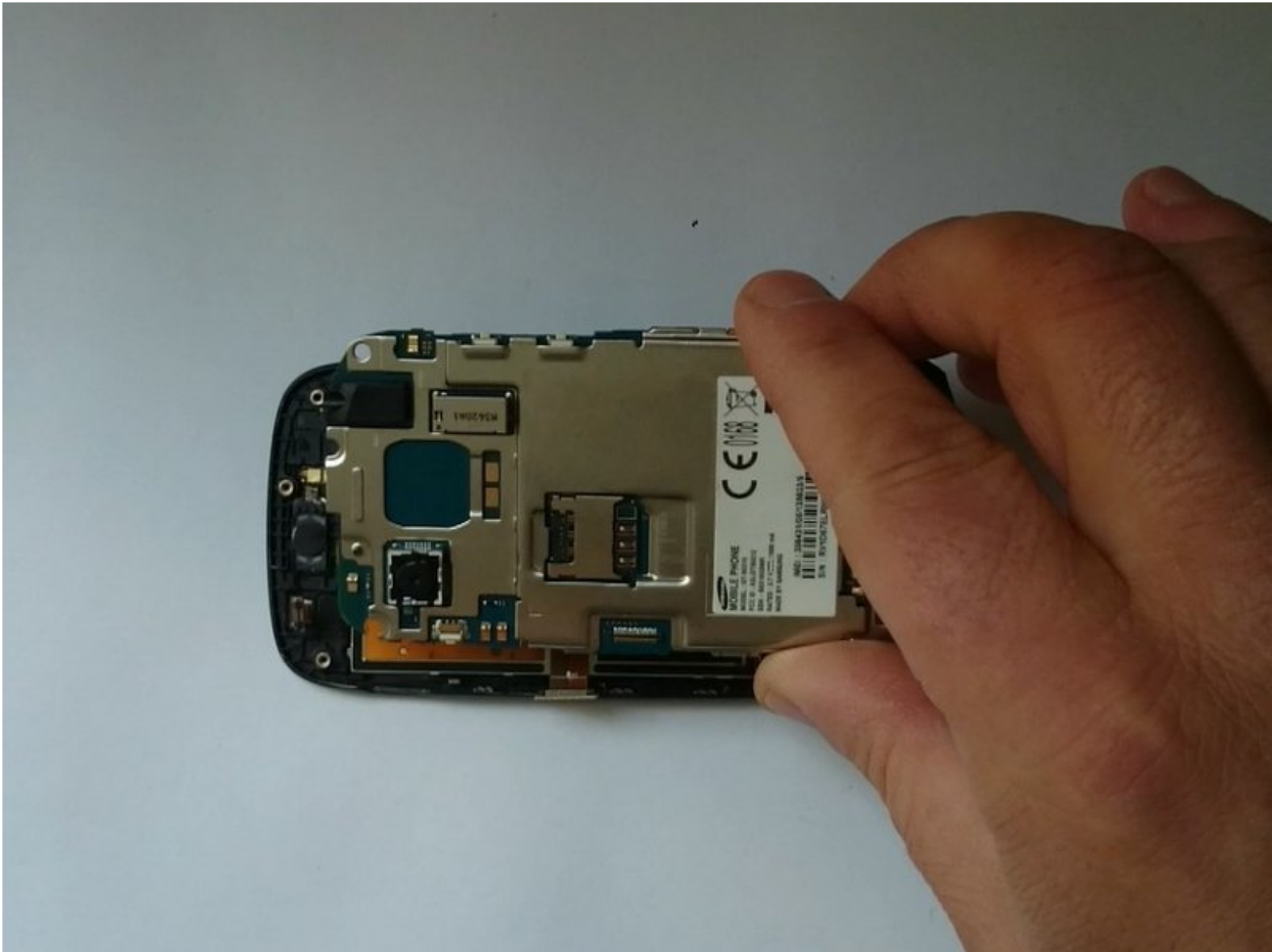




Samsung Galaxy Pocket Neo S5310 Logic Board Replacement

Samsung Galaxy Pocket Neo S5310 Logic Board Replacement

Written By: ZFix



INTRODUCTION

How to disassemble the phone and remove the Logic board.

Vedéo manual: _____

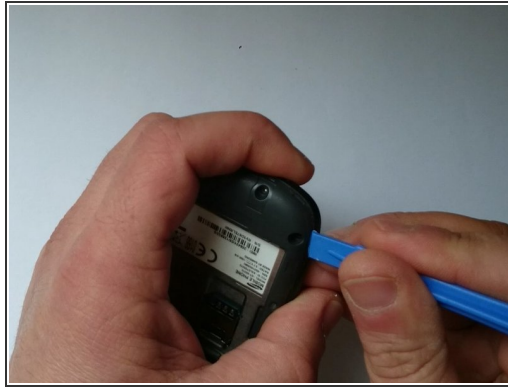
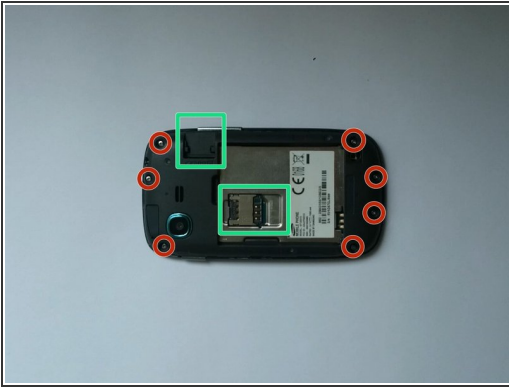
[video: <http://youtu.be/jiiAvS1RDQk>]



TOOLS:

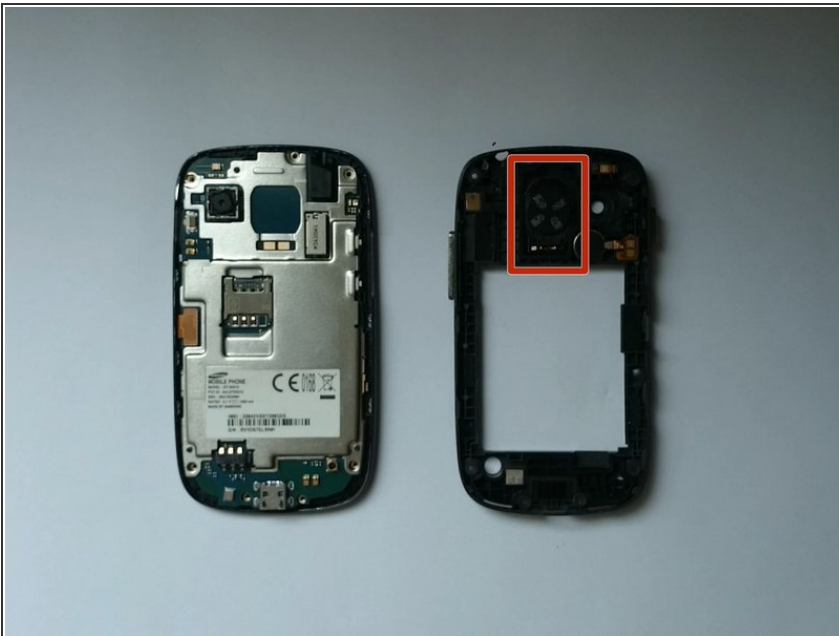
- [Phillips #0 Screwdriver](#) (1)
 - [iFixit Opening Tools](#) (1)
 - [Spudger](#) (1)
 - [Tweezers](#) (1)
-

Step 1 — Loudspeaker



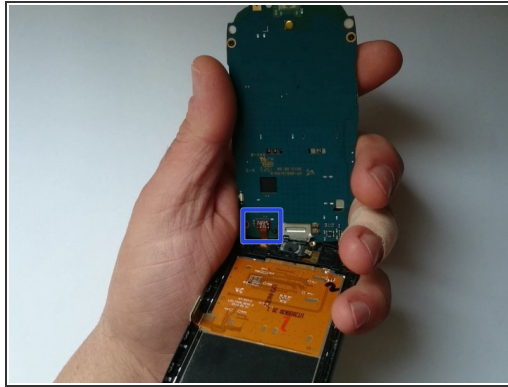
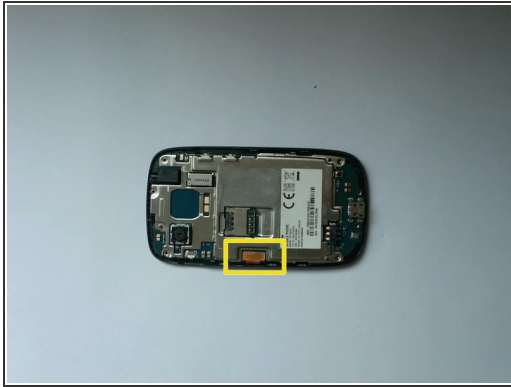
- Remove any SIM and SD card.
- Remove 7x Phillips screws.
- Use a plastic tool to disassemble the rear housing.

Step 2



- The Loudspeaker is located on the rear housing..

Step 3 — Logic Board



- Disconnect the LCD Display flex cable.
- Lift up the board and disconnect the Touchscreen flex cable.
- Now you can remove the Motherboard.

To reassemble your device, follow these instructions in reverse order.