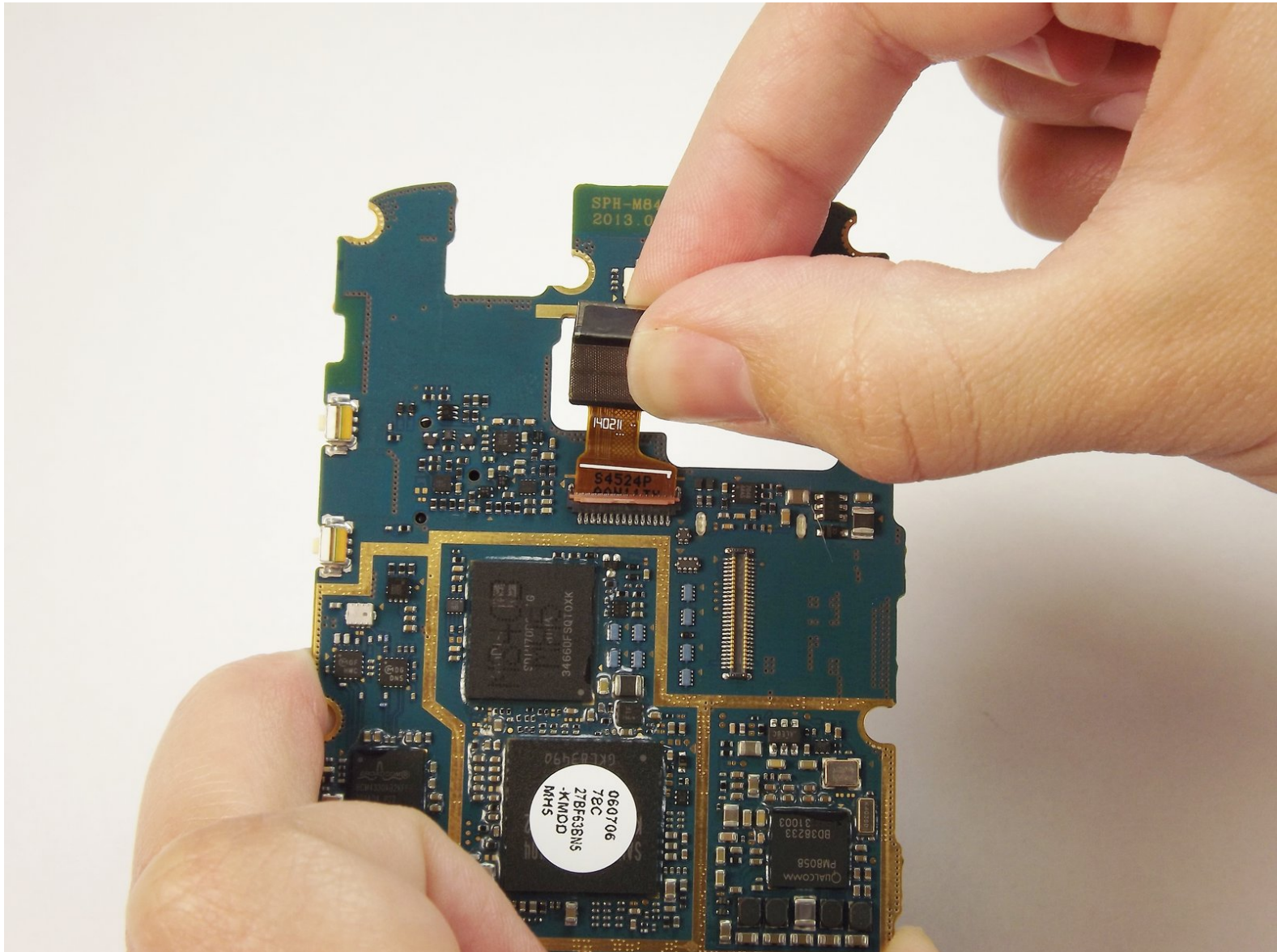




Samsung Galaxy Prevail 2 Rear Facing Camera Replacement

If your current camera does not work and is damaged, this will show you how to replace it.

Written By: Alexandra Hernandez



INTRODUCTION

This guide will show you how to locate and replace the camera for the Samsung Galaxy Prevail 2. No background information is required.



TOOLS:

- [iFixit Opening Tools](#) (1)
 - [Phillips #000 Screwdriver](#) (1)
 - [Phillips #00 Screwdriver](#) (1)
-

Step 1 — Removing Back Casing



- Using your finger nails or the spudger; pry the plastic casing open, and pull away from the body of the phone.

Step 2 — Remove Battery



- Gently pull the battery out of the phone.

Step 3 — Remove Screws



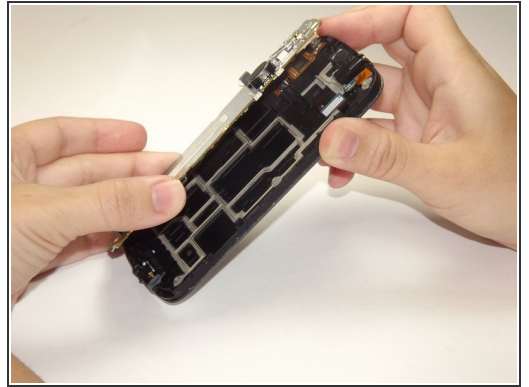
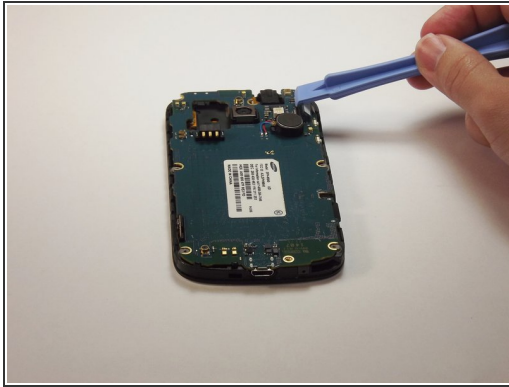
- Unscrew all of the screws.
- ⓘ Be sure to set the screws aside in a safe place.

Step 4 — Pry Off Back Of Phone



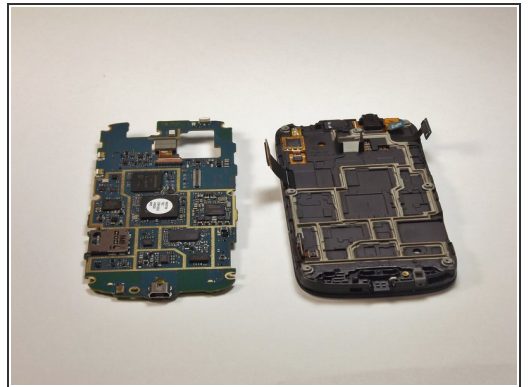
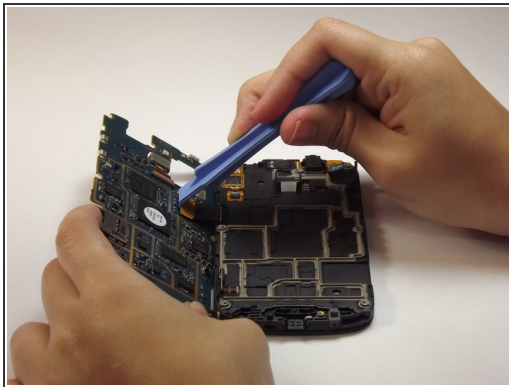
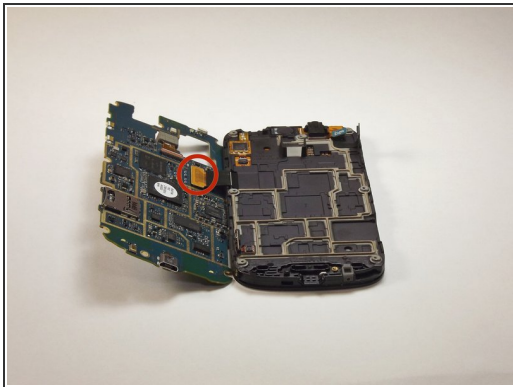
- Insert the plastic prying tool between the silver frame and the white face of the phone to pry off the front frame.
- ⓘ Make sure to pry around the entire frame before attempting to loosen it.
- Push the motherboard out using your thumbs as shown

Step 5 — Open Up The Motherboard



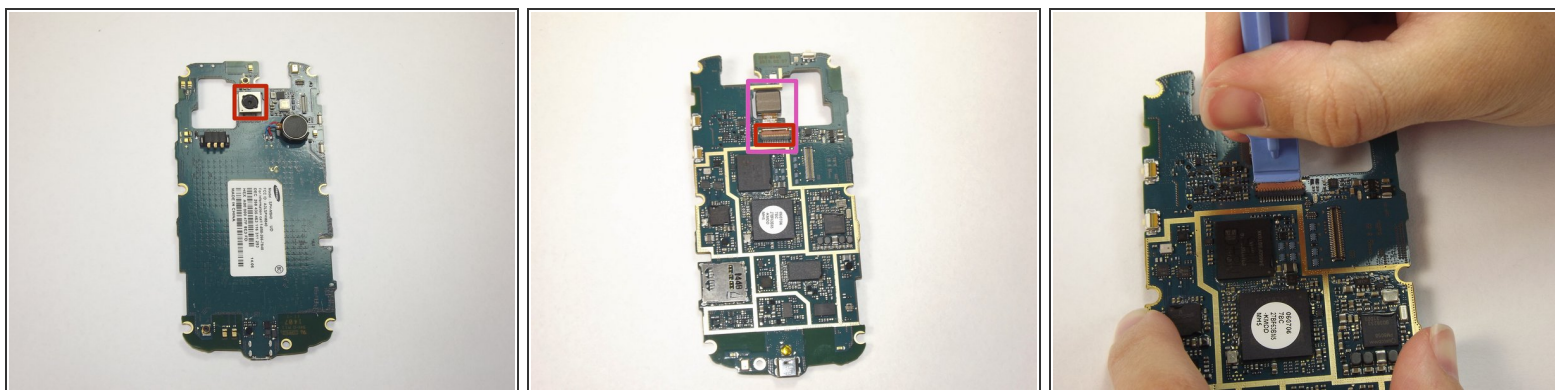
- Lift the flap up using the plastic prying tool.

Step 6 — Detach Motherboard




- Lift the second flap to detach the motherboard completely.

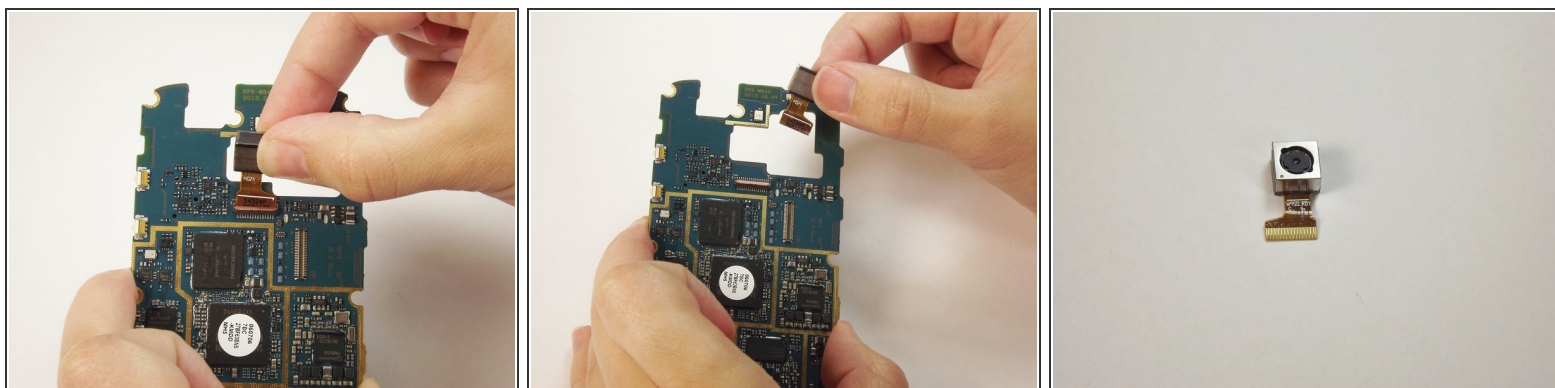
Step 7 — Locate Camera



- With plastic prying tool, lift the flap connected to the camera (indicated in red) to remove it.

 Be sure that you are looking at the back face of the motherboard.

Step 8 — Detach Camera



- Carefully lift and remove the camera from its position.

To reassemble your device, follow these instructions in reverse order.