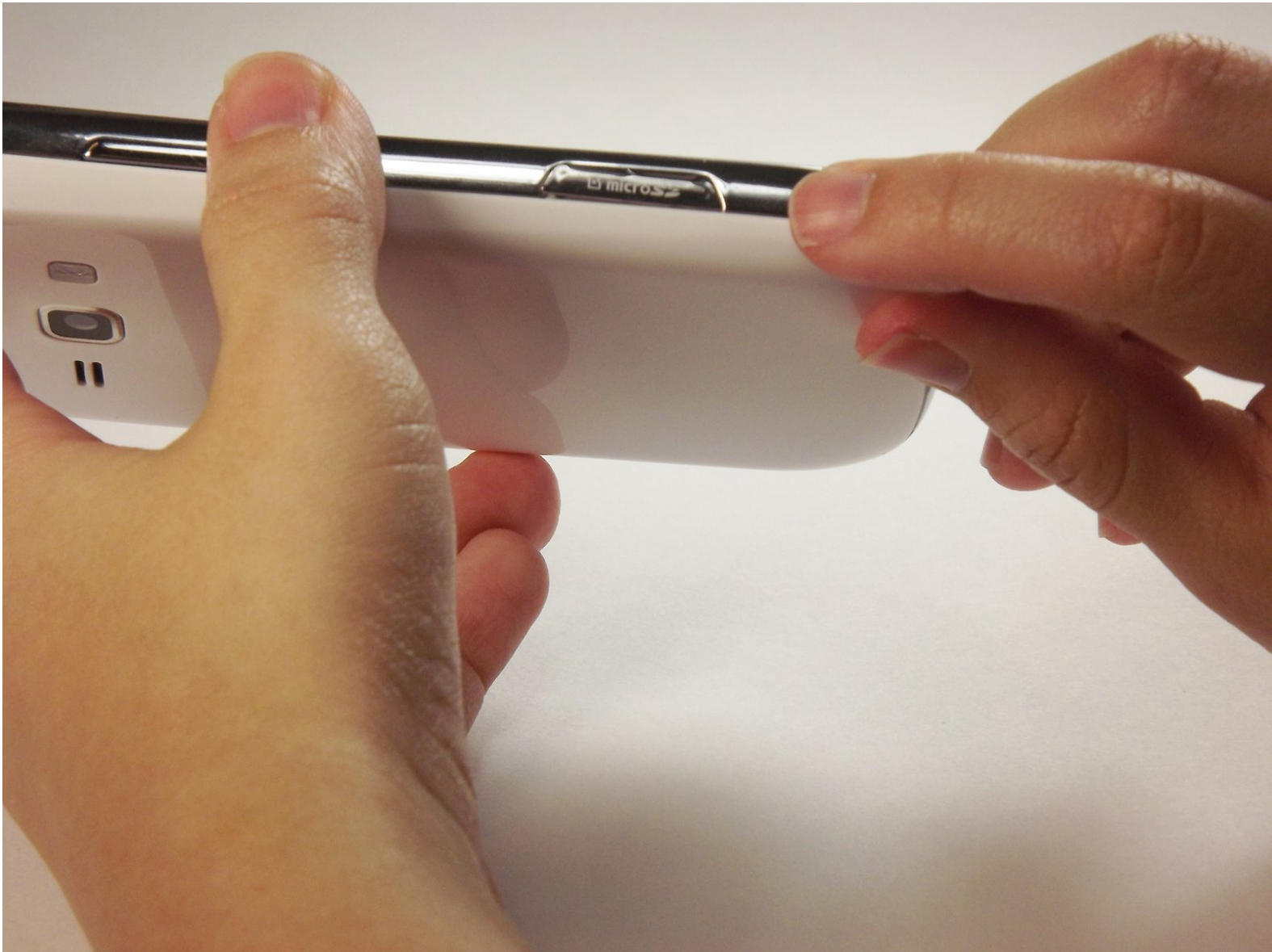




Samsung Galaxy Prevail 2 microSD Card Replacement

If you are running low on memory on your device, this will show you how to insert a memory card.

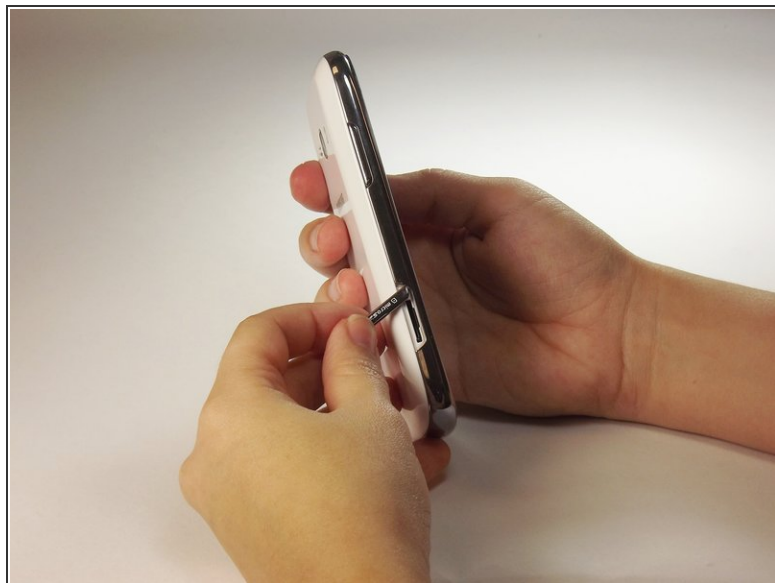
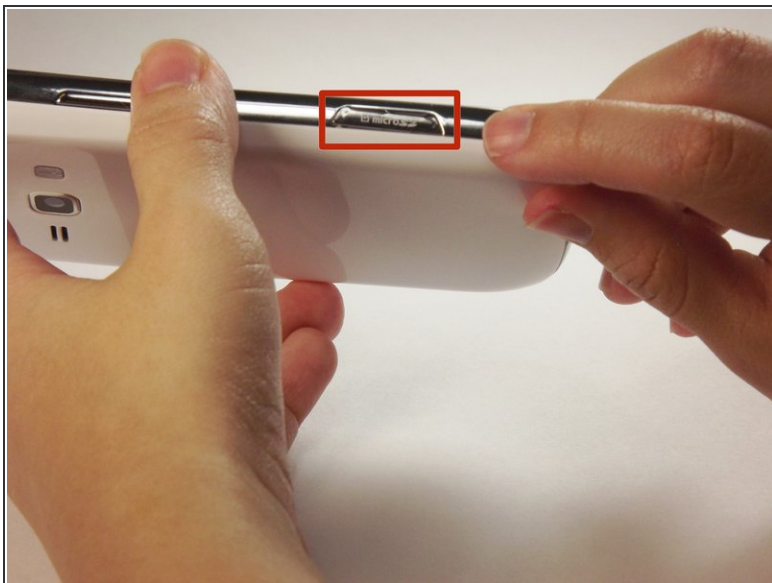
Written By: Alexandra Hernandez



INTRODUCTION

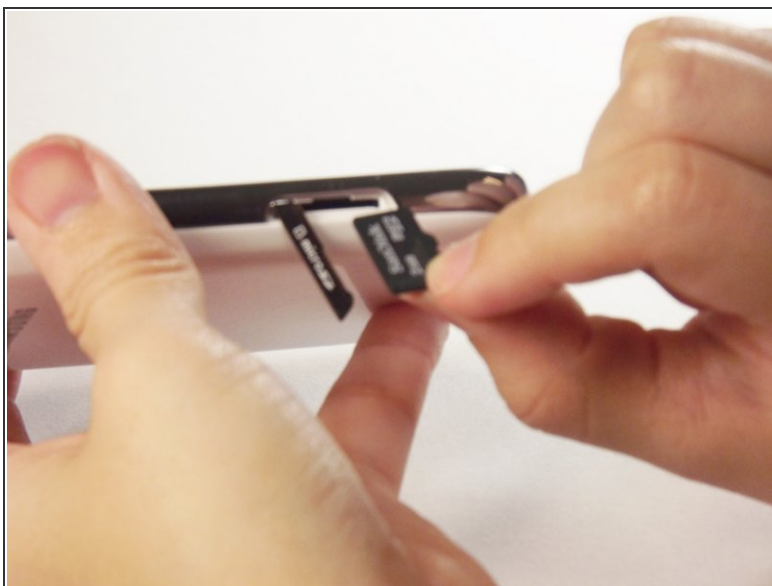
Replacing your memory card can allow for larger quantities of data to be stored on your phone. No background information is required to complete this guide.

Step 1 — Locate & Open Memory Card Slot



- Open memory card slot.

Step 2 — Insert Memory Card



- Insert card with the brand name logo of facing up.
- Close the slot to how it was before you opened it.

To reassemble your device, follow these instructions in reverse order.