



Samsung Galaxy Prevail Rear Camera Lens Replacement

This guide show how to replace the rear camera lens if it has been scratched or damaged.

Written By: Ricardo Zuloaga



INTRODUCTION

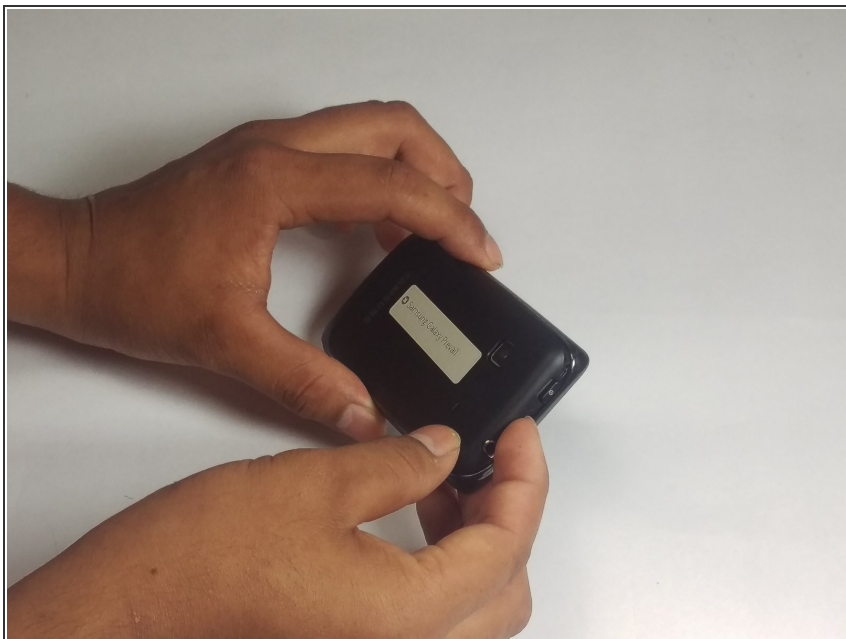
Using this guide you will replace the camera lens fixing hardware related camera issues such as scratches or cracks.



TOOLS:

- [Phillips #00 Screwdriver](#) (1)
 - [Spudger](#) (1)
-

Step 1 — Rear Camera Lens



- Using your hands, carefully remove the back panel by popping the open slit, near the headphone jack, outwards.

Step 2



- Using your fingernail or nylon spudger, remove the battery by lifting upward in the recess of the bottom right corner.

Step 3



- Remove the (6) 4mm screws using a Phillips #00 screwdriver.

Step 4



- Using the black spudger, carefully unhinge and pry the secondary rear panel using the recessed tabs on the left and right sides.
- ⓘ The secondary rear panel houses the camera lens and speaker assembly,
- ⚠ The metal trim of the headphone jack may come loose during this process.

Step 5



- Replace the secondary rear panel which has the camera lens attached.

To reassemble your device, follow these instructions in reverse order.