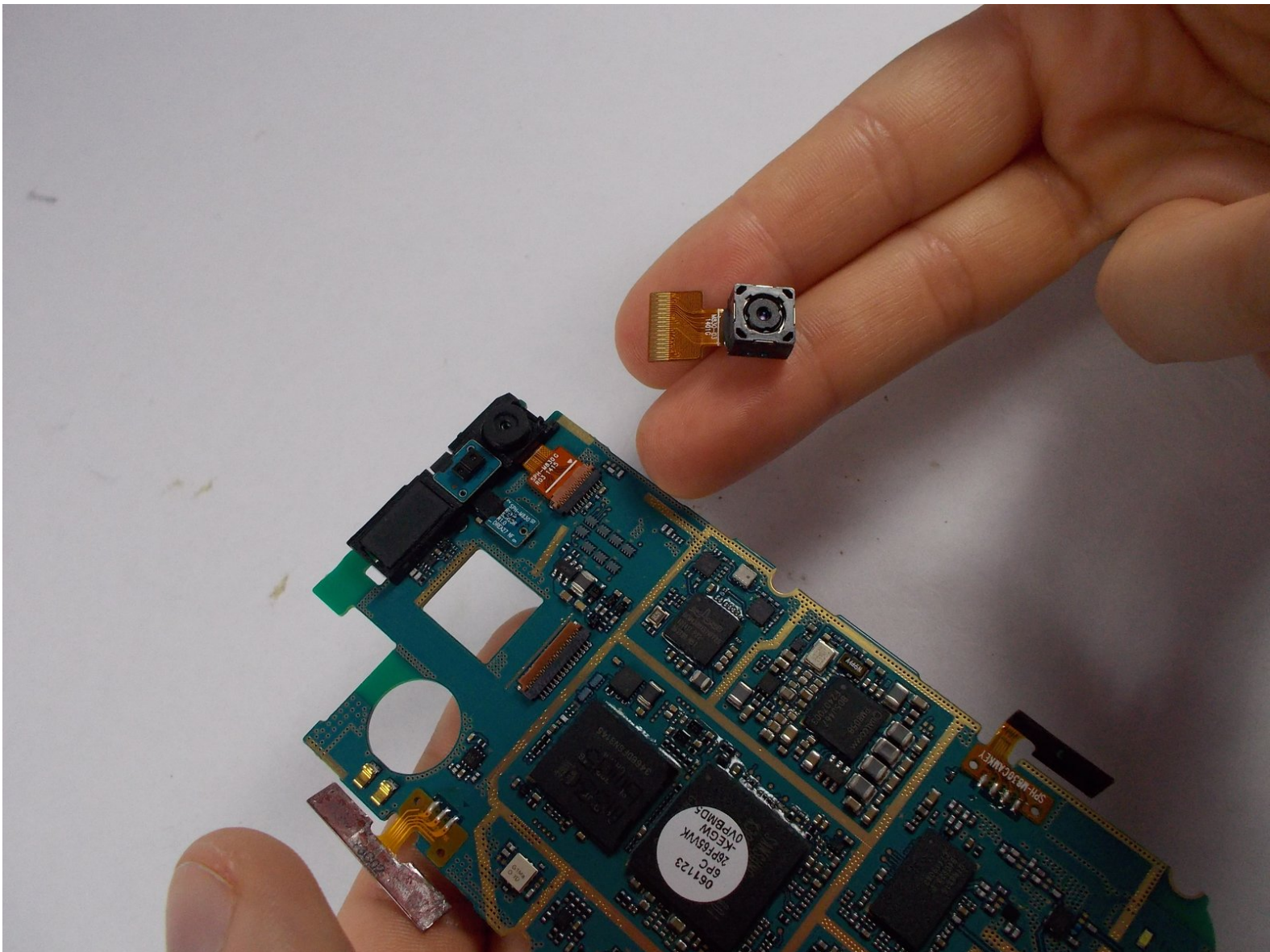




Samsung Galaxy Rush Rear Facing Camera Replacement

Written By: Matthew





TOOLS:

- [Phillips #0 Screwdriver](#) (1)
-

Step 1 — Rear Facing Camera



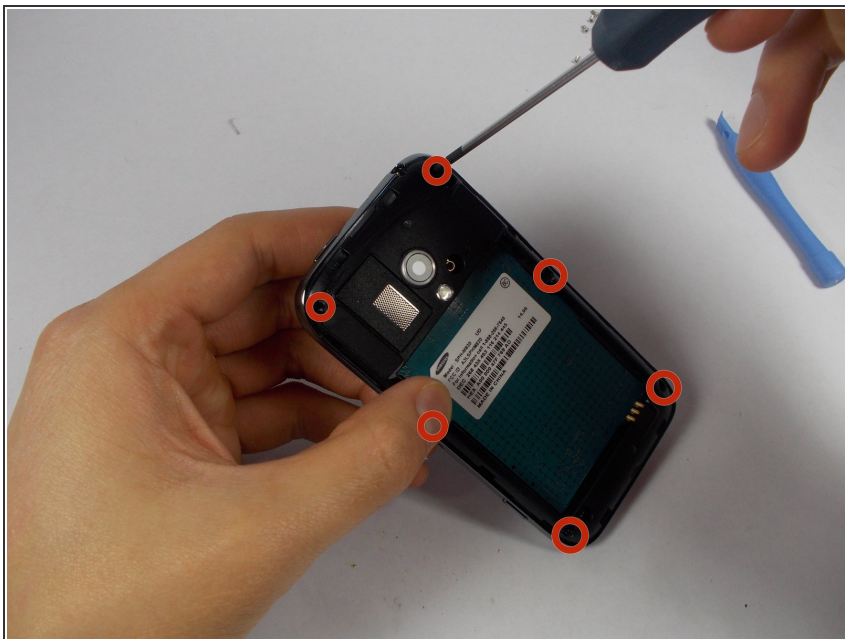
- Looking at the back of your phone, use your finger to remove the back cover

Step 2



- Remove the battery.

Step 3



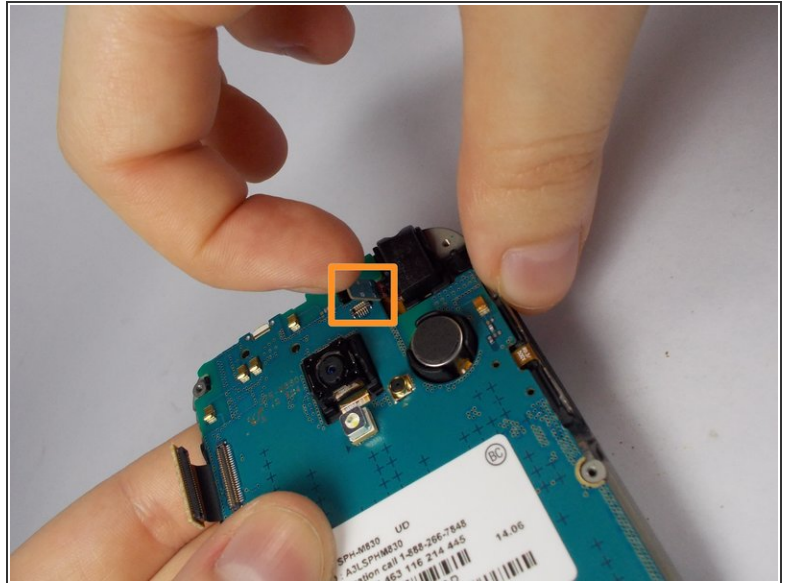
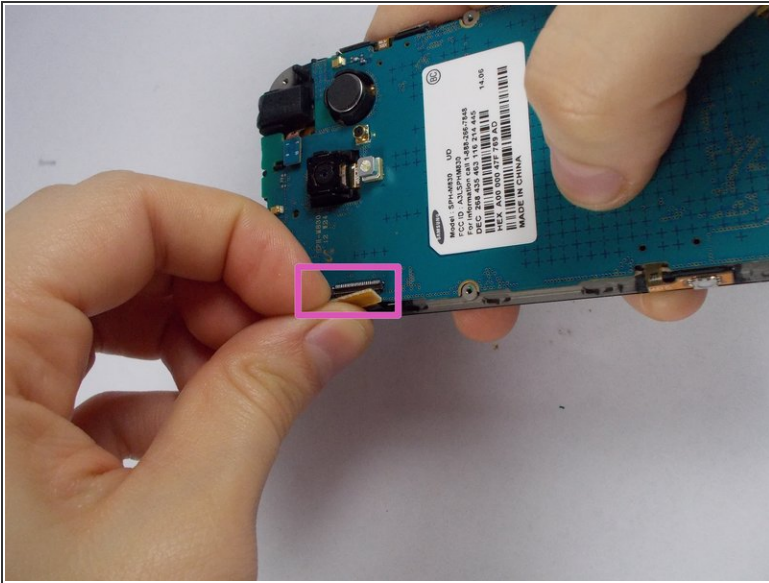
- With a small phillips-head screw driver, remove the six screws holding the back panel in place.

Step 4



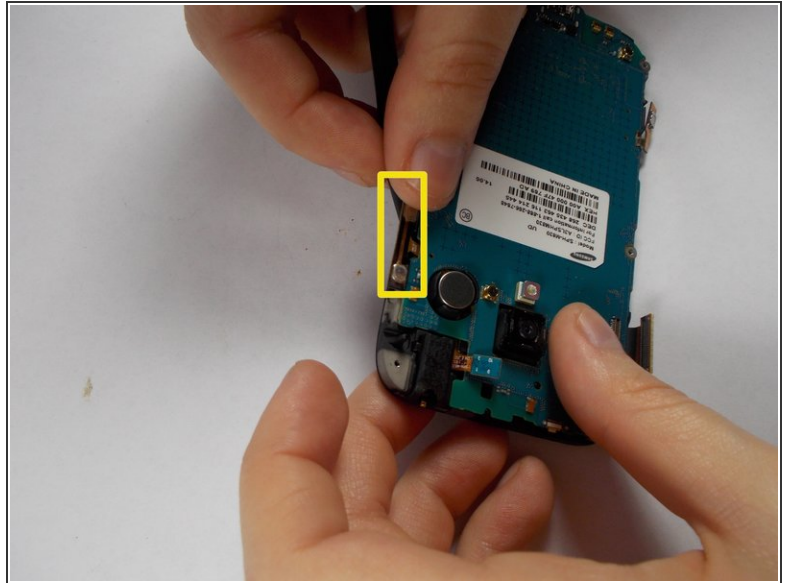
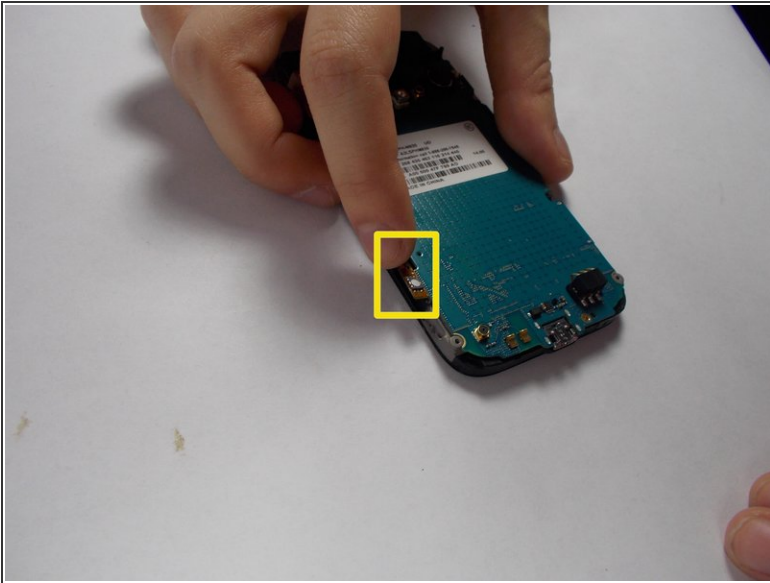
- Use the pry tool to pry the back panel from the rest of the phone. Pry from the edge closest to the screen for simplicity.

Step 5



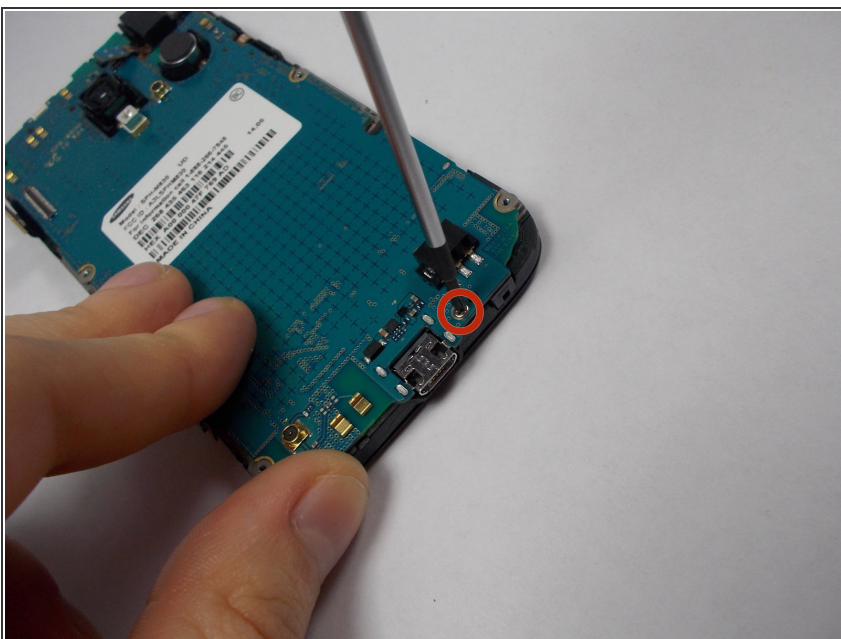
- Using tweezers, gently lift connectors from motherboard.
- A connector will be on the upper left
- The second connector is located towards the top of the phone. Above the camera. It comes off with ease.

Step 6



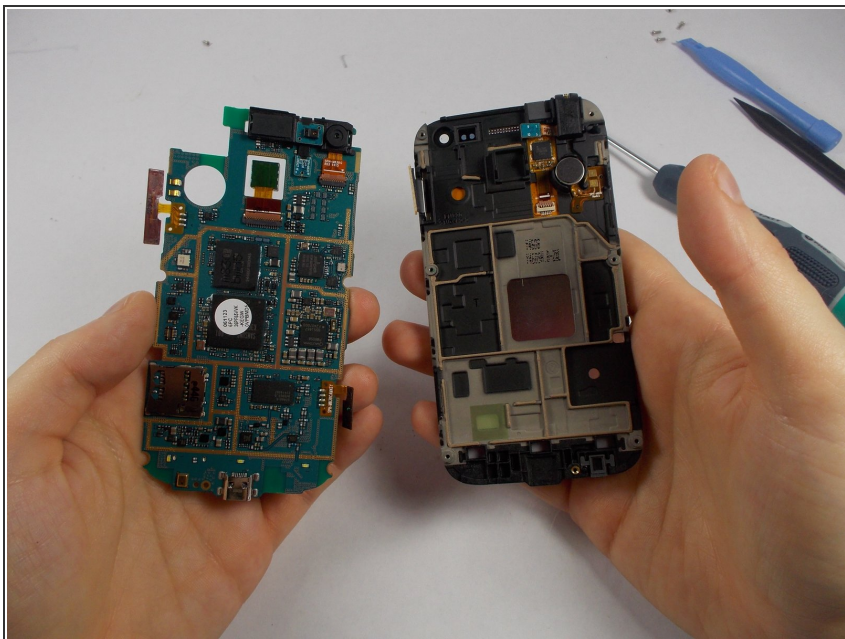
- Use the tweezers to carefully remove the 2 adhesive orange ribbons.
- These stay attached to the motherboard so be careful not to break them.
- They are on the side of the phone.

Step 7



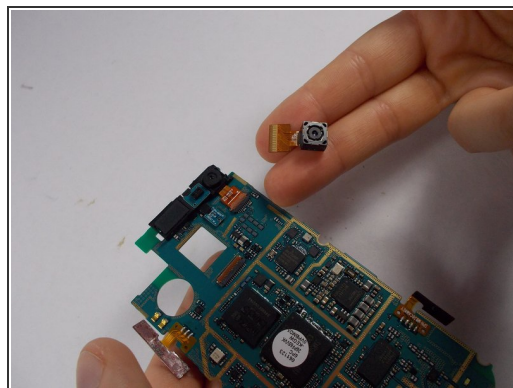
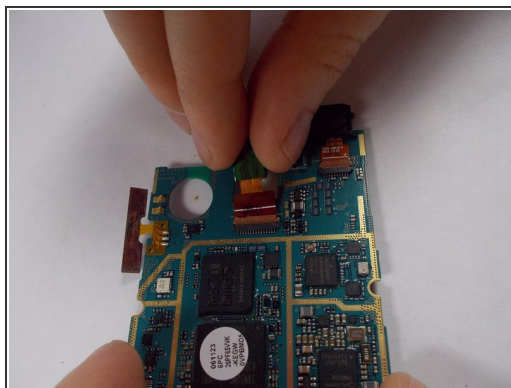
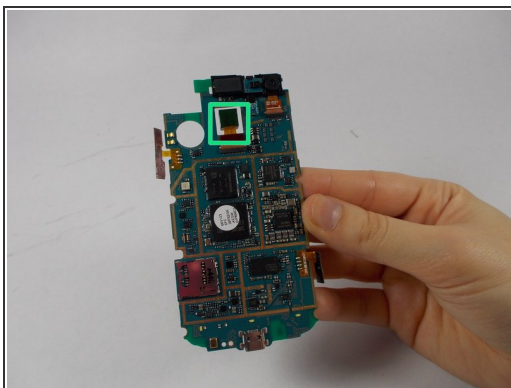
- Use a philips-head screwdriver to remove the single screw on the bottom of the phone. Located to the right of the charging port.

Step 8



- Lift the motherboard upwards separating it from your screen.

Step 9



- Hold the motherboard with the circuits facing towards you
- Gently take the back camera with two fingers and pull up-wards. A wiggle may help.

To reassemble your device, follow these instructions in reverse order.